

U. S. PUBLIC LAND SURVEY MONUMENT RECORD

NOTE: This form is intended and designed to fulfill all requirements of Wisconsin Administrative Code, Chapter A-E 7.08 U.S. Public Land Survey Monument Record (3) (a-i)

A-E 7.08(3)(a) Identity of corner:
East 1/4 Corner Section 13,
Township 39 North, Range 14 East
of the Fourth Principal Meridian,
Town of Popple River, Forest County,
Wisconsin

WISCORS - FOREST COUNTY
N: 676,311.790 USft (XXX,XXX.XXX)
E: 894,131.833 USft (XXX,XXX.XXX)
Datum: NAD83 (2011)
GNSS Method RTK
GNSS Control WISCORS VRS



The coordinate value shown has been verified by the average of two or more GPS observations at a markedly different time. Coordinates shown in parenthesis are previously published values.

A-E 7.08(3)(b)

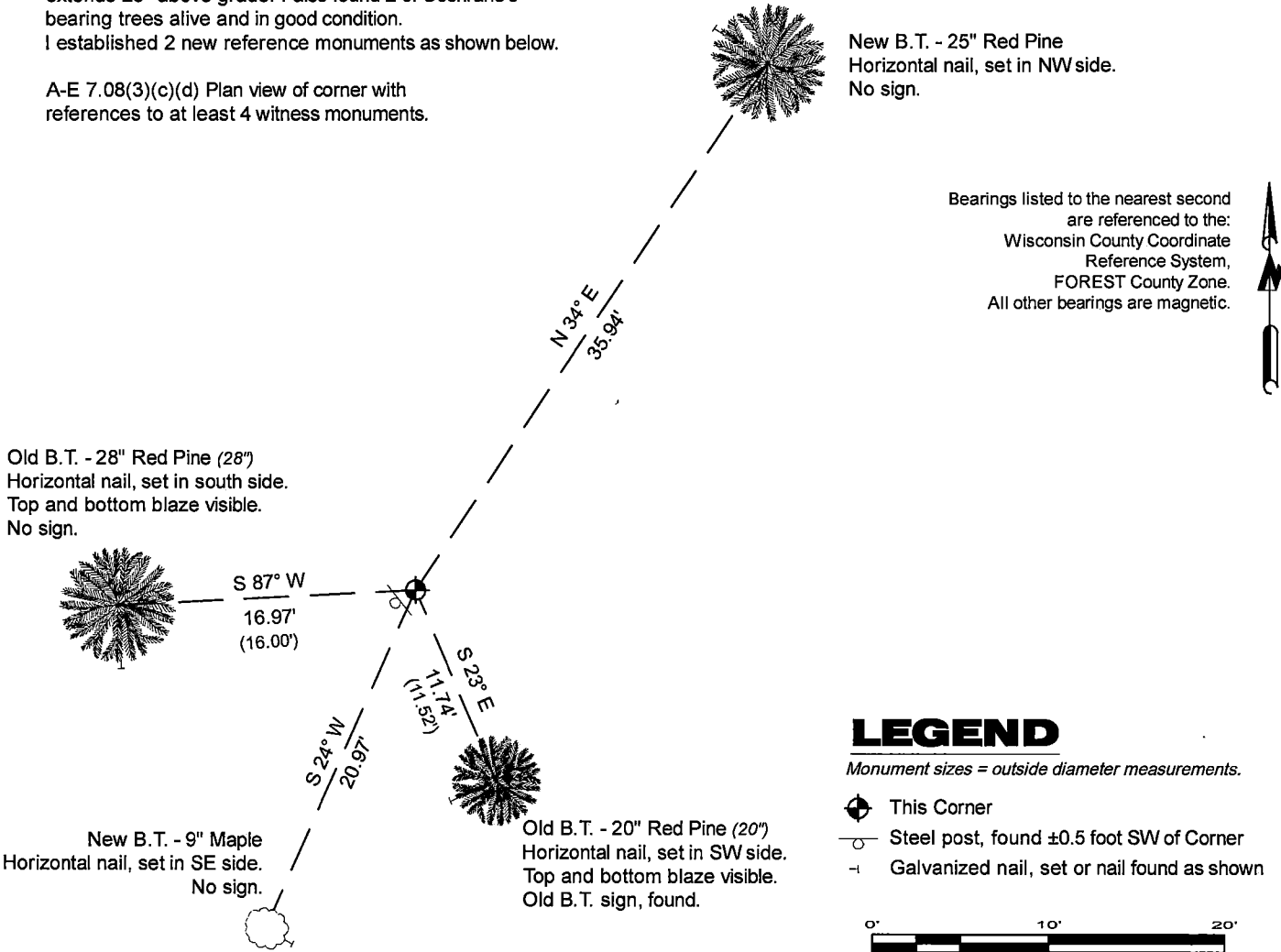
Original Surveyor: Artemas Curtis - May 1858
White Pine 22 - S 54° W, 18 Links, Yellow Pine - N 74° E, 15 Links,

See previous U.S. Public Land Survey Monument Record - L-1 (Florence Co.) - February 10, 1987 - Surveyor 1107 - William B. Cochrane
THENCE:

- 1988 - Surveyor 1107 - William B. Cochrane - indicates this position as "2 1/2" galvanized iron pipe monument 36 inches long with a brass cap" on Forest Co. record Map #391413-19890504.
- November 26, 2008 - Surveyor 2197 - Michael A Trembl - indicates this position as "existing 2" iron pipe w/brass cap" on Florence Co. record Map #M0298.

November 20, 2024 - In performing the 2024 - Forest County - "PLSS Corner Remonumentation and GPS Services" project, I found a 2.25" diameter galvanized iron pipe monument with a 3" diameter brass cap stamped to identify the corner. The monument is on highland and extends ±6" above grade. I also found 2 of Cochrane's bearing trees alive and in good condition. I established 2 new reference monuments as shown below.

A-E 7.08(3)(c)(d) Plan view of corner with references to at least 4 witness monuments.



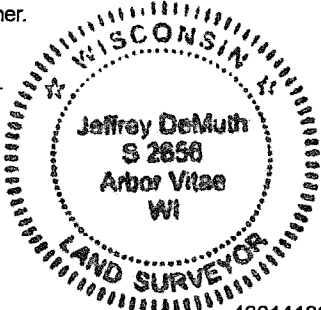
A-E 7.08(3)(e) 1858 Surveyor set a post, 1987 Surveyor found a 2" inside diameter galvanized iron pipe with a brass cap stamped to identify corner, 1989 Surveyor found a 2 1/2" galvanized iron pipe monument with a brass cap, 2008 Surveyor found a 2" iron pipe w/brass cap. In 2024, I found a 2.25" diameter galvanized iron pipe monument with a 3" diameter brass cap stamped to identify the corner.
A-E 7.08(3)(f) I accept this monument in good faith as a FOUND PERPETUATED LOCATION of the corner.
A-E 7.08(3)(g)(h) This corner was not determined through lost-corner-proportionate methods.

A-E 7.08(3)(i) I, Jeffrey L. DeMuth, Professional Land Surveyor No. S-2656, hereby certify that the corner location on this record was determined by me or under my direction and control, and that this U.S. Public Land Survey Monument Record is correct and complete to the best of my knowledge, and belief.

SIGNATURE

November 26 2024

DATE



43914132000

43914132000

L25

CERTIFIED LAND CORNER RESTORATION

State of Wisconsin

County of Forest

} ss.

I, William B. Cochrane, do hereby certify that on the 4th day of June, 1974, I found evidence of the East Quarter corner of Section 13 Township 39 North, Range 14 East, Fourth Principal Meridian, as described hereon; and that from this evidence I established a new monument and accessories as described hereon to perpetuate the original location of this corner:

Description of original monument and accessories and subsequent restorations:

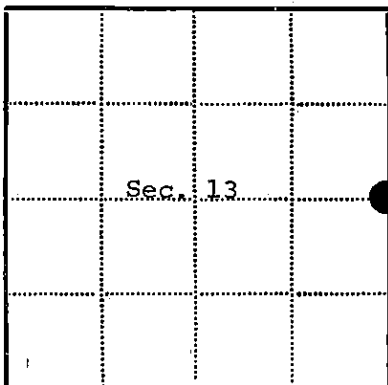
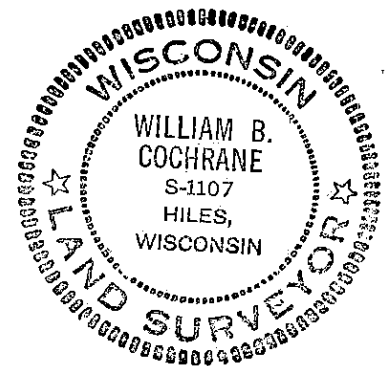
Surveyed in May 1858 by Artemas Curtiss.
 North between Sections 13 and 18. 40.0 chains set quarter section post.
 W. Pine, 22", S54°W, 18 lks.
 Y. Pine, , N74°E, 15 lks.

Description of corner evidence found:

No post was found.
 From a point, a white pine snag, 20", bears S54°W, 18 lks.
 The snag is fire scared and old axe marks (notch) are visible.
 From same point red pine stump bears N74°E, 15 lks.
 Since June 1974, logging has destroyed the white pine snag.

Description of monument and accessories I established to perpetuate the location of this corner:

At the corner position as determined from original evidence, I set a 2 inch inside diameter, galvanized pipe, 3 feet long, filled with concrete, with a brass cap stamped: T39N, R14E, R15E, 1/4, S13, S18, 1975, S-1107.
 From which the following bear:
 Red Pine, 17", S23°E, 11.52 feet
 Red Pine, 23", S87°W, 16.00 feet
 Set a steel sign post, SW of the monument, 0.50 feet.



● = Corner monument restored

□ =

Resident witnesses.....

Dated at Three Lakes Wisconsin, this 12th day of June 1975.

Signature William B. Cochrane Title Survey Technician

(County Surveyor, Registered Land Surveyor, or other duly authorized official)

Surveyors Registration No. S-1107

DOCUMENT NUMBER 107235

Office of Register of Deeds County of Forest

I hereby certify that the within instrument was filed in this office for record on the 16th day of June 1975, and was filed in Book No. _____ Page No. _____ of County Records.

Signature Eugene Stutz Title Register of Deeds

Township 39 North, Range 14 East, Section 13, Index No. L-25, Page No. _____

43914132000

25