

U. S. PUBLIC LAND SURVEY MONUMENT RECORD

NOTE: This form is intended and designed to fulfill all requirements of Wisconsin Administrative Code, Chapter A-E 7.08 U.S. Public Land Survey Monument Record (3) (a-i)

A-E 7.08(3)(a) Identity of corner:
Meander Corner, East line Section 24,
NORTH SIDE of peninsula - Lake Long Lake,
Township 39 North, Range 14 East
of the Fourth Principal Meridian,
Town of Popple River, Forest County, Wisconsin

WISCRS - FOREST COUNTY
N: 670,649.032 USft (XXX,XXX.XXX)
E: 894,204.498 USft (XXX,XXX.XXX)
Datum: NAD83 (2011)
GNSS Method RTK
GNSS Control WISCORS VRS



The coordinate value shown has been verified by the average of two or more GPS observations at a markedly different time. Coordinates shown in parenthesis are previously published values.

A-E 7.08(3)(b)

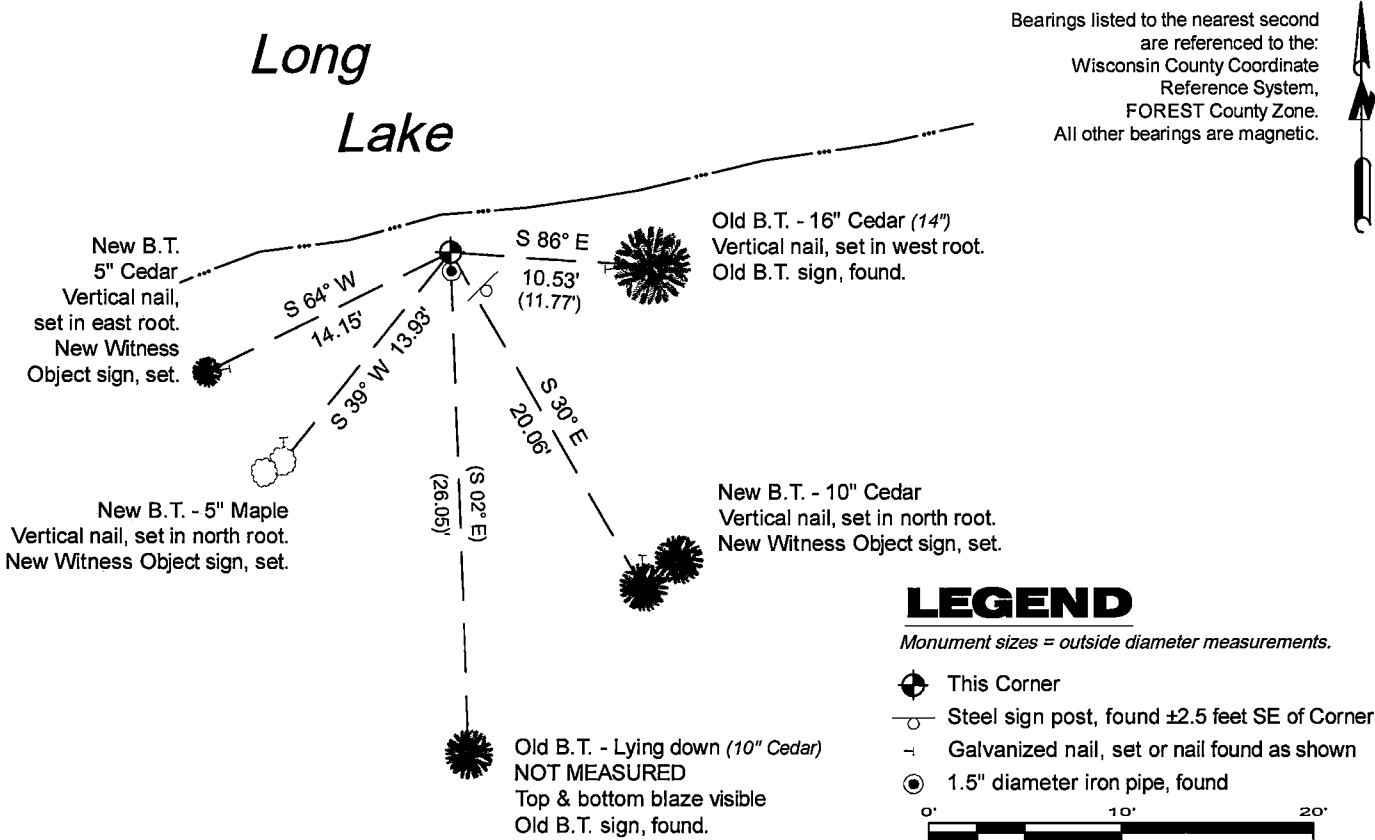
Original Surveyor: Artemas Curtis - May 1858
Cedar 10 - S 44° W, 77 Links, Cedar 7 - S 48° E, 17 Links

See previous U.S. Public Land Survey Monument Record - P,Q-1 (Florence Co.) - February 11, 1987 - Surveyor 1107 - William B. Cochrane - THENCE:

- 1988 - Surveyor 1107 - William B. Cochrane - indicates this position as "2 1/2" diameter galvanized iron pipe monument 36 inches long with brass cap" on Forest Co. record Map #391424-19890412.
- April 24, 2008 - Surveyor 2197 - Michael A. Trembl - indicates this position as "existing 2 1/2" U.S.F.S. galvanized iron pipe monument w/brass cap" on Florence Co. U.S. Public Land Survey Monument Record - P,Q-1

November 20, 2024 - In performing the 2024 - Forest County - "PLSS Corner Remonumentation and GPS Services" project, I found a 2.25" diameter galvanized iron pipe monument with a 3" diameter brass cap stamped to identify the corner. The monument is on solid ground ±2' from the shore of Long Lake, and extends ±6" above grade. I also found 2 of Cochrane's bearing trees 1 is alive and in good condition, the other is alive and lying near flat. I established 3 new reference monuments as shown below.

A-E 7.08(3)(c)(d) Plan view of corner with references to at least 4 witness monuments.



A-E 7.08(3)(e) 1858 Surveyor set a post, 1988 Surveyor found a 2 1/2" diameter galvanized iron pipe monument 36 inches long with a brass cap, 2008 Surveyor found the same. I found a 2.25" diameter galvanized iron pipe monument with a 3" diameter brass cap stamped to identify the corner in 2024.

A-E 7.08(3)(f) I accept this monument in good faith as a FOUND PERPETUATED LOCATION of the corner.

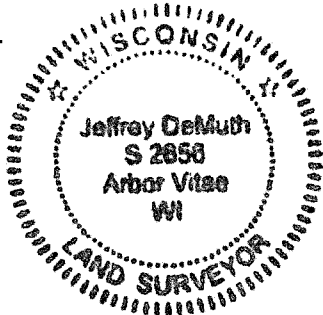
A-E 7.08(3)(g)(h) This corner was not determined through lost-corner-proportionate methods.

A-E 7.08(3)(i) I, Jeffrey L. DeMuth, Professional Land Surveyor No. S-2656, hereby certify that the corner location on this record was determined by me or under my direction and control, and that this U.S. Public Land Survey Monument Record is correct and complete to the best of my knowledge, and belief.

SIGNATURE

November 26, 2024

DATE



43914241900

43914241900

P25

Document Number

197227

REGISTER'S OFFICE
Forest County, WI

Received for record this 24th day
of April, AD. 2008
at 3:55 o'clock P.M. and
recorded in Vol. Corner Restoration
on page P-Q 25

Kay Sivanson
Deputy REGISTER

U.S. PUBLIC LAND SURVEY MONUMENT RECORD

(As Required by WI Adm. Code)

History of original corner establishment and subsequent restorations and descriptions of any record, monument, occupational, testimonial or other evidence considered:

1857 - Artemas Curtis, set meander post and made the following B.T.'s:

Cedar, 6", West, 17 lks., 11.22 feet.

Tamarack, 6", N 16° E, 47 lks., 31.02 feet.

2008 - I found no evidence of the original corner or accessories. Meander corner falls in Long Lake.

I established a witness corner to the meander corner by extending a line from the Meander Corner on the North shore of Long Lake on the east line of Section 24 through the Meander Corner at the Northeast Corner of Gov't Lot 3 of Section 24 South to the shore of Long Lake. I set a 2 1/2" Forest County Aluminum Pipe Monument as a witness corner to the Meander Corner.

Corner was: (Check All That Apply)

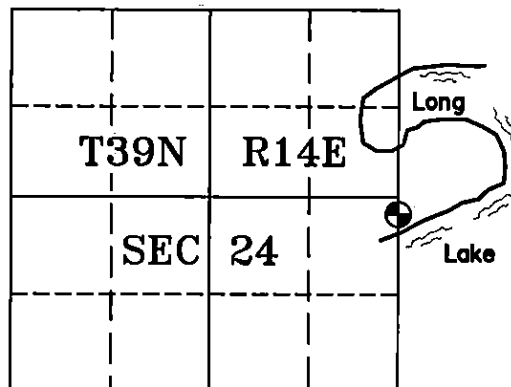
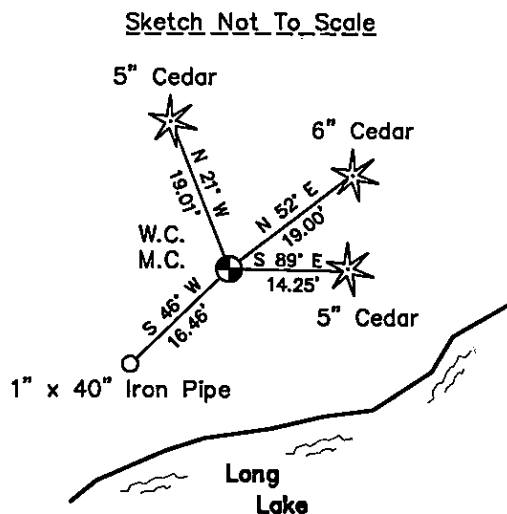
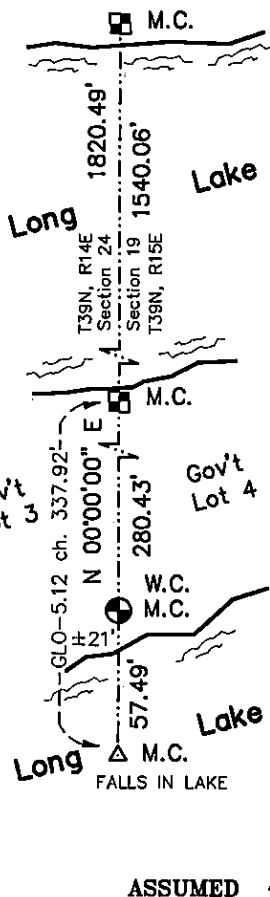
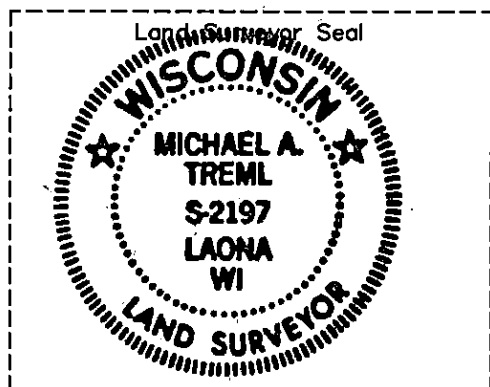
- ☐ Restored through acceptance of an obliterated evidence location.
- ☐ Restored through acceptance of a found perpetuated location.
- ☒ Considered a lost corner and reestablished through lost corner proportionate methods (include a plan view drawing showing distances and directions to other Public Land Survey Corners used for proportioning and determining the corner location).
- ☐ Restored or reestablished in a location that differs from a previous restoration or reestablishment (include a plan view drawing and indicate what was set and/or found).

Describe the monument and accessories used to perpetuate the location of this corner (include a plan view drawing and indicate what was set and/or found).

LEGEND:

- ☒ Existing 2 1/2" U.S.F.S. Galvanized Iron Pipe Monument w/brass cap
- ☒ Set 2 1/2" x 30" Forest County Aluminum Pipe Monument
- ☐ Set 1" x 40" Iron Pipe
- ☐ Computed Position

Note: All distances are taken to nail in side of tree.



I, Michael A. Trembl, RLS
(type or print name) certify that the corner location shown on this record was determined by me or under my direction and control and that this U.S. Public Land Survey Monument Record is correct and complete to the best of my knowledge and belief.

Michael A. Trembl 4/24/08
Signature Date

The Meander corner of
Section 24 T. 39 N., R. 14 E.
Forest County, WI

Index No. P, Q-25
2008

43914241900

P, Q-25

CERTIFIED LAND CORNER RESTORATION

State of Wisconsin }
County of Forest } ss.

I Jean F. Resvick, do hereby certify that on the 9 day of May, 19 75, I found evidence of the Meander corner of on East Side Section 24 Township 39 North Range 14 East, Fourth Principal Meridian, as described hereon; and that from this evidence I established a new monument and accessories as described hereon to perpetuate the original location of this corner:

Description of original monument and accessories and subsequent restorations:

Surveyed in 1858 by Artemas Curtis
33.32 chs. North between Sections to lake and set meander post
Cedar 10, S44W, 19 lks
Cedar 7, S48E, 17 lks
South 5.12 ch. intersect lake
North 23.20 ch. over lake

Description of corner evidence found:

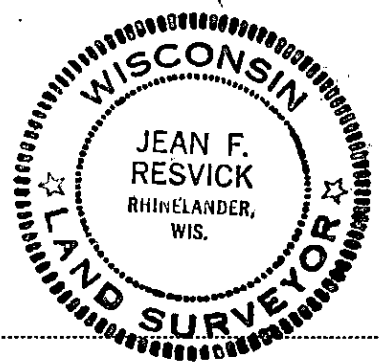
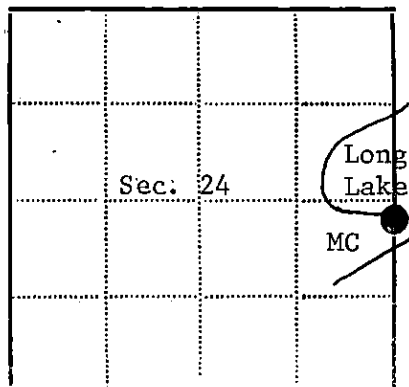
1 1/4 inch iron pipe at waters edge
Cedar 8, blow down scribed S88W 11.0 ft.
Cedar 14, S86E, 12 ft.
North over lake measured N0°06'27"W 1539.04 feet

Description of monument and accessories I established to perpetuate the location of this corner:

Replaced iron pipe with a 2 inch inside diameter galvanized iron pipe, 3 feet long, filled with concrete with brass cap stamped:
Meander Corner, T39N, R14E, R15E, S24, S19, 1976, S-802

Blazed and scribed new bearing trees
Cedar 14, S86E, 11.77 feet
Cedar 10, S2E, 26.05 feet

43914 241900



Resident witnesses.....

Dated at Rhinelander Wisconsin, this 13 day of May 19 77.

Signature Jean F. Resvick Title Land Surveyor
(County Surveyor, Registered Land Surveyor, or other duly authorized official)

Surveyors Registration No. S-802 DOCUMENT No. 111738

Office of Register of Deeds County of Forest

I hereby certify that the within instrument was filed in this office for record on the 27th day of June 19 77, and was filed in Book No. Page No. of County Records.

Signature Eugene Staszewski Title Register of Deeds

Township 39 North Range 14 East Section 24 Index No. P, Q-25, Page No.