

U.S. PUBLIC LAND SURVEY
MONUMENT RECORD

NOTE: This form is intended and designed to fulfill all requirements of Wisconsin Administrative Code, Chapter A-E 7.08 U.S. Public Land Survey Monument Record (3) (a-i)

A-E 7.08(3)(a) Identity of corner:
Southeast Corner Section 25,
Township 39 North, Range 14 East
of the Fourth Principal Meridian,
Town of Popple River, Forest County,
Wisconsin

WISCRS - FOREST COUNTY
N: 663,127.843 USft (XXX,XXX.XXX)
E: 894,194.071 USft (XXX,XXX.XXX)
Datum: NAD83 (2011)
GNSS Method RTK
GNSS Control WISCORS VRS



The coordinate value shown has been verified by the average of two or more GPS observations at a markedly different time. Coordinates shown in parenthesis are previously published values.

A-E 7.08(3)(b)

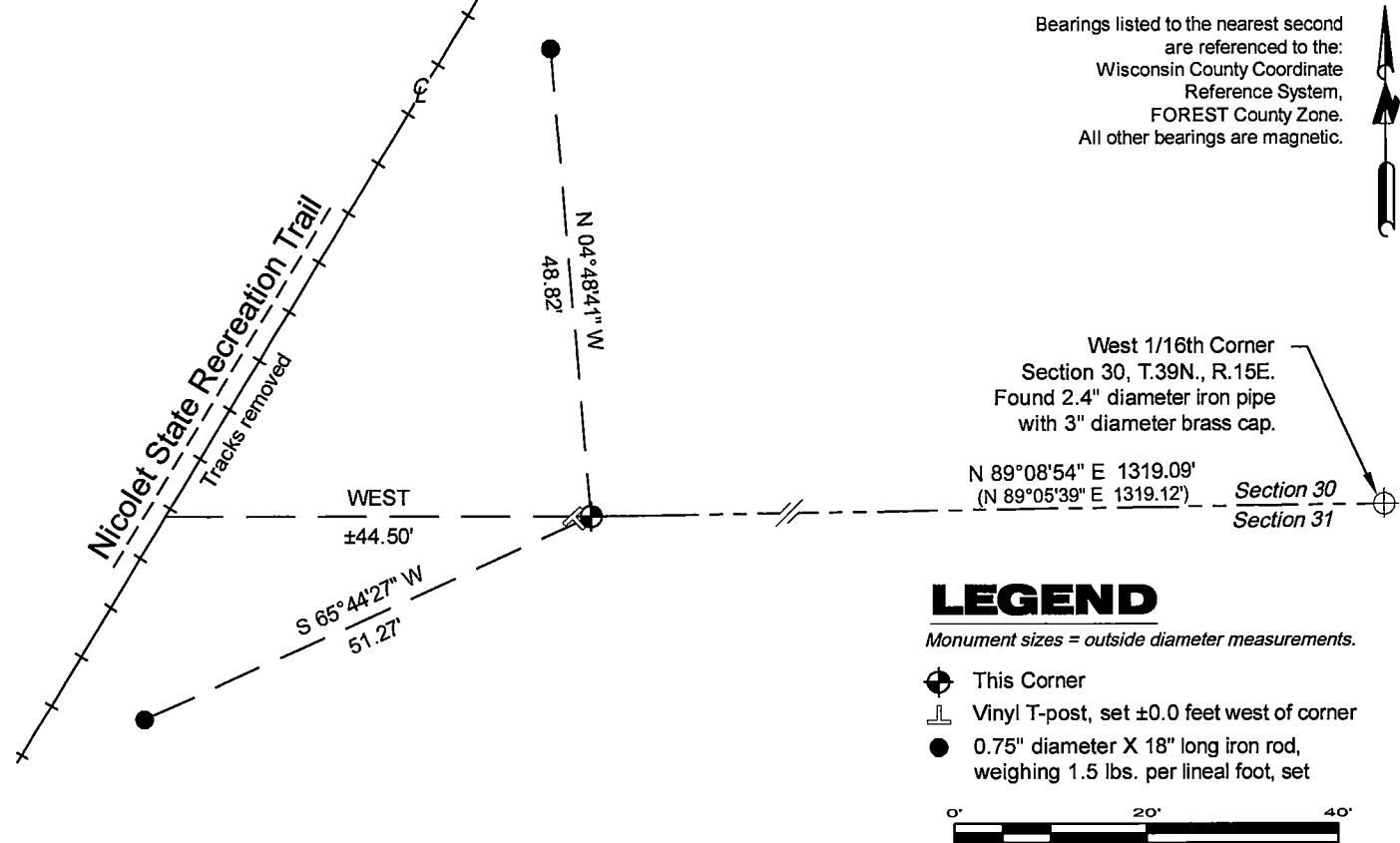
Original Surveyor: Artemas Curtis - May 1858
Cedar 10 - S 22° W, 16 Links, Cedar 8 - N 18° W, 28 Links
Cedar 10 - N 50° E, 40 Links, Cedar 10 - S 43° E, 38 Links

See previous U.S. Public Land Survey Monument Record - V-25 - January 21, 1986 - Surveyor 1107 - William B. Cochrane
NOTE: There is a MIS-FILED U.S.P.L.S. Monument Record - V-1 Forest Co. - October 2, 1999 Surveyor 1634 - Gary Lee Pisoni
THENCE:

- 1988 - Surveyor S 1107 - William B. Cochrane - indicates this position as "2 1/2" diameter galvanized iron pipe monument" on Forest Co. record Map #391425-19890412.
- 1988 - Surveyor S 1634 - Gary Lee Pisoni - indicates this position as "2 1/2" diameter galvanized iron pipe monument" on Forest Co. record Map #391436-19890504.
- May 18, 1988 - Surveyor S 00973 - Wayne G. Dobratz - indicates this position as "existing monumentation established by U.S.F.S." on Florence Co. record Map #M0319.

March 18, 2025 - In performing the 2024 - Forest County - "PLSS Corner Remonumentation and GPS Services" project, I found a pipe monument with a cap under ±1.5 feet of water (±12" of ice) in a boggy area east of the railroad grade. The monument was vertical and solid. I could feel the pipe, but could not measure it. The cap came off in my hand and fell to the bottom of the swamp. I placed a 1.6" diameter X 60" long iron pipe along the southwest edge of the monument, the top of which is flush with the water surface. I established 2 new reference monuments as shown below (no suitable trees available).

A-E 7.08(3)(c)(d) Plan view of corner with references to at least 4 witness monuments.



A-E 7.08(3)(e) 1858 Surveyor set a post, 1986 Surveyor found a 2" inside diameter galvanized iron pipe, with a brass cap stamped to identify corner, 1988 Surveyor's found the same. In 2025, I found a pipe monument with a cap beneath ±1.5' (±12" of ice). The monument found in 2025 could be aluminum.

A-E 7.08(3)(f) I accept this monument in good faith as a FOUND PERPETUATED LOCATION of the corner.

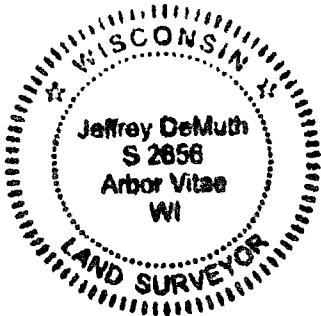
A-E 7.08(3)(g)(h) This corner was not determined through lost-corner-proportionate methods.

A-E 7.08(3)(i) I, Jeffrey L. DeMuth, Professional Land Surveyor No. S-2656, hereby certify that the corner location on this record was determined by me or under my direction and control, and that this U.S. Public Land Survey Monument Record is correct and complete to the best of my knowledge, and belief.

SIGNATURE

March 19, 2025

DATE



43914250000

43914250000

V25

CERTIFIED LAND CORNER RESTORATION

State of Wisconsin }
County of Forest } ss.

I William B. Cochrane, do hereby certify that on the 4th day of June, 1975, I found evidence of the Southeast Section corner of Section 25 Township 39 North, Range 14 East, Fourth Principal Meridian, as described hereon; and that from this evidence I established a new monument and accessories as described hereon to perpetuate the original location of this corner:

Description of original monument and accessories and subsequent restorations:

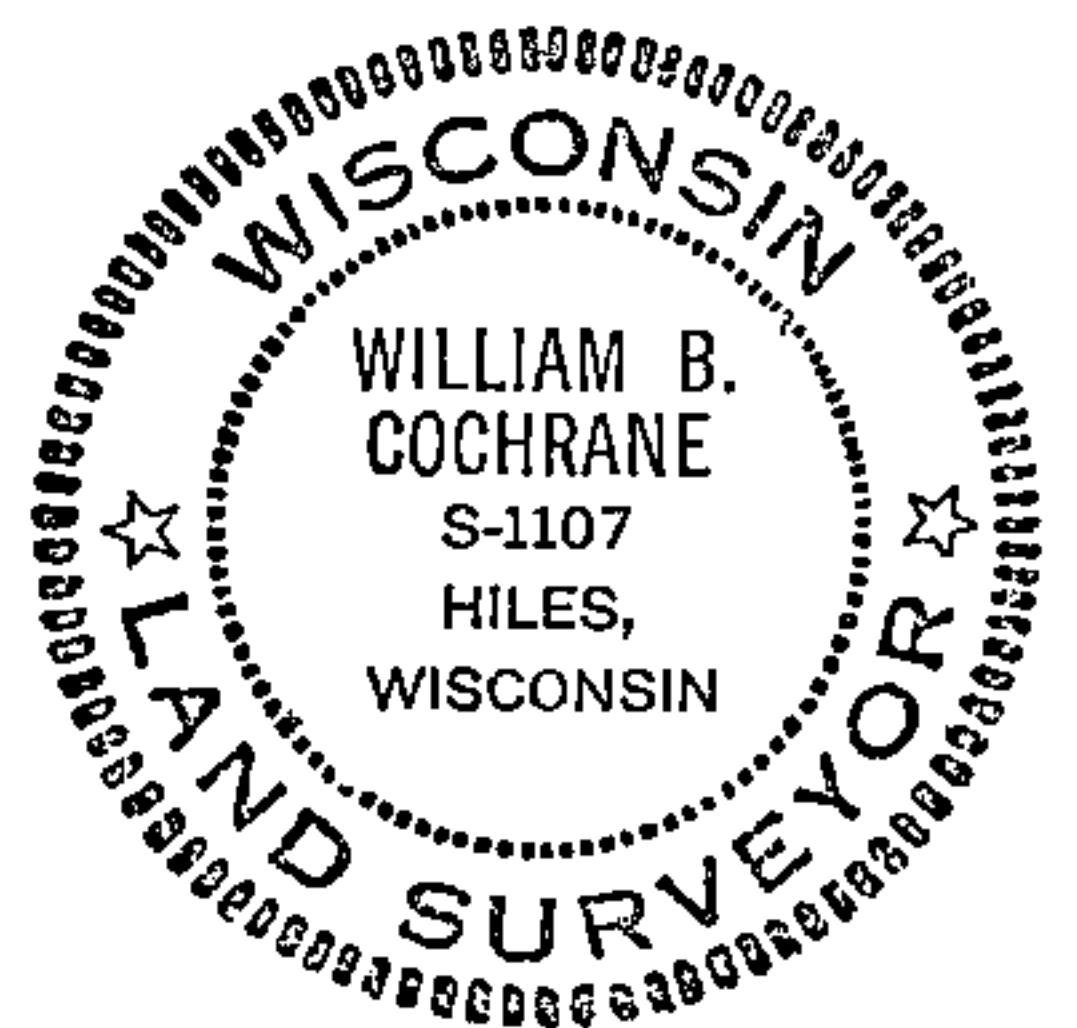
Surveyed in 1858 by Artemas Curtis
80.0 chains North between Sections 31 and 36
Cedar 10", S22W, 16 lks.
Cedar 8", N18W, 28 lks.
Cedar 10, N50E 40 lks.
Cedar 10, S43E, 38 lks.
4.00 chains South leave swamp
11.00 chains North leave swamp

Description of corner evidence found:

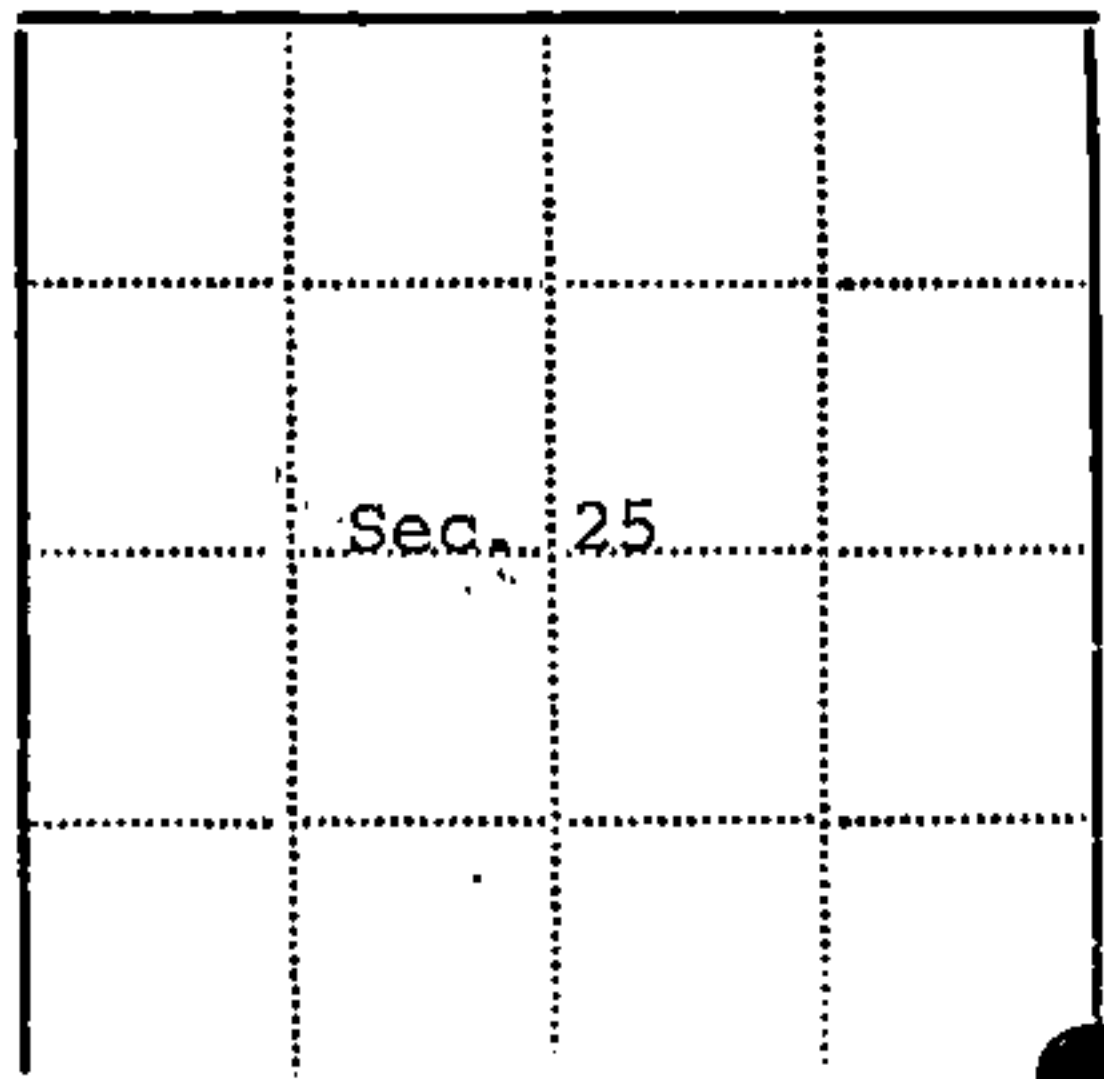
Scribed Cedar post
Cedar stump snag, 11 inch diameter, S22W, 16 lks. scribed
Rotted Cedar stump, S43E, 38 lks.
Rotted Cedar stump, N50E, 40 lks.

Description of monument and accessories I established to perpetuate the location of this corner:

Replaced post found with a 2 inch inside diameter galvanized pipe, 5 feet long filled with concrete with a brass cap stamped: T39N, R14E, R15E, S25, S30, S36, S31, 1975, S-1107
Monument is set in 1.5 ft. of water, no bearing trees available.
C/L of R.R. tracks bears west 44.5 feet.
Steel sign post set East alongside the monument.



43914250000



● - Corner monument restored
□ -

Resident witnesses.....

Dated at Three Lakes Wisconsin, this 24th day of December 1975.

Signature William B. Cochrane Title Survey Technician
(County Surveyor, Registered Land Surveyor, or other duly authorized official)

Surveyors Registration No. S-1107 DOCUMENT NUMBER 108558

Office of Register of Deeds County of Forest

I hereby certify that the within instrument was filed in this office for record on the 11th day of January 1976, and was filed in Book No. Page No. of County Records.

Signature Eugene Statyn Title Register of Deeds

Township 39 North, Range 14 East, Section 25, Index No. V-25, Page No.

V25

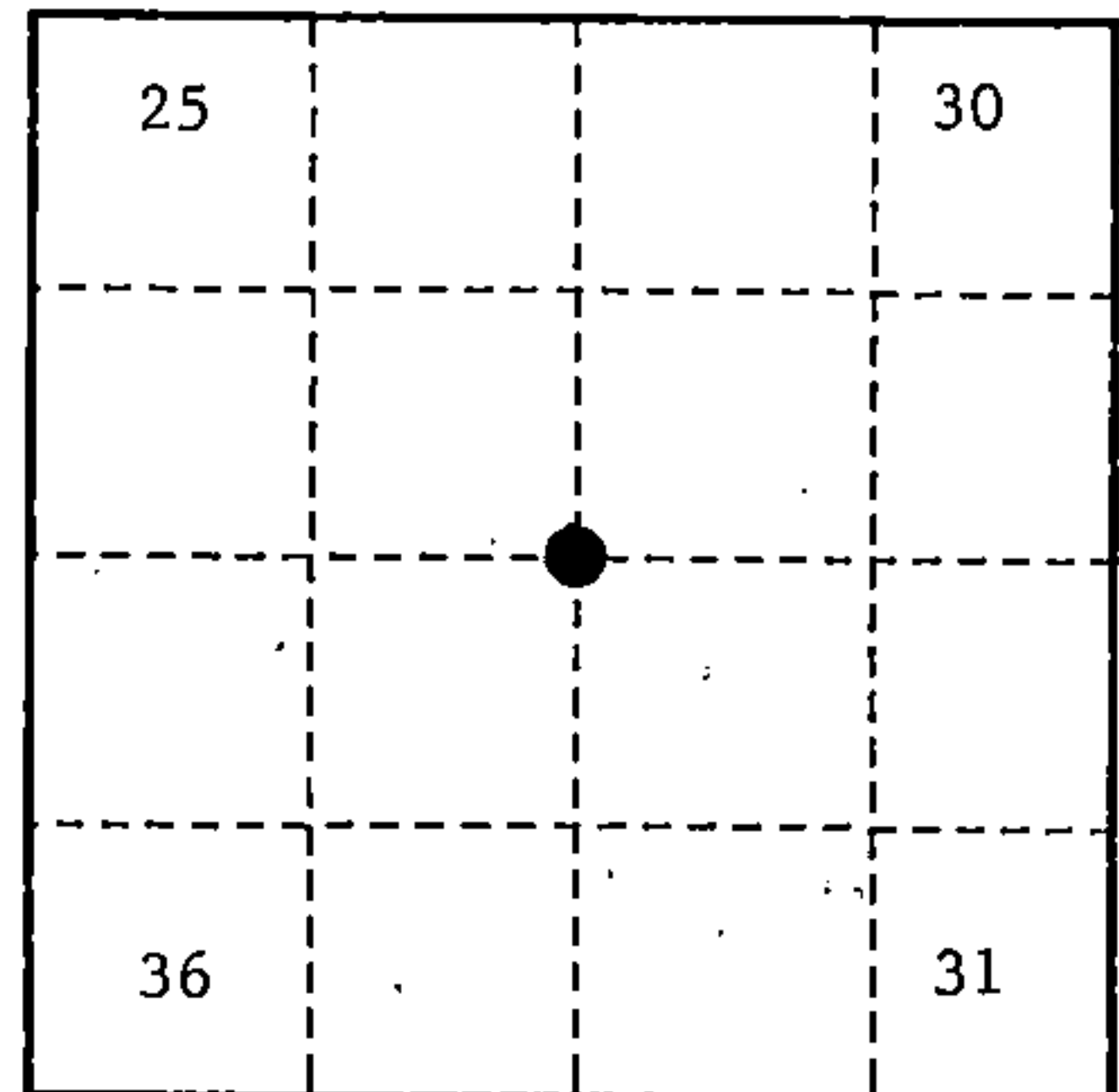
U. S. PUBLIC LAND SURVEY MONUMENT RECORD

INSTRUCTIONS:

This record shall show the location of the corner and shall include all of the following nine elements (a through i).

- (a) Identify the corner by reference to the U.S. public land survey system.
 O = Corner monument restored.

Section Corner to Sections 25, 30, 31 and 36,
 T39N, R13-14E, Forest County, Wisconsin.



- (b) Describe any record evidence, monument evidence, occupational evidence, testimonial evidence or any other material evidence you considered, and whether the monument was found or placed.

Original Government Survey in 1865 by William E. Daugherty and Alex McDill.

In 1974, William B. Cochrane, Land Surveyor with the Forest Service, restored the corner position according to Land Corner Certificate Document # 107236. At the corner position, set a 2" diameter galvanized iron pipe, 3 feet long, 2½ feet in the ground, with a brass cap stamped; T39N, R13E, R14E, S25, S30, S31, S36, 1975, S-1107.

In 1985, Cochrane found the monument as described above and the following bearing trees;

| | | | |
|-----------------|-----|-------|------------|
| Maple | 6" | N35°E | 15.50 feet |
| Basswood | 10" | S69°E | 21.16 feet |
| Maple | 10" | S71°W | 31.97 feet |
| Maple | 7" | N38°W | 32.95 feet |
| Steel Sign Post | | North | 0.50 feet |

Blazed and scribed the following new bearing trees;

| | | | |
|------------------------|-----|-----------|------------|
| Basswood | 13" | N40°E | 81.96 feet |
| Cedar | 12" | South | 74.30 feet |
| Maple | 15" | S35°W | 57.67 feet |
| Maple | 16" | N36°W | 91.67 feet |
| Re-set Steel Sign Post | | Southeast | 3.50 feet |

On 9-28-99, Gary L. Pisoni, RLS, found the monument as described above; found the bearing trees as described below, and made a new bearing tree as described below.

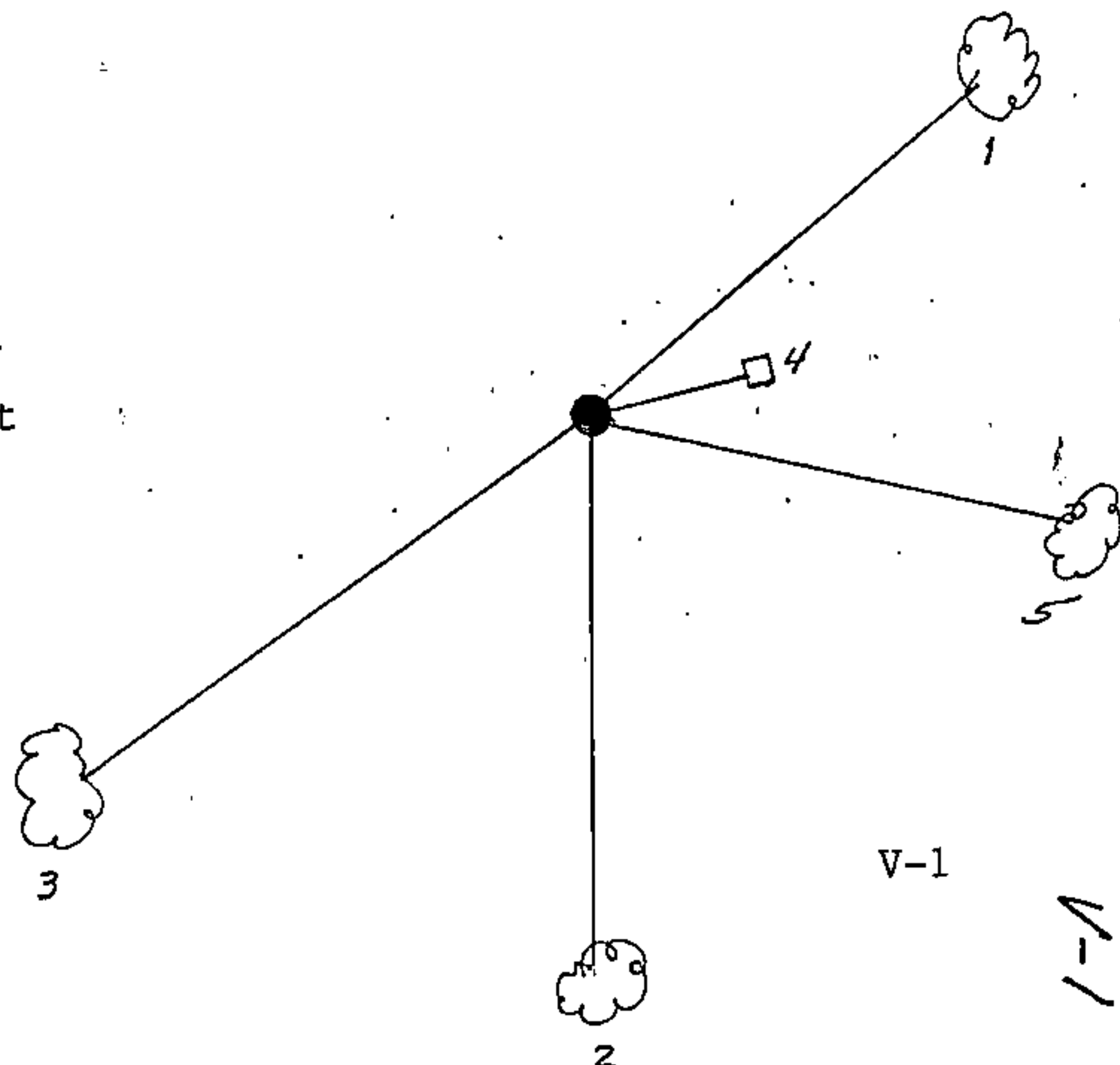
- (c) In the plan view drawing below, provide reference ties to at least 4 witness monuments, or, if the location is within a municipality, to at least 2 witness monuments. (witness monuments shall be made of concrete, natural stone, iron or other equally durable material.)

See previous Land Corner Certificate dated March 11, 1987, Document # 132388

- (d) Show a plan view drawing depicting the relevant monuments and reference ties which is sufficient in detail to enable accurate relocation of the corner monument if the corner monument is disturbed. Indicate north.

1. Basswood, 14", N40°E, 81.96 feet
2. Cedar, 17", South, 74.30 feet
3. Maple, 21", S35°W, 57.67 feet
4. Re-set Steel Sign Post, N56°E, 0.58 feet
5. Maple, 9", S77°E, 31.40 feet (NBT)

REGISTER'S OFFICE
 Forest County, Wis.
 Received for record this 27th day
 of October, A.D., 1999 at
10:05 o'clock A.M. and recorded
 in Vol. Corner Restoration
 page V-1.
Kay Swanson, Deputy
 Register of Deeds



43914 250000

(e) Describe any material discrepancy between the location of the corner as restored or reestablished and the location of that corner as previously restored or reestablished by distance and direction. Show the discrepancy on the plan view drawing under (d). above. Show the distances between the corner as previously restored or reestablished and (1) the corner as restored or reestablished, and (2) to at least 2 of the witness monuments shown on the drawing in (d), above.

None

(f) Was the corner restored through acceptance of (1) an obliterated evidence location, or, (2) a found perpetuated location?

Found perpetuated location.

(g & h) Was the corner reestablished through lost corner proportionate methods? If so, show the method, including the directions and distances to other public land survey corners used as evidence or used for proportioning in determining the corner location?

(1) I, Gary L. Pisoni

(type or print name) certify that the corner location shown on this record was determined by me or under my direction and control and that this U.S. Public Land Survey Monument Record is correct and complete to the best of my knowledge and belief.

Signature

10-2-99

Date

CERTIFICATE READY FOR FILING:

District Ranger



U.S. PUBLIC LAND SURVEY MONUMENT RECORD

Index No. V-25

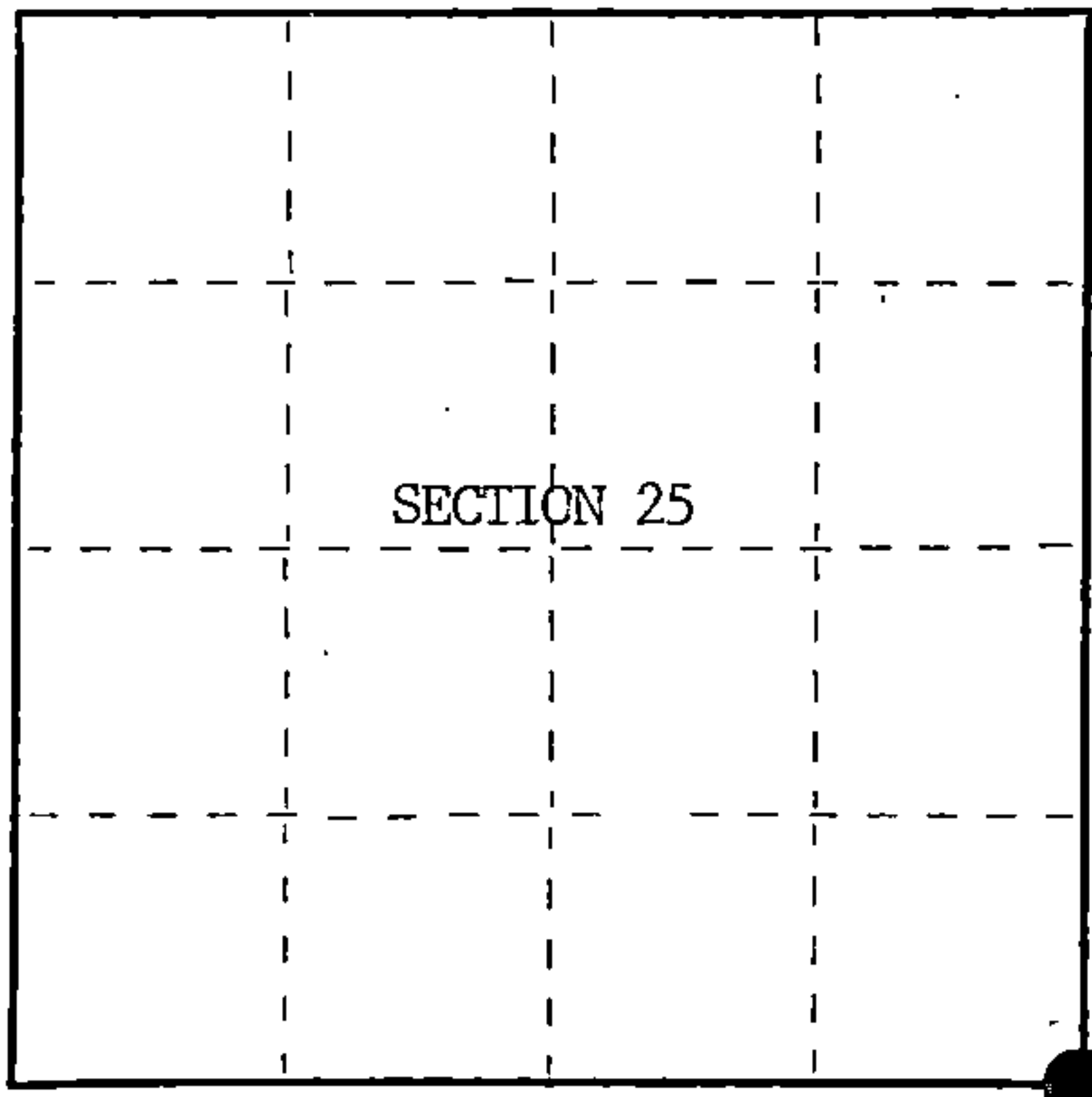
State of Wisconsin }
County of Forest } ss.

I William B. Cochrane, do hereby
certify that on the 31st day
of July, 1985, I found
evidence of the Southeast Section
corner of Section 25
Township 39, North, Range
14 East, Fourth Principal Meridian,
as described hereon; and that from this evidence
I established a new monument and accessories
as described hereon to perpetuate the original
location of this corner.

Resident witnesses:

David Brownell

State Plane Co-ordinates
N- 242,596.9210
E-2,337,640.7910



○ = Corner monument restored.

History of original corner establishment:

Original Government Survey in 1858 by Artemas Curtis.

Corner restored on June 4th, 1975, by William B. Cochrane, a Registered
Land Surveyor with the U.S. Forest Service.

See Certified Land Corner Restoration Certificate #108558, filed in the
Registrar of Deeds Office, in the Forest County Courthouse.

Description of corner evidence found:

Found monument as described and in place, from which the following bear;

| | | |
|------------------------|------|--------------------|
| C/L of Railroad Tracks | West | 44.50 feet |
| Steel Sign Post | East | Alongside monument |

Description of monument and accessories I established to perpetuate the original location of this corner.

| | | |
|------------------------|----|-----------|
| Re-set Steel Sign Post | SE | 3.00 feet |
|------------------------|----|-----------|

No BT's available

Dated at Hiles, Wis., this 21st day of January, 1986

Signature William B. Cochrane Title Land Surveyor Registration No. S-1107
(County Surveyor, Registered Land Surveyor, or other duly authorized official)

Office of Register of Deeds, County of Forest, I hereby certify that the within
instrument was filed in this office for record on the 11th day of March, 1987
at 3:30 clock P. M.

Paul Aschenbrenner
(Register of Deeds)

By _____ Deputy

FORM NO. 985-A
H.C. Miller Company
Madison, Wisconsin

Stock No. 26273

DOCUMENT NUMBER 132476

43914250000

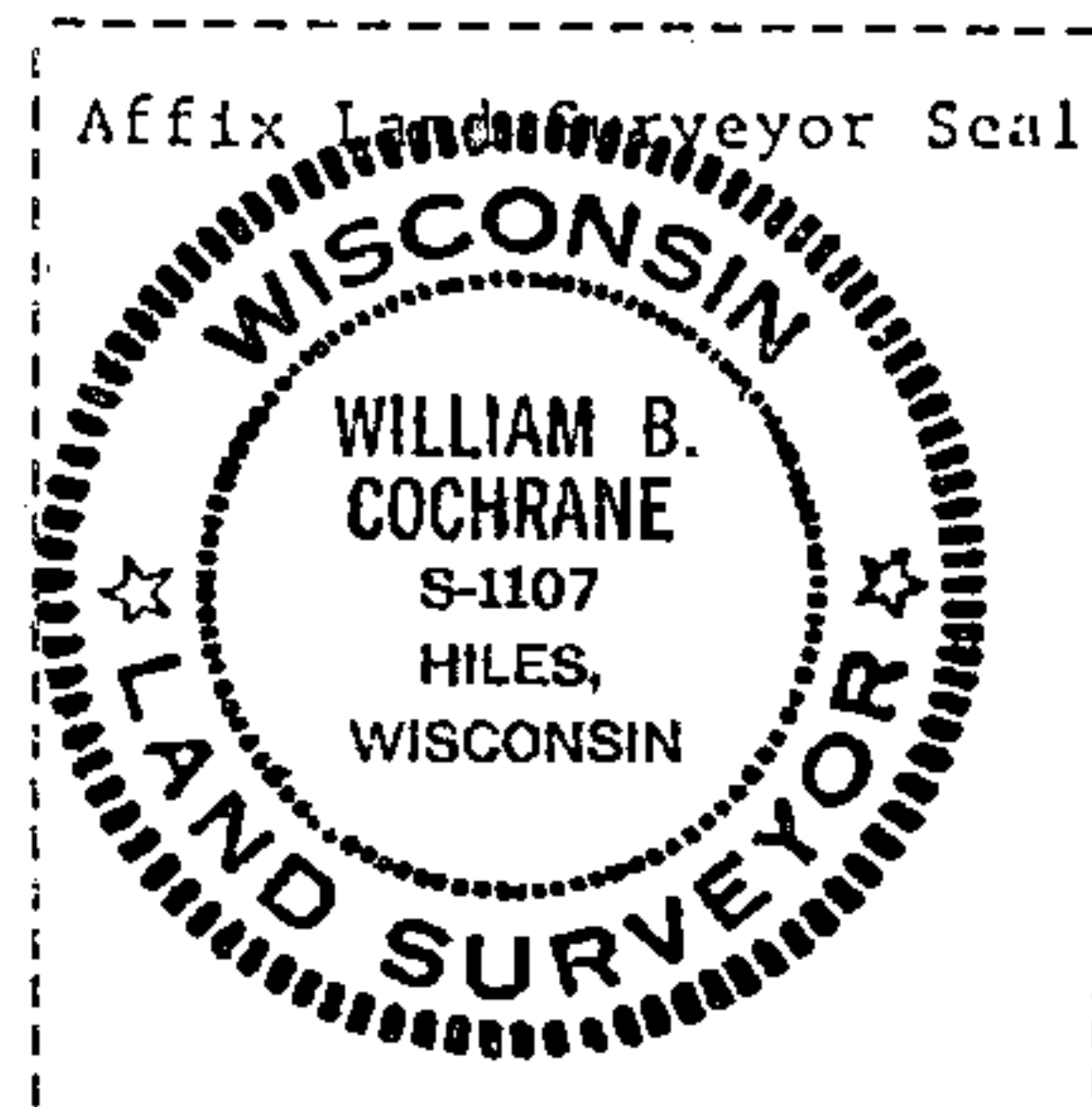
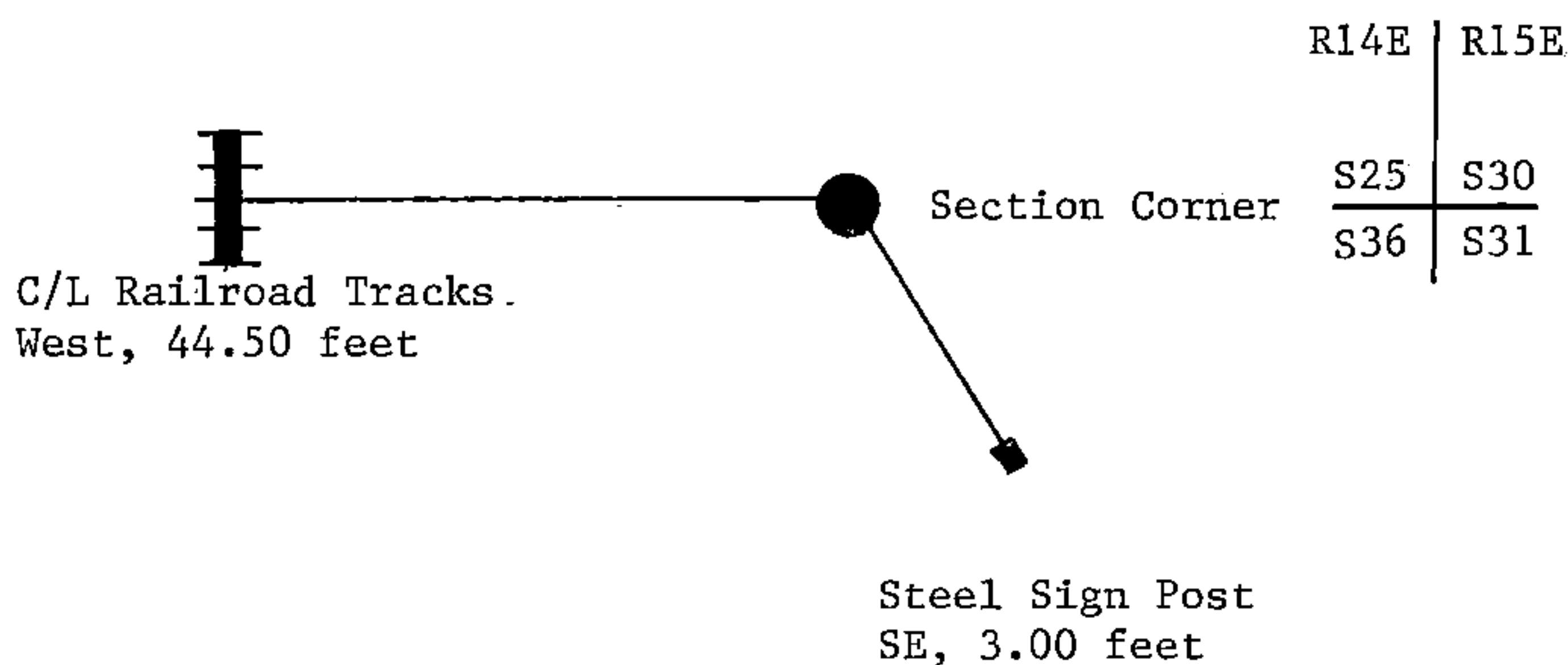
- (e) Describe any material discrepancy between the location of the corner as restored or reestablished and the location of that corner as previously restored or reestablished by distance and direction. Show the discrepancy on the plan view drawing under (d), above. Show the distances between the corner as previously restored or reestablished and (1) the corner as restored or reestablished, and (2) to at least 2 of the witness monuments shown on the drawing in (d), above.

See drawing below.

- (f) Was the corner restored through acceptance of (1) an obliterated evidence location, or, (2) a found perpetuated location?

Restored through acceptance of a found perpetuated location.

- (g&h) Was the corner reestablished through lost corner proportionate methods? If so, show the method, including the directions and distances to other public land survey corners used as evidence or used for proportioning in determining the corner location?



- (i) I, William B. Cochrane
(type or print name) certify that the corner location shown on this record was determined by me or under my direction and control and that this U.S. Public Land Survey Monument Record is correct and complete to the best of my knowledge and belief.

William B. Cochrane October 7, 1986
Signature Date

Survey requested by: David L. [Signature] 3-9-87
District Ranger Date