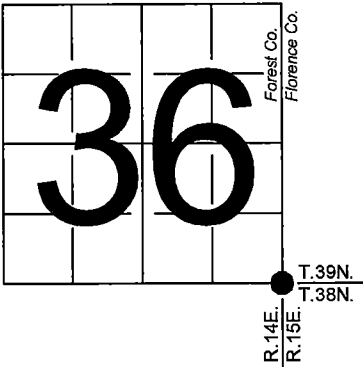


U. S. PUBLIC LAND SURVEY MONUMENT RECORD

NOTE: This form is intended and designed to fulfill all requirements of Wisconsin Administrative Code, Chapter A-E 7.08 U.S. Public Land Survey Monument Record (3) (a-i)

A-E 7.08(3)(a) Identity of corner:
Southeast Corner Section 36,
Township 39 North, Range 14 East
of the Fourth Principal Meridian,
Town of Popple River, Forest County,
Wisconsin

WISCRS - FOREST COUNTY
N: 657,874.801 USft (XXX,XXX.XXX)
E: 894,185.192 USft (XXX,XXX.XXX)
Datum: NAD83 (2011)
GNSS Method RTK
GNSS Control WISCORS VRS



The coordinate value shown has been verified by the average of two or more GPS observations at a markedly different time. Coordinates shown in parenthesis are previously published values.

A-E 7.08(3)(b)

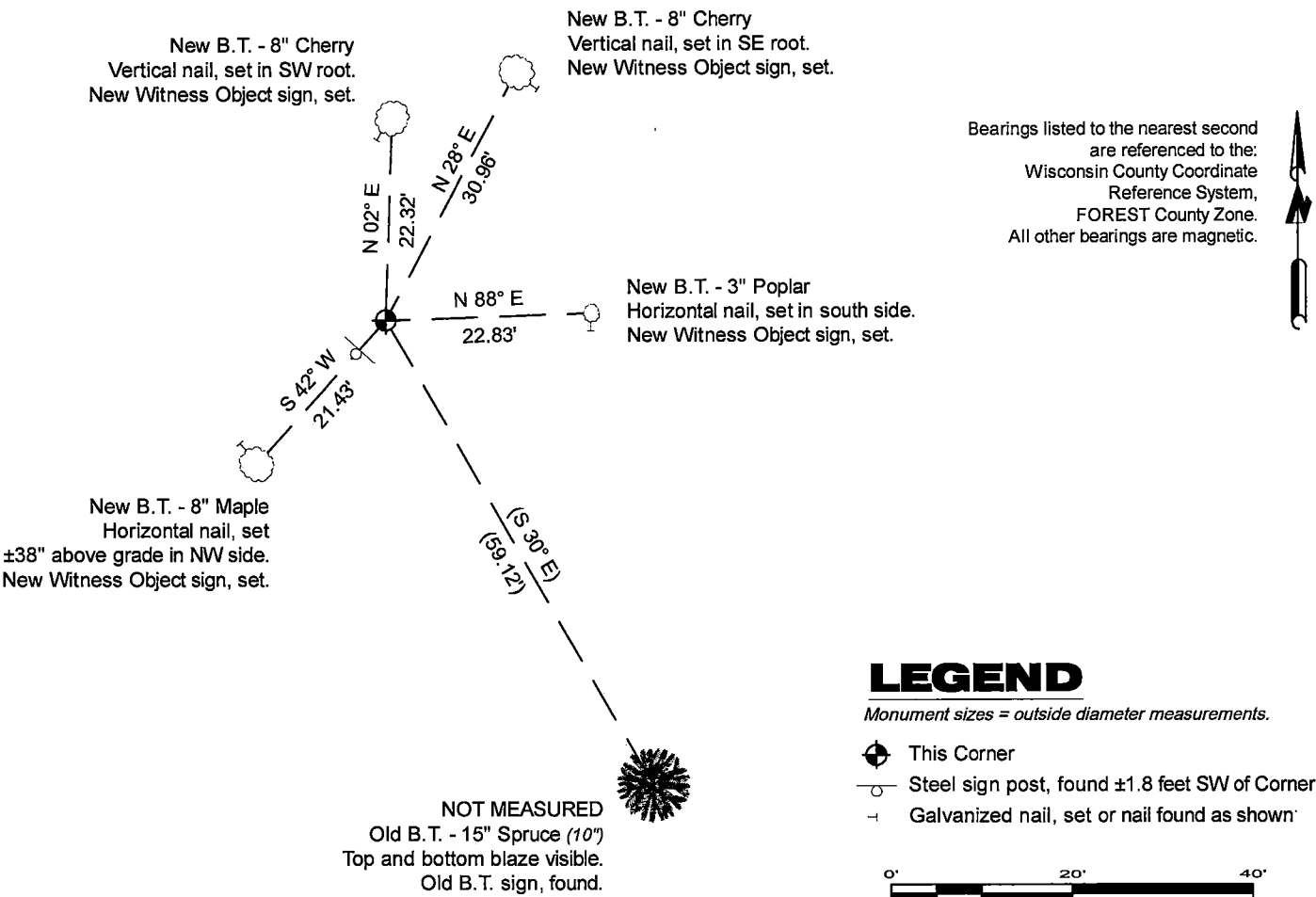
Original Surveyor: Artemas Curtis - October 1857
Cedar 15 - S 39° W, 27 Links, Cedar 15 - N 74° W, 57 Links
Cedar 8 - N 26° E, 36 Links, Cedar 12 - S 70° E, 49 Links

See previous U.S. Public Land Survey Monument Record - Z-25 - January 16, 1986 - Surveyor 1107 - William B. Cochrane - THENCE:

- 1988- Surveyor 1107 - William B. Cochrane - indicates this position as "2 1/2" diameter aluminum pipe monument with an aluminum cap" on Forest Co. record Map #391436-19890504.

November 15, 2024 - In performing the 2024 - Forest County - "PLSS Corner Remonumentation and GPS Services" project, I found a 2.25" diameter aluminum pipe monument with a 3.25" diameter aluminum cap stamped to identify the corner. The monument is on highland, on the west face of a hill and extends ±18" above grade. I also found 1 of Cochrane's bearing trees alive and in good condition. I established 4 new reference monuments as shown below.

A-E 7.08(3)(c)(d) Plan view of corner with references to at least 4 witness monuments.



A-E 7.08(3)(e) 1857 Surveyor set a post, 1985 Surveyor set a 2 1/2" diameter aluminum pipe monument, with aluminum cap stamped to identify corner, 1988 Surveyor found the same. I found a 2.25" diameter aluminum pipe monument with a 3.25" diameter aluminum cap stamped to identify the corner in 2024.

A-E 7.08(3)(f) I accept this monument in good faith as a FOUND PERPETUATED LOCATION of the corner.

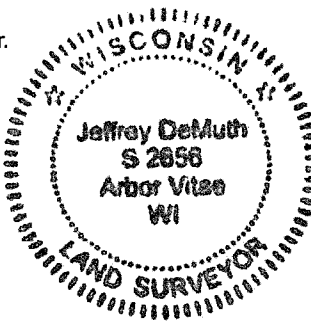
A-E 7.08(3)(g)(h) This corner was previously determined through lost-corner-proportionate methods.

A-E 7.08(3)(i) I, Jeffrey L. DeMuth, Professional Land Surveyor No. S-2656, hereby certify that the corner location on this record was determined by me or under my direction and control, and that this U.S. Public Land Survey Monument Record is correct and complete to the best of my knowledge, and belief.

SIGNATURE

November 26, 2024

DATE



43914360000

43914360000

Z25

U.S. PUBLIC LAND SURVEY MONUMENT RECORD

Index No. **Z-25**

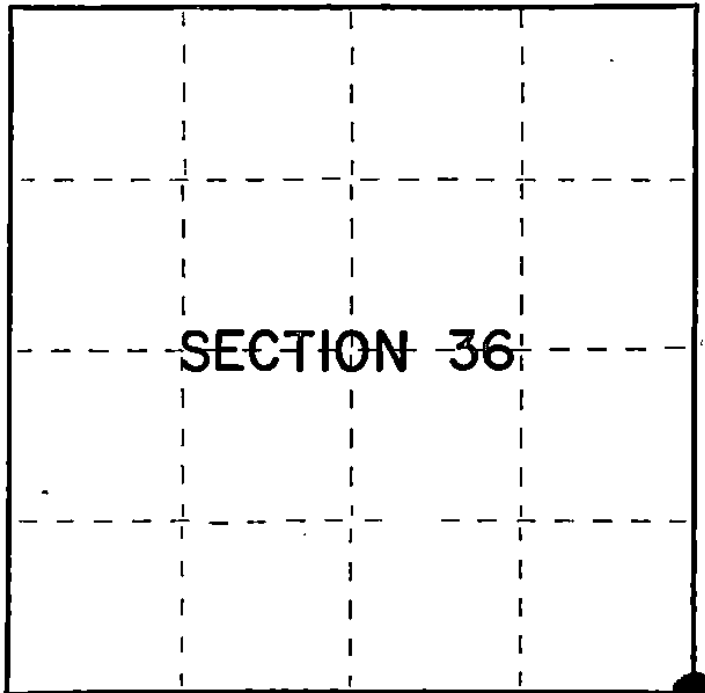
State of Wisconsin }
County of Forest } ss.

I William B. Cochrane, do hereby
certify that on the 26th day
of April, 1982, I found
evidence of the Southeast Section
corner of Section 36
Township 39, North, Range
14 East, Fourth Principal Meridian,
as described hereon; and that from this evidence
I established a new monument and accessories
as described hereon to perpetuate the original
location of this corner.

Resident witnesses:

Tony Tillman

David Brownell



○ = Corner monument restored.

History of original corner establishment:

Original Government Survey in 1857 by Artemas Curtis. North between Sections
1 and 6, 83.96 chains, set Township Corner, from which the following bear:

Cedar	15"	S39°W	29 lks.
Cedar	15"	N74°W	57 lks.
Cedar	8"	N26°E	36 lks.
Cedar	12"	S70°E	49 lks.

West 7.50 chains, enter swamp

Description of corner evidence found:

No original corner evidence was recovered.

See reverse side.

Description of monument and accessories I established to perpetuate the original location of this corner.

At the restored corner position, set a 2½" diameter aluminum pipe monument, 3 feet long,
30 inches in the ground, with an aluminum cap stamped: T39N, R14E, R15E, T38N, S1, S6,
S31, S36, 1982, S-1107. From which the following new blazed and scribed bearing
trees bear:

W. Birch	9"	N40°E	34.45 feet
Spruce	10"	S30°E	59.12 feet
Spruce	6"	S28°W	67.49 feet
Spruce	6"	N60°W	26.26 feet
Steel Sign Post		NW	0.50 feet

Dated at Hiles, Wis., this 3rd day of April, 1985.

Signature William B. Cochrane Title Land Surveyor Registration No. S-1107
(County Surveyor, Registered Land Surveyor, or other duly authorized official)

Office of Register of Deeds, County of Forest, I hereby certify that the within
instrument was filed in this office for record on the 24th day of April, 1985
at 1:00 o'clock P. M.

Paul Aschenbrenner
(Register of Deeds)

By _____ Deputy

FORM NO. 985-A
H.C. Miller Company

Stock No. 26273

Document Number **127877**

43914360000

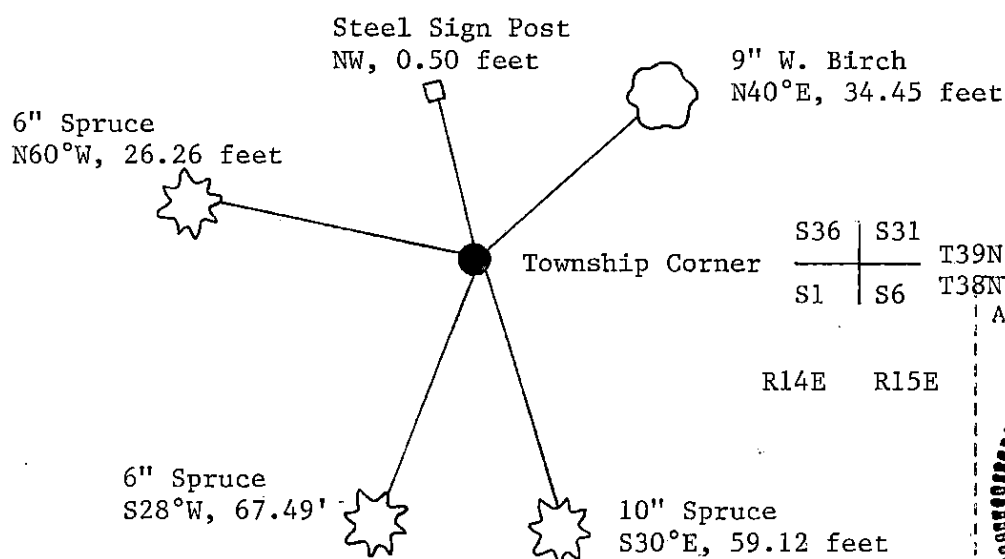
- (e) Describe any material discrepancy between the location of the corner as restored or reestablished and the location of that corner as previously restored or reestablished by distance and direction. Show the discrepancy on the plan view drawing under (d), above. Show the distances between the corner as previously restored or reestablished and (1) the corner as restored or reestablished, and (2) to at least 2 of the witness monuments shown on the drawing in (d), above.

See drawing below.


- (f) Was the corner restored through acceptance of (1) an obliterated evidence location, or, (2) a found perpetuated location?

- (g&h) Was the corner reestablished through lost corner proportionate methods? If so, show the method, including the directions and distances to other public land survey corners used as evidence or used for proportioning in determining the corner location?

The corner was restored at single proportionate distance from the Section Corner to Sections 1,6,7,and 12, and the Quarter Corner between Sections 31 and 36, and the definite swamp call to the West. Both the Quarter Corner to the North and the Section Corner to the South were restored from original evidence. No original evidence was recovered on any of the corners to the West, and the nearest original corner to the East is 2.5 miles, being the Quarter Corner between Sections 4 and 33, T38-39N. Because of the distortion these positions cause to the corner location, I choose not to double proportion in the Township Corner.



5N Affix Land Surveyor Seal



A circular seal with a double-lined border. The outer ring contains the text "WISCONSIN" at the top and "LAND SURVEYOR" at the bottom, separated by two stars. The center of the seal contains the text "WILLIAM B. COCHRANE", "S-1107", and "HILES, WISCONSIN" arranged vertically.

- (i) William B. Cochran
(type or print name) certify that (the corner location shown on this record was determined by me or under my direction and control and that this U.S. Public Land Survey Monument Record is correct and complete to the best of my knowledge and belief.

Signature William B. Cochran Date April 3, 1985

U.S. PUBLIC LAND SURVEY MONUMENT RECORD

Index No. Z-25

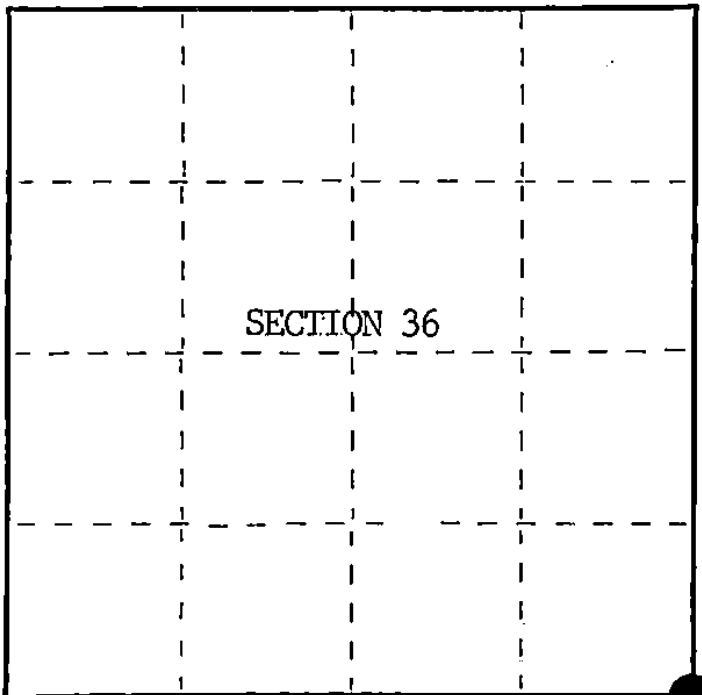
State of Wisconsin }
County of Forest } ss.

I William B. Cochrane, do hereby
certify that on the 31st day
of August, 1985, I found
evidence of the Southeast Section
corner of Section 36
Township 39 North, Range
14 East, Fourth Principal Meridian,
as described hereon; and that from this evidence
I established a new monument and accessories
as described hereon to perpetuate the original
location of this corner.

Resident witnesses:

David Brownell

State Plane Co-ordinates
N- 237,346.2160
E-2,337,723.2960



○ = Corner monument restored.

History of original corner establishment:

Original Government Survey in 1857 by Artemas Curtis.

Corner restored on April 26th, 1982, by William B. Cochrane, a Registered
Land Surveyor with the U.S Forest Service.

See Certified Land Corner Restoration Certificate filed in the Registrar of
Deeds Office in the Forest County Courthouse.

Description of corner evidence found:

Found monument as described and in place, from which the following bear;

White Birch	9"	N40°E	34.45 feet-Cut down for Aerial Photo Project
Spruce	10"	S30°E	59.12 feet
Spruce	6"	S28°W	67.49 feet
Spruce	6"	N60°W	26.26 feet-Cut down for Aerial Photo Project
Steel Sign Post		NW	1.00 feet

Description of monument and accessories I established to perpetuate the original location of this corner.

Blazed and scribed the following new bearing trees;

Balsam	13"	N48°W	52.86 feet
Balsam	14"	N18°W	63.50 feet

Re-set Steel Sign Post SW 3.00 feet

Dated at Hiles, Wis., this 16th day of Janaury, 1986

Signature William B. Cochrane Title Land Surveyor Registration No. S-1107
(County Surveyor, Registered Land Surveyor, or other duly authorized official)

Office of Register of Deeds, County of Forest, I hereby certify that the within
instrument was filed in this office for record on the 11th day of March, 1987.
at 3:30 o'clock P. M.

Paul Aschenbrenner
(Register of Deeds)

By Deputy

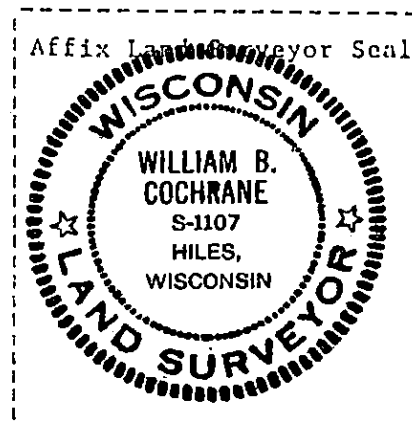
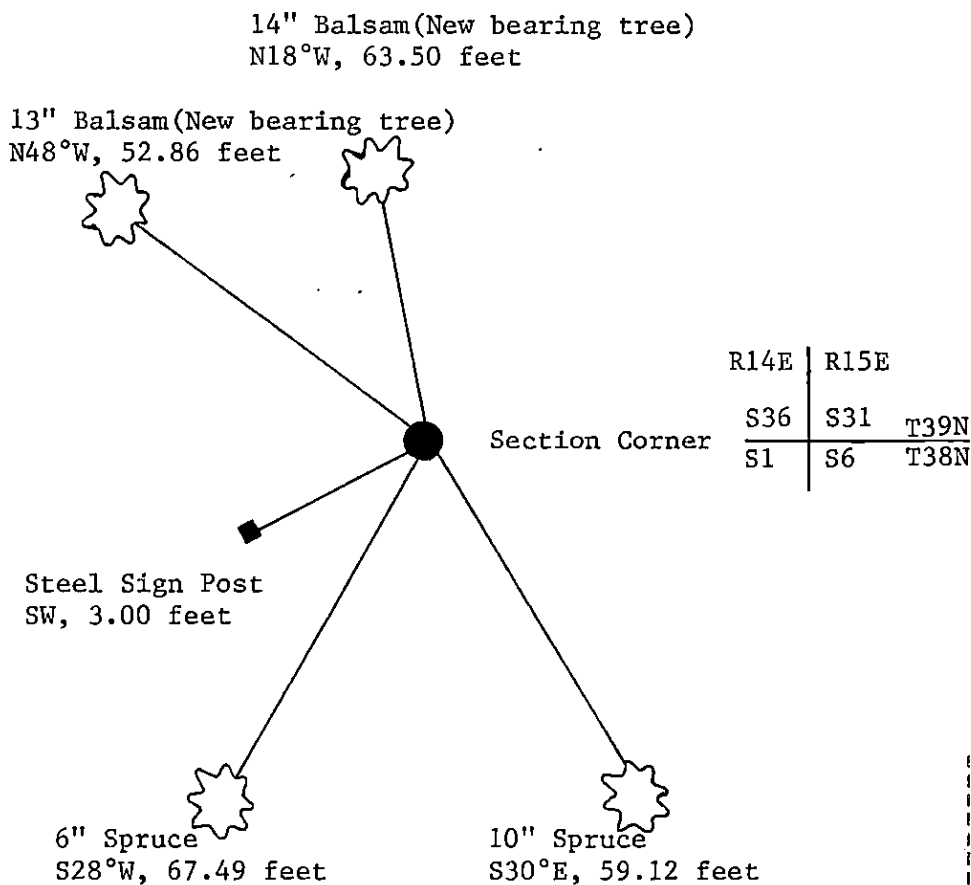
(e) Describe any material discrepancy between the location of the corner as restored or reestablished and the location of that corner as previously restored or reestablished by distance and direction. Show the discrepancy on the plan view drawing under (d), above. Show the distances between the corner as previously restored or reestablished and (1) the corner as restored or reestablished, and (2) to at least 2 of the witness monuments shown on the drawing in (d), above.

See drawing below.

(f) Was the corner restored through acceptance of (1) an obliterated evidence location, or, (2) a found perpetuated location?

Restored through acceptance of a found perpetuated location.

(g&h) Was the corner reestablished through lost corner proportionate methods? If so, show the method, including the directions and distances to other public land survey corners used as evidence or used for proportioning in determining the corner location?



(i) I, William B. Cochrane
(type or print name) certify that the corner location shown on this record was determined by me or under my direction and control and that this U.S. Public Land Survey Monument Record is correct and complete to the best of my knowledge and belief.

William B. Cochrane October 7, 1986
Signature Date

Survey requested by: Edward [Signature] 3-9-87

District Ranger Date

U.S. PUBLIC LAND SURVEY MONUMENT RECORD

Index No. A-25

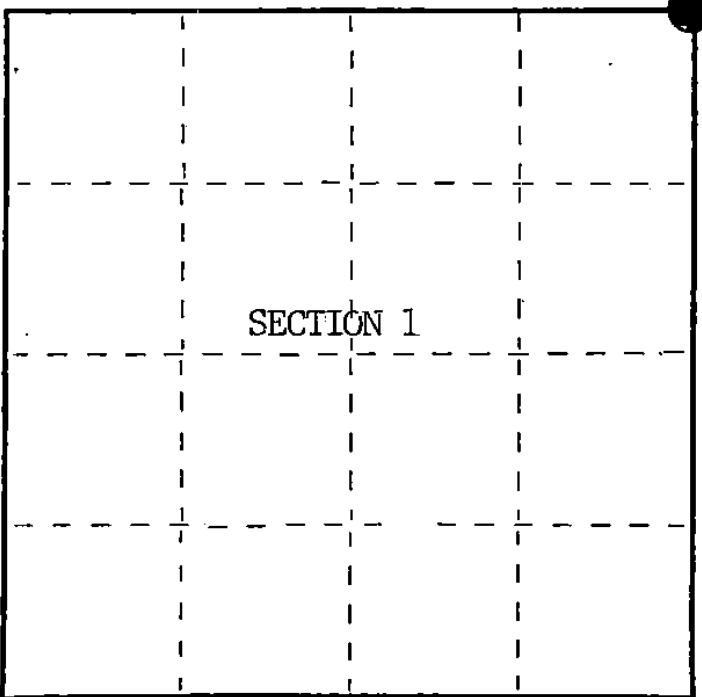
State of Wisconsin }
County of Forest } ss.

I, William B. Cochrane, do hereby
certify that on the 31st day
of August, 1985, I found
evidence of the Northeast Section
corner of Section 1
Township 38, North, Range
14 East, Fourth Principal Meridian,
as described hereon; and that from this evidence
I established a new monument and accessories
as described hereon to perpetuate the original
location of this corner.

Resident witnesses:

David Brownell

State Plane Co-ordinates
N- 237,346.2160
E-2,337,723.2960



○ = Corner monument restored.

History of original corner establishment:

Original Government Survey in 1857 by Artemas Curtis.

Corner restored on April 26th, 1982, by William B. Cochrane, a Registered
Land Surveyor with the U.S. Forest Service.

See Certified Land Corner Restoration Certificate filed in the Registrar of
Deeds Office in the Forest County Courthouse.

Description of corner evidence found:

Found monument as described and in place, from which the following bear;

White Birch	9"	N40°E	34.45 feet (Cut down for Aerial Photo Project)
Spruce	10"	S30°E	59.12 feet
Spruce	6"	S28°W	67.49 feet
Spruce	6"	N60°W	26.26 feet (Cut down for Aerial Photo Project)
Steel Sign Post		NW	1.00 feet

Description of monument and accessories I established to perpetuate the original location of this corner.

Blazed and scribed the following new bearing trees;

Balsam	13"	N48°W	52.86 feet
Balsam	14"	N18°W	63.50 feet

Re-set Steel Sign Post SW 3.00 feet

Dated at Hiles, Wis., this 16th day of January, 1986

Signature: William B. Cochrane Title: Land Surveyor Registration No. S-1107
(County Surveyor, Registered Land Surveyor, or other duly authorized official)

Office of Register of Deeds, County of Forest, I hereby certify that the within
instrument was filed in this office for record on the 11th day of March, 1987
at 3:30'clock P.M.

Paul Aschenbrenner
(Register of Deeds)

By Deputy

FORM NO. 985-A
H.C. Miller Company

Stock No. 26273

DOCUMENT NUMBER 132297

4291430000

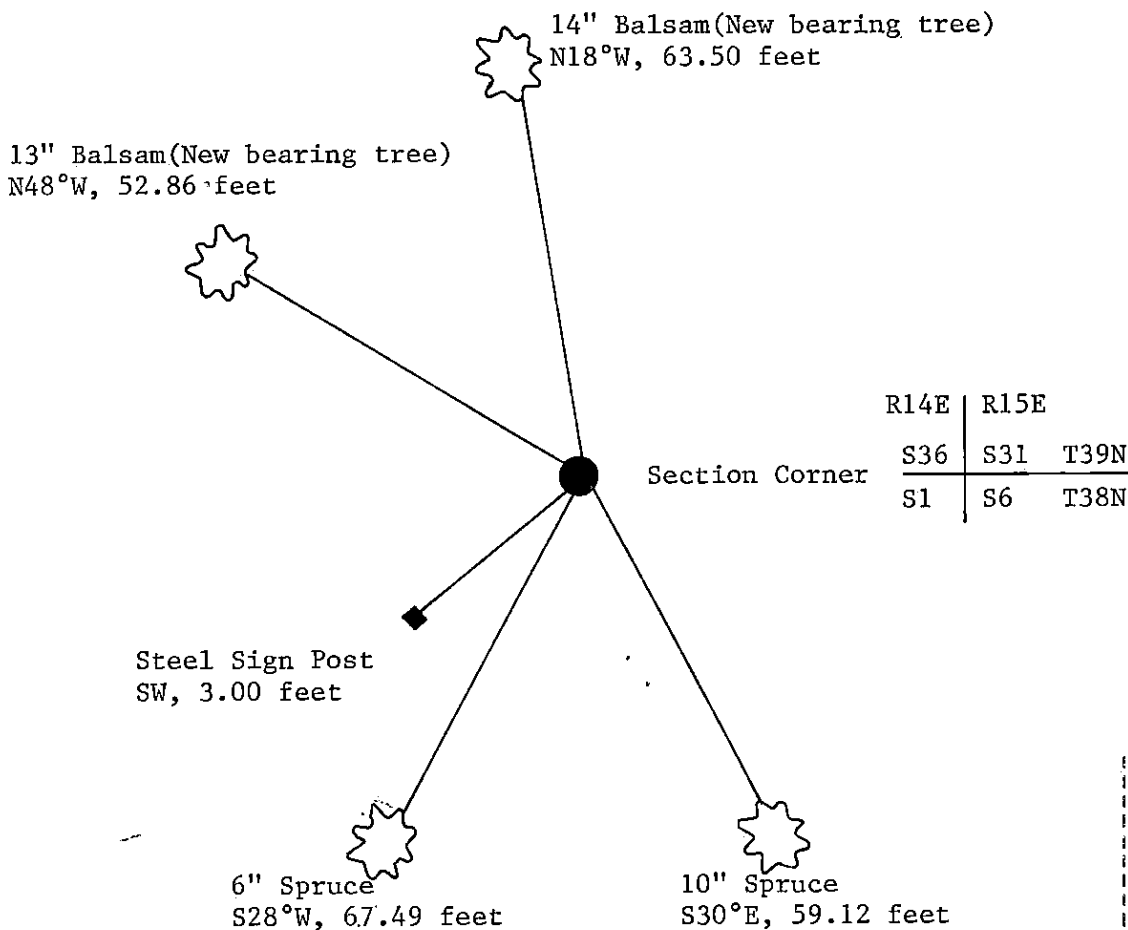
(e) Describe any material discrepancy between the location of the corner as restored or reestablished and the location of that corner as previously restored or reestablished by distance and direction. Show the discrepancy on the plan view drawing under (d), above. Show the distances between the corner as previously restored or reestablished and (1) the corner as restored or reestablished, and (2) to at least 2 of the witness monuments shown on the drawing in (d), above.

See drawing below.

(f) Was the corner restored through acceptance of (1) an obliterated evidence location, or, (2) a found perpetuated location?

Restored through acceptance of a found perpetuated location.

(g&h) Was the corner reestablished through lost corner proportionate methods? If so, show the method, including the directions and distances to other public land survey corners used as evidence or used for proportioning in determining the corner location?



(i) I, William B. Cochrane
(type or print name) certify that the corner location shown on this record was determined by me or under my direction and control and that this U.S. Public Land Survey Monument Record is correct and complete to the best of my knowledge and belief.

William B. Cochrane October 7, 1986
Signature Date

Survey requested by: Shaulanger 3-9-87
District Ranger Date

U.S. PUBLIC LAND SURVEY MONUMENT RECORD

Index No. **A-25**

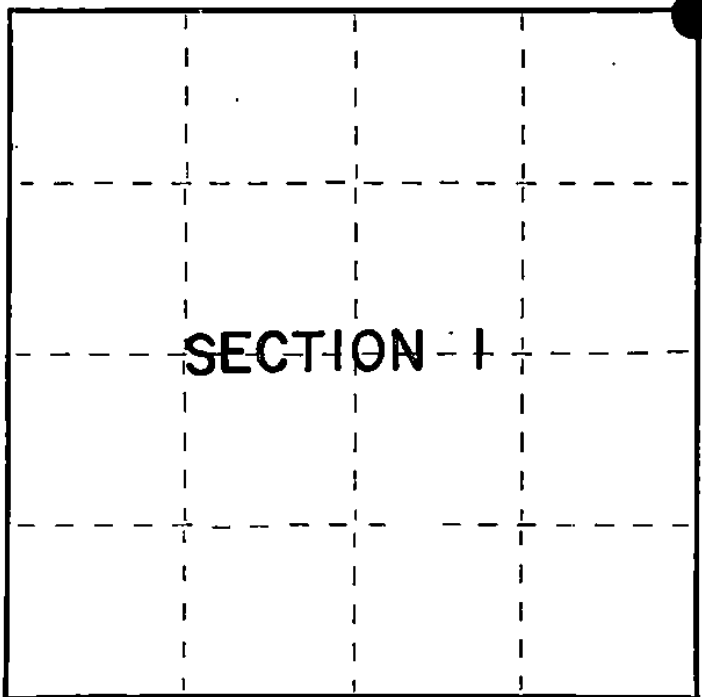
State of Wisconsin }
County of Forest } ss.

I, William B. Cochrane, do hereby
certify that on the 26th day
of April, 1982, I found
evidence of the Northeast Section
corner of Section 1
Township 38, North, Range
14 East, Fourth Principal Meridian,
as described hereon; and that from this evidence
I established a new monument and accessories
as described hereon to perpetuate the original
location of this corner.

Resident witnesses:

David Brownell

Tony Tillman



○ = Corner monument restored.

History of original corner establishment:

Original Government Survey in 1857 by Artemas Curtis. North between Sections 1 and 6,
83.96 chains, set Township Corner, from which the following bear:

Cedar	15"	S39°W	29 lks.
Cedar	15"	N74°W	57 lks.
Cedar	8"	N26°E	36 lks.
Cedar	12"	S70°E	49 lks.

West 7.50 chains, enter swamp

Description of corner evidence found:

No original corner evidence was recovered.

See reverse side

Description of monument and accessories I established to perpetuate the original location of this corner.

At the restored corner position, set a 2½" diameter aluminum pipe monument, 3 feet long,
30 inches in the ground, with an aluminum cap stamped: T39N, R14E, R15E, T38N, S1, S6,
S31, S36, 1982, S-1107. From which the following new blazed and scribed bearing trees bear:

W. Birch	9"	N40°E	34.45 feet
Spruce	10"	S30°E	59.12 feet
Spruce	6"	S28°W	67.49 feet
Spruce	6"	N60°W	26.26 feet
Steel Sign Post		NW	0.50 feet

Dated at Hiles, Wis., this 3rd day of April, 1985

Signature William B. Cochrane Title Land Surveyor Registration No. S-1107
(County Surveyor, Registered Land Surveyor, or other duly authorized official)

Office of Register of Deeds, County of Forest, I hereby certify that the within
instrument was filed in this office for record on the 24th day of April, 1985
at 1:00 o'clock P. M.

Paul Aschenbrenner
(Register of Deeds)

By _____ Deputy

FORM NO. 985-A
U.S. GOVERNMENT PRINTING OFFICE

Stock No. 26273

Document Number **127886**

4391430000

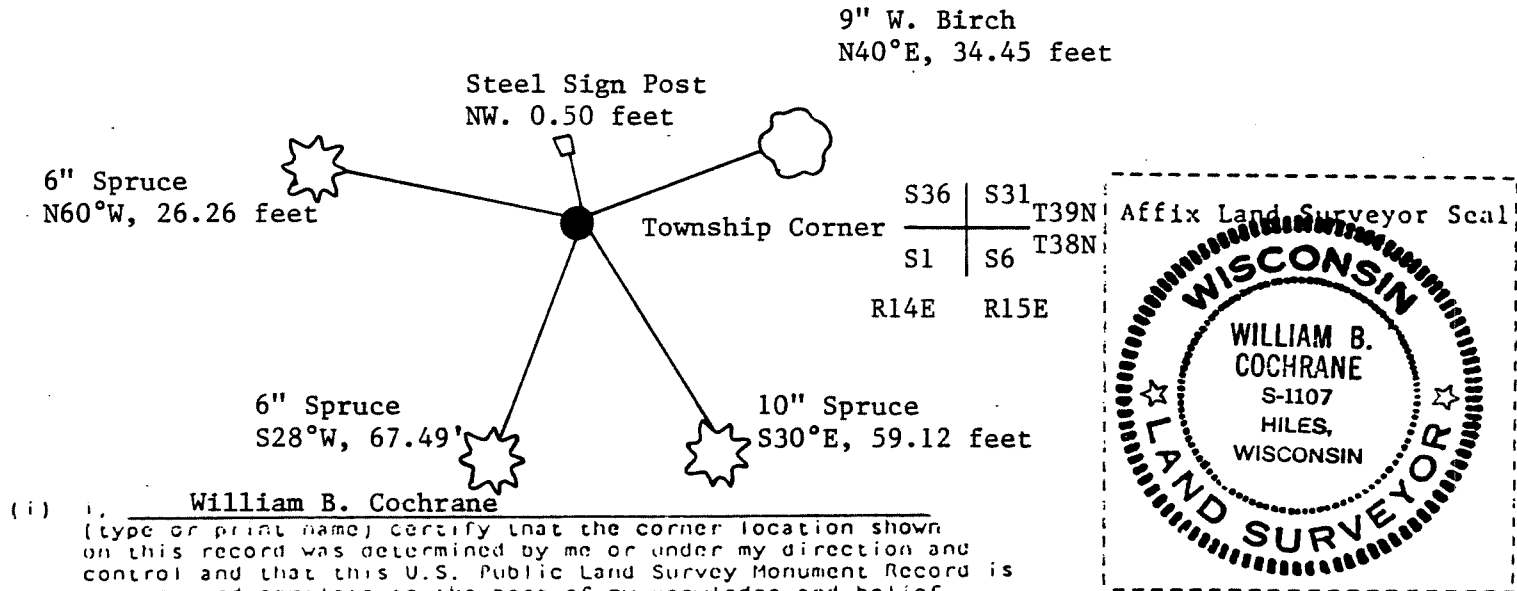
(e) Describe any material discrepancy between the location of the corner as restored or reestablished and the location of that corner as previously restored or reestablished by distance and direction. Show the discrepancy on the plan view drawing under (d), above. Show the distances between the corner as previously restored or reestablished and (1) the corner as restored or reestablished, and (2) to at least 2 of the witness monuments shown on the drawing in (d), above.

See drawing below.

(f) Was the corner restored through acceptance of (1) an obliterated evidence location, or, (2) a found perpetuated location?

(g&h) Was the corner reestablished through lost corner proportionate methods? If so, show the method, including the directions and distances to other public land survey corners used as evidence or used for proportioning in determining the corner location?

The corner position was restored at single proportionate distance from the Section Corner to Sections 1, 6, 7, and 12, and the Quarter Corner between Sections 31 and 36, and the definite swamp call to the West. Both the Quarter Corner to the North and the Section Corner to the South were restored from original evidence. No original evidence was recovered on any of the corners to the West, and the nearest original corner to the East is 2.5 miles, being the Quarter Corner between Sections 4 and 33, T38-39N. Because of the distortion these positions cause to the corner location, I choose not to double proportion in the Township Corner.



(i) I, William B. Cochrane
(type or print name) certify that the corner location shown on this record was determined by me or under my direction and control and that this U.S. Public Land Survey Monument Record is correct and complete to the best of my knowledge and belief.

William B. Cochrane April 3, 1985
Signature Date