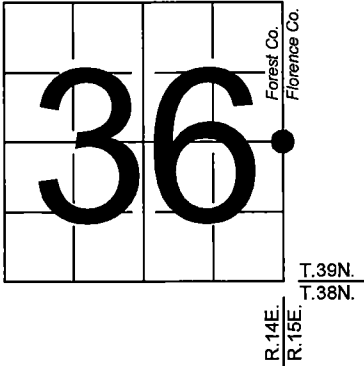


U. S. PUBLIC LAND SURVEY MONUMENT RECORD

NOTE: This form is intended and designed to fulfill all requirements of Wisconsin Administrative Code, Chapter A-E 7.08 U.S. Public Land Survey Monument Record (3) (a-i)

A-E 7.08(3)(a) Identity of corner:
East 1/4 Corner Section 36,
Township 39 North, Range 14 East
of the Fourth Principal Meridian,
Town of Popple River, Forest County,
Wisconsin

WISCRS - FOREST COUNTY
N: 660,500.100 USft (XXX,XXX.XXX)
E: 894,184.439 USft (XXX,XXX.XXX)
Datum: NAD83 (2011)
GNSS Method RTK
GNSS Control WISCORS VRS



The coordinate value shown has been verified by the average of two or more GPS observations at a markedly different time. Coordinates shown in parenthesis are previously published values.

A-E 7.08(3)(b)

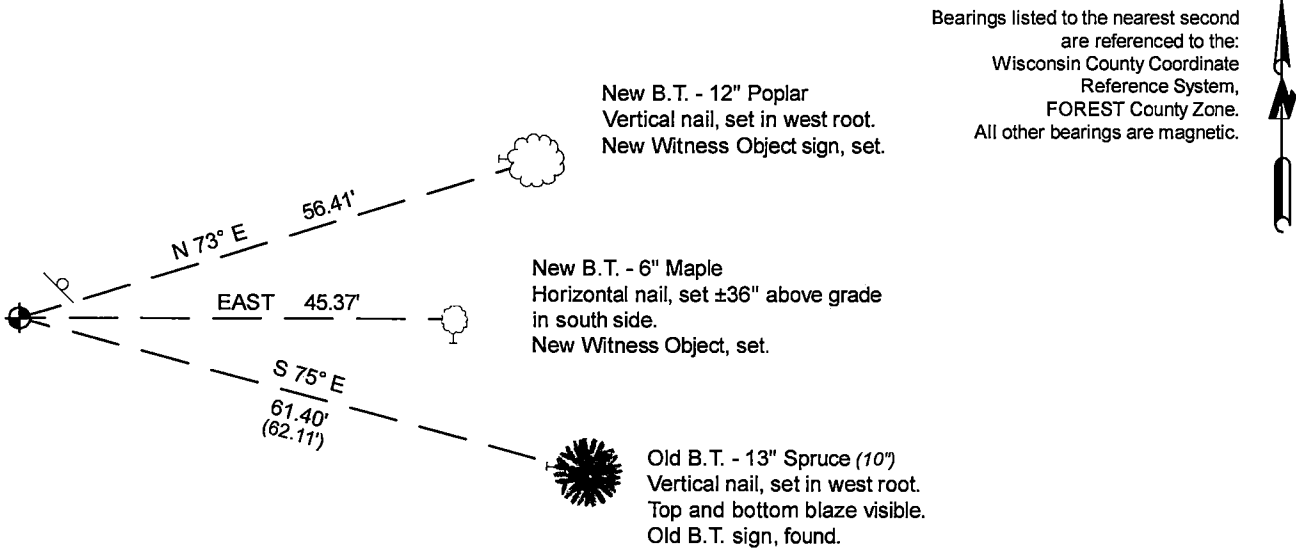
Original Surveyor: Artemas Curtis - May 1858
White Pine 14 - S 74° E, 86 Links, Yellow Pine 15 - N 46° E, 80 Links

See previous U.S. Public Land Survey Monument Record - X-1 (Florence Co.) - February 11, 1987 - Surveyor 1107 - William B. Cochrane
NOTE: There is a MIS-FILED U.S.P.L.S. Monument Record - X-1 Forest Co. - October 2, 1999 Surveyor 1634 - Gary Lee Pisoni
THENCE:

- 1988 - Surveyor 1107 - William B. Cochrane - indicates this position as "2 1/2 inch diameter galvanized iron pipe...with brass cap" on Forest Count record Map 391436-19890504.

November 15, 2024 - In performing the 2024 - Forest County - "PLSS Corner Remonumentation and GPS Services" project, I found a 2.25" diameter galvanized iron pipe monument with a 3" diameter brass cap stamped to identify the corner. The monument is in a Tamarack swamp and extends ±10" above grade. I also found 1 of Cochrane's bearing trees alive and in good condition. I established 2 new reference monuments as shown below.

A-E 7.08(3)(c)(d) Plan view of corner with references to at least 4 witness monuments.



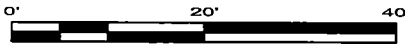
Bearings listed to the nearest second are referenced to the: Wisconsin County Coordinate Reference System, FOREST County Zone. All other bearings are magnetic.

NO OTHER SUITABLE TREES AVAILABLE

LEGEND

Monument sizes = outside diameter measurements.

- ⊕ This Corner
- ⊖ Steel sign post, found ±3 feet NE of Corner
- ⊖ Galvanized nail, set or nail found as shown



A-E 7.08(3)(e) 1858 Surveyor set a post, 1987 & 1988 Surveyor found a 2 1/2 inch diameter galvanized iron pipe with a brass cap stamped to identify corner. I found a 2.25" diameter iron pipe monument with a 3" diameter brass cap stamped to identify the corner.

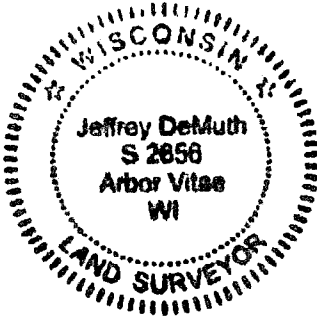
A-E 7.08(3)(f) I accept this monument in good faith as a FOUND PERPETUATED LOCATION of the corner.
A-E 7.08(3)(g)(h) This corner was not determined through lost-corner-proportionate methods.

A-E 7.08(3)(i) I, Jeffrey L. DeMuth, Professional Land Surveyor No. S-2656, hereby certify that the corner location on this record was determined by me or under my direction and control, and that this U.S. Public Land Survey Monument Record is correct and complete to the best of my knowledge, and belief.

SIGNATURE

November 26, 2024

DATE



43914362000

43914362000

X25

CERTIFIED LAND CORNER RESTORATION

State of Wisconsin

County of Forest

ss.

I Jean F. Resvick, do hereby certify that on the 5th day of March, 1974, I found evidence of the East quarter corner of Section 36 Township 39 north, Range 14 east, Fourth Principal Meridian, as described hereon; and that from this evidence I established a new monument and accessories as described hereon to perpetuate the original location of this corner:

Description of original monument and accessories and subsequent restorations:

Surveyed in 1858 by Artemas Curtis
40.00 chains north between sections 31 and 36
Set post for quarter corner
White pine 14, S74E, 86 lks.
Yellow pine 15, N46E, 80 lks.
8 chains north, east edge of pond and leave marsh

Description of corner evidence found:

Scribed post 3 ft. above ground
Old post with forest service location poster on, 1 foot above ground. (4 feet long)
Yellow pine stump bears N46E, 80 lks. from old post
White pine stump bears S74E, 86 lks. from old post
East edge of pond north 8 chains
Note: stumps on high ground on edge of marsh east of corner

Description of monument and accessories I established to perpetuate the location of this corner:

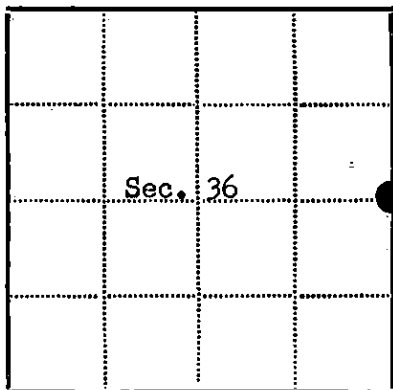
Replaced old post with a 2 inch inside diameter galvanized iron pipe 5 feet long, set on top of a 3 ft. Tamarack post, galvanized iron pipe filled with concrete, with brass cap stamped T39N, R14E, R15E, 1/4, S36, S31, 1974, S-802.

Blazed and scribed the following new bearing trees:

White Spruce 7, S75E, 62.11 ft.
Tamarack 4, N19W, 36.38 ft.



4391436 2000



● - Corner monument restored



Resident witnesses.....

Dated at Rhineland Wisconsin, this 7th day of March, 1974.

Signature Jean F. Resvick Title Land Surveyor
(County Surveyor, Registered Land Surveyor, or other duly authorized official)

Surveyors Registration No. S-802 DOCUMENT Number 105104

Office of Register of Deeds County of Forest

I hereby certify that the within instrument was filed in this office for record on the 5th day of April, 1974, and was filed in Book No. 1 Page No. 1 of County Records.

Signature Eugene Stetson Title Register of Deeds

Township 39 North, Range 14 East, Section 36, Index No. X-25, Page No. 1

X25

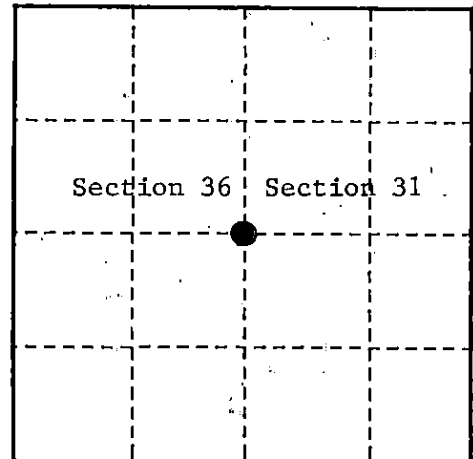
U. S. PUBLIC LAND SURVEY MONUMENT RECORD

INSTRUCTIONS:

This record shall show the location of the corner and shall include all of the following nine elements (a through i).

- (a) Identify the corner by reference to the U.S. public land survey system.
 O = Corner monument restored.

Quarter Corner common to Sections 31 and 36,
 T39N, R13-14E, Forest County, Wisconsin



- (b) Describe any record evidence, monument evidence, occupational evidence, testimonial evidence or any other material evidence you considered, and whether the monument was found or placed.

Original Government Survey in 1865 by William E. Daugherty and Alex McDill.

In 1974, William B. Cochrane, Land Surveyor with the Forest Service, found a cedar post, 2 feet long, and original bearing tree evidence. In place of post, set a 2" diameter galvanized iron pipe, 3 feet long, 2½ feet in the ground, with a brass cap stamped; T39N, R13E, R14E, S31, S36, 1975, S-1107. Blazed and scribed the following bearing trees;

Maple	7"	N38°W	13.78 feet
Basswood	7"	N34°W	7.26 feet
Steel Sign Post		Northwest	0.50 feet

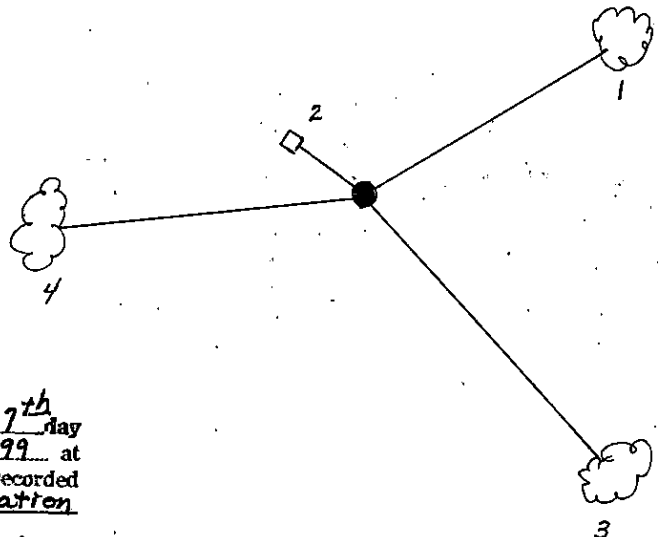
On 9-28-99, Gary L. Pisoni, RLS, found the monument as described above, found the bearing trees as described below, and made new bearing trees as described below.

See previously recorded Land Corner Certificate, Document #107234.

- (c) In the plan view drawing below, provide reference ties to at least 4 witness monuments, or, if the location is within a municipality, to at least 2 witness monuments. (witness monuments shall be made of concrete, natural stone, iron or other equally durable material.)

- (d) Show a plan view drawing depicting the relevant monuments and reference ties which is sufficient in detail to enable accurate relocation of the corner monument if the corner monument is disturbed. Indicate north.

1. Maple, 10", N41°E, 13.74 feet
2. Steel Sign Post, Northwest, 0.41 feet
3. Maple, 10", S28°E, 35.26 feet(NBT)
4. Maple, 7", S85°W, 59.97 feet(NBT)



REGISTER'S OFFICE
 Forest County, Wis.
 Received for record this 27th day
 of October A.D., 1999 at
10:05 o'clock A.M. and recorded
 in Vol. Corner Restoration
 page X-1

Kay Swanson, Deputy
 Register of Deeds

X-1

4391436 2000

X-1

(e) Describe any material discrepancy between the location of the corner as restored or reestablished and the location of that corner as previously restored or reestablished by distance and direction. Show the discrepancy on the plan view drawing under (d). above. Show the distances between the corner as previously restored or reestablished and (1) the corner as restored or reestablished, and (2) to at least 2 of the witness monuments shown on the drawing in (d), above.

None

(f) Was the corner restored through acceptance of (1) an obliterated evidence location, or, (2) a found perpetuated location?

Found perpetuated location.

(g & h) Was the corner reestablished through lost corner proportionate methods? If so, show the method, including the directions and distances to other public land survey corners used as evidence or used for proportioning in determining the corner location?

(1) I, Gary L. Pisoni

(type or print name) certify that the corner location shown on this record was determined by me or under my direction and control and that this U.S. Public Land Survey Monument Record is correct and complete to the best of my knowledge and belief.

Signature

10-2-99

Date

CERTIFICATE READY FOR FILING:

District Ranger

