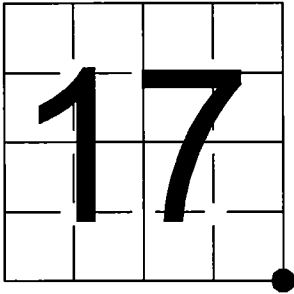


U.S. PUBLIC LAND SURVEY
MONUMENT RECORD

NOTE: This form is intended and designed to fulfill all requirements of Wisconsin Administrative Code, Chapter A-E 7.08 U.S. Public Land Survey Monument Record (3) (a-l)

A-E 7.08(3)(a) Identity of corner:
Southeast Corner Section 17,
Township 40 North, Range 12 East
of the Fourth Principal Meridian,
Town of Hiles, Forest County, Wisconsin

WISCRS - FOREST COUNTY
N: 705,178.818 USft (XXX,XXX.XXX)
E: 809,750.557 USft (XXX,XXX.XXX)
Datum: NAD83 (2011)
GNSS Method RTN
GNSS Control WISCORS VRS



The coordinate value shown has been verified by the average of two or more GPS observations at a markedly different time. Coordinates shown in parenthesis are previously published values.

A-E 7.08(3)(b)

Original Surveyor: William E. Daugherty - September 15, 1859 to September 19, 1859
Tamarac 8 - S 72° E, 62 Links, Tamarac 8 - S 12° W, 60 Links

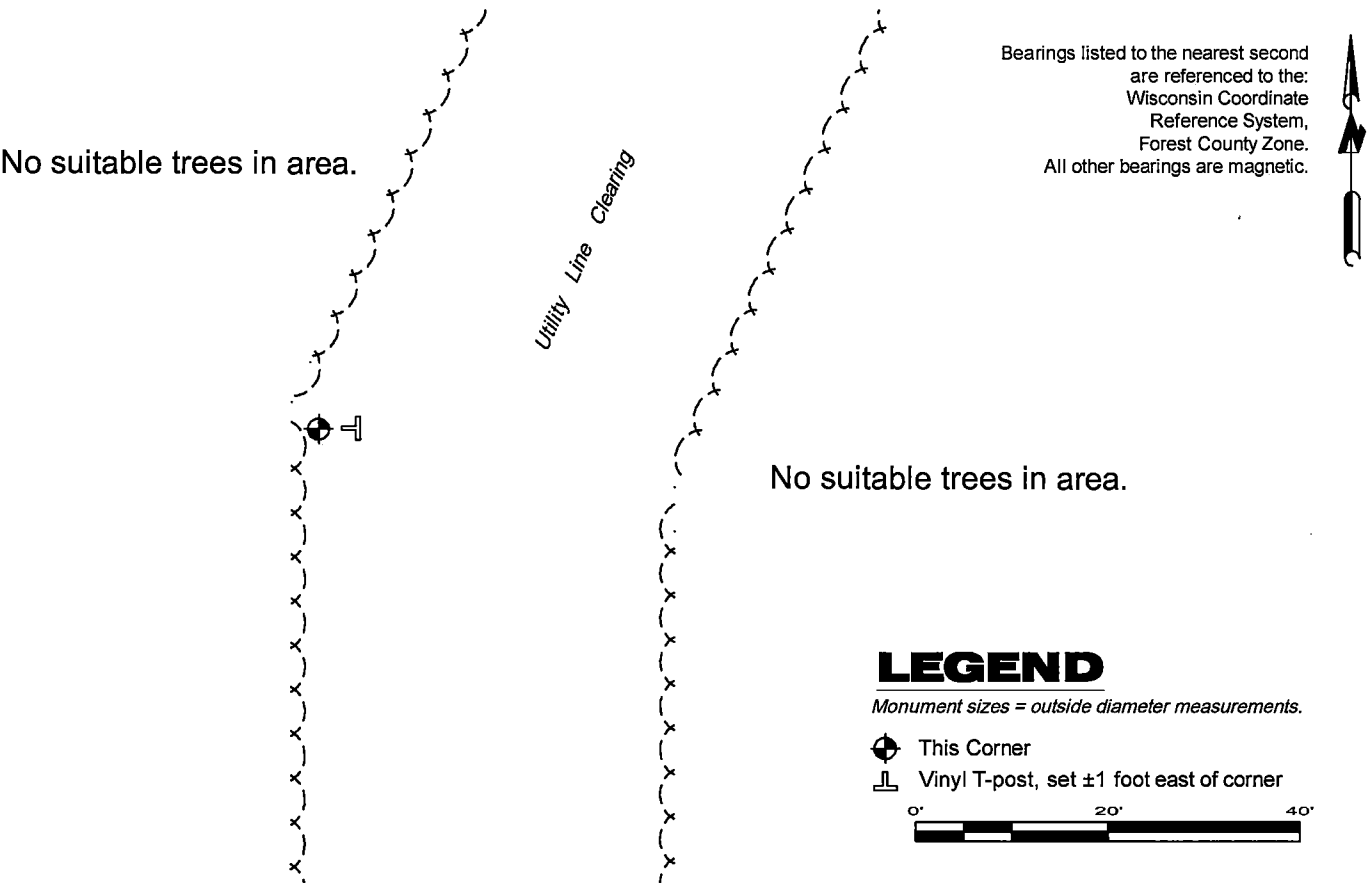
See previous Certified Land Corner Restoration N-9 - Surveyor 802 - Jean F. Resvick - November 4, 1963 - THENCE:

- September 1969 - Surveyor 802 - Jean F. Resvick - indicates this position as "B.L.M. - 1941 Dependent Resurvey" on county record map #401220-19690131.
- February 9, 2018 - Surveyor 2566 - David A. Konopacky - indicates this position as "GLO brass capped concrete monument in place" on Certified Survey Map 224767.

July 17, 2025 - I found a 5" diameter concrete monument, with a 2" diameter brass cap stamped to identify the corner location. The monument is at the west edge of a utility line clearing and extends ±4" above grade. This area is occupied with heavy wind fallen trees. All standing trees in the area are dead. I did not find any witnesses set by Veal or subsequent surveyors.

I established 0 new reference monuments as shown below.

A-E 7.08(3)(c)(d) Plan view of corner with references to at least 4 witness monuments.



A-E 7.08(3)(e) 1859 Surveyor set a post, 1963 Surveyor found 6" diameter concrete monument with a brass cap stamped to identify the corner location, 2018 Surveyor found the same. I found a 5" diameter concrete monument with a 2" diameter brass cap stamped to identify the corner location in 2025.

A-E 7.08(3)(f) I accept this monument in good faith as a FOUND PERPETUATED LOCATION of the corner.

A-E 7.08(3)(g)(h) This corner was previously determined through lost-corner-proportionate methods.

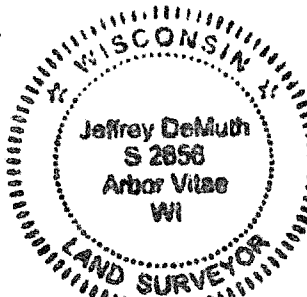
A-E 7.08(3)(i) I, Jeffrey L. DeMuth, Professional Land Surveyor No. S-2656, hereby certify that the corner location on this record was determined by me or under my direction and control, and that this U.S. Public Land Survey Monument Record is correct and complete to the best of my knowledge, and belief.

SIGNATURE

Jeffrey L. DeMuth

July 24, 2025

DATE



44012170000

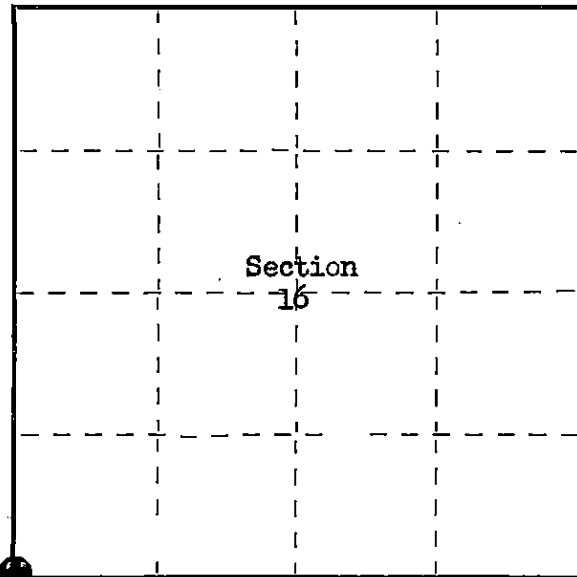
44012170000

N9

State of Wisconsin }
County of Forest } ss.

I, Jean F. Resvick, do hereby
certify that on the 31st day
of May, 1963, I found
evidence of the Section
corner of Sections 16, 17, 20 & 21
Township 40, North, Range
12 East, Fourth Principal Meridian,
as described hereon; and that from this evidence
I established a new ~~monument~~ and accessories
as described hereon to perpetuate the ~~original~~
location of this corner.

Resident witnesses:



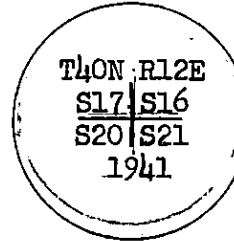
○ = Corner monument restored.

CERTIFIED LAND CORNER RESTORATION

Index No. N-9

History of original corner establishment:

Surveyed in 1859 by Wm. E. Daugherty. Dependent Resurvey in 1941 by Guy R. Veal.
Set concrete monument, 2 ft. long, 6 in. diam., with iron post, 22 in. long, 1 in.
diam., encased therein with brass cap marked:



From which: W. birch 7", bears, N62°E, 33½ lks.
W. birch 6", bears, S68°30'E, 51½ lks.
W. birch 8", bears, S50°W, 30 lks.
W. birch 6", bears, N56°W, 36 lks.

Description of corner evidence found:

Monument as described:

W. birch stump, cut by Power Co., scribe showing, N69°30'E, 21.90 ft.
W. birch stump, cut by Power Co., scribe showing, S69°30'E, 35.50 ft.
W. birch, 12", S50°W, 20.25 ft.
W. birch, 8", N56°W, 23.35 ft.

Description of ~~monument~~ and accessories I established to perpetuate the ~~original~~ location of this corner.
Blazed and scribed the following new bearing trees:

Balsam 5", S57°E, 54.40 ft. (82.42 lks.)
Spruce 5", S7°W, 30.30 ft. (45.91 lks.)
Spruce 9", N72°30'W, 24.20 ft. (36.67 lks.)
W. birch 7", N28°E, 40.75 ft. (61.74 lks.)
Power pole number 4012-16-L1, S50°E, 28.85 ft. (43.71 lks.)

Dated at Rhineland, Wis., this 16th day of August, 1963.

Signature Jean F. Resvick Title Cadastral Surveyor Registration No. S-802
(County Surveyor, Registered Land Surveyor, or other duly authorized official)

Office of Register of Deeds, County of Forest, I hereby certify that the within
instrument was filed in this office for record on the 4 day of November, 1963
at 9:00 o'clock A M.

Anna Peterson
(Register of Deeds)

87829

By _____ Deputy

44012170000