

U.S. PUBLIC LAND SURVEY MONUMENT RECORD

NO. 440 13 04 00 00  
E-13

HISTORY OF ORIGINAL CORNER ESTABLISHMENT:

1.) 1865 - WILLIAM E. DAUGHERTY ORIGINAL GOVERNMENT SURVEY. NORTH BETWEEN SECTIONS 9 AND 10, AT 80.00 CHAINS, SET SECTION CORNER POST TO SECTIONS 3, 4, 9, AND 10, FROM WHICH THE FOLLOWING BEAR:  
10" SPRUCE N33°E, 10 LINKS AND 8" SPRUCE S74°W, 18 LINKS,  
2.) 1991 - OCT. 31ST, W. COCHRANE FOUND NO EVIDENCE OF THE ORIGINAL CORNER. OLD HIGHWAY PLANS CALL FOR A WOOD POST AT THE INTERSECTION OF HWY "70" AND FOREST RD #2458. HE ACCEPTED THE INTERSECTION AS THE BEST AVAILABLE EVIDENCE. HE SET A RAILROAD SPIKE FLUSH WITH THE ROAD, SET A WITNESS MONUMENT TO THE SOUTH, AND BLAZED AND SCRIBED NEW BEARING TREES.

246174

FILED ON:  
07/17/2025 02:00 PM

CORTNEY BRITTEN CLEERMAN  
REGISTER OF DEEDS

FOREST COUNTY WI

PAGES: 1

13

THIS 26TH DAY OF JUNE, 2025.

*Tiffany N. Heisel*  
TIFFANY N. HEISEL  
PROFESSIONAL LAND SURVEYOR

**rasSmith**  
100 West Lawrence Street, Suite 412  
Appleton, WI 54911-5734  
(920) 731-3499  
rasmith.com

WITNESSES TO CORNER LOCATION:

NICHOLAS J. KREPLINE

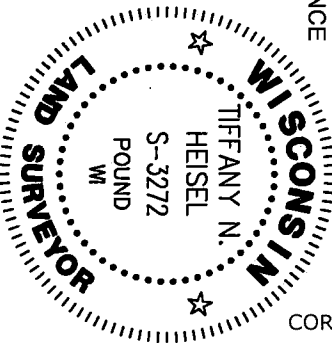
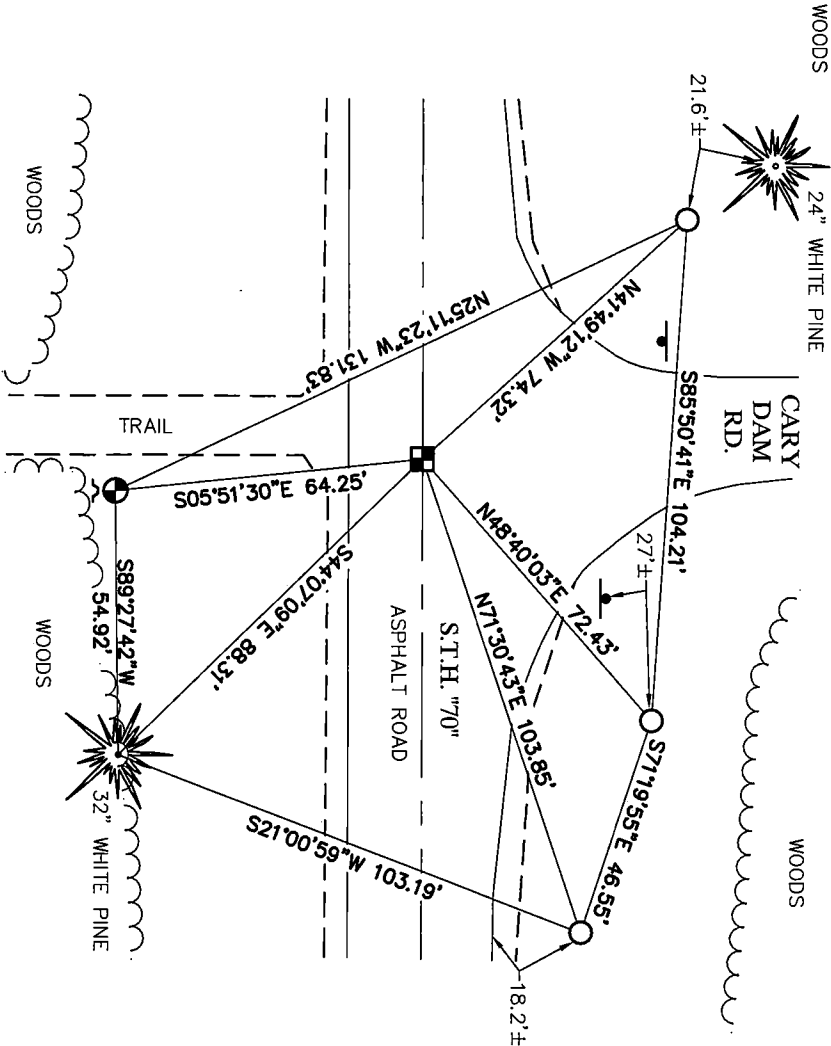
TIFFANY N. HEISEL

LEGEND

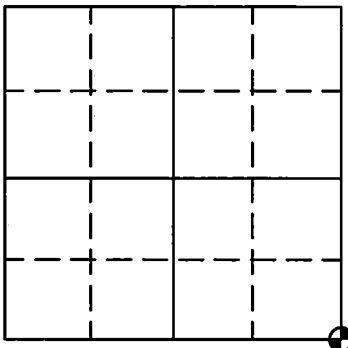
- RR SPIKE FOUND 0.5' BELOW GRADE
- ALUM WITNESS MONUMENT FOUND
- 1" IRON PIPE SET
- ROAD/STOP SIGN



DESCRIPTION OF CORNER EVIDENCE FOUND:  
ON JUNE 19, 2025 RASMITTH FOUND THE RAILROAD SPIKE 0.5' BELOW THE PAVEMENT SURFACE. THE REFERENCE MONUMENT AND ONE BEARING TREE WERE ALSO FOUND. THE RAILROAD SPIKE WAS ACCEPTED AS THE CORNER AND THREE ADDITIONAL WITNESSES WERE SET AND TIED AS SHOWN.



SECTION 9



☉ = CORNER LOCATION

T 40 N R 13 E

WISCONSIN

TOWN OF: ALVIN

COUNTY OF: FOREST

DRAFTED BY: TNH

4401304 0000

Stock No. 26273  
DOCUMENT NUMBER  
145352

## U.S. PUBLIC LAND SURVEY MONUMENT RECORD

Index No. E-13

State of Wisconsin }  
County of Forest } ss.

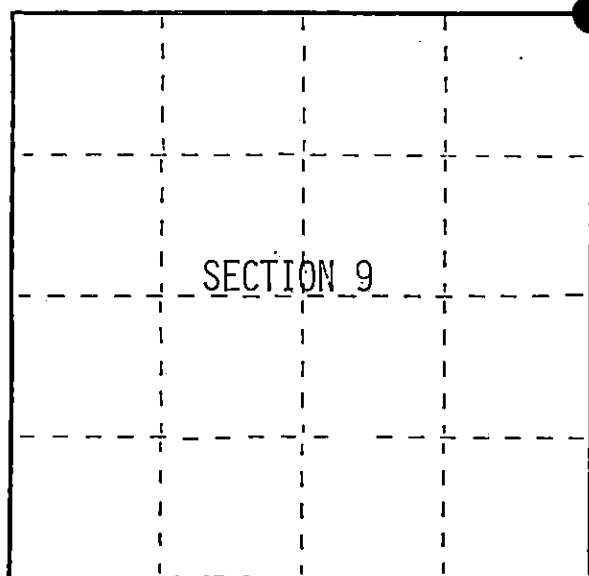
I, William B. Cochrane, do hereby  
certify that on the 31st day  
of October, 1991, I found  
evidence of the Northeast Section  
corner of Section 9  
Township 40, North, Range  
13 East, Fourth Principal Meridian,  
as described hereon; and that from this evidence  
I established a new monument and accessories  
as described hereon to perpetuate the original  
location of this corner.

Resident witnesses:

.....

.....

.....



○ = Corner monument restored.

## History of original corner establishment:

Original Government Survey in 1865 by William E. Daugherty. North between Sections 9 and 10, at 80.00 chains, set Section Corner Post to Sections 3, 4, 9 and 10, from which the following bear;

Spruce	10"	N33°E	10 lks.
Spruce	8"	S74°W	18 lks.

## Description of corner evidence found:

No original corner evidence was recovered.

Old Highway Plans call for a wood post at the intersection of Highway 70 and Forest Road #2458.

I accept the intersection as the best available evidence for restoring the corner position.

## Description of monument and accessories I established to perpetuate the original location of this corner.

At the intersection, set a railroad spike flush with the surface of Highway 70, from which the following new blazed and scribed bearing trees bear;

W. Pine	13"	N33°E	126.90 feet
W. Pine	15"	S47°E	89.63 feet
Reference Monument		S08°E	64.50 feet
W. Pine	13"	N46°W	110.85 feet

Dated at Hiles, Wis., this 19th day of February, 1992

Signature William B. Cochrane Title Land Surveyor Registration No. S-1107  
(County Surveyor, Registered Land Surveyor, or other duly authorized official)

Office of Register of Deeds, County of Forest, I hereby certify that the within  
instrument was filed in this office for record on the 31st day of August, 1992  
at 10:15 o'clock A M.

Paul Aschenbrenner  
(Register of Deeds)

By \_\_\_\_\_ Deputy

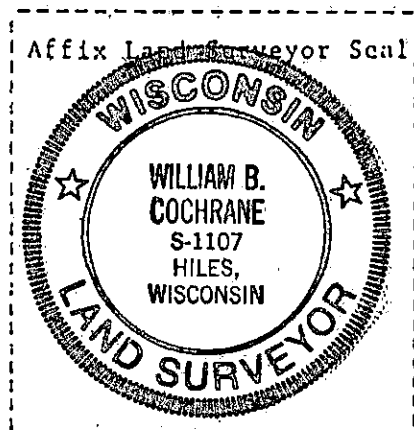
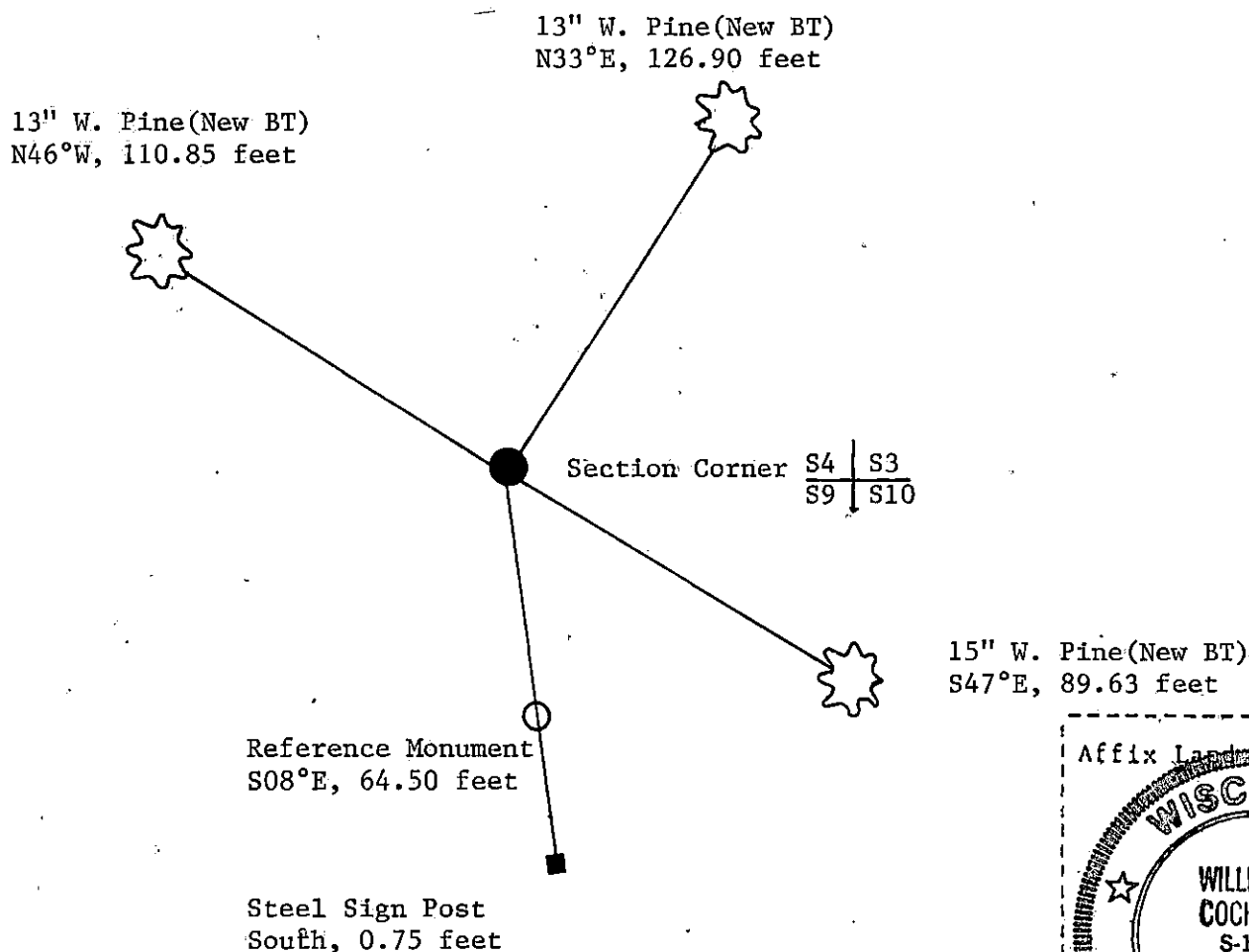
441013040000

(e) Describe any material discrepancy between the location of the corner as restored or reestablished and the location of that corner as previously restored or reestablished by distance and direction. Show the discrepancy on the plan view drawing under (d), above. Show the distances between the corner as previously restored or reestablished and (1) the corner as restored or reestablished, and (2) to at least 2 of the witness monuments shown on the drawing in (d), above.

(f) Was the corner restored through acceptance of (1) an obliterated evidence location, or, (2) a found perpetuated location?

Restored from accepted evidence.

(g&h) Was the corner reestablished through lost corner proportionate methods? If so, show the method, including the directions and distances to other public land survey corners used as evidence or used for proportioning in determining the corner location?



(f) I, William B. Cochrane  
(type or print name) certify that the corner location shown on this record was determined by me or under my direction and control and that this U.S. Public Land Survey Monument Record is correct and complete to the best of my knowledge and belief.

William B. Cochrane May 4, 1992  
Signature Date

Survey requested by: Pam Gordon May 4, 1992  
District Ranger Date