

FILED ON:
01/28/2025 02:33 PM
CORTNEY BRITTEN CLEEREMAN
REGISTER OF DEEDS
FOREST COUNTY WI
PAGES: 1
INDEX#:

FOREST COUNTY SURVEY MONUMENT RECORD

NOTE: This form is intended and designed to fulfill all requirements of Wisconsin Administrative Code, Chapter A-E 7.08 U.S. Public Land Survey Monument Record (3) (a-1)

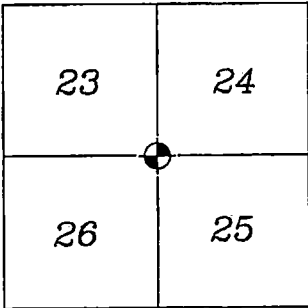
TYPE OF MONUMENT: RR SPIKE

WISCONSIN FOREST COUNTY
NORTHING: 699782.43'
EASTING: 857303.01'
DATUM: NAD83 (2011)
METHOD NETWORK RTK

FIELD WORK DATE: 10/16/2024
COMPANY: PAYNE AND DOLAN

SECTION CORNER COMMON
TO SECTIONS 23, 24, 25,
26
TOWNSHIP: 40N
RANGE: 13E
TOWN OF ALVIN

FOUND: ☒
SET: ☐
RESET: ☐
RETIED: ☐



CORNER LOCATION
INDICATED BY:

BASIS FOR MONUMENT LOCATION:
(DESCRIBE METHOD OF SURVEY AND CORNER AUTHENTICATION)

HISTORY:
In 1865, William E. Daugherty set section corner post.

In 1991, William B. Cochrane, using a survey map from 1940,
re-established the corner. He set a RR Spike flush with the surface of
STH 55, set bearing trees, and set reference monument and steel sign
post.

FOUND RR SPIKE AT CORNER LOCATION AND 5 OF THE 5 TIES. REFERENCED
TIE SHEET FROM S-1107 DATED 12-17-92.

STH 55, REPAVED FALL 2024.
RR SPIKE REMAINS IN PLACE.
SET MAG SPIKE AT GRADE ON NEWLY PAVED ROAD DIRECTLY ABOVE THE RR
SPIKE, DERIVED FROM RTK COORDINATES.

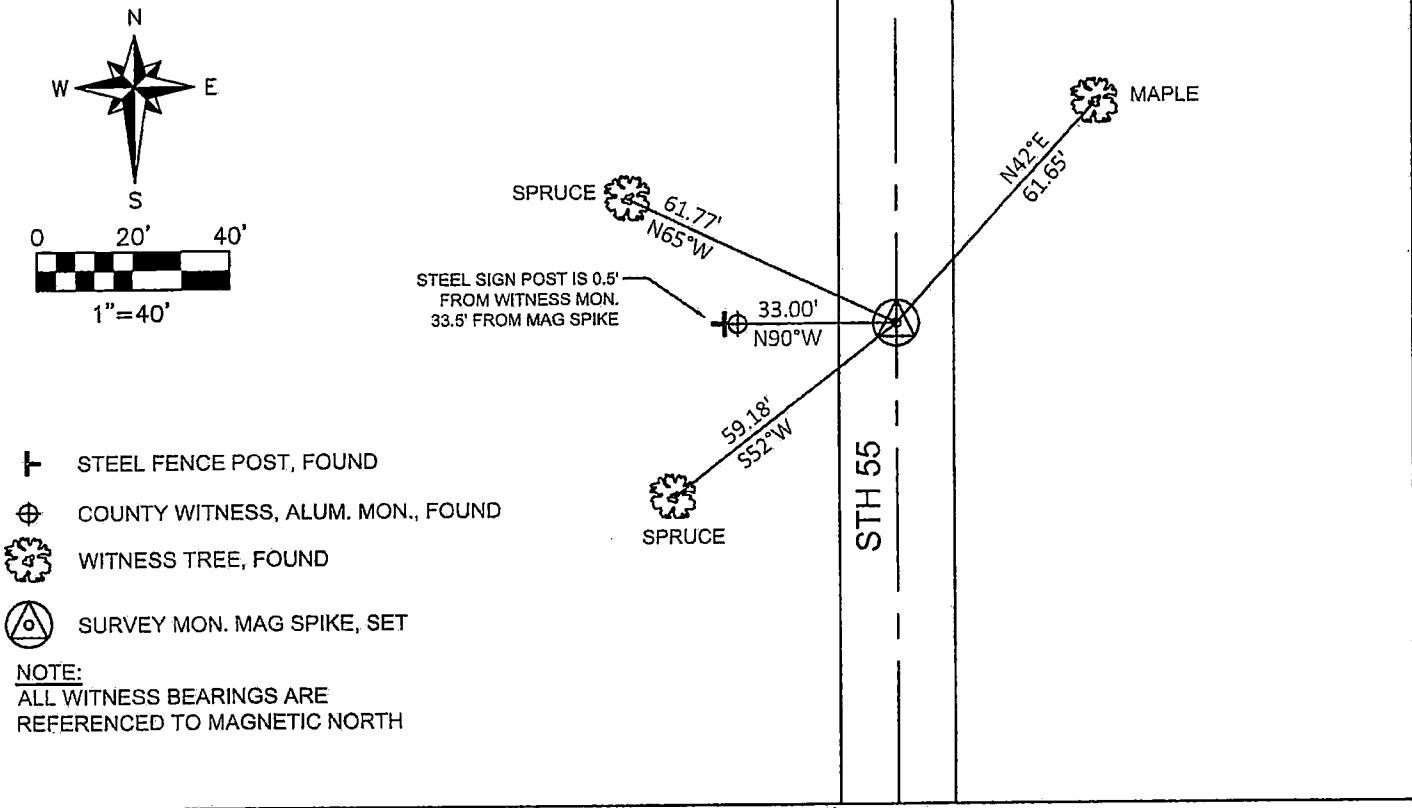


I accept this monument in good faith as a FOUND PERPETUATED LOCATION of the corner and was not
determined through lost-corner-proportionate methods.

I, Rebecca A. DesRochers, Professional Land Surveyor No. 3170, hereby cerify that the corner location
on this record was determined by me or under my direction and control, and that this U.S. Public
Land Survey Monument Record is correct and complete to best of my knowledge, and belief.

Rebecca A. DesRochers 01/21/2025
PROFESSIONAL LAND SURVEYOR DATED

TIE SKETCH



Stock No. 26273

146891

U.S. PUBLIC LAND SURVEY MONUMENT RECORD

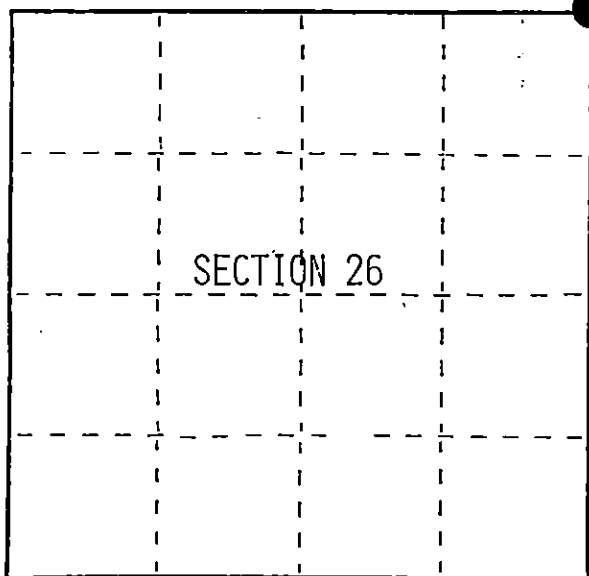
Index No. R-21

State of Wisconsin }
County of Forest } ss.

I, William B. Cochran, do hereby
certify that on the 16th day
of September, 1991, I found
evidence of the Northeast Section
corner of Section 26
Township 40, North, Range
13 East, Fourth Principal Meridian,
as described hereon; and that from this evidence
I established a new monument and accessories
as described hereon to perpetuate the original
location of this corner.

Resident witnesses:

.....
.....
.....



○ = Corner monument restored.

History of original corner establishment:
Original Government Survey in 1865 by William E. Daugherty. North between
Sections 25 and 26, at 80.00 chains, set Section Corner Post, from which the
following bear;

Sugar	7"	N70°W	28 lks.
Birch	18"	N06°E	49 lks.

Description of corner evidence found:

Found a 1940 survey map, which shows the corner position to be in the center-line
of State Hwy 55.

I re-established the corner position from the East Quarter Corner of Section 26
using proportionate distance from the 1940 survey map and the center-line of
Hwy 55.

No original corner evidence was recovered.

Description of monument and accessories I established to perpetuate the original location of this corner.

At the corner position, set a railroad spike flush with the surface of Hwy 55,
stamped; 23, 24, 25, 26. From which the following new blazed and scribed bearing
trees bear;

Maple	6"	N42°E	61.65 feet
Spruce	9"	S52°W	59.18 feet
Spruce	11"	N56°W	61.77 feet
Set- Steel Sign Post		West	33.50 feet
Reference Monument 2½"x36"		West	33.00 feet

Dated at Hiles, Wis., this 19th day of February, 1992

Signature William B. Cochran Title Land Surveyor Registration No. S-1107
(County Surveyor, Registered Land Surveyor, or other duly authorized official)

Office of Register of Deeds, County of Forest, I hereby certify that the within
instrument was filed in this office for record on the 10th day of March, 1993
at 10:45 o'clock A. M.

Paul Scheffner
(Register of Deeds)

By.....Deputy

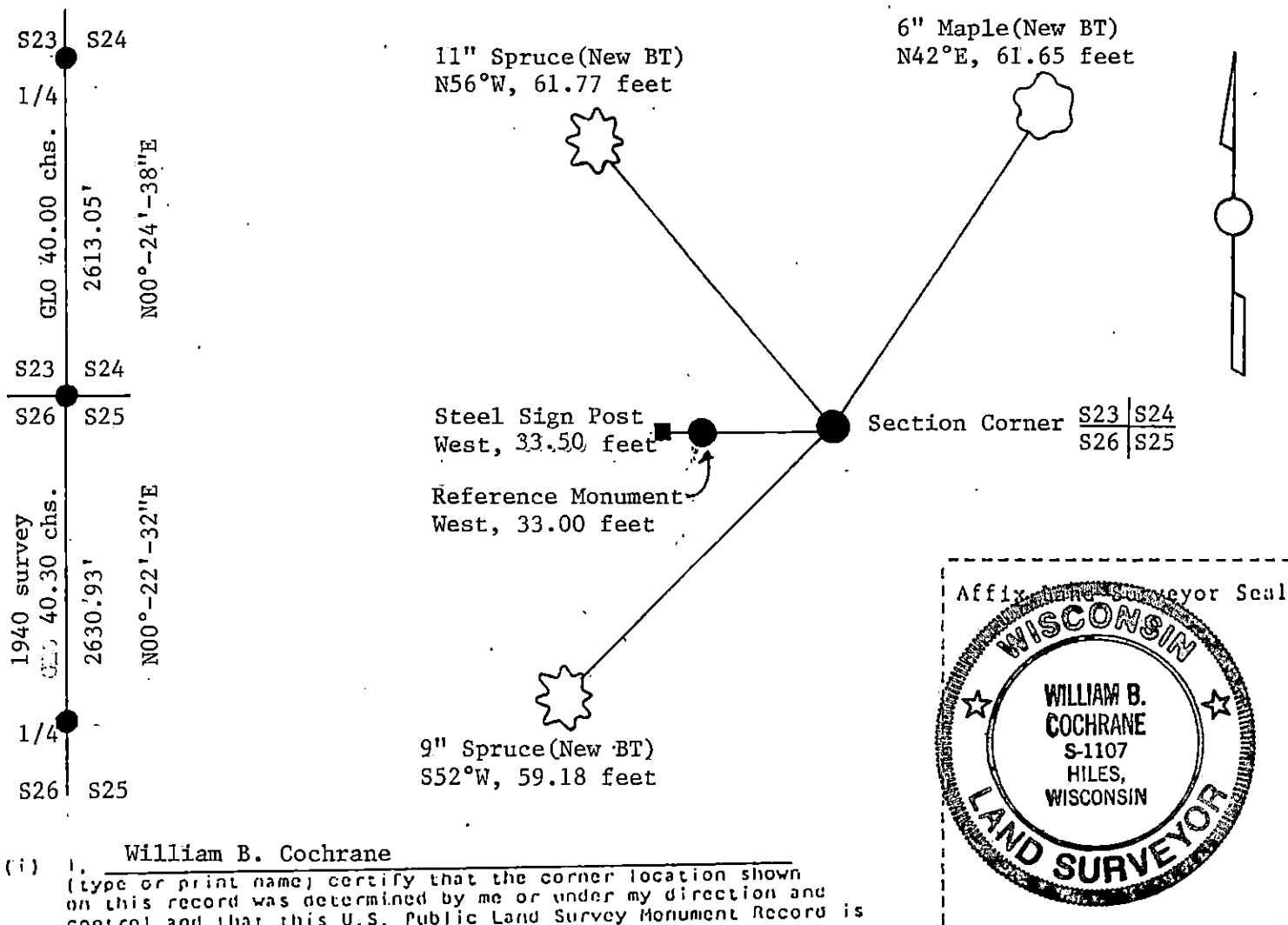
44013230000

- (e) Describe any material discrepancy between the location of the corner as restored or reestablished and the location of that corner as previously restored or reestablished by distance and direction. Show the discrepancy on the plan view drawing under (d), above. Show the distances between the corner as previously restored or reestablished and (1) the corner as restored or reestablished, and (2) to at least 2 of the witness monuments shown on the drawing in (d), above.

See drawing below.

- (f) Was the corner restored through acceptance of (1) an obliterated evidence location, or, (2) a found perpetuated location?

- (g&h) Was the corner reestablished through lost corner proportionate methods? If so, show the method, including the directions and distances to other public land survey corners used as evidence or used for proportioning in determining the corner location?
Re-established through lost corner proportionate methods.



- (i) I, William B. Cochrane
(type or print name) certify that the corner location shown on this record was determined by me or under my direction and control and that this U.S. Public Land Survey Monument Record is correct and complete to the best of my knowledge and belief.

William B. Cochrane May 5, 1992
Signature Date

Survey requested by: Jim Gardner 12/17/92
District Ranger Date