

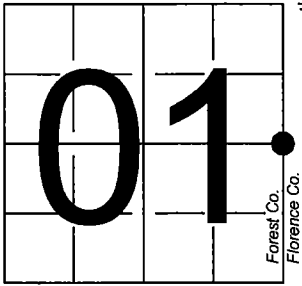
U. S. PUBLIC LAND SURVEY MONUMENT RECORD

NOTE: This form is intended and designed to fulfill all requirements of Wisconsin Administrative Code, Chapter A-E 7.08 U.S. Public Land Survey Monument Record (3) (a-i)

T.41N.
T.40N.

A-E 7.08(3)(a) Identity of corner:
East 1/4 Corner Section 01,
Township 40 North, Range 14 East
of the Fourth Principal Meridian,
Town of Alvin, Forest County,
Wisconsin

WISCRS - FOREST COUNTY
N: 718,305.260 USft (XXX,XXX.XXX)
E: 894,522.187 USft (XXX,XXX.XXX)
Datum: NAD83 (2011)
GNSS Method RTK
GNSS Control WISCRS VRS



R.14E.
R.15E.

The coordinate value shown has been verified by the average of two or more GPS observations at a markedly different time. Coordinates shown in parenthesis are previously published values.

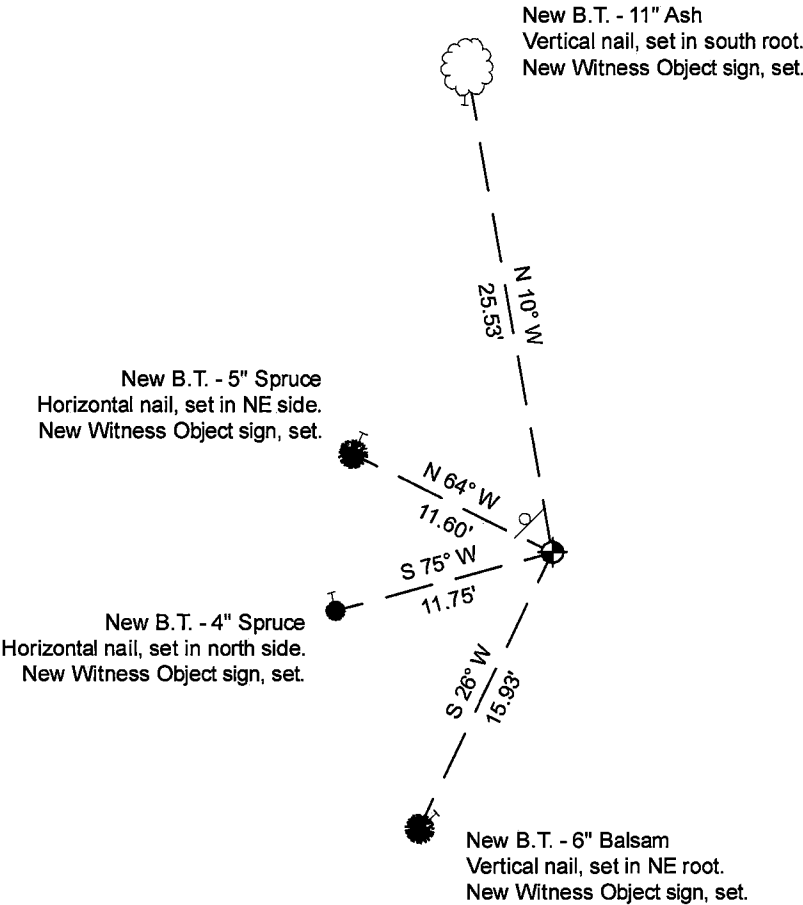
A-E 7.08(3)(b)

Original Surveyor: Artemas Curtis - June 1858
Cedar 12 - S 70° W, 42 Links, Cedar 14 - N 44° E, 57 Links

See previous U.S. Public Land Survey Monument Record - C-25 - October 9, 1986 - Surveyor 1107 - William B. Cochrane. THENCE:

December 16, 2024 - In performing the 2024 - Forest County - "PLSS Corner Remonumentation and GPS Services" project, I found a 4" diameter concrete monument with a 2.5" diameter brass cap stamped to identify the corner. The monument is on highland and extends ±24" above grade. I did not find any of Cochrane's bearing trees. I established 4 new reference monuments as shown below.

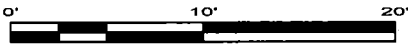
A-E 7.08(3)(c)(d) Plan view of corner with references to at least 4 witness monuments.



Bearings listed to the nearest second are referenced to the: Wisconsin County Coordinate Reference System, FOREST County Zone. All other bearings are magnetic.

LEGEND

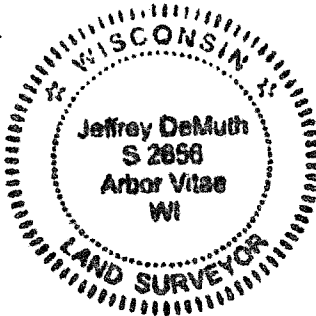
- Monument sizes = outside diameter measurements.
- This Corner
- Steel sign post, found ±1 foot NW of Corner
- Galvanized nail, set or nail found as shown



A-E 7.08(3)(e) 1858 Surveyor set a post, 1986 Surveyor found a concrete monument 3 feet long, 4 inches in dia., with a brass cap stamped to identify corner. In 2024, I found a 4" diameter concrete monument with a 2.5" diameter brass cap stamped to identify the corner.

A-E 7.08(3)(f) I accept this monument in good faith as a FOUND PERPETUATED LOCATION of the corner.
A-E 7.08(3)(g)(h) This corner was not determined through lost-corner-proportionate methods.

A-E 7.08(3)(i) I, Jeffrey L. DeMuth, Professional Land Surveyor No. S-2656, hereby certify that the corner location on this record was determined by me or under my direction and control, and that this U.S. Public Land Survey Monument Record is correct and complete to the best of my knowledge, and belief.



SIGNATURE _____ DATE December 23, 2024

U.S. PUBLIC LAND SURVEY MONUMENT RECORD

Index No. C-25

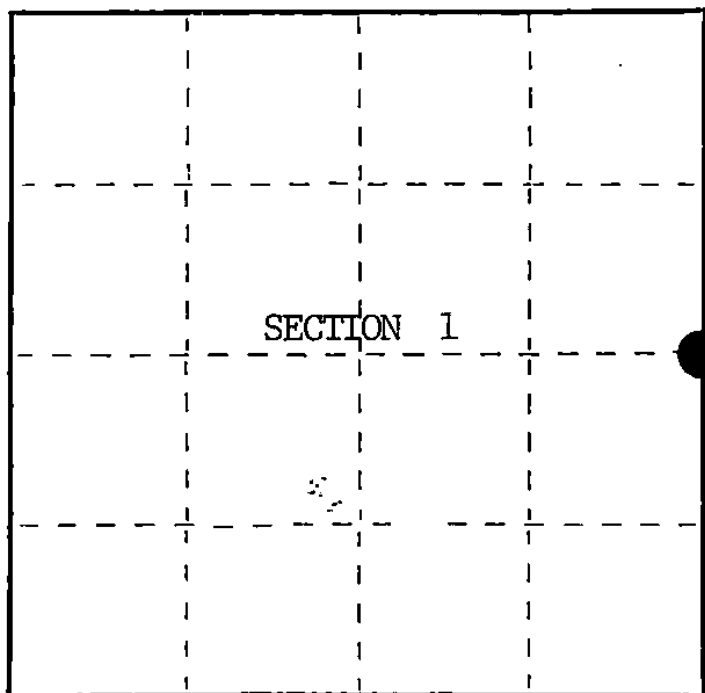
State of Wisconsin }
County of Forest } ss.

I William B. Cochran, do hereby
certify that on the 6th day
of December, 1984, I found
evidence of the East Quarter
corner of Section 1
Township 40, North, Range
14 East, Fourth Principal Meridian,
as described hereon; and that from this evidence
I established a new monument and accessories
as described hereon to perpetuate the original
location of this corner.

Resident witnesses:

David Brownell

Tony Tillman



○ = Corner monument restored.

History of original corner establishment:

Original Government Survey in 1858 by Artemas Curtis. Dependent Resurvey in 1945 by Hugh B. Crawford. North between Sections 1 and 6, at 39.97 chains, the point for corner is determined from the remains of original bearing trees. At the corner point, set a concrete monument, 3 feet long, 4 inches dia., 28 inches in the ground, with an iron post in center, and a brass cap mkd; 1/4, S1, S6, 1945. From which the following bear;

Spruce	6"	N42°E	12½ lks. (8.25 feet)
Spruce	4"	S79°W	32 lks. (21.12 feet)

Description of corner evidence found:

Found monument as described and in place, from which the following bears;

Spruce	10"	N42°E	8.25 feet
--------	-----	-------	-----------

Description of monument and accessories I established to perpetuate the original location of this corner.

Blazed and scribed the following new bearing trees;

Spruce	7"	S22°W	30.42 feet
Spruce	4"	N65°W	22.18 feet
Steel Sign Post		NW	0.50 feet

Dated at Hiles, Wis., this 9th day of October, 1986

Signature William B. Cochran Title Land Surveyor Registration No. S-1107
(County Surveyor, Registered Land Surveyor, or other duly authorized official)

Office of Register of Deeds, County of Forest, I hereby certify that the within
instrument was filed in this office for record on the 11th day of March, 1987
at 3:30 o'clock P. M.

Paul Aschenbrenner
(Register of Deeds)

By _____ Deputy

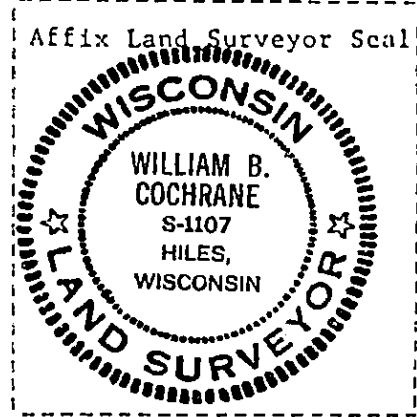
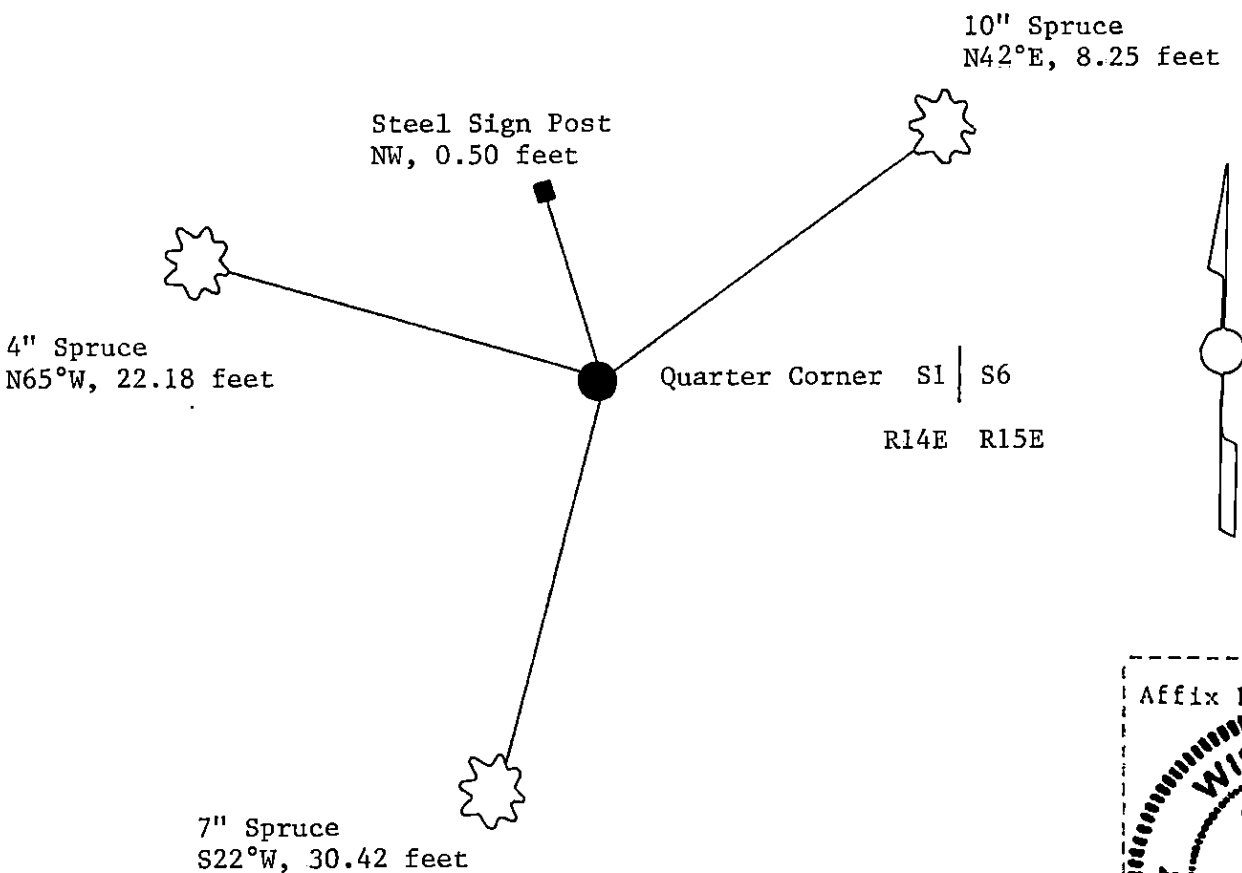
(e) Describe any material discrepancy between the location of the corner as restored or reestablished and the location of that corner as previously restored or reestablished by distance and direction. Show the discrepancy on the plan view drawing under (d), above. Show the distances between the corner as previously restored or reestablished and (1) the corner as restored or reestablished, and (2) to at least 2 of the witness monuments shown on the drawing in (d), above.

See drawing below.

(f) Was the corner restored through acceptance of (1) an obliterated evidence location, or, (2) a found perpetuated location?

Restored through acceptance of a found perpetuated location.

(g&h) Was the corner reestablished through lost corner proportionate methods? If so, show the method, including the directions and distances to other public land survey corners used as evidence or used for proportioning in determining the corner location?



(i) I, William B. Cochrane
(type or print name) certify that the corner location shown on this record was determined by me or under my direction and control and that this U.S. Public Land Survey Monument Record is correct and complete to the best of my knowledge and belief.

William B. Cochrane October 14, 1986
Signature Date

Certificate ready for filing.

Edward [Signature] 3-9-87
District Ranger Date