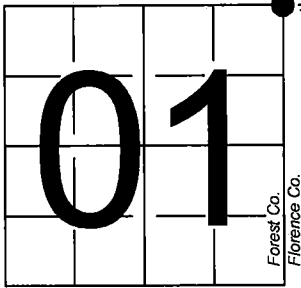


U. S. PUBLIC LAND SURVEY MONUMENT RECORD

NOTE: This form is intended and designed to fulfill all requirements of Wisconsin Administrative Code, Chapter A-E 7.08 U.S. Public Land Survey Monument Record (3) (a-i)

A-E 7.08(3)(a) Identity of corner:
Northeast Corner Section 01, Closing Corner
Township 40 North, Range 14 East
of the Fourth Principal Meridian,
Town of Alvin, Forest County,
Wisconsin

WISCRS - FOREST COUNTY
N: 720,847.558 USft (XXX,XXX.XXX)
E: 894,539.153 USft (XXX,XXX.XXX)
Datum: NAD83 (2011)
GNSS Method RTK
GNSS Control WISCRS VRS



T.41N.
T.40N.
Forest Co.
Florence Co.
R.14E.
R.15E.

The coordinate value shown has been verified by the average of two or more GPS observations at a markedly different time. Coordinates shown in parenthesis are previously published values.

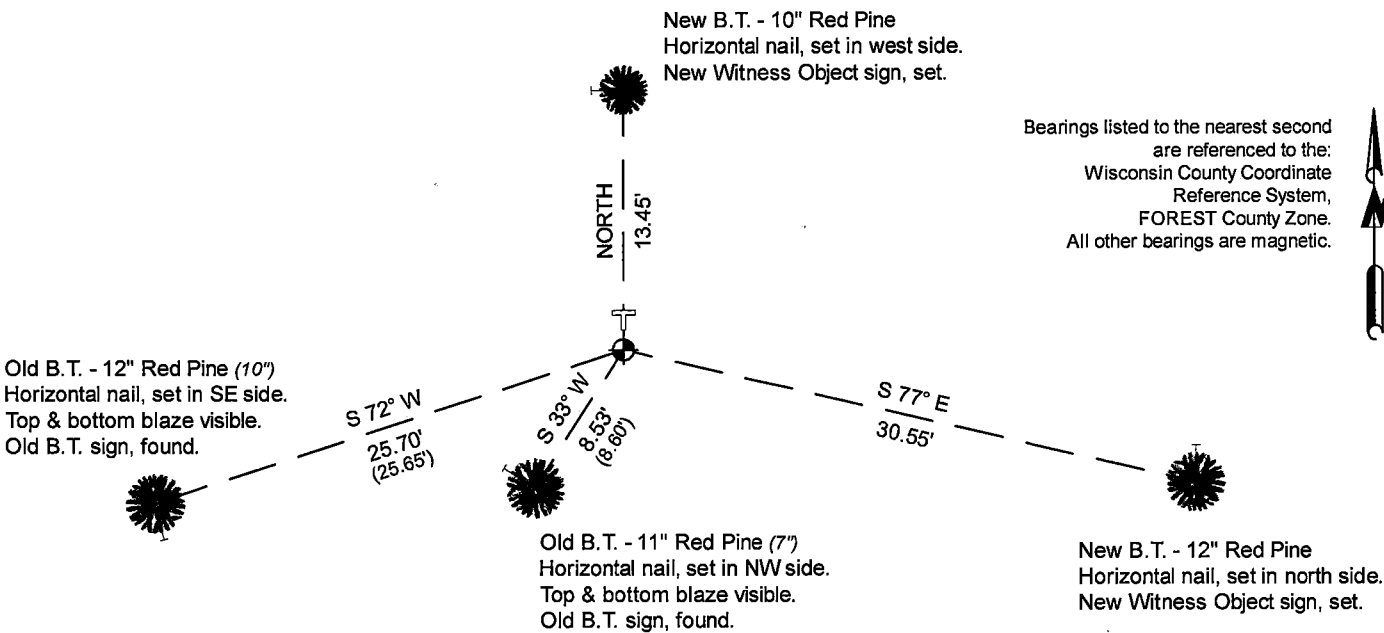
A-E 7.08(3)(b)

Original Surveyor: Artemas Curtis - June 1858
Cedar 12 - S 42° W, 25 Links, Cedar 14 - S 60° E, 34 Links

See previous U.S. Public Land Survey Monument Record - A-25 - October 8, 1986 - Surveyor 1107 - William B. Cochrane. THENCE:

December 16, 2024 - In performing the 2024 - Forest County - "PLSS Corner Remonumentation and GPS Services" project, I found a 6" diameter concrete monument with a 2.5" diameter brass cap stamped to identify the corner. The monument is on on top of a small hill, in a stand of Red Pine trees, and extends ±3" above grade. I also found 2 of Cochrane's bearing trees alive and in good condition. I established 2 new reference monuments as shown below.

A-E 7.08(3)(c)(d) Plan view of corner with references to at least 4 witness monuments.

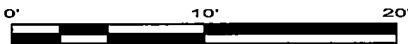


Bearings listed to the nearest second are referenced to the:
Wisconsin County Coordinate Reference System,
FOREST County Zone.
All other bearings are magnetic.

LEGEND

Monument sizes = outside diameter measurements.

- This Corner
- Vinyl T-post, set ±1 foot north of corner
- Galvanized nail, set or nail found as shown



A-E 7.08(3)(e) 1858 Surveyor set a post, 1986 Surveyor found a concrete monument 2 feet long, 6 inches in dia., with a brass cap stamped to identify corner. In 2024, I found a 6" diameter concrete monument with a 2.5" diameter brass cap stamped to identify the corner.

A-E 7.08(3)(f) I accept this monument in good faith as a FOUND PERPETUATED LOCATION of the corner.
A-E 7.08(3)(g)(h) This corner was not determined through lost-corner-proportionate methods.

A-E 7.08(3)(i) I, Jeffrey L. DeMuth, Professional Land Surveyor No. S-2656, hereby certify that the corner location on this record was determined by me or under my direction and control, and that this U.S. Public Land Survey Monument Record is correct and complete to the best of my knowledge, and belief.



SIGNATURE

December 23, 2024

DATE

44014014000

44014014000

A25

CERTIFIED LAND CORNER RESTORATION

State of Wisconsin

County of Forest

} ss.

I, Jean F. Resvick, do hereby certify that on the 16th day of November, 1966, I found evidence of the Northeast section corner of Section 1 Township 40 North, Range 14 East, Fourth Principal Meridian, as described hereon; and that from this evidence I established a new monument and accessories as described hereon to perpetuate the original location of this corner:

Description of original monument and accessories and subsequent restorations:

Original survey in 1858.

Dependent resurvey in 1944, 1945 and 1950 by Hugh B. Crawford.

Set a concrete monument, 24 ins. long, 6 ins. diam., 18 ins. in the ground, with an iron post, 23 ins. long, 1 in. diam., embedded in center, with brass cap marked:

T41N R15E
S31
S1 S6
R14E R15E
T40N
CC
1945

from which the following bearing trees bear:

Jack pine 2, S58°30'E, 62½ lks.

Poplar 10, S72°15'W, 155 lks.

Standard corner section 32 and 32,

T41N, R15E, bears N89°49'E, 44.73 chs.

Description of corner evidence found:

6 inch concrete monument with brass cap marked as described above.

Jack pine 8", S58°30'E, 41.25 ft.

Poplar stump scribed, S72°15'W, 102.3 ft.

Description of ~~monument and~~ accessories I established to perpetuate the ~~original~~ location of this corner:

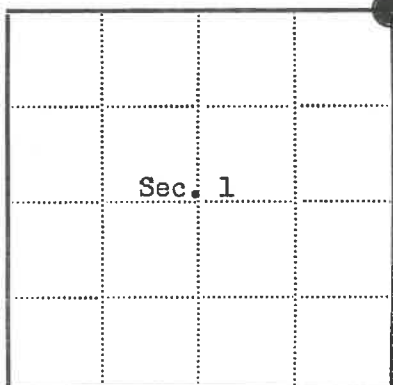
Blazed and scribed the following new bearing trees:

Red pine 5 ins., S33°W, 8.60 ft. or 13.03 lks.

Red pine 6 ins., S72°30'W, 25.65 ft. or 38.86 lks.



440/40/4000



● = Corner monument restored

□ =

Resident witnesses.....

Dated at Rhinelanders, Wisconsin, this 21st day of March, 1967.Signature Jean F. Resvick Title Cadastral Surveyor
(County Surveyor, Registered Land Surveyor, or other duly authorized official)Surveyors Registration No. S-802 DOC. NO. 94236Office of Register of Deeds County of ForestI hereby certify that the within instrument was filed in this office for record on the 27th day of February, 1968, and was filed in Book No. I Page No. 1 of County Records.Signature Eugene Stetson Title Register of DeedsTownship 40 North, Range 14 East, Section 1, Index No. A-25, Page No. 1

A 25

Stock No. 26273

DOCUMENT NUMBER 132434

U.S. PUBLIC LAND SURVEY MONUMENT RECORD

Index No. A-25

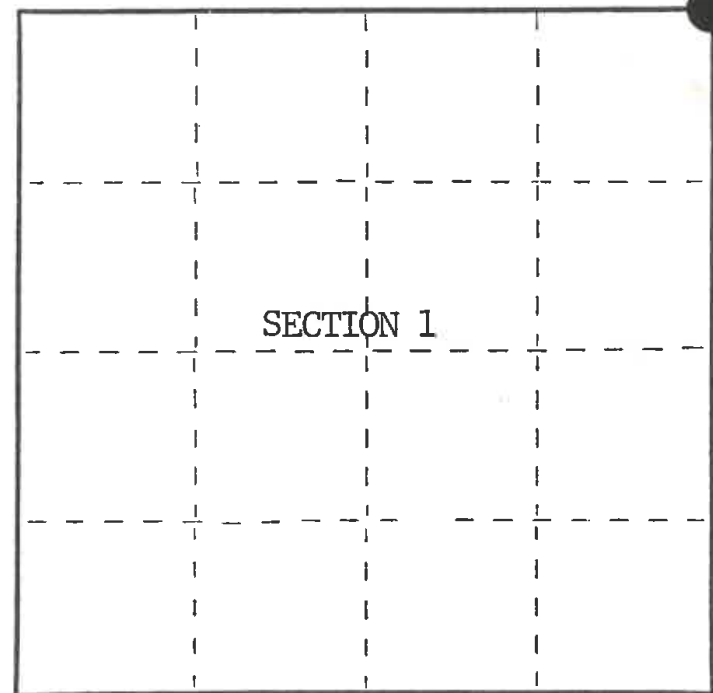
State of Wisconsin }
 County of Forest } ss.

I William B. Cochran, do hereby
 certify that on the 29th day
 of July, 1986 I found
 evidence of the Closing Northeast Section
 corner of Section 1
 Township 40, North, Range
 14 East, Fourth Principal Meridian,
 as described hereon; and that from this evidence
 I established a new monument and accessories
 as described hereon to perpetuate the original
 location of this corner.

Resident witnesses:

David Brownell

Tony Tillman



○ = Corner monument restored.

History of original corner establishment:

Original Government Survey in 1858 by Artemas Curtis. Dependent Resurvey in 1945 by
 Hugh B. Crawford. North between Sections 1 and 6, 38.55 chains, intersect Fourth
 Standard Paralell North. Set a concrete monument, 2 feet long, 6 inches dia., 18 inches
 in the ground, with an iron post in center, and a brass cap mkd; T41N, R15E, S31, S1, S6,
 R14E, R15E, T40N, CC, 1945. From which the following bear;

J. Pine	2"	S58°30'E	62½ lks. (41.25 feet)
Poplar	10"	S72°15'W	155 lks. (102.30 feet)

In 1966, Jean Resvick, a Land Surveyor with the U.S. Forest Service, blazed and scribed the
 following new bearing trees;
 Description of corner evidence found:

R. Pine	5"	S33°W	8.60 feet
R. Pine	6"	S72°W	25.65 feet
4"x4" Wood Sign Post	SW		2.00 feet

Found monument as described and in place, from which the following bear;

J. Pine	10"	S58°30'E	41.25 feet
R. Pine	7"	S33°00'W	8.60 feet
R. Pine	10"	S72°00'W	25.65 feet
Wood Sign Post	SW		2.00 feet

Description of monument and accessories I established to perpetuate the original location of this corner.

None

Dated at Hiles, Wis., this 8th day of October, 1986

Signature William B. Cochran Title Land Surveyor Registration No. S-1107
 (County Surveyor, Registered Land Surveyor, or other duly authorized official)

Office of Register of Deeds, County of Forest, I hereby certify that the within
 instrument was filed in this office for record on the 11th day of March, 19 87
 at 3:30 o'clock P. M.

Paul Aschenbrenner
 (Register of Deeds)

By _____ Deputy

44014014000

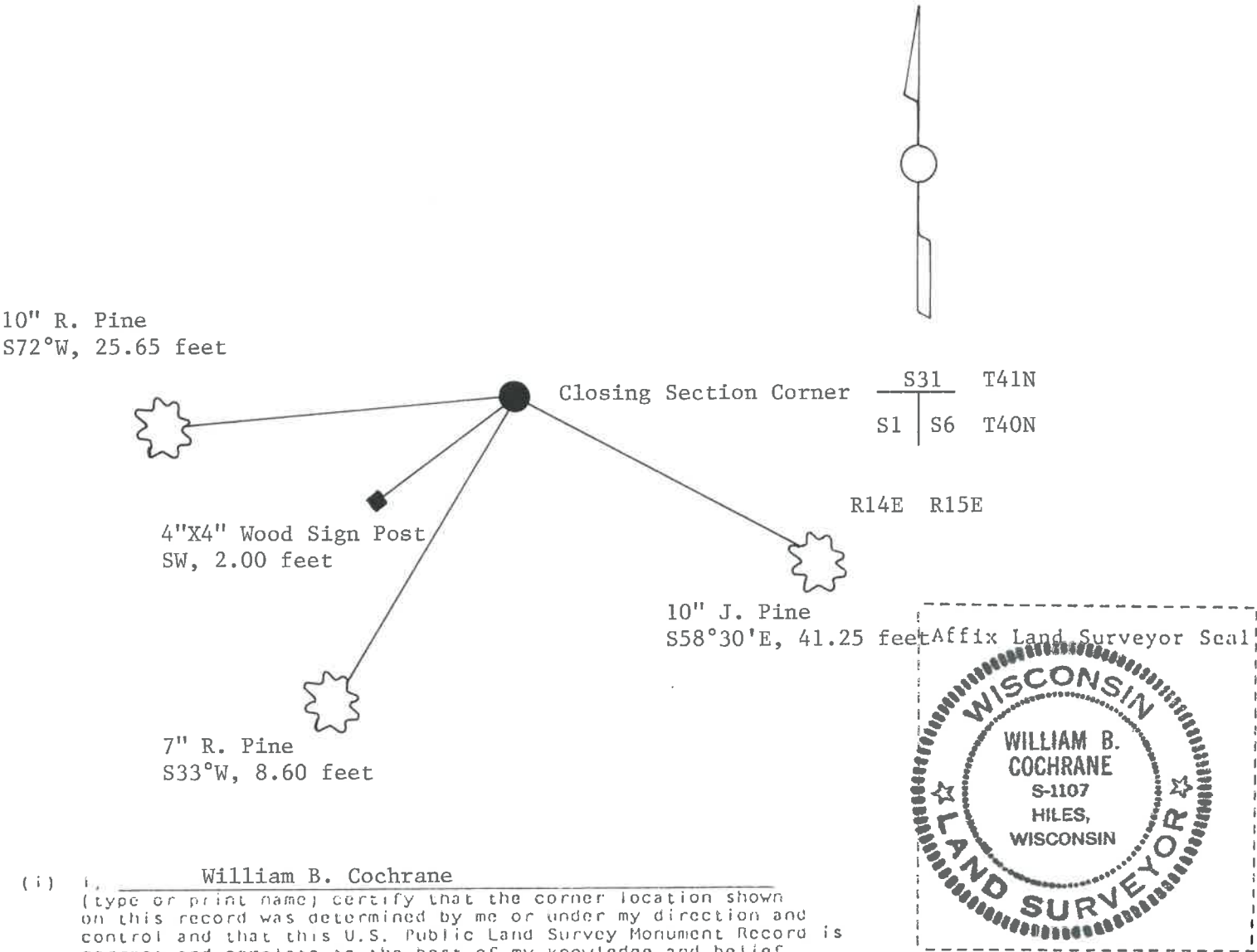
(e) Describe any material discrepancy between the location of the corner as restored or reestablished and the location of that corner as previously restored or reestablished by distance and direction. Show the discrepancy on the plan view drawing under (d), above. Show the distances between the corner as previously restored or reestablished and (1) the corner as restored or reestablished, and (2) to at least 2 of the witness monuments shown on the drawing in (d), above.

See drawing below.

(f) Was the corner restored through acceptance of (1) an obliterated evidence location, or, (2) a found perpetuated location?

Restored through acceptance of a found perpetuated location.

(g&h) Was the corner reestablished through lost corner proportionate methods? If so, show the method, including the directions and distances to other public land survey corners used as evidence or used for proportioning in determining the corner location?



(i) I, William B. Cochrane
(type or print name) certify that the corner location shown on this record was determined by me or under my direction and control and that this U.S. Public Land Survey Monument Record is correct and complete to the best of my knowledge and belief.

William B. Cochrane October 14, 1986
Signature Date

Certificate ready for filing: [Signature] 3-9-87
District Ranger Date

U.S. PUBLIC LAND SURVEY MONUMENT RECORD

Index No. A-1

State of Wisconsin }
County of Florence } ss.

I William B. Cochrane, do hereby
certify that on the 29th day
of July, 19 86, I found
evidence of the Closing Northwest Section
corner of Section 6
Township 40 North, Range
15 East, Fourth Principal Meridian,
as described hereon; and that from this evidence
I established a new monument and accessories
as described hereon to perpetuate the original
location of this corner.

Resident witnesses:

David Brownell

Tony Tillman

History of original corner establishment:

Original Government Survey in 1858 by Artemas Curtis. Dependent Resurvey in 1945 by
Hugh B. Crawford. North between Sections 1 and 6, 38.55 chains, intersect Fourth
Standard Paralell North. Set a concrete monument, 2 feet long, 6 inches dia., 18 inches
in the ground, with an iron post in center, and a brass cap mkd; T41N R15E, S31, S1, S6,
R14E, R15E, T40N, CC, 1945. From which the following bear;

J. Pine	2"	S58°30'E	62½ lks. (41.25 feet)
Poplar	10"	S72°15'W	155 lks. (102.30 feet)

In 1966, Jean Resvick, a Land Surveyor with the U.S. Forest Service, blazed and scribed
the following new bearing trees;

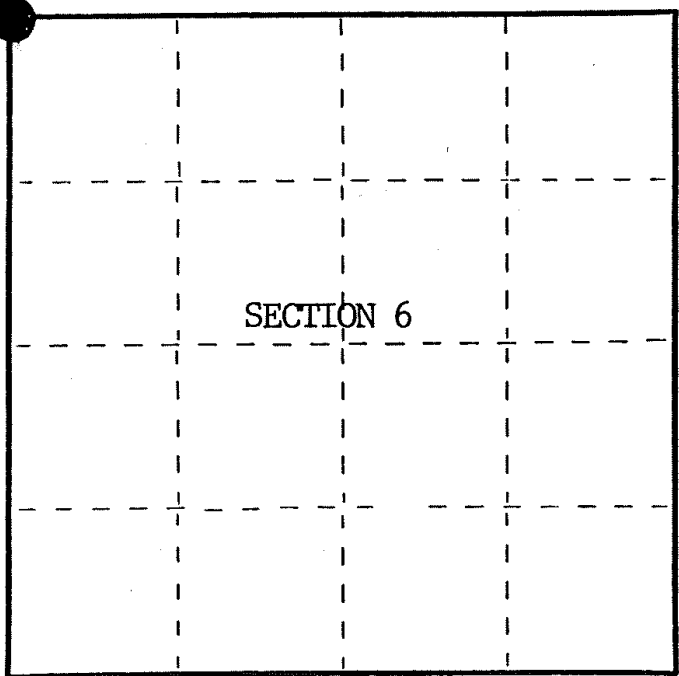
Description of corner evidence found:	R. Pine	5"	S33°W	8.60 feet
	R. Pine	6"	S72°W	25.65 feet
	4"x4" Wood Sign Post	SW		2.00 feet

Found monument as described and in place, from which the following bear;

J. Pine	10"	S58°30'E	41.25 feet
R. Pine	7"	S33°00'W	8.60 feet
R. Pine	10"	S72°00'W	25.65 feet
4"x4" Wood Sign Post	SW		2.00 feet

Description of monument and accessories I established to perpetuate the original location of this corner.

None



○ = Corner monument restored.

Dated at Hiles, Wis., this 8th day of October, 19 86

Signature William B. Cochrane Title Land Surveyor Registration No. S-1107
(County Surveyor, Registered Land Surveyor, or other duly authorized official)

Office of Register of Deeds, County of, I hereby certify that the within
instrument was filed in this office for record on the day of 19
at o'clock M.

(Register of Deeds)

By Deputy

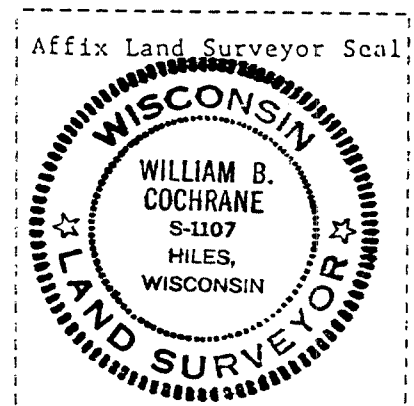
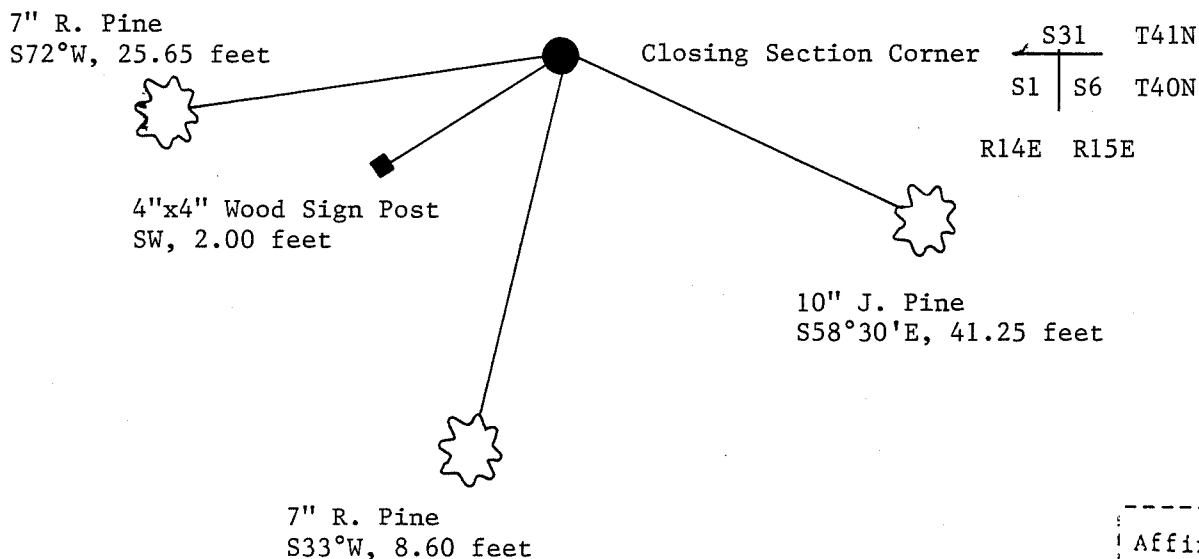
- (e) Describe any material discrepancy between the location of the corner as restored or reestablished and the location of that corner as previously restored or reestablished by distance and direction. Show the discrepancy on the plan view drawing under (d), above. Show the distances between the corner as previously restored or reestablished and (1) the corner as restored or reestablished, and (2) to at least 2 of the witness monuments shown on the drawing in (d), above.

See drawing below.

- (f) Was the corner restored through acceptance of (1) an obliterated evidence location, or, (2) a found perpetuated location?

Restored through acceptance of a found perpetuated location.

- (g&h) Was the corner reestablished through lost corner proportionate methods? If so, show the method, including the directions and distances to other public land survey corners used as evidence or used for proportioning in determining the corner location?



- (i) I, William B. Cochrane
(type or print name) certify that the corner location shown on this record was determined by me or under my direction and control and that this U.S. Public Land Survey Monument Record is correct and complete to the best of my knowledge and belief.

William B. Cochrane October 14, 1986
Signature Date

Certificate ready for filing:

[Signature]
District Ranger

3-9-87
Date