

244705

FILED ON:

12/26/2024 02:24 PM

CORTNEY BRITTEN CLEEREMAN  
REGISTER OF DEEDS

FOREST COUNTY WI

PAGES: 1

INDEX#: G9

U.S. PUBLIC LAND SURVEY MONUMENT RECORD

This form is intended and designed to fulfill all requirements of Wisconsin Administrative Code, Chapter A-E 7.08 U.S. Public Land Survey Monument Record (3) (a)(b)(c)(d)(e)(f)(g)(h)(i). An additional sheet may be added if necessary to confirm with said requirements.

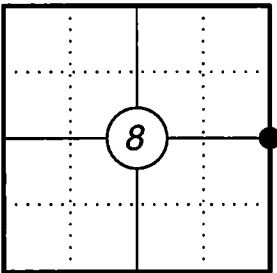
(a) Corner Location:

E 1/4 Corner Section 8  
Township 40 North  
Range 14 East  
Town of Alvin  
County of Forest

Coordinates Obtained By:

Network RTK / Direct Observations  
N: 713056.906  
E: 873554.349

Corner ID: 4014082000



(b) History of Original Corner:

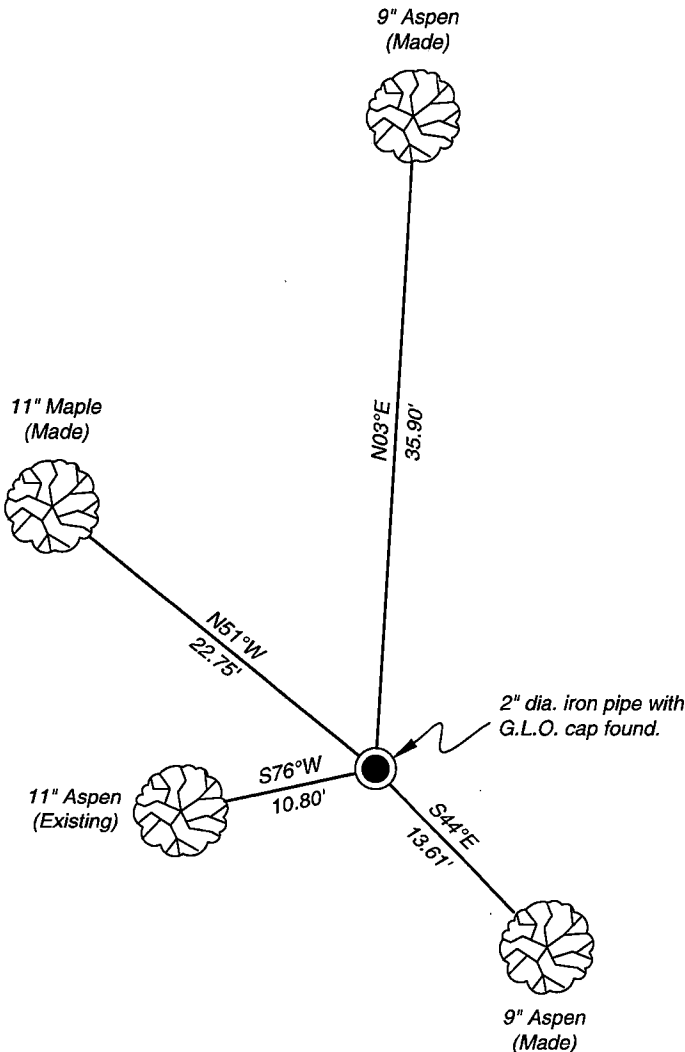
Original Surveyor: William Daugherty      Original B.T.'s: 12" Sugar - N 24° W, 15 Links  
Date of Survey: May, 1865                      6" Sugar - N 28° E, 47 Links

(f)(g)(h) Description of monument found at this corner and if it was accepted, state all evidence (material, testimonial, occupational, plats, records, other monuments) used as a basis for establishing location. If reestablishing through lost corner proportionate methods, indicate all monuments, distances, and directions used to establish. Indicate type of monument and sign post found or set.

For corner history, see previous U.S. Public Land Survey Monument Record by Gary Pisoni, dated November 2, 1989.

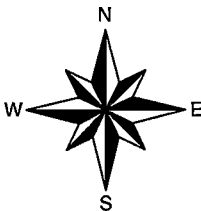
09/17/2024 - I found and accepted a 2" dia. iron pipe with a G.L.O. cap 12" above grade at the corner location. I found one existing bearing tree and 2 USFS steel sign posts, and made three additional bearing trees to witness the corner as shown below.

(c)(d)(e) Plan view of corner with ties to at least four witnesses. If in disagreement with previously established corner, show the distances between the two corners and also indicate the tie to the disputed corner.



Magnetic Bearings

Not to scale



- \* Steel fence post w/ USFS sign found S02°E, 0.92' and N47°W, 2.45' from corner.
- \* Distances to bearing trees are to nail in side.



Certification

I, Gregory S. Maines, Professional Land Surveyor No. 2729, hereby certify that the corner location on this record was referenced by me or under my direction and control and that this U.S. Public Land Survey Monument Record is complete to the best of my knowledge and belief. REF: 2024355

Index No.:

44014082000

G9

## U.S. PUBLIC LAND SURVEY MONUMENT RECORD

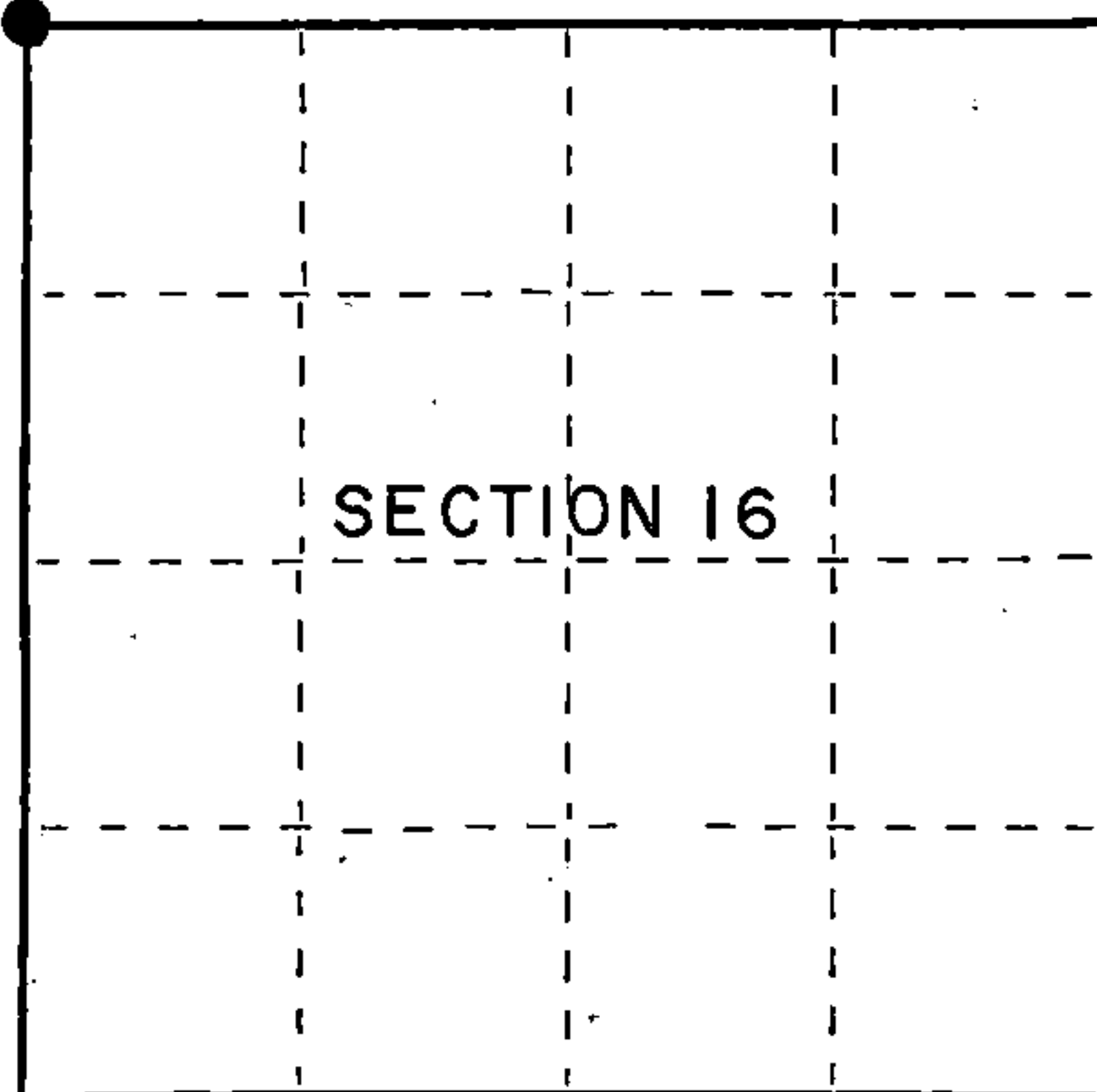
Index No. J-9

State of Wisconsin }  
 County of Forest } ss.

I, Gary L. Pisoni, do hereby  
 certify that on the 2nd day  
 of November, 1986, I found  
 evidence of the Northwest  
 corner of Section 16  
 Township 40, North, Range  
 14E, Fourth Principal Meridian,  
 as described hereon; and that from this evidence  
 I established a new monument and accessories  
 as described hereon to perpetuate the original  
 location of this corner.

Resident witnesses:

Rich Sloat  
 \_\_\_\_\_  
 \_\_\_\_\_  
 \_\_\_\_\_



○ = Corner monument restored.

## History of original corner establishment:

Original Government Survey in 1865 by Wm. E. Daugherty. Dependent resurvey of 1924. Corner restored from remains of original bearing tree. Jean Resvick, a land surveyor with the U.S. Forest Service found a 2½" diameter by 30" long iron pipe with a brass cap stamped: T40N, R14E, S8, S9, S16, S17, 1924, U.S. General Land Office Survey from which the following bear:

GLO Elm	S. 5° 15' W.	65.34 feet
Elm 6"	N. 85° E.	23.6 feet
Spruce 6"	S. 80° W.	20.6 feet
Sign post Southeast	1.0 feet	

## Description of corner evidence found:

Monument as described and in place, from which the following bear:

Elm (GLO) 24"	S. 5° 15' W.	65.34 feet
Spruce 8"	S. 80° W.	20.60 feet
Steel sign post	S. 44° E.	0.8 feet

Description of monument and accessories I established to perpetuate the original location of this corner.

Blazed and scribed the following new bearing tree:

White Spruce 7"	S. 85° E.	11.52 feet
-----------------	-----------	------------

Dated at Iron River, MI, this 2nd day of November, 1987.

Signature Gary L. Pisoni Title Land Surveyor Registration No. S-1634  
 (County Surveyor, Registered Land Surveyor, or other duly authorized official)

Office of Register of Deeds, County of Forest, I hereby certify that the within  
 instrument was filed in this office for record on the 18th day of March, 1988  
 at 12:50 o'clock P. M.

Paul Achenbrenner  
 (Register of Deeds)

By \_\_\_\_\_ Deputy

44014080000

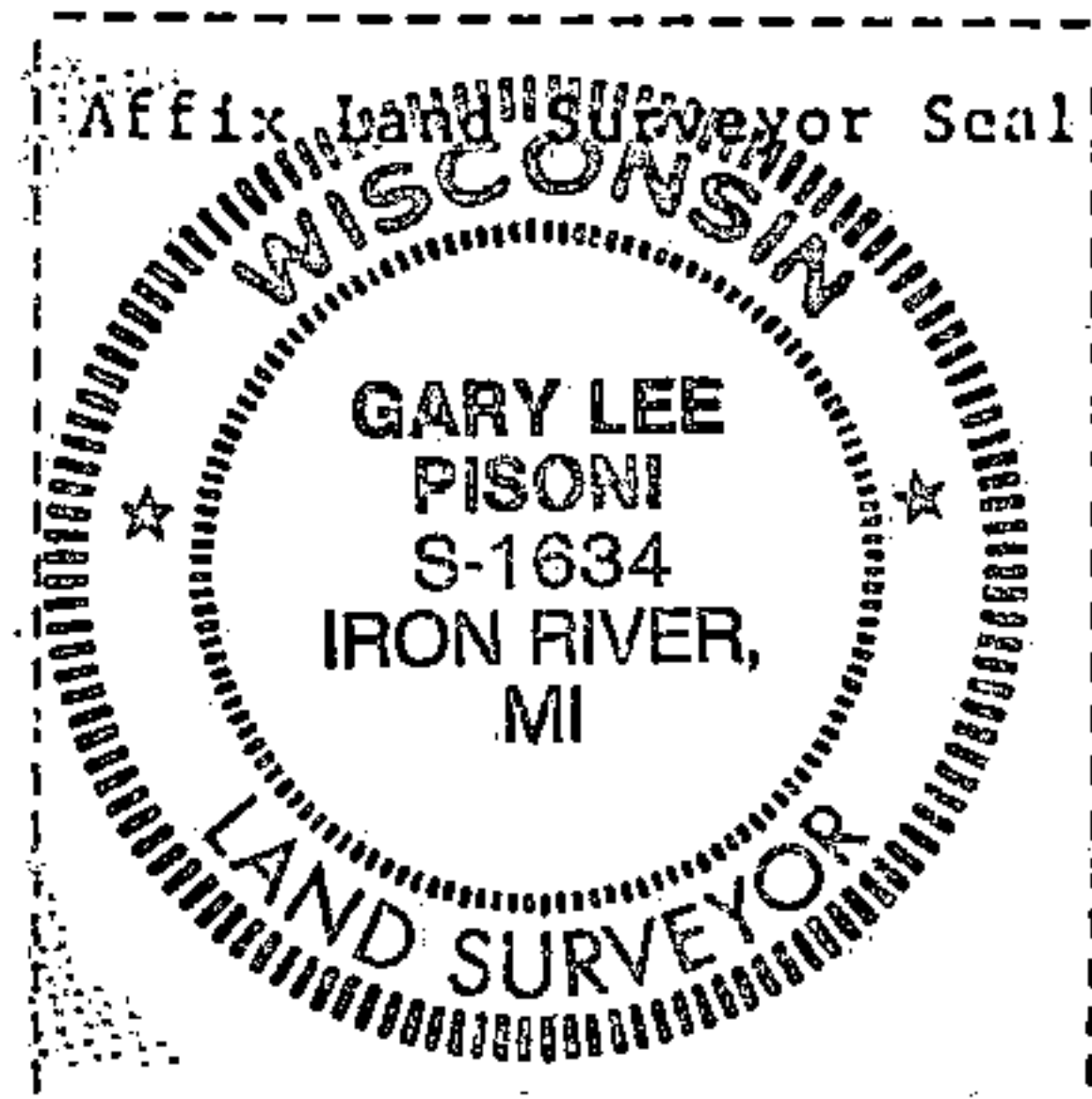
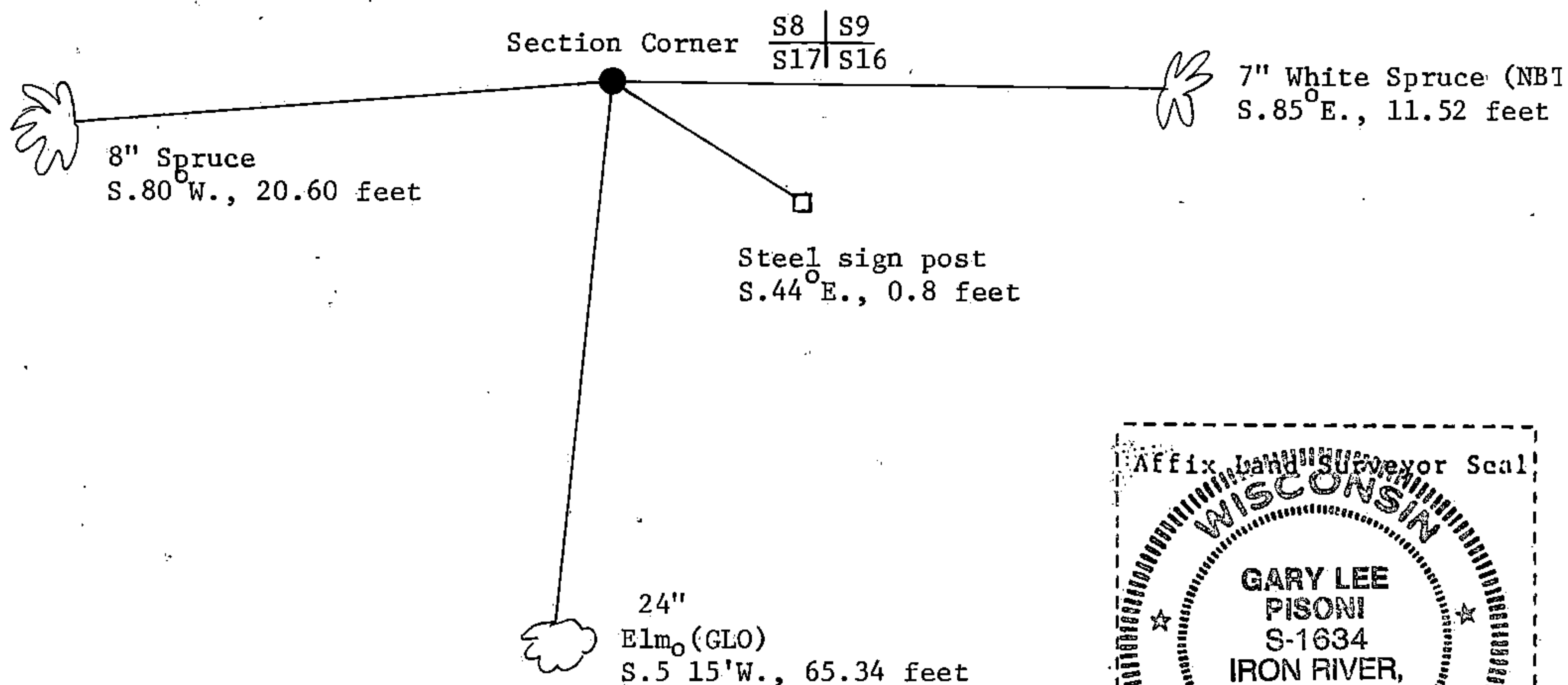
(e) Describe any material discrepancy between the location of the corner as restored or reestablished and the location of that corner as previously restored or reestablished by distance and direction. Show the discrepancy on the plan view drawing under (d), above. Show the distances between the corner as previously restored or reestablished and (1) the corner as restored or reestablished, and (2) to at least 2 of the witness monuments shown on the drawing in (d), above.

See drawing below.

(f) Was the corner restored through acceptance of (1) an obliterated evidence location, or, (2) a found perpetuated location?

Restored through acceptance of a found perpetuated location.

(g&h) Was the corner reestablished through lost corner proportionate methods? If so, show the method, including the directions and distances to other public land survey corners used as evidence or used for proportioning in determining the corner location?



(i) I, Gary L. Pisoni  
(type or print name) certify that the corner location shown on this record was determined by me or under my direction and control and that this U.S. Public Land Survey Monument Record is correct and complete to the best of my knowledge and belief.

Signature

Gary L. Pisoni

Date

11-2-87

Survey requested by:

Edward Lange  
District Ranger

Date

3-7-88