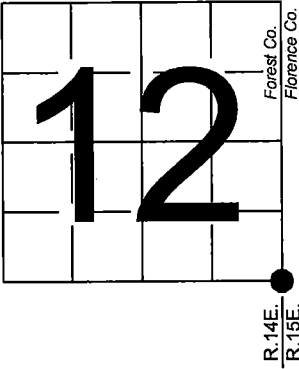


U. S. PUBLIC LAND SURVEY MONUMENT RECORD

NOTE: This form is intended and designed to fulfill all requirements of Wisconsin Administrative Code, Chapter A-E 7.08 U.S. Public Land Survey Monument Record (3) (a-i)

A-E 7.08(3)(a) Identity of corner:
Southeast Corner Section 12,
Township 40 North, Range 14 East
of the Fourth Principal Meridian,
Town of Alvin, Forest County,
Wisconsin

WISCRS - FOREST COUNTY
N: 710,409.459 USft (XXX,XXX.XXX)
E: 894,478.052 USft (XXX,XXX.XXX)
Datum: NAD83 (2011)
GNSS Method RTK
GNSS Control WISCRS VRS



The coordinate value shown has been verified by the average of two or more GPS observations at a markedly different time. Coordinates shown in parenthesis are previously published values.

A-E 7.08(3)(b)

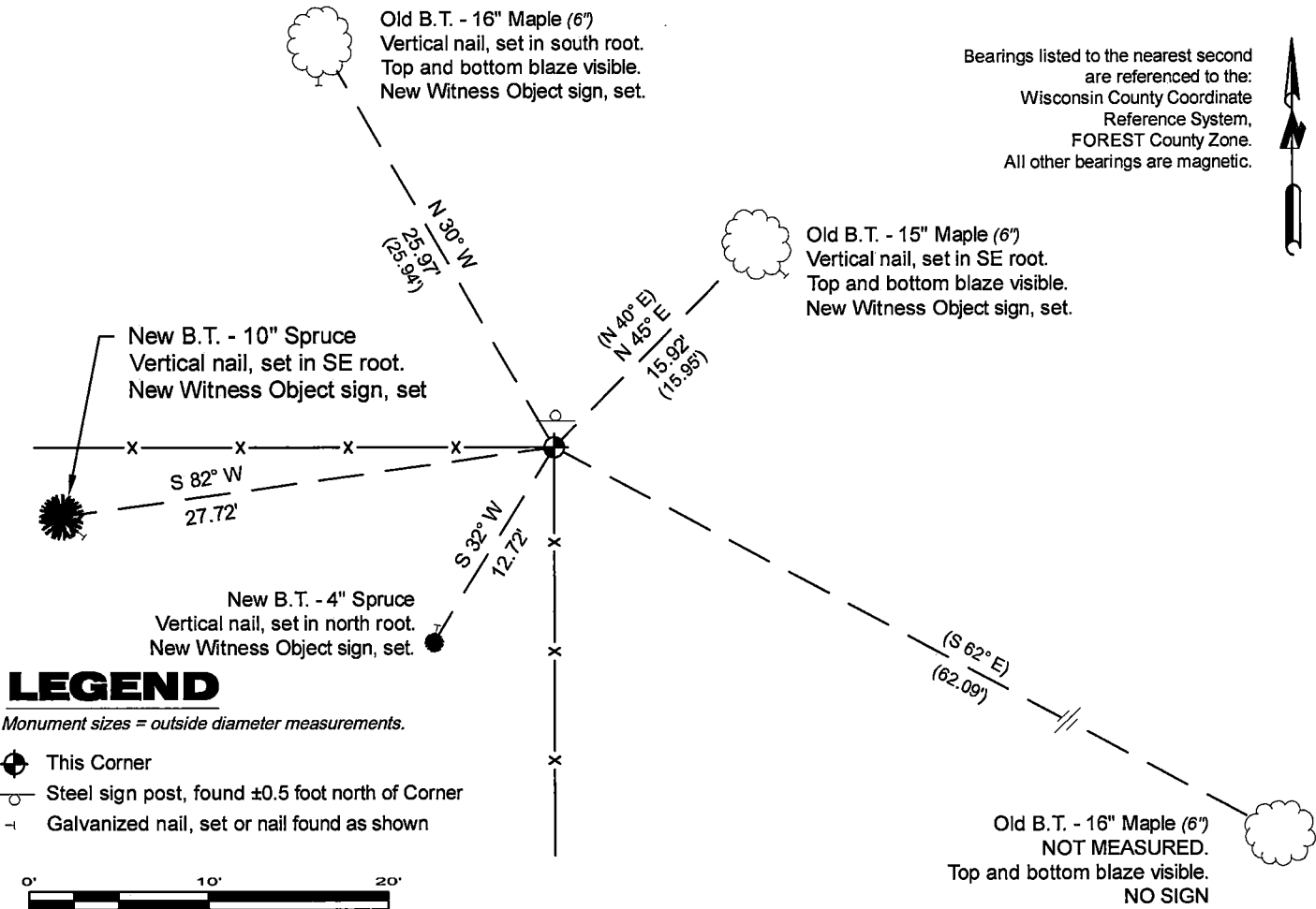
Original Surveyor: Artemas Curtis - June 1858
Yellow Birch 18 - S 28° W, 32 Links, Yellow Birch 20 - N 45° W, 51 Links
Sugar 14 - N 48° E, 41 Links, Yellow Birch 14 - S 47° E, 64 Links

See previous Certified Land Corner Restoration - J25 - August 5, 1976 - Surveyor 802 - Jean F. Resvick. THENCE:

- 1984 - Surveyor S 1107 - William B. Cochrane - indicates this position as "2 1/2 inch diameter galvanized pipe monument" on Forest Co. record Map #401412-19870311.
- 1987 - Surveyor S 1107 - William B. Cochrane - indicates this position as "2 1/2 inch diameter galvanized pipe monument 60 inches long with a brass cap" on Florence Co. record Map #C1100.

December 10, 2024 - In performing the 2024 - Forest County - "PLSS Corner Remonumentation and GPS Services" project, I found a 1-7/8" diameter galvanized iron pipe monument with a 2.5" diameter brass cap stamped to identify the corner. The monument is on highland in open hardwoods and extends ±6" above grade. I also found 3 of Resvick's bearing trees alive and in good condition. I established 2 new reference monuments as shown below.

A-E 7.08(3)(c)(d) Plan view of corner with references to at least 4 witness monuments.



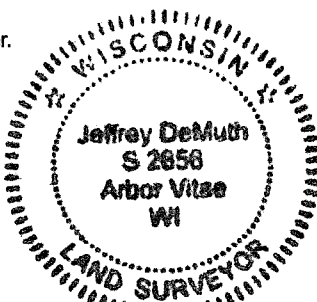
A-E 7.08(3)(e) 1858 Surveyor set a post, 1977 Surveyor finds a 2" diameter galvanized iron pipe monument with a brass cap stamped to identify the corner location, 1984 & 1987 Surveyor finds 2 1/2" diameter galvanized pipe monument . In 2024, I found a 1-7/8" diameter galvanized iron pipe monument with a 2.5" diameter brass cap stamped to identify the corner.
A-E 7.08(3)(f) I accept this monument in good faith as a FOUND PERPETUATED LOCATION of the corner.
A-E 7.08(3)(g)(h) This corner was not determined through lost-corner-proportionate methods.

A-E 7.08(3)(i) I, Jeffrey L. DeMuth, Professional Land Surveyor No. S-2656, hereby certify that the corner location on this record was determined by me or under my direction and control, and that this U.S. Public Land Survey Monument Record is correct and complete to the best of my knowledge, and belief.

SIGNATURE

December 18, 2024

DATE



44014120000

44014120000

J25

CERTIFIED LAND CORNER RESTORATION

State of Wisconsin

County of Forest

ss.

I, Jean F. Resvick, do hereby certify that on the 2nd day of August, 1976, I found evidence of the Southeast Section corner of Section 12 Township 40 North Range 14 East, Fourth Principal Meridian, as described hereon; and that from this evidence I established a new monument and accessories as described hereon to perpetuate the original location of this corner:

Description of original monument and accessories and subsequent restorations:

Surveyed in 1858 by Artemas Curtis
Dependent resurvey by Hugh B. Crawford in 1944 thru 1950
From remains of original evidence set iron post, 3 feet long, 2 ins. diam., 28 ins. in the ground, with brass cap marked T40N, R14E, R15E, S12, S7, S13, S18, 1945
Poplar 4, N20°45'E, 24 1/2 lks.
Poplar 4, S80E, 16 lks.
Poplar 4, S50W, 40 lks.
Poplar 4, N27W, 29 1/2 lks.

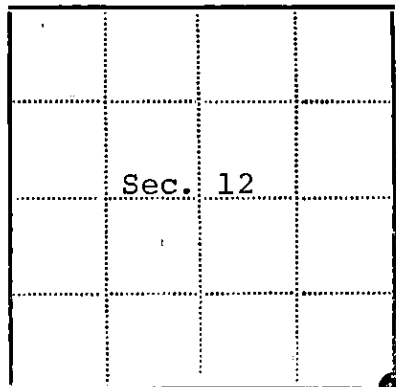
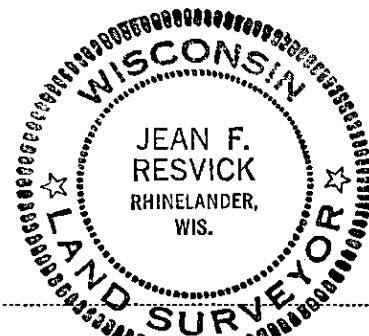
Description of corner evidence found:

Monument in place as described
Aspen stump N27W, 29 1/2 lks.
Aspen stump N21E, 24 1/2 lks.
Other stumps removed by road building and clearing.

Description of monument and accessories I established to perpetuate the location of this corner:

Blazed and scribed the following new bearing trees:
Maple 6, N40E, 15.95 ft.
Maple 6, S62E, 62.09 ft.
Maple 7, S76W, 52.31 ft.
Maple 6, N30W, 26.94 ft.
Set steel sign post 0.5 ft. north of monument.

44014120000



- - Corner monument restored
- -

Resident witnesses

Dated at Rhineland Wisconsin, this 5 day of August 1976.

Signature Jean F. Resvick Title Land Surveyor
(County Surveyor, Registered Land Surveyor, or other duly authorized official)

Surveyors Registration No. S-802 DOCUMENT NUMBER 110927

Office of Register of Deeds County of Forest

I hereby certify that the within instrument was filed in this office for record on the 31st day of January 1977, and was filed in Book No. _____ Page No. _____ of County Records.

Signature Eugene Stutzman Title Register of Deeds

Township 40 North, Range 14 East, Section 12, Index No. J-25, Page No. _____

7
25