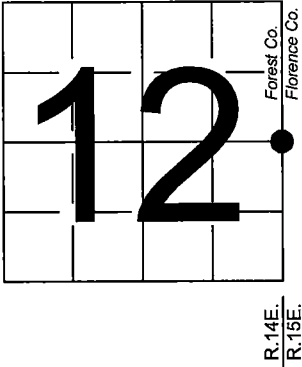


U. S. PUBLIC LAND SURVEY MONUMENT RECORD

NOTE: This form is intended and designed to fulfill all requirements of Wisconsin Administrative Code, Chapter A-E 7.08 U.S. Public Land Survey Monument Record (3) (a-i)

A-E 7.08(3)(a) Identity of corner:  
East 1/4 Corner Section 12,  
Township 40 North, Range 14 East  
of the Fourth Principal Meridian,  
Town of Alvin, Forest County,  
Wisconsin

WISCRS - FOREST COUNTY  
N: 713,043.720 USft (XXX,XXX.XXX)  
E: 894,494.154 USft (XXX,XXX.XXX)  
Datum: NAD83 (2011)  
GNSS Method RTK  
GNSS Control WSCORS VRS



The coordinate value shown has been verified by the average of two or more GPS observations at a markedly different time. Coordinates shown in parenthesis are previously published values.

A-E 7.08(3)(b)

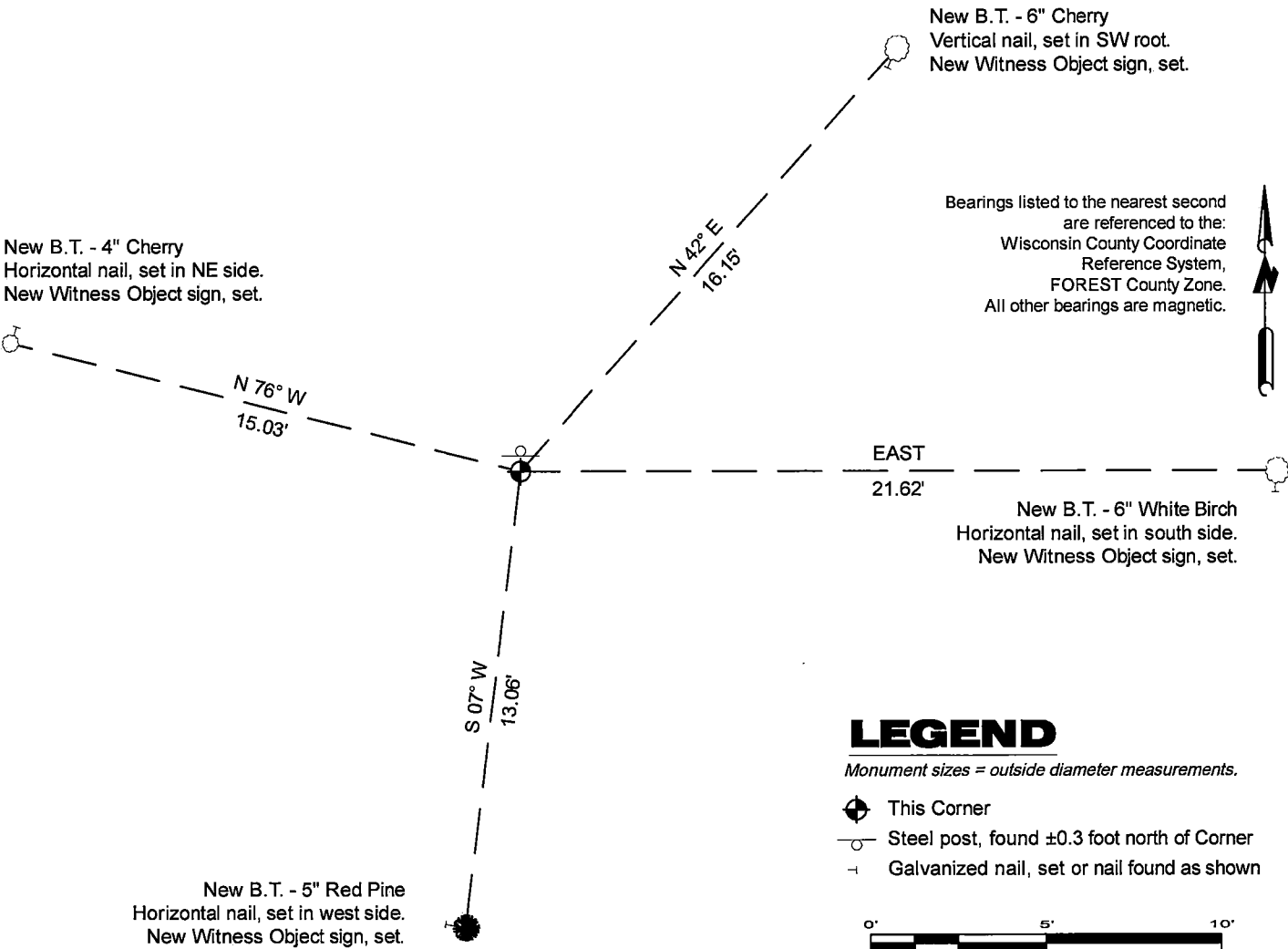
Original Surveyor: Artemas Curtis - June 1858  
Sugar 16 - N 76° E, 8 Links, Sugar 16 - N 18° W, 58 Links

See previous Certified Land Corner Restoration - G 25 - September 22, 1976 - Surveyor 802 - Jean F. Resvick. THENCE:

- 1984 - Surveyor S 1107 - William B. Cochrane - indicates this position as "2 1/2 inch diameter galvanized pipe monument" on Forest Co. record Map #401412-19870311.

December 16, 2024 - In performing the 2024 - Forest County - "PLSS Corner Remonumentation and GPS Services" project, I found a 1-7/8" diameter galvanized iron pipe monument with a 2.5" diameter brass cap stamped to identify the corner. The monument is on highland and extends ±4" above grade. I did not find any of Resvick's bearing trees. I established 4 new reference monuments as shown below.

A-E 7.08(3)(c)(d) Plan view of corner with references to at least 4 witness monuments.

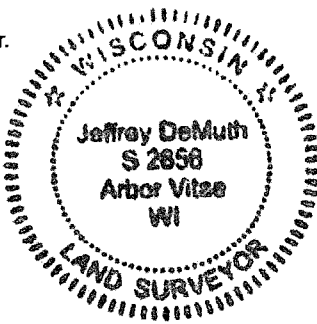


A-E 7.08(3)(e) 1858 Surveyor set a post, 1976 Surveyor found an iron post 3 ft. long and 2 ins. diam. with a brass cap stamped to identify corner. In 2024, 1984 Surveyor found a 2 1/2" diameter galvanized pipe monument. I found a 1-7/8" diameter galvanized iron pipe monument with a 2.5" diameter brass cap stamped to identify the corner  
A-E 7.08(3)(f) I accept this monument in good faith as a FOUND PERPETUATED LOCATION of the corner.  
A-E 7.08(3)(g)(h) This corner was not determined through lost-corner-proportionate methods.

A-E 7.08(3)(i) I, Jeffrey L. DeMuth, Professional Land Surveyor No. S-2656, hereby certify that the corner location on this record was determined by me or under my direction and control, and that this U.S. Public Land Survey Monument Record is correct and complete to the best of my knowledge, and belief.

SIGNATURE

December 23, 2024  
DATE



44014122000

44014122000

G25

CERTIFIED LAND CORNER RESTORATION

State of Wisconsin }  
County of Forest } ss.

I Jean F. Resvick, do hereby certify that on the 13 day of September, 1976, I found evidence of the East Quarter corner of Section 12 Township 40 North, Range 14 East, Fourth Principal Meridian, as described hereon; and that from this evidence I established a new monument and accessories as described hereon to perpetuate the original location of this corner:

Description of original monument and accessories and subsequent restorations:

Surveyed in 1858 by Artemas Curtis  
Dependent resurvey in 1945 by Hugh B. Crawford  
From remains of original bearing tree, set iron post 3 ft. long, 2 ins. diam. 30 ins. in the ground with brass cap marked 1/4, S12, S7, 1945.  
Yellow Birch, 18 ins. diam, bears N82E, 39 1/2 lks. distance.  
Hemlock, 8 ins. diam, bears N47W, 61 lks distance.

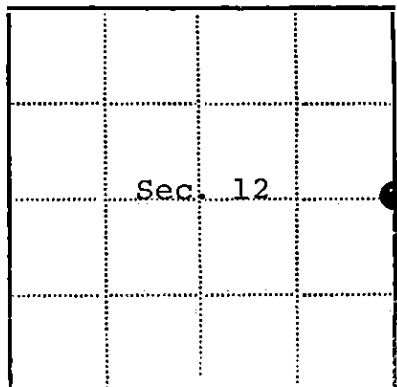
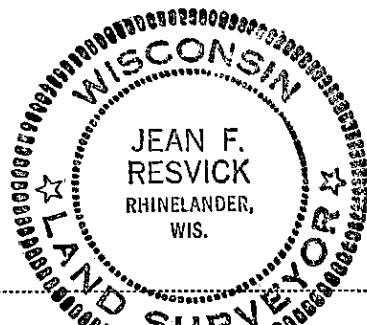
Description of corner evidence found:

Monument as described above.  
Yellow Birch snag, scribed, bears N82E, 39 1/2 lks.  
Hemlock stump, fallen tree scribed, N47W, 61 lks.

Description of monument and accessories I established to perpetuate the location of this corner:

Blazed and scribed the following new bearing trees.  
Balsam 5, N43E, 48 1/2 lks.  
Red Pine 6, S89W, 100 3/4 lks.  
Set sign post North side monument.

44014122000



● - Corner monument restored  
□ -

Resident witnesses.....

Dated at RhinelandeR Wisconsin, this 13 day of September 19 76.

Signature Jean F. Resvick Title Land Surveyor  
(County Surveyor, Registered Land Surveyor, or other duly authorized official)

Surveyors Registration No. S-802 DOCUMENT NUMBER- 110926

Office of Register of Deeds County of FOREST

I hereby certify that the within instrument was filed in this office for record on the 31st day of January 19 77, and was filed in Book No. \_\_\_\_\_ Page No. \_\_\_\_\_ of County Records.

Signature Eugene Staszny Title Register of Deeds

Township 40 North, Range 14 East Section 12 Index No. G-25, Page No. \_\_\_\_\_

625