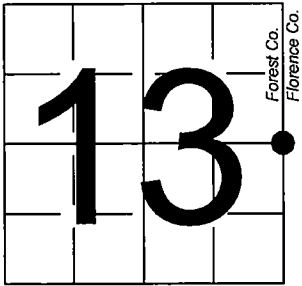


U. S. PUBLIC LAND SURVEY MONUMENT RECORD

NOTE: This form is intended and designed to fulfill all requirements of Wisconsin Administrative Code, Chapter A-E 7.08 U.S. Public Land Survey Monument Record (3) (a-i)

A-E 7.08(3)(a) Identity of corner:  
East 1/4 Corner Section 13,  
Township 40 North, Range 14 East  
of the Fourth Principal Meridian,  
Town of Alvin, Forest County,  
Wisconsin

WISCRS - FOREST COUNTY  
N: 707,783.461 USft (XXX,XXX.XXX)  
E: 894,455.112 USft (XXX,XXX.XXX)  
Datum: NAD83 (2011)  
GNSS Method RTK  
GNSS Control WISCRS VRS



The coordinate value shown has been verified by the average of two or more GPS observations at a markedly different time. Coordinates shown in parenthesis are previously published values.

A-E 7.08(3)(b)

Original Surveyor: Artemas Curtis - June 1858  
Sugar 12 - S 48° W, 47 Links, Yellow Birch 12 - N 72° E, 58 Links

See previous Certified Land Corner Restoration - L-25 - January 7, 1988 - Surveyor 1107 - William B. Cochrane. THENCE:

- February 1, 2001 - Surveyor 1634 - Gary Lee Pisoni - indicates this position as "4" diameter concrete monument with brass cap" on Florence Co. record Map #M0619.
- June 6, 2006 - Surveyor 1634 - Gary Lee Pisoni - indicates this position as "4" diameter concrete monument with brass cap" on Florence Co. record Map #M0618.
- March 1, 2012, Surveyor 1763 - Thomas A. Boettcher - indicates this position as "G.L.O. brass capped 6" dia. concrete monument" on Forest Co. record Map #401413-20120301.

December 10, 2024 - In performing the 2024 - Forest County - "PLSS Corner Remonumentation and GPS Services" project, I found a 4" diameter concrete monument with a 2.5" diameter brass cap stamped to identify the corner. The monument is on highland along a north south fence line, on the east side of a woods road, and extends ±12" above grade. I also found 1 of Cochrane's bearing trees alive and in good condition, and 1 bearing tree dead and standing. I established 3 new reference monuments as shown below.

A-E 7.08(3)(c)(d) Plan view of corner with references to at least 4 witness monuments.



Bearings listed to the nearest second are referenced to the:  
Wisconsin County Coordinate Reference System,  
FOREST County Zone.  
All other bearings are magnetic.

New B.T. - 9" Maple  
Vertical nail, set  
in east root.  
New Witness Object  
sign, set.

New B.T. - 15" Maple  
Vertical nail, set  
in east root.  
New Witness Object  
sign, set.

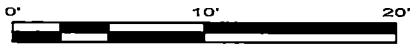
New B.T. - 7" Maple  
Vertical nail, set  
in west root.  
New Witness Object  
sign, set.

Old B.T. - 12" Maple (5")  
Vertical nail, set  
in north root.  
Top & bottom blaze visible.  
New Witness Object sign, set.

LEGEND

Monument sizes = outside diameter measurements.

- ⊕ This Corner
- ⊖ Steel sign post, found ±0.4 foot NW of Corner
- ⊙ Galvanized nail, set or nail found as shown

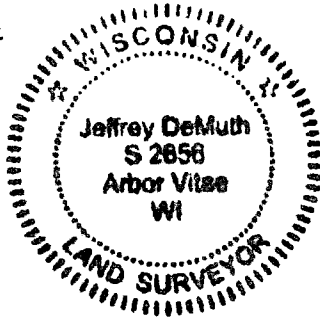


A-E 7.08(3)(e) 1858 Surveyor set a post, 1988 Surveyor found a 4" diameter concrete monument, with a brass cap stamped to identify corner, 2001 & 2006 find the same, 2012 Surveyor finds a similar monument. In 2024, I found a 4" diameter concrete monument with a 2.5" diameter brass cap stamped to identify the corner.

A-E 7.08(3)(f) I accept this monument in good faith as a FOUND PERPETUATED LOCATION of the corner.

A-E 7.08(3)(g)(h) This corner was not determined through lost-corner-proportionate methods.

A-E 7.08(3)(i) I, Jeffrey L. DeMuth, Professional Land Surveyor No. S-2656, hereby certify that the corner location on this record was determined by me or under my direction and control, and that this U.S. Public Land Survey Monument Record is correct and complete to the best of my knowledge, and belief.



SIGNATURE

December 12, 2024

DATE

44014132000

44014132000

L25

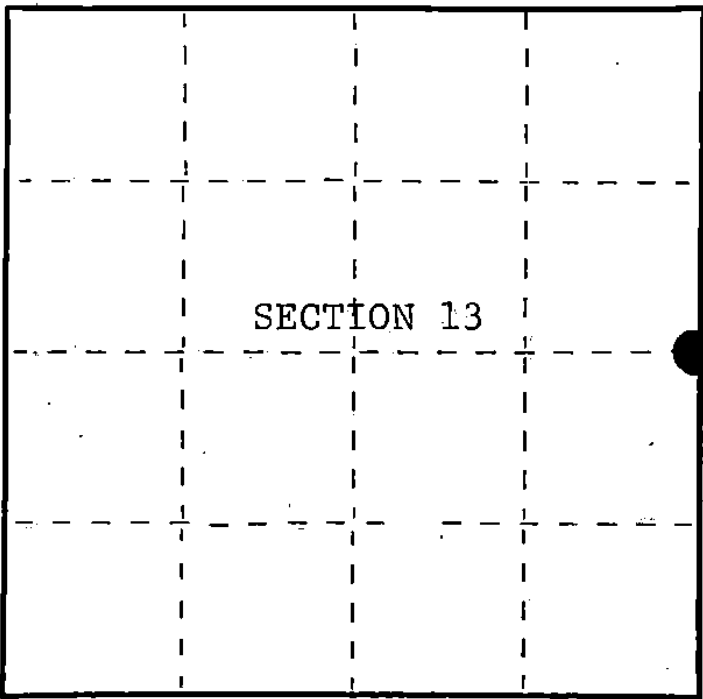
U.S. PUBLIC LAND SURVEY MONUMENT RECORD

Index No. L-25

State of Wisconsin }  
County of Forest } ss.

I, William B. Cochrane, do hereby  
certify that on the 25th day  
of August, 1987, I found  
evidence of the East Quarter  
corner of Section 13  
Township 40 North, Range  
14 East, Fourth Principal Meridian,  
as described hereon; and that from this evidence  
I established a new monument and accessories  
as described hereon to perpetuate the original  
location of this corner.

Resident witnesses:



○ = Corner monument restored.

History of original corner establishment:

Original Government Survey in 1858 by Artemas Curtis.

Dependent Resurvey in 1945 by Hugh B. Crawford. From the remains of original bearing trees, set a 4 inch diameter concrete monument, 3 feet long, 28 inches in the ground, with an iron post in center, and a brass cap mkd; 1/4, S13, S18, 1945. From which the following bear;

Elm	4"	N43°30'W	22.00 lks.
Elm	6"	S51°30'E	21.50 lks.

Description of corner evidence found:

Found monument as described and in place, from which the following bears;

Elm(Dead)	10"	S51°30E	14.19 feet
-----------	-----	---------	------------

The NW bearing tree was removed from road construction.

Description of monument and accessories I established to perpetuate the original location of this corner.

Blazed and scribed the following new bearing trees;

Maple	6"	N29°E	10.95 feet
Maple	5"	S27°E	11.74 feet
Steel Sign Post		NE	0.75 feet

Dated at Hiles, Wis., this 7th day of January, 1988

Signature William B. Cochrane Title Land Surveyor Registration No. S-1107  
(County Surveyor, Registered Land Surveyor, or other duly authorized official)

Office of Register of Deeds, County of Forest, I hereby certify that the within  
instrument was filed in this office for record on the 18th day of March, 1988  
at 12:50 o'clock P. M.

Paul Aschenbrenner  
(Register of Deeds)

By Deputy

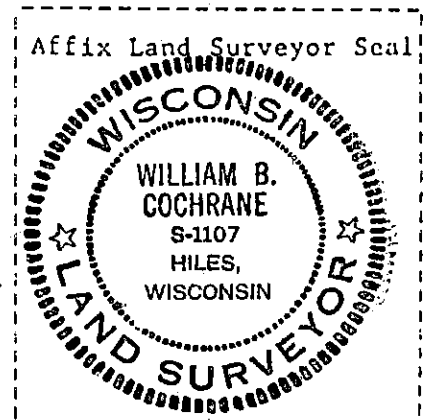
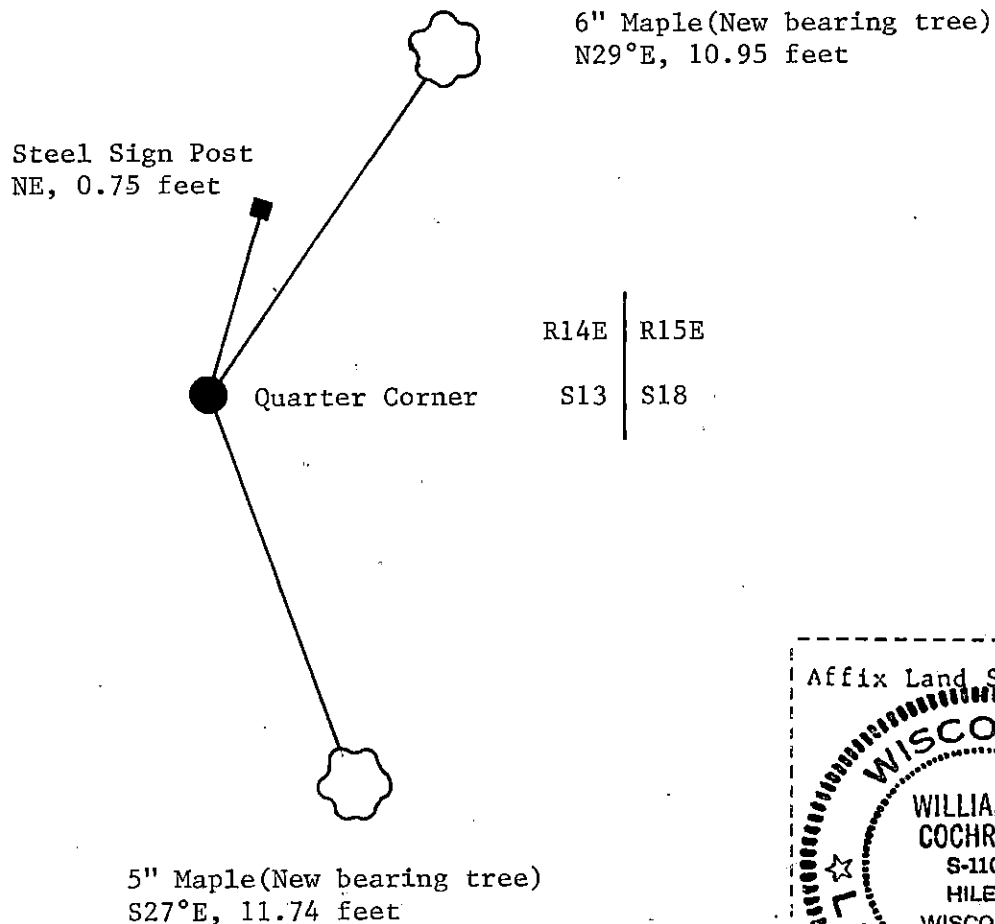
- (e) Describe any material discrepancy between the location of the corner as restored or reestablished and the location of that corner as previously restored or reestablished by distance and direction. Show the discrepancy on the plan view drawing under (d), above. Show the distances between the corner as previously restored or reestablished and (1) the corner as restored or reestablished, and (2) to at least 2 of the witness monuments shown on the drawing in (d), above.

See drawing below.

- (f) Was the corner restored through acceptance of (1) an obliterated evidence location, or, (2) a found perpetuated location?

Restored through acceptance of a found perpetuated location.

- (g&h) Was the corner reestablished through lost corner proportionate methods? If so, show the method, including the directions and distances to other public land survey corners used as evidence or used for proportioning in determining the corner location?



- (i) I, William B. Cochrane  
(type or print name) certify that the corner location shown on this record was determined by me or under my direction and control and that this U.S. Public Land Survey Monument Record is correct and complete to the best of my knowledge and belief.

William B. Cochrane January 7, 1988  
Signature Date

Survey requested by: Edward [Signature] 3-8-88  
District Ranger Date