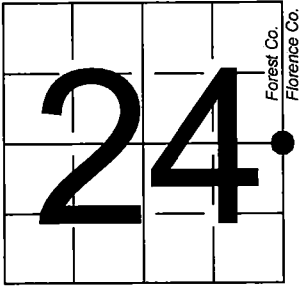


U. S. PUBLIC LAND SURVEY MONUMENT RECORD

NOTE: This form is intended and designed to fulfill all requirements of Wisconsin Administrative Code, Chapter A-E 7.08 U.S. Public Land Survey Monument Record (3) (a-i)

A-E 7.08(3)(a) Identity of corner:  
East 1/4 Corner Section 24,  
Township 40 North, Range 14 East  
of the Fourth Principal Meridian,  
Town of Alvin, Forest County,  
Wisconsin

WISCRS - FOREST COUNTY  
N: 702,531.216 USft (XXX,XXX.XXX)  
E: 894,411.177 USft (XXX,XXX.XXX)  
Datum: NAD83 (2011)  
GNSS Method RTK  
GNSS Control WISCORS VRS



The coordinate value shown has been verified by the average of two or more GPS observations at a markedly different time. Coordinates shown in parenthesis are previously published values.

A-E 7.08(3)(b)

Original Surveyor: Artemas Curtis - June 1858  
Sugar 12 - N 63° W, 43 Links, Sugar 10 - S 44° E, 3148 Links

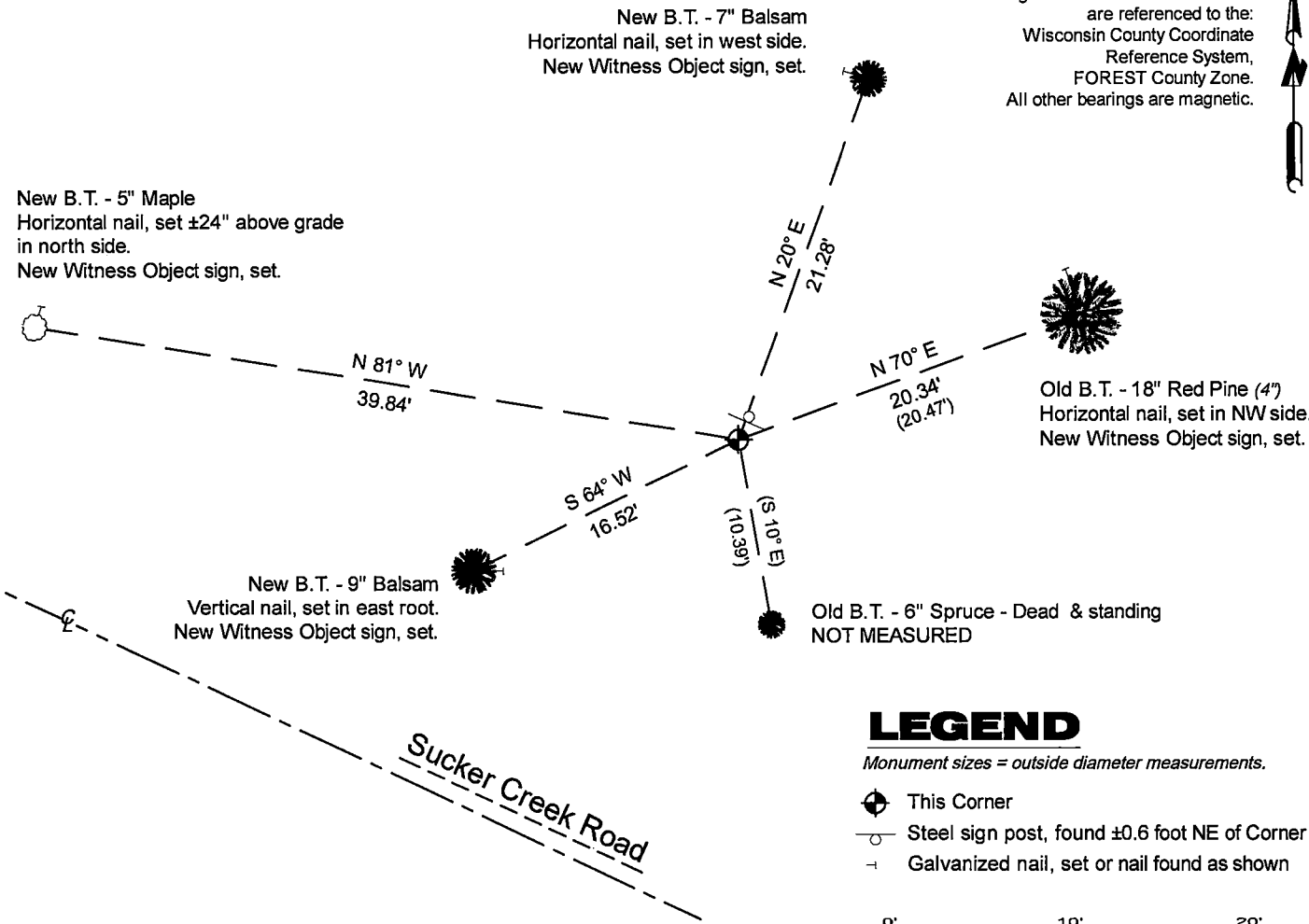
See previous Certified Land Corner Restoration - P25 - August 5, 1976 - Surveyor 802 - Jean F. Resvick THENCE:

- 1981 - Surveyor 1107 - William B. Cochrane - indicates this position as "Dependent Resurvey monument" on Forest Co. record Map #401424-19831102.

December 10, 2024 - In performing the 2024 - Forest County - "PLSS Corner Remonumentation and GPS Services" project, I found a 4" diameter concrete monument with a 2.5" diameter brass cap stamped to identify the corner. The monument is on highland and extends ±10" above grade. I also found 1 of Resvick's bearing trees, alive and in good condition, and 1 dead and standing. I established 3 new reference monuments as shown below.

A-E 7.08(3)(c)(d) Plan view of corner with references to at least 4 witness monuments.

Bearings listed to the nearest second are referenced to the:  
Wisconsin County Coordinate Reference System, FOREST County Zone.  
All other bearings are magnetic.

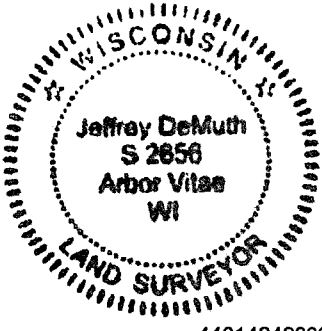


A-E 7.08(3)(e) 1858 Surveyor set a post, 1976 Surveyor finds a 4" diameter concrete monument, with a brass cap stamped to identify corner, 1981 Surveyor finds a similar monument. In 2024, I found a 4" diameter concrete monument with a 2.5" diameter brass cap stamped to identify the corner.

A-E 7.08(3)(f) I accept this monument in good faith as a FOUND PERPETUATED LOCATION of the corner.  
A-E 7.08(3)(g)(h) This corner was not determined through lost-corner-proportionate methods.

A-E 7.08(3)(i) I, Jeffrey L. DeMuth, Professional Land Surveyor No. S-2656, hereby certify that the corner location on this record was determined by me or under my direction and control, and that this U.S. Public Land Survey Monument Record is correct and complete to the best of my knowledge, and belief.

SIGNATURE \_\_\_\_\_ DATE December 12, 2024



# CERTIFIED LAND CORNER RESTORATION

State of Wisconsin

County of Forest

ss.

I, Jean F. Resvick, do hereby certify that on the 2nd day of August, 1976, I found evidence of the East quarter corner of Section 24 Township 40 North, Range 14 East, Fourth Principal Meridian, as described hereon; and that from this evidence I established a new monument and accessories as described hereon to perpetuate the original location of this corner:

## Description of original monument and accessories and subsequent restorations:

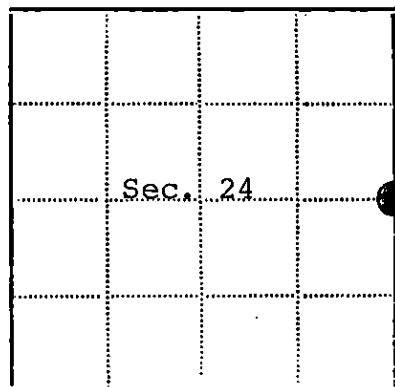
Surveyed in 1858 by Artemas Curtis  
Dependent resurvey by Hugh B. Crawford in 1944 thru 1950  
Replaced old post found with a concrete monument, 3 feet long, 4 inches diameter, 30 inches in the ground with brass cap marked:  
1/4, S24, S19, 1945  
Poplar 5, N14°45'E, 44 lks.  
Poplar 6, S83W, 45 1/2 lks.

## Description of corner evidence found:

Monument as described, concrete spalling but still stable.  
Aspen stump N14°45'E, 44 lks.  
Aspen snag 11", S83W, 45 1/2 lks.

## Description of monument and accessories I established to perpetuate the location of this corner:

Blazed and scribed the following new bearing trees:  
Red pine 4, N70E, 20.47 ft.  
Spruce 6, S10E, 10.39 Ft..  
Set steel sign post north side of monument.



- - Corner monument restored
- -

Resident witnesses

Dated at Rhineland Wisconsin, this 5 day of August, 1976.

Signature Jean F. Resvick Title Land Surveyor  
(County Surveyor, Registered Land Surveyor, or other duly authorized official)

Surveyors Registration No. S-802 DOCUMENT No. 110928

Office of Register of Deeds County of Forest

I hereby certify that the within instrument was filed in this office for record on the 31st day of January, 1977, and was filed in Book No.        Page No.        of County Records.

Signature Eugene Stutzman Title Register of Deeds

Township 40 North, Range 14 East, Section 19, Index No. P-25, Page No.       



44014 24 2000