

U. S. PUBLIC LAND SURVEY MONUMENT RECORD

NOTE: This form is intended and designed to fulfill all requirements of Wisconsin Administrative Code, Chapter A-E 7.08 U.S. Public Land Survey Monument Record (3) (a-i)

A-E 7.08(3)(a) Identity of corner:
Southeast Corner Section 25,
Township 40 North, Range 14 East
of the Fourth Principal Meridian,
Town of Alvin, Forest County,
Wisconsin

WISCRS - FOREST COUNTY
N: 694,665.348 USft (XXX,XXX.XXX)
E: 894,339.451 USft (XXX,XXX.XXX)
Datum: NAD83 (2011)
GNSS Method RTK
GNSS Control WISCORS VRS



The coordinate value shown has been verified by the average of two or more GPS observations at a markedly different time. Coordinates shown in parenthesis are previously published values.

A-E 7.08(3)(b)

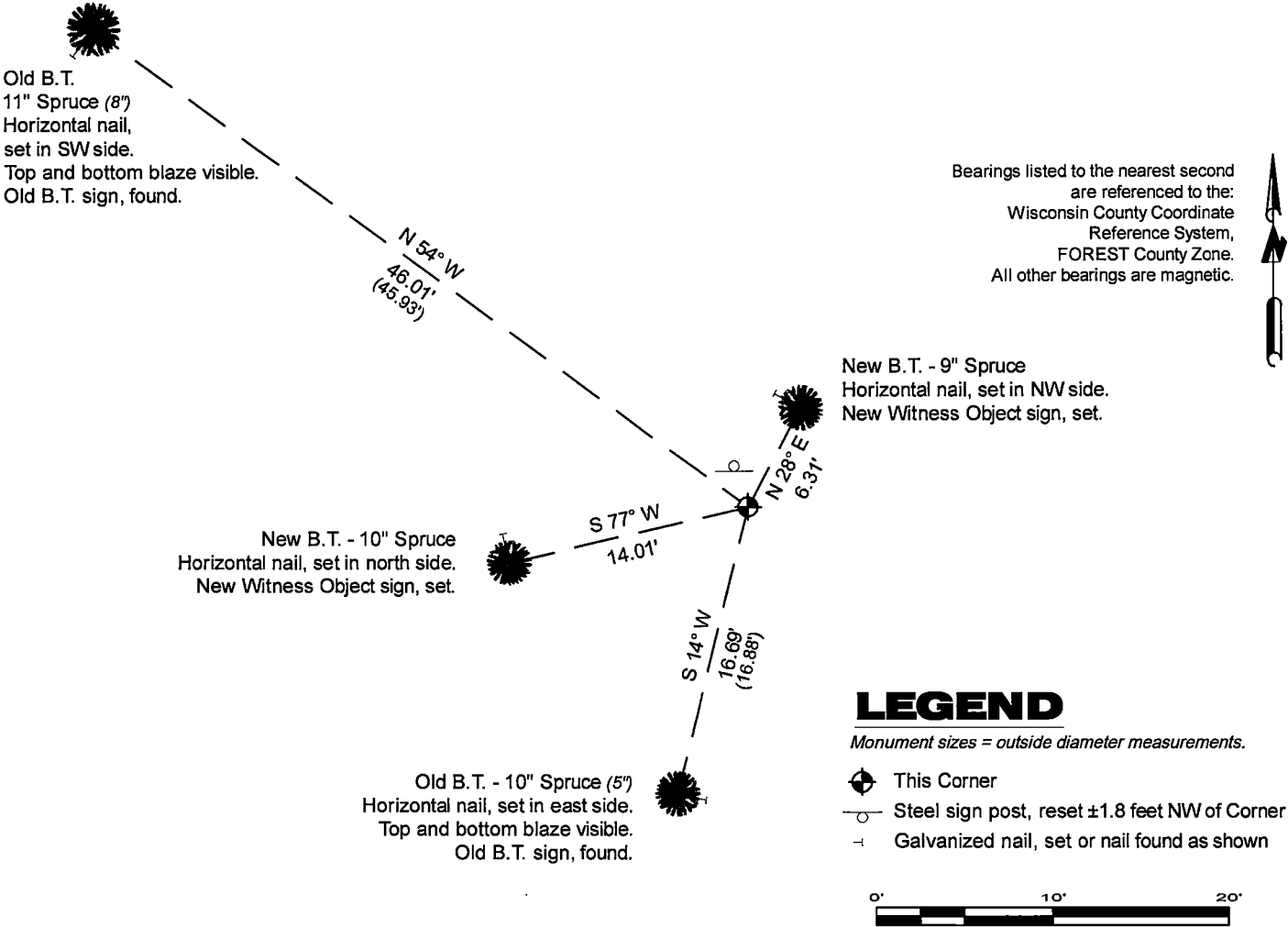
Original Surveyor: Artemas Curtis - June 1858
Tamarac 18 - S 52° W, 65 Links, Tamarac 10 - N 60° W, 25 Links
Cedar 10 - N 24° E, 17 Links, Cedar 14 - S 45° E, 19 Links

See previous U.S. Public Land Survey Monument Record - V-25 - December 30, 1989 - Surveyor 1634 - Gary Lee Pisoni THENCE:

- 1989 - Surveyor 1634 - Gary Lee Pisoni - indicates this position as "2 inch I.D. iron pipe monument with a brass cap" on Forest Co. record Map #401436-19901026 & #401425-19901026.

December 03, 2024 - In performing the 2024 - Forest County - "PLSS Corner Remonumentation and GPS Services" project, I found a 1-7/8" diameter galvanized iron pipe monument with a 2.5" diameter brass cap stamped to identify the corner. The monument is on highland at the edge of Spruce swamp, and extends ±12" above grade. I also found 2 of Crawford's bearing trees alive and in good condition. I established 2 new reference monuments as shown below.

A-E 7.08(3)(c)(d) Plan view of corner with references to at least 4 witness monuments.

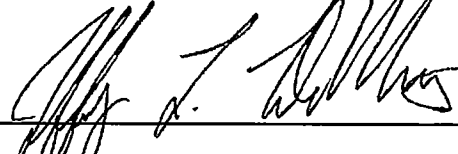


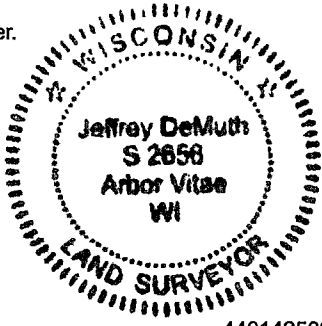
A-E 7.08(3)(e) 1858 Surveyor set a post, 1989 Surveyor found a 2" diameter iron post, with a brass cap stamped to identify corner, 1989 Surveyor found a 2 inch I.D. iron pipe monument with a brass cap. In 2024, I found a 1-7/8" diameter galvanized iron pipe monument with a 2.5" diameter brass cap stamped to identify the corner.

A-E 7.08(3)(f) I accept this monument in good faith as a FOUND PERPETUATED LOCATION of the corner.

A-E 7.08(3)(g)(h) This corner was not determined through lost-corner-proportionate methods.

A-E 7.08(3)(i) I, Jeffrey L. DeMuth, Professional Land Surveyor No. S-2656, hereby certify that the corner location on this record was determined by me or under my direction and control, and that this U.S. Public Land Survey Monument Record is correct and complete to the best of my knowledge, and belief.

SIGNATURE  DATE December 05, 2024



CERTIFIED LAND CORNER RESTORATION

State of Wisconsin }
County of Forest } ss.

I Jean F. Resvick, do hereby certify that on the 13 day of September, 19 76, I found evidence of the Northeast Section corner of Section 36 Township 40 North Range 14 East, Fourth Principal Meridian, as described hereon; and that from this evidence I established a new monument and accessories as described hereon to perpetuate the original location of this corner:

Description of original monument and accessories and subsequent restorations:

Surveyed in 1858 by Artemas Curtis
Dependent resurvey in 1945 by Hugh B. Crawford
From remains of original bearing tree, set iron post, 3 ft. long, 2 ins. diam. 28 ins. in the ground, with brass cap marked: T40N, R14E, R15E, S25, S30 S36, S31, 1945.
Spruce 4, bears N62 3/4E, 55 lks.
Spruce 4, bears S81 3/4E, 34 lks.
Yellow Birch 9, S40 3/4W, 63 lks.
Dead tamarack 12, N62 1/4W, 102 lks.
Description of corner evidence found:

Monument as described
Spruce 8, N63E, 55 lks.
Spruce 8, dead and down, S82E, 34 lks.
Yellow Birch 9, dead and down, S41W, 63 lks.
Dead tamarack, down N67W, 102 lks.

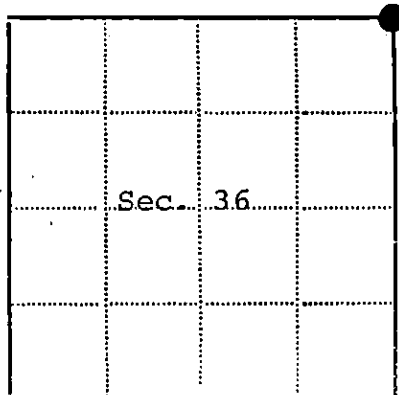
Description of monument and accessories I established to perpetuate the location of this corner:

Blazed and scribed the following new bearing trees:

Spruce 5, S12W, 25 1/2 lks.
Spruce 4, N56W, 70 lks.
Sign post set by monument.



44014 250000



● - Corner monument restored
□ -

Resident witnesses.....

Dated at Rhineland Wisconsin, this 22 day of September 19 76..

Signature Jean F. Resvick Title Land Surveyor
(County Surveyor, Registered Land Surveyor, or other duly authorized official)

Surveyors Registration No. S-802 DOCUMENT No. 110929

Office of Register of Deeds County of Forest

I hereby certify that the within instrument was filed in this office for record on the 31st day of January 19 77., and was filed in Book No. Page No. of County Records.

Signature Eugene Staszny Title Register of Deeds

Township 40 North, Range 14 East, Section 36 Index No. V-25, Page No.

V25

U.S. PUBLIC LAND SURVEY MONUMENT RECORD

Index No. V-25

State of Wisconsin }
County of Forest } ss.

I Gary L. Pisoni, do hereby
certify that on the 27th day
of December, 19 89, I found
evidence of the Northeast section
corner of Section 36
Township 40, North, Range
14 East, Fourth Principal Meridian,
as described hereon; and that from this evidence
I established a new monument and accessories
as described hereon to perpetuate the original
location of this corner.

Resident witnesses:

History of original corner establishment:

Dependent resurvey in 1945 by Hugh B. Crawford; N 0°39'E between Sections
36 and 31, 39.78 chains, corner determined from the remains of original
bearing tree, at the corner position set an iron post 3' long, 2" diameter,
28" in the ground with brass cap marked: T40N, R14E, R15E, S-25, S-30, S-31,
S-36, 1945, from which the following bear:

Spruce 4" N 62 3/4° E	55 links	1976 corner references by Resvick:
Spruce 4" S 81 3/4° E	34 links	Spruce 5" S 12° W 25 1/2 links
Yellow Birch 9" S 40 3/4° W	63 links	Spruce 4" N 56° W 70 links

Description of corner evidence found:

Found monument as described above.

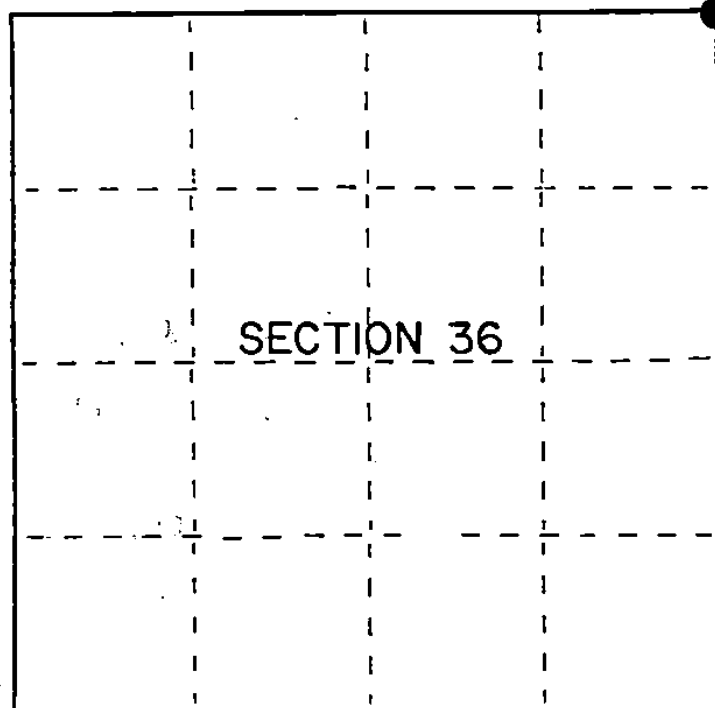
Corner references found:

Spruce 5"	S 14° W	16.88 feet
Spruce 8"	N 54° W	45.93 feet

Description of monument and accessories I established to perpetuate the original location of this corner.

Blazed and scribed the following new bearing trees: (measurements taken to
a nail in side of tree)

Balsam 9"	N 79° E	18.12 feet
Steel sign post	S 50° W	2.45 feet



● = Corner monument restored.

Dated at Iron River, MI, Wis., this 30th day of December, 19 89

Signature Gary L. Pisoni Title Land Surveyor Registration No. S-1634
(County Surveyor, Registered Land Surveyor, or other duly authorized official)

Office of Register of Deeds, County of Forest, I hereby certify that the within
instrument was filed in this office for record on the 20th day of September, 19 90
at 10:45 o'clock A. M.

(Register of Deeds)

By Mark Chitko Deputy

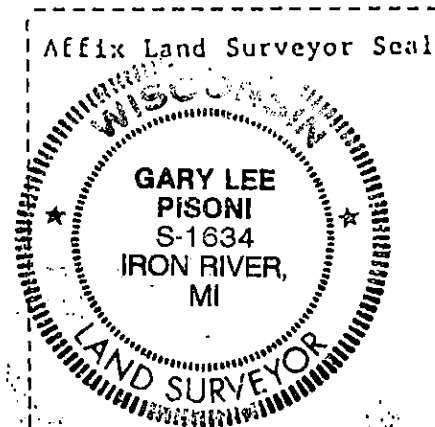
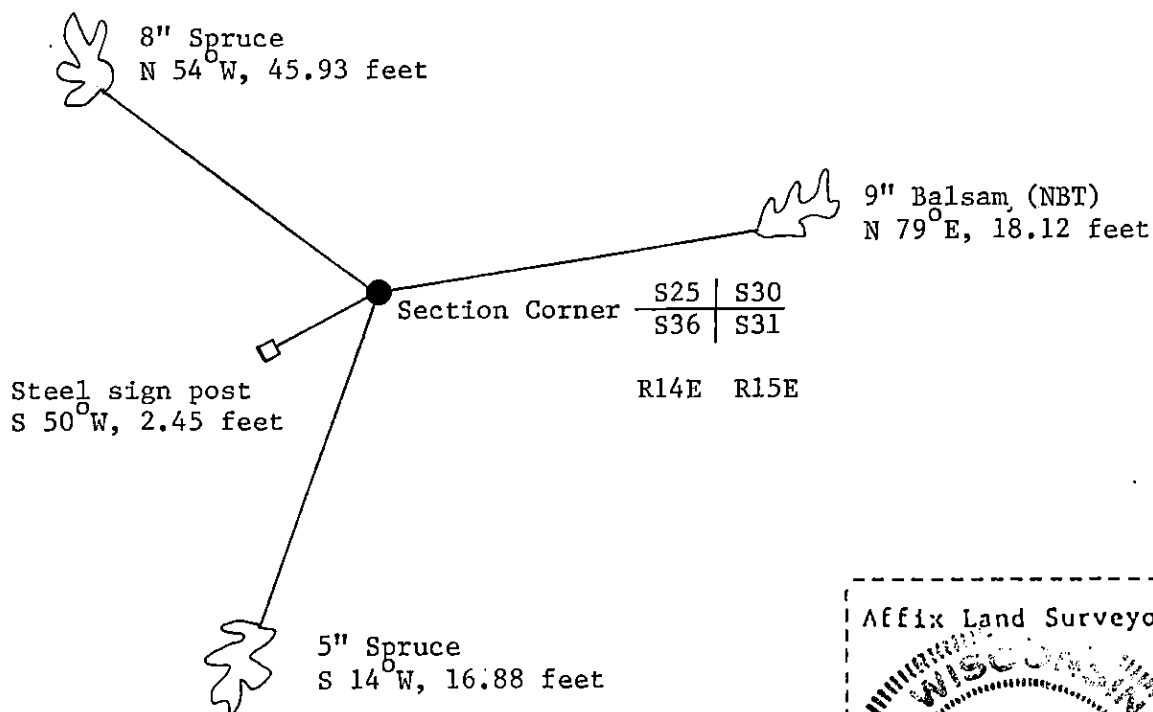
- (d) Describe any material discrepancy between the location of the corner as restored or reestablished and the location of that corner as previously restored or reestablished by distance and direction. Show the discrepancy on the plan view drawing under (d), above. Show the distances between the corner as previously restored or reestablished and (1) the corner as restored or reestablished, and (2) to at least 2 of the witness monuments shown on the drawing in (d), above.

See drawing below.

- (f) Was the corner restored through acceptance of (1) an obliterated evidence location, or, (2) a found perpetuated location?

Restored through acceptance of a found perpetuated location.

- (g&h) Was the corner reestablished through lost corner proportionate methods? If so, show the method, including the directions and distances to other public land survey corners used as evidence or used for proportioning in determining the corner location?



- (i) I, Gary L. Pisoni
 (type or print name) certify that the corner location shown on this record was determined by me or under my direction and control and that this U.S. Public Land Survey Monument Record is correct and complete to the best of my knowledge and belief.

Signature

Date

Survey requested by;

District Ranger

Date