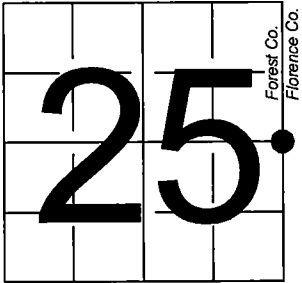


U. S. PUBLIC LAND SURVEY MONUMENT RECORD

NOTE: This form is intended and designed to fulfill all requirements of Wisconsin Administrative Code, Chapter A-E 7.08 U.S. Public Land Survey Monument Record (3) (a-i)

A-E 7.08(3)(a) Identity of corner:
East 1/4 Corner Section 25,
Township 40 North, Range 14 East
of the Fourth Principal Meridian,
Town of Alvin, Forest County,
Wisconsin

WISCRS - FOREST COUNTY
N: 697,284.657 USft (XXX,XXX.XXX)
E: 894,368.584 USft (XXX,XXX.XXX)
Datum: NAD83 (2011)
GNSS Method RTK
GNSS Control WISCORS VRS



The coordinate value shown has been verified by the average of two or more GPS observations at a markedly different time. Coordinates shown in parenthesis are previously published values.

A-E 7.08(3)(b)

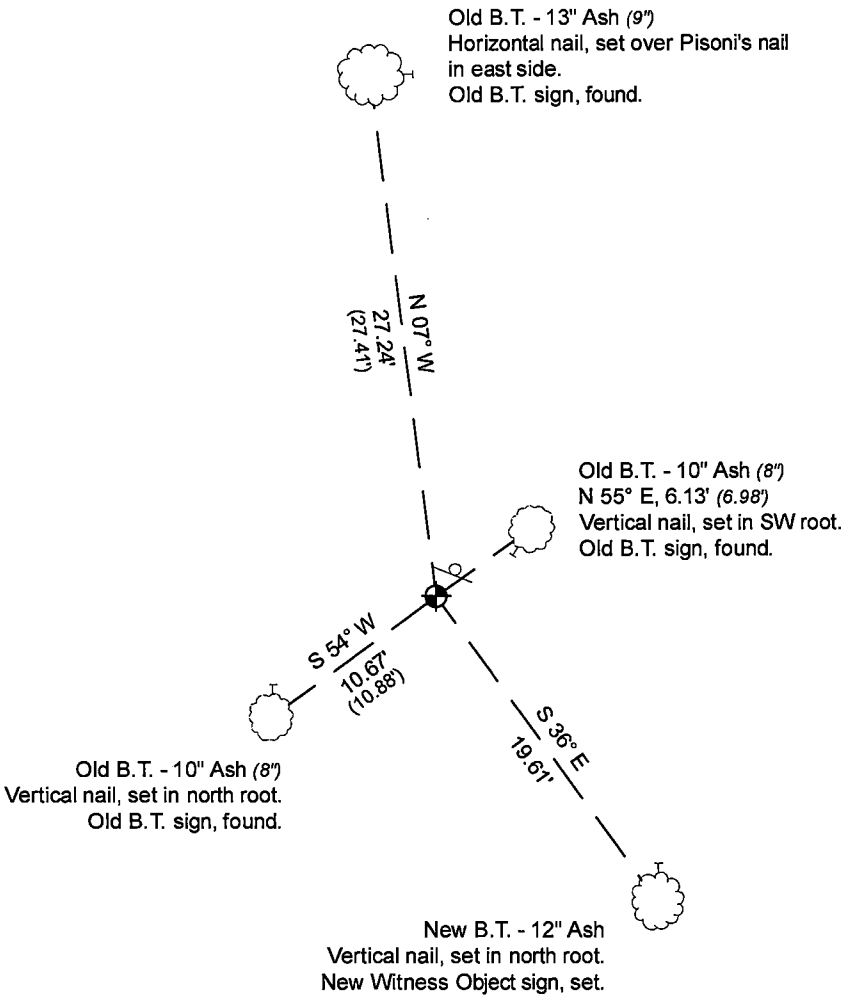
Original Surveyor: Artemas Curtis - June 1858
Sugar 12 - N 76° W, 64 Links, Yellow Birch 14 - N 76° E, 55 Links

See previous U.S. Public Land Survey Monument Record - T-25 - December 30, 1989 - Surveyor 1634 - Gary Lee Pisoni THENCE:

- 1989 - Surveyor 1634 - Gary Lee Pisoni - indicates this position as "2 inch I.D. iron pipe monument with a brass cap" on Forest Co. record Map #401425-19901026.

December 06, 2024 - In performing the 2024 - Forest County - "PLSS Corner Remonumentation and GPS Services" project, I found a 1-7/8" diameter galvanized iron pipe monument with a 2.5" diameter brass cap stamped to identify the corner. The monument is on highland in open hardwoods and extends ±16" above grade. I also found 3 of Pisoni's bearing trees alive and in good condition. I established 1 new reference monuments as shown below.

A-E 7.08(3)(c)(d) Plan view of corner with references to at least 4 witness monuments.

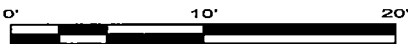


Bearings listed to the nearest second are referenced to the: Wisconsin County Coordinate Reference System, FOREST County Zone. All other bearings are magnetic.

LEGEND

Monument sizes = outside diameter measurements.

- ⊕ This Corner
- Steel sign post, reset ±1 foot NE of Corner
- ⊖ Galvanized nail, set or nail found as shown



A-E 7.08(3)(e) 1858 Surveyor set a post, 1989 Surveyor found a 2" diameter iron post, with a brass cap stamped to identify corner, 1989 Surveyor found a 2 inch I.D. iron pipe monument with a brass cap. In 2024, I found a 1-7/8" diameter galvanized iron pipe monument with a 2.5" diameter brass cap stamped to identify the corner.

A-E 7.08(3)(f) I accept this monument in good faith as a FOUND PERPETUATED LOCATION of the corner.

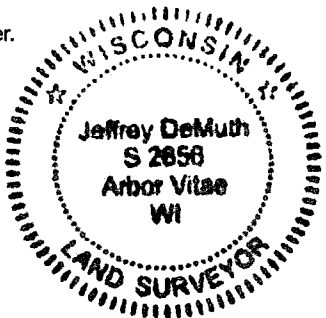
A-E 7.08(3)(g)(h) This corner was not determined through lost-corner-proportionate methods.

A-E 7.08(3)(i) I, Jeffrey L. DeMuth, Professional Land Surveyor No. S-2656, hereby certify that the corner location on this record was determined by me or under my direction and control, and that this U.S. Public Land Survey Monument Record is correct and complete to the best of my knowledge, and belief.

SIGNATURE

December 12, 2024

DATE



44014252000

44014252000

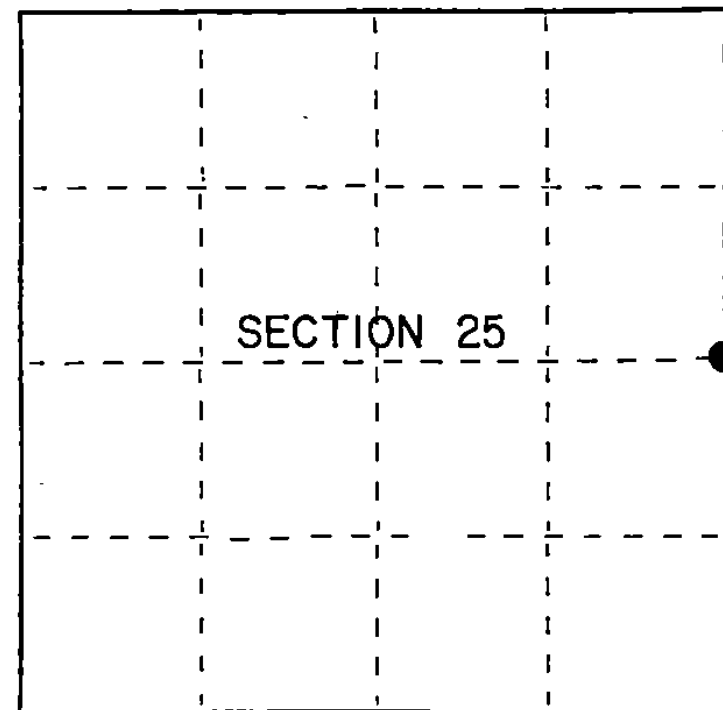
T25

U.S. PUBLIC LAND SURVEY MONUMENT RECORD

Index No. T-25State of Wisconsin }
County of Forest } ss.

I, Gary L. Pisoni, do hereby
certify that on the 29th day
of December, 1989, I found
evidence of the East quarter
corner of Section 25
Township 40, North, Range
14 East, Fourth Principal Meridian,
as described hereon; and that from this evidence
I established a new monument and accessories
as described hereon to perpetuate the original
location of this corner.

Resident witnesses:



● = Corner monument restored.

History of original corner establishment:

Dependent resurvey in 1945 by Hugh B. Crawford; N 0°38'E between Sections 25
and 30, 39.72 chains, corner determined from the remains of original bearing
trees, at the corner position set an iron post 3' long, 2" in diameter, 27"
in the ground with brass cap marked: T40N, R14E, R15E, 1/4, S-25, S-30, 1945,
from which the following bear:

Elm	12"	N 57½° E	42 links
Hemlock	16"	West	57 links

Description of corner evidence found:

Found monument as described above, 1945 bearing trees are all missing.

Description of monument and accessories I established to perpetuate the original location of this corner.

Blazed and scribed the following new bearing trees: (measurement taken to
a nail in side of tree).

Ash	9"	N 07° W	27.41 feet
Ash	8"	N 55° E	6.98 feet
Ash	8"	S 54° W	10.88 feet
Steel sign post		N 61° W	0.9 feet

Dated at Iron River, MI, this 30th day of December, 1989.Signature Gary L. Pisoni Title Land Surveyor Registration No. S-1634
(County Surveyor, Registered Land Surveyor, or other duly authorized official)

Office of Register of Deeds, County of Forest, I hereby certify that the within
instrument was filed in this office for record on the 20th day of September, 1990
at 10:45 o'clock A. M.

(Register of Deeds)

By Sharon Chitto Deputy

440142520000

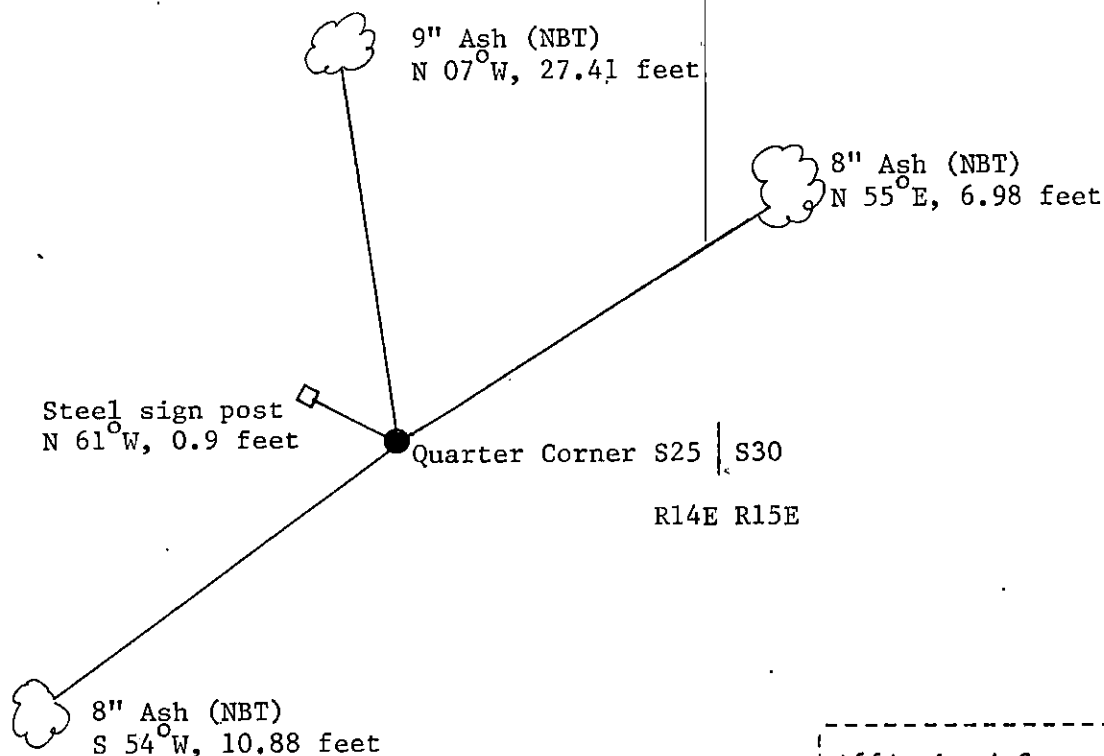
- (e) Describe any material discrepancy between the location of the corner as restored or reestablished and the location of that corner as previously restored or reestablished by distance and direction. Show the discrepancy on the plan view drawing under (d), above. Show the distances between the corner as previously restored or reestablished and (1) the corner as restored or reestablished, and (2) to at least 2 of the witness monuments shown on the drawing in (d), above.

See drawing below

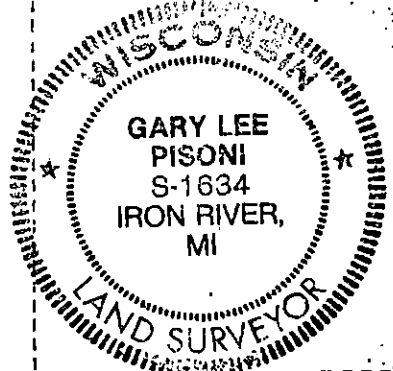
- (f) Was the corner restored through acceptance of (1) an obliterated evidence location, or, (2) a found perpetuated location?

Restored through acceptance of a found perpetuated location.

- (g/h) Was the corner reestablished through lost corner proportionate methods? If so, show the method, including the directions and distances to other public land survey corners used as evidence or used for proportioning in determining the corner location?



Affix Land Surveyor Seal



- (i) I, Gary L. Pisoni
[type or print name] certify that the corner location shown on this record was determined by me or under my direction and control and that this U.S. Public Land Survey Monument Record is correct and complete to the best of my knowledge and belief.

Signature Gary L. Pisoni Date Jan 12 1990

Survey requested by: Edward J. Gager Date 9-18-90
District Ranger