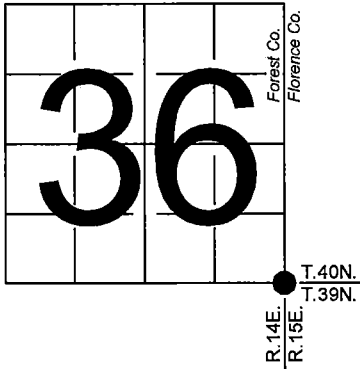


U. S. PUBLIC LAND SURVEY MONUMENT RECORD

NOTE: This form is intended and designed to fulfill all requirements of Wisconsin Administrative Code, Chapter A-E 7.08 U.S. Public Land Survey Monument Record (3) (a-i)

A-E 7.08(3)(a) Identity of corner:
Southeast Corner Section 36,
Township 40 North, Range 14 East
of the Fourth Principal Meridian,
Town of Alvin, Forest County,
Wisconsin

WISCRS - FOREST COUNTY
N: 689,422.529 USft (XXX,XXX.XXX)
E: 894,287.956 USft (XXX,XXX.XXX)
Datum: NAD83 (2011)
GNSS Method RTK
GNSS Control WISCORS VRS



The coordinate value shown has been verified by the average of two or more GPS observations at a markedly different time. Coordinates shown in parenthesis are previously published values.

A-E 7.08(3)(b)

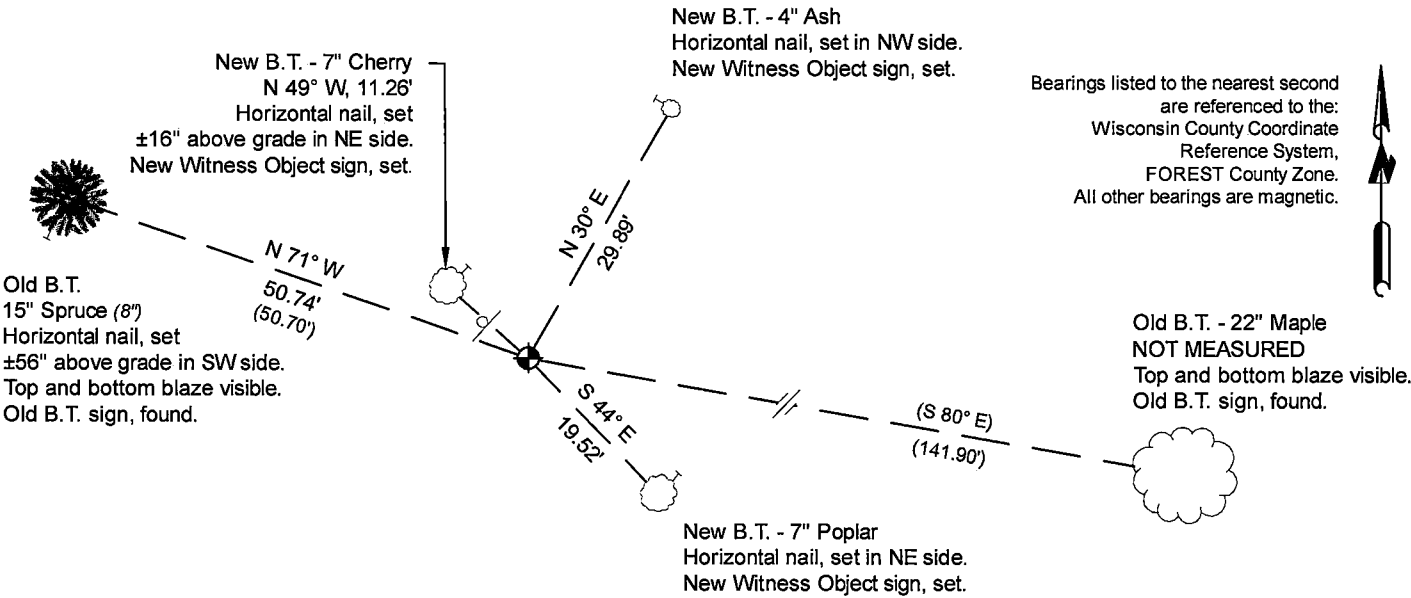
Original Surveyor: Artemas Curtis - May 1858
Hemlock 22 - S 42° W, 29 Links, Hemlock 16 - N 42° W, 22 Links
Cedar 10 - N 58° E, 50 Links, Cedar 15 - S 73° E, 31 Links

See previous U.S. Public Land Survey Monument Record - Z-25 - February 27, 1986 - Surveyor 1107 - William B. Cochrane THENCE:

- 1988 - Surveyor 1107 - William B. Cochrane - indicates this position as "6 inch diameter concrete monument set by dependent resurvey" on Forest Co. record Map #391401-19890504.

December 03, 2024 - In performing the 2024 - Forest County - "PLSS Corner Remonumentation and GPS Services" project, I found a 5" diameter concrete monument with a 2.5" diameter brass cap stamped to identify the corner. The monument is on highland and extends ±10" above grade. I also found 1 of Cochrane's bearing trees, and 1 of Crawford's bearing trees alive and in good condition. I established 3 new reference monuments as shown below.

A-E 7.08(3)(c)(d) Plan view of corner with references to at least 4 witness monuments.

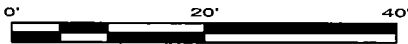


Bearings listed to the nearest second are referenced to the: Wisconsin County Coordinate Reference System, FOREST County Zone. All other bearings are magnetic.

LEGEND

Monument sizes = outside diameter measurements.

- ⊕ This Corner
- Steel sign post, found ±2.6 feet NW of Corner
- Galvanized nail, set or nail found as shown



A-E 7.08(3)(e) 1857 Surveyor set a post, 1986 Surveyor found a 5" diameter concrete monument, with a brass cap stamped to identify corner, 1988 Surveyor found a 6" diameter concrete monument. In 2024, I found a 5" diameter concrete monument with a 2.5" diameter brass cap stamped to identify the corner.

A-E 7.08(3)(f) I accept this monument in good faith as a FOUND PERPETUATED LOCATION of the corner.

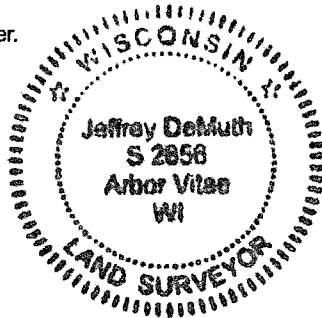
A-E 7.08(3)(g)(h) This corner was not determined through lost-corner-proportionate methods.

A-E 7.08(3)(i) I, Jeffrey L. DeMuth, Professional Land Surveyor No. S-2656, hereby certify that the corner location on this record was determined by me or under my direction and control, and that this U.S. Public Land Survey Monument Record is correct and complete to the best of my knowledge, and belief.

SIGNATURE

December 4, 2024

DATE



44014360000

44014360000

Z25

U.S. PUBLIC LAND SURVEY MONUMENT RECORD

Index No. Z-25

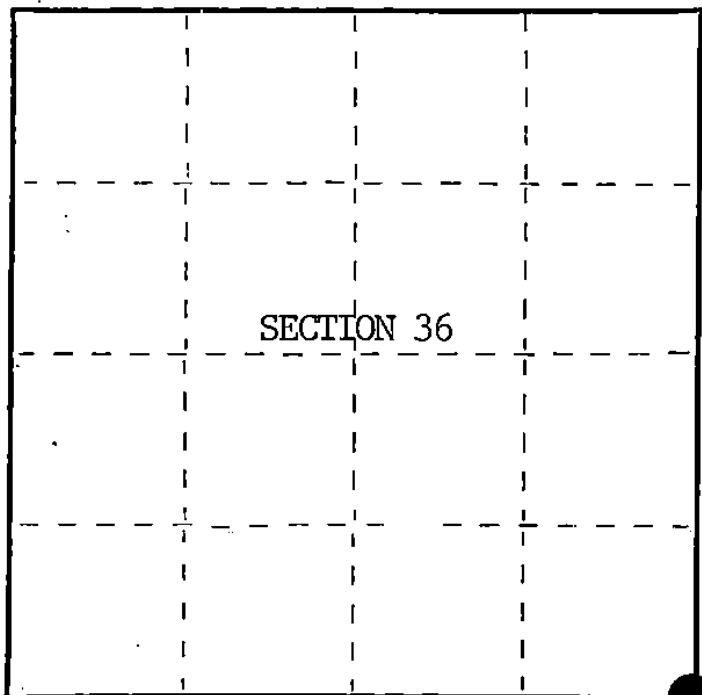
State of Wisconsin }
County of Forest } ss.

I, William B. Cochrane, do hereby
certify that on the 22nd day
of August, 1985, I found
evidence of the Southeast Section
corner of Section 36
Township 40, North, Range
14 East, Fourth Principal Meridian,
as described hereon; and that from this evidence
I established a new monument and accessories
as described hereon to perpetuate the original
location of this corner.

Resident witnesses:

Tony Tillman

State Plane Co-ordinates
N- 268,883.4340
E- 2,337,278.9490



○ = Corner monument restored.

History of original corner establishment:

Original Government Survey in 1858 by Artemas Curtis. Dependent Resurvey in 1945 by Hugh Crawford. From the remains of an original bearing tree, set a concrete monument, 3 feet long, 5 ins. diam., 28 ins. in the ground, with a brass cap mkd; T40N, R14E, R15E, S1, S6, S31, S36, T39N, 1945. From which the following bear;

Poplar	5"	N30°30'E	58 lks.
Maple	12"	S80°00'E	215½lks.
W. Pine	16"	S55°15'W	84½lks.
Spruce	8"	N82°45'W	90 lks.

Description of corner evidence found:

Found monument as described and in place, from which the following bear;

- Poplar	14"	N30°30"E	38.28 feet
Maple	22"	S80°00'E	141.90 feet
W. Pine (Stump)		S55°15'W	55.44 feet
Spruce (Stump)		N82°45'W	59.40 feet
Steel Sign Post		South	0.50 feet

Description of monument and accessories I established to perpetuate the original location of this corner.

Blazed and scribed the following new bearing trees;

Spruce	15"	S59°W	67.45 feet
Spruce	8"	N71°W	50.70 feet

Dated at Hiles, Wis., this 27th day of February, 1986

Signature William B. Cochrane Title Land Surveyor Registration No. S-1107
(County Surveyor, Registered Land Surveyor, or other duly authorized official)

Office of Register of Deeds, County of Forest, I hereby certify that the within
instrument was filed in this office for record on the 11th day of March, 1987
at 3:30 o'clock P. M.

Paul Aschenbrenner
(Register of Deeds)

By _____ Deputy

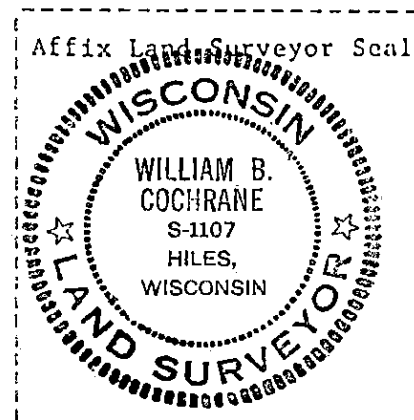
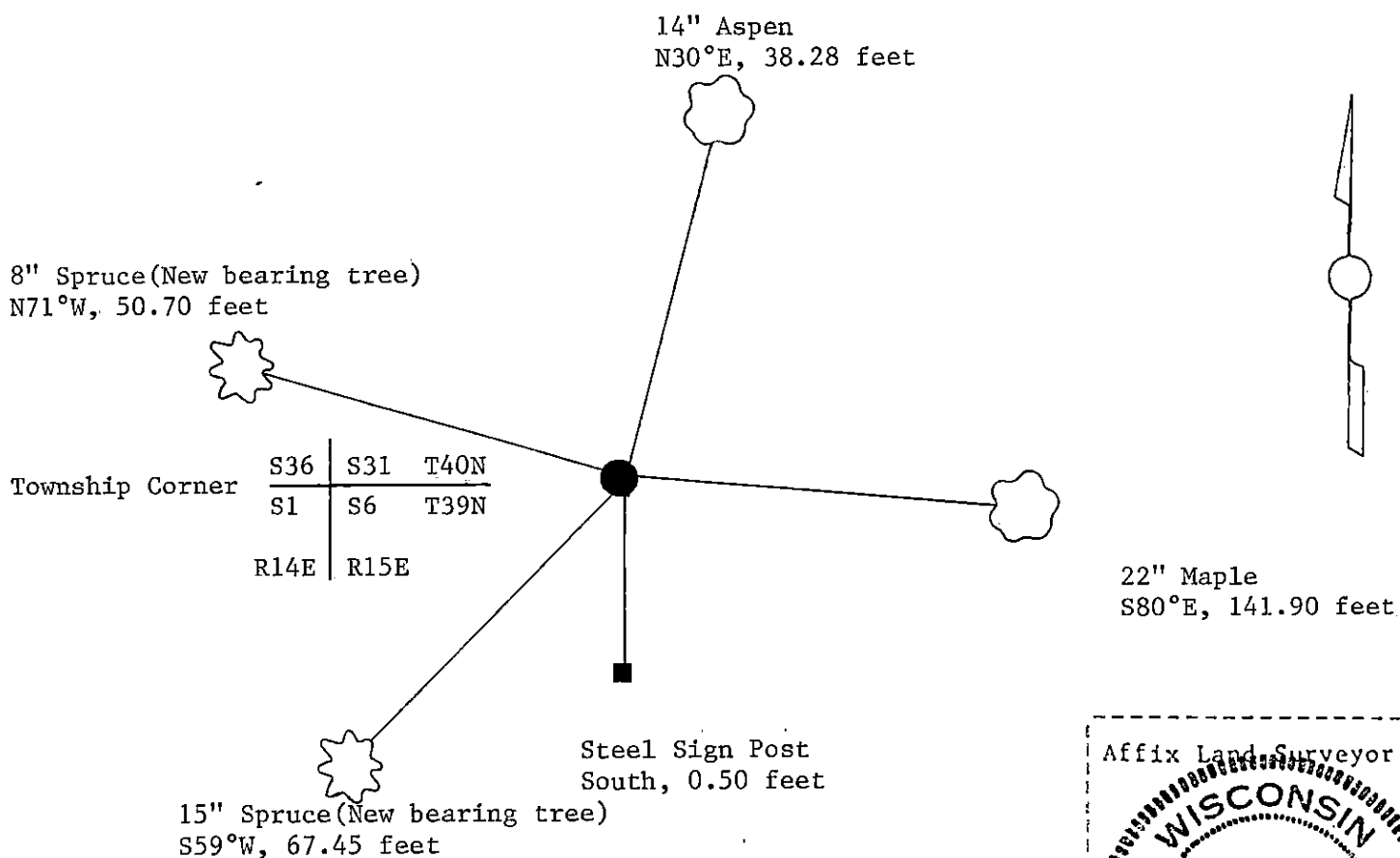
(e) Describe any material discrepancy between the location of the corner as restored or reestablished and the location of that corner as previously restored or reestablished by distance and direction. Show the discrepancy on the plan view drawing under (d), above. Show the distances between the corner as previously restored or reestablished and (1) the corner as restored or reestablished, and (2) to at least 2 of the witness monuments shown on the drawing in (d), above.

See drawing below.

(f) Was the corner restored through acceptance of (1) an obliterated evidence location, or, (2) a found perpetuated location?

Restored through acceptance of a found perpetuated location.

(g&h) Was the corner reestablished through lost corner proportionate methods? If so, show the method, including the directions and distances to other public land survey corners used as evidence or used for proportioning in determining the corner location?



(i) I, William B. Cochrane
(type or print name) certify that the corner location shown on this record was determined by me or under my direction and control and that this U.S. Public Land Survey Monument Record is correct and complete to the best of my knowledge and belief.

William B. Cochrane October 7, 1986
Signature Date

Survey requested by; Edward Lange 3-9-87
District Ranger Date

Stock No. 26273

Document Number 132316

U.S. PUBLIC LAND SURVEY MONUMENT RECORD

Index No. A-25

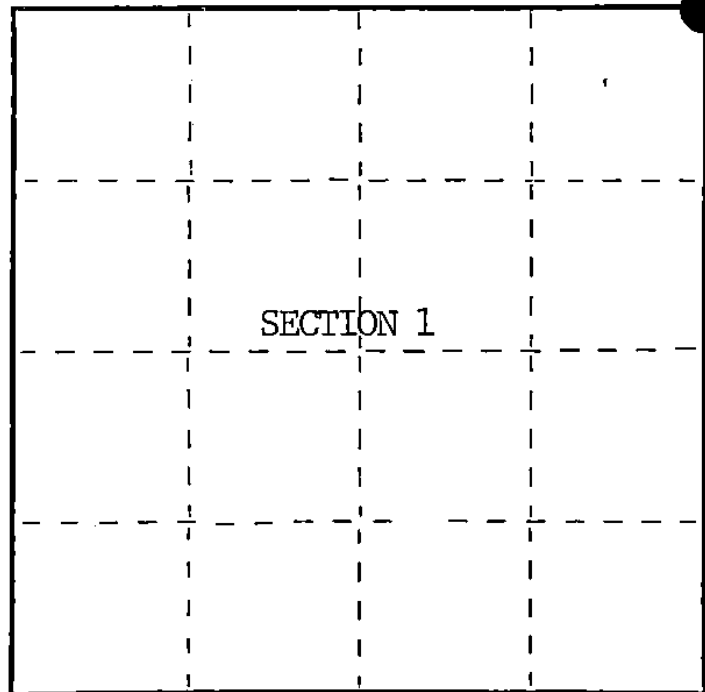
State of Wisconsin }
County of Forest } ss.

I, William B. Cochrane, do hereby
certify that on the 22nd day
of August, 1985, I found
evidence of the Northeast Section
corner of Section 1
Township 39, North, Range
14 East, Fourth Principal Meridian,
as described hereon; and that from this evidence
I established a new monument and accessories
as described hereon to perpetuate the original
location of this corner.

Resident witnesses:

Tony Tillman

State Plane Co-ordinates
N- 268,883.4340
E-2,337,278.9490



○ = Corner monument restored.

History of original corner establishment:

Original Government Survey in 1858 by Artemas Curtis. Dependent Resurvey in 1945
by Hugh Crawford. From the remains of an original bearing tree, set a concrete monument
3 feet long, 5 ins. diam., 28 ins. in the ground, with a brass cap mkd; T40N, R14E, R15E,
S1, S6, S31, S36, T39N, 1945. From which the following bear;

Poplar	5"	N30°30'E	58 lks.
Maple	12"	S80°00'E	215½ lks.
W. Pine	16"	S55°15'W	84½ lks.
Spruce	8"	N82°45'W	90 lks.

Description of corner evidence found:

Found monument as described and in place, from which the following bear;

Aspen	14"	N30°30'E	38.28 feet
Maple	22"	S80°00'E	141.90 feet
W. Pine (Stump)		S55°15'W	55.44 feet
Spruce (Stump)		N82°45'W	59.40 feet
Steel Sign Post		South	0.50 feet

Description of monument and accessories I established to perpetuate the original location of this corner.

Blazed and scribed the following new bearing trees;

Spruce	15"	S59°W	67.45 feet
Spruce	8"	N71°W	50.70 feet

Dated at Hiles, Wis., this 27th day of February, 1986

Signature William B. Cochrane Title Land Surveyor Registration No. S-1107
(County Surveyor, Registered Land Surveyor, or other duly authorized official)

Office of Register of Deeds, County of Forest
I hereby certify that the within
instrument was filed in this office for record on the 11th day of March, 1987
at 3:30 o'clock P. M.

Paul Aschenbrenner
(Register of Deeds)

By Deputy

44014360000

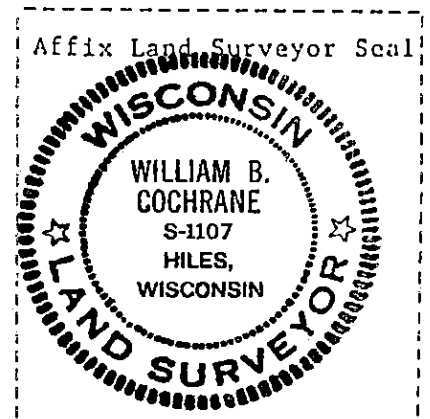
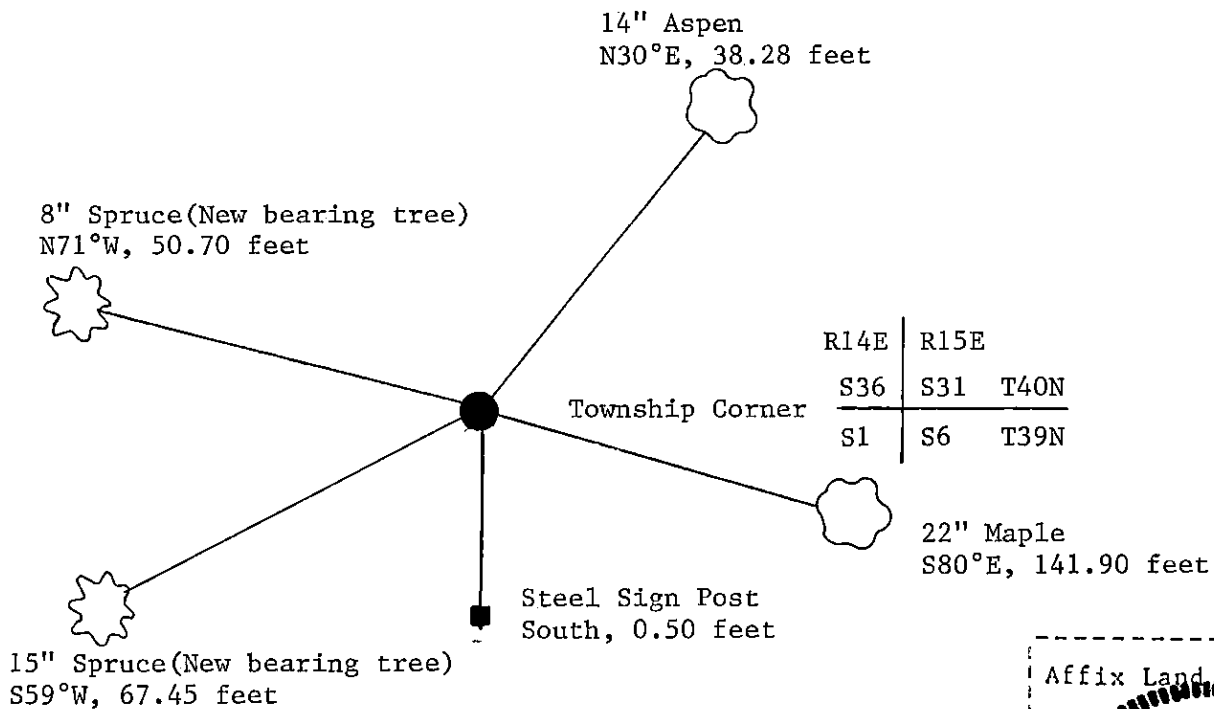
- (e) Describe any material discrepancy between the location of the corner as restored or reestablished and the location of that corner as previously restored or reestablished by distance and direction. Show the discrepancy on the plan view drawing under (d), above. Show the distances between the corner as previously restored or reestablished and (1) the corner as restored or reestablished, and (2) to at least 2 of the witness monuments shown on the drawing in (d), above.

See drawing below.

- (f) Was the corner restored through acceptance of (1) an obliterated evidence location, or, (2) a found perpetuated location?

Restored through acceptance of a found perpetuated location.

- (g&h) Was the corner reestablished through lost corner proportionate methods? If so, show the method, including the directions and distances to other public land survey corners used as evidence or used for proportioning in determining the corner location?



- (i) I, William B. Cochrane
(type or print name) certify that the corner location shown
on this record was determined by me or under my direction and
control and that this U.S. Public Land Survey Monument Record is
correct and complete to the best of my knowledge and belief.

William B. Cochrane October 7, 1986
Signature Date

Survey requested by: Edward J. [Signature] 3-7-81
District Ranger Date

District Ranger

Date _____