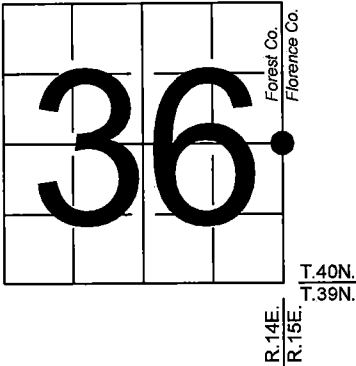


U. S. PUBLIC LAND SURVEY MONUMENT RECORD

NOTE: This form is intended and designed to fulfill all requirements of Wisconsin Administrative Code, Chapter A-E 7.08 U.S. Public Land Survey Monument Record (3) (a-i)

A-E 7.08(3)(a) Identity of corner:
East 1/4 Corner Section 36,
Township 40 North, Range 14 East
of the Fourth Principal Meridian,
Town of Alvin, Forest County,
Wisconsin

WISCRS - FOREST COUNTY
N: 692,040.870 USft (XXX,XXX.XXX)
E: 894,308.406 USft (XXX,XXX.XXX)
Datum: NAD83 (2011)
GNSS Method RTK
GNSS Control WISCORS VRS



The coordinate value shown has been verified by the average of two or more GPS observations at a markedly different time. Coordinates shown in parenthesis are previously published values.

A-E 7.08(3)(b)

Original Surveyor: Artemas Curtis - June 1858
Cedar 14 - N 32° W, 29 Links, Yellow Birch 14 - S 24° E, 5 Links

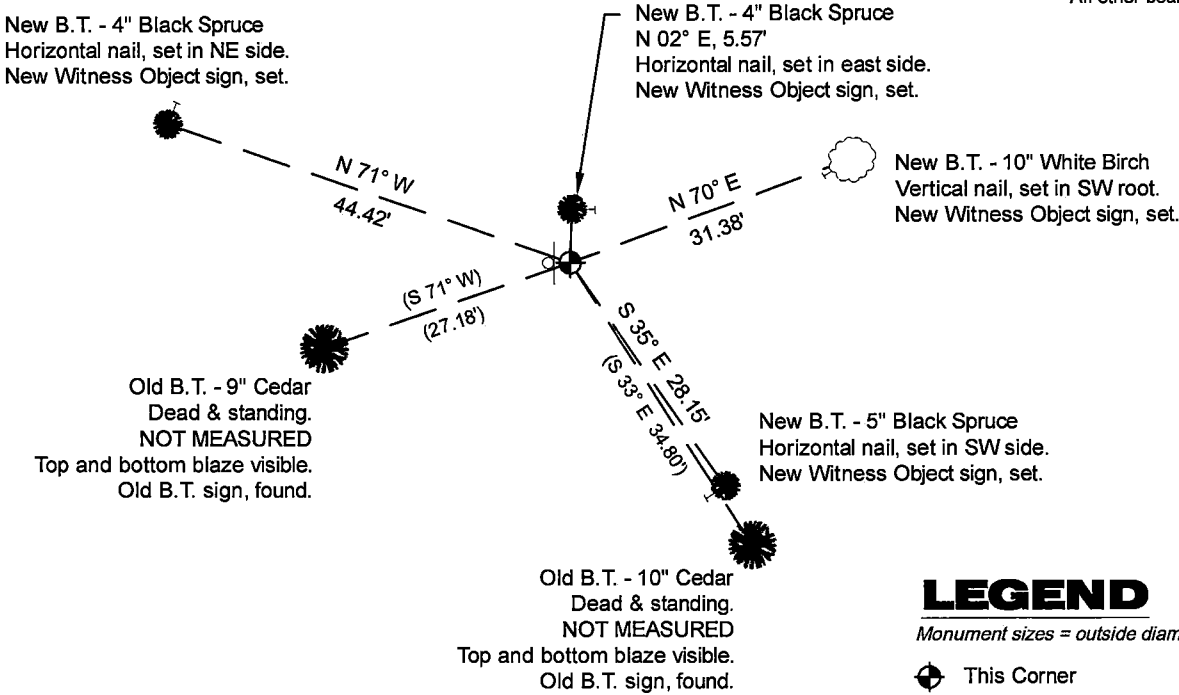
See previous U.S. Public Land Survey Monument Record - X-25 - December 30, 1989 - Surveyor 1634 - Gary Lee Pisoni THENCE:

- May 24, 1991 - Surveyor 1634 - Gary Lee Pisoni - indicates this position as "aluminum capped pipe monument - U.S.F.S." on Florence Co. record Map #M0662.

December 03, 2024 - In performing the 2024 - Forest County - "PLSS Corner Remonumentation and GPS Services" project, I found a 2.4" diameter aluminum pipe monument with a 3.25" diameter aluminum cap stamped to identify the corner. The monument is in a spruce marsh and extends ±16" above grade. I also found 2 of Crawford's bearing trees dead and standing. I established 4 new reference monuments as shown below.

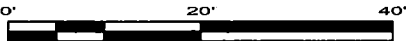
A-E 7.08(3)(c)(d) Plan view of corner with references to at least 4 witness monuments.

Bearings listed to the nearest second are referenced to the: Wisconsin County Coordinate Reference System, FOREST County Zone. All other bearings are magnetic.



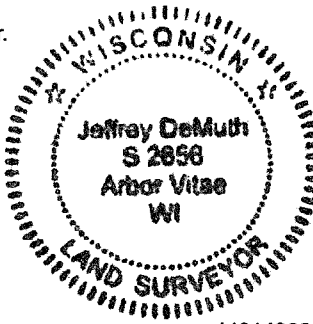
LEGEND
Monument sizes = outside diameter measurements.

- This Corner
- Steel sign post, found at west side of Corner
- Galvanized nail, set or nail found as shown



A-E 7.08(3)(e) 1858 Surveyor set a post, 1989 Surveyor set a 2 1/2" diameter aluminum pipe monument, with an aluminum cap stamped to identify corner, 1991 Surveyor found an aluminum capped pipe monument. In 2024, I found a 2.4" diameter aluminum pipe monument with a 3.25" diameter aluminum cap stamped to identify the corner.
A-E 7.08(3)(f) I accept this monument in good faith as a FOUND PERPETUATED LOCATION of the corner.
A-E 7.08(3)(g)(h) This corner was not determined through lost-corner-proportionate methods.

A-E 7.08(3)(i) I, Jeffrey L. DeMuth, Professional Land Surveyor No. S-2656, hereby certify that the corner location on this record was determined by me or under my direction and control, and that this U.S. Public Land Survey Monument Record is correct and complete to the best of my knowledge, and belief.



SIGNATURE DATE December 05, 2024

CERTIFIED LAND CORNER RESTORATION

State of Wisconsin }
County of Forest } ss.

I Jean F. Resvick, do hereby certify that on the 13 day of September, 19 76, I found evidence of the East Quarter corner of Section 36 Township 40 North, Range 14 East, Fourth Principal Meridian, as described hereon; and that from this evidence I established a new monument and accessories as described hereon to perpetuate the original location of this corner:

Description of original monument and accessories and subsequent restorations:

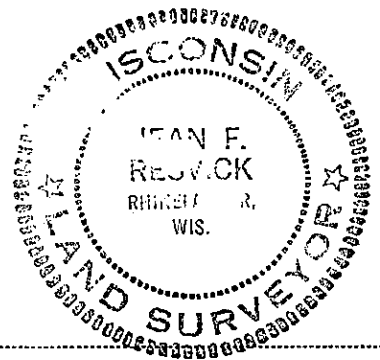
Surveyed in 1858 by Artemas Curtis
Dependent resurvey in 1945 by Hugh B. Crawford
From remains of original bearing trees, set a concrete monument 3 ft. long 4 ins. diam., 28 ins. in the ground, with brass cap marked 1/4, S36, S31, 1945
Cedar 4, bears S35E, 53 lks.
Cedar 4, bears S71 1/2 W, 41 lks.

Description of corner evidence found:

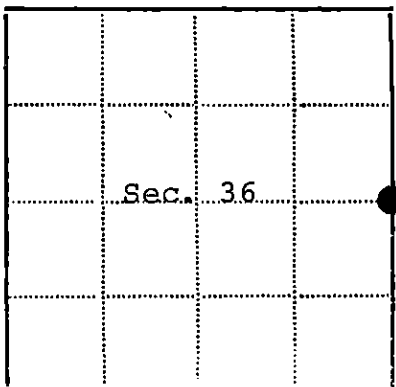
Monument as described. Frost heaved and leaning.
Yellow Birch stump S24E, 5 lks., original
Cedar 7, S35E, 53 lks.
Cedar 7, S71 1/2W, 41 lks.

Description of monument and accessories I established to perpetuate the location of this corner:

Reset monument and tamped monument, place bearing tree signs.
Set steel sign post southwest side of monument.



44014362000



● - Corner monument restored
□ -

Resident witnesses.....

Dated at Rhineland Wisconsin, this 22 day of September 19 76.

Signature Jean F. Resvick Title Land Surveyor
(County Surveyor, Registered Land Surveyor, or other duly authorized official)

Surveyors Registration No. S-802 DOCUMENT Number 110930

Office of Register of Deeds County of Forest

I hereby certify that the within instrument was filed in this office for record on the 31st day of January 19 77, and was filed in Book No. Page No. of County Records.

Signature Eugene Staszny Title Register of Deeds

Township 40 North, Range 14 East, Section 36, Index No. X-25, Page No.

X25

Stock No. 26273

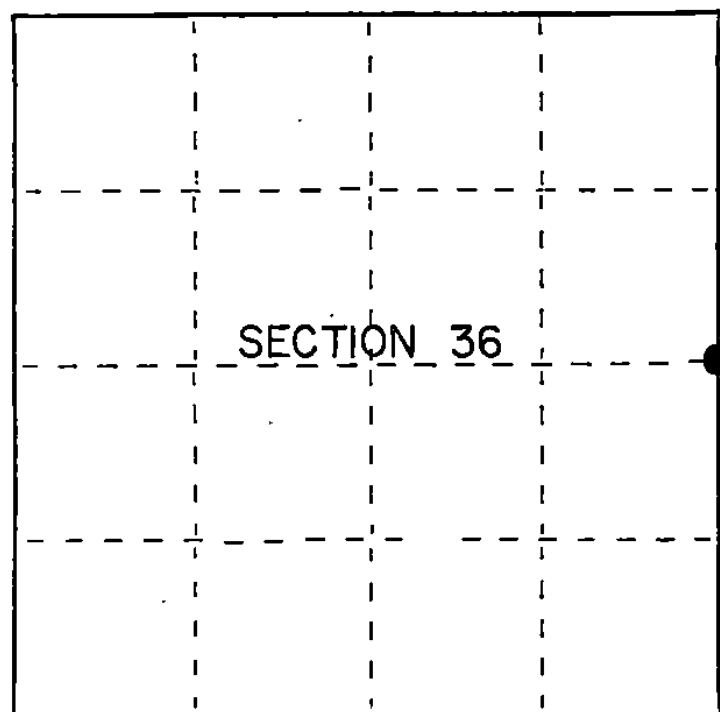
DOCUMENT NUMBER
140502

U.S. PUBLIC LAND SURVEY MONUMENT RECORD

Index No. X-25State of Wisconsin }
County of Forest } ss.

I, Gary L. Pisoni, do hereby
 certify that on the 30th day
 of December, 1989, I found
 evidence of the East quarter
 corner of Section 36
Township 40, North, Range
14 East, Fourth Principal Meridian,
 as described hereon; and that from this evidence
 I established a new monument and accessories
 as described hereon to perpetuate the original
 location of this corner.

Resident witnesses:



● = Corner monument restored.

History of original corner establishment:

Dependent resurvey in 1945 by Hugh B. Crawford; N 0°25'E between Sections 36 and 31, 39.70 chains, corner determined from the remains of original bearing trees, at the corner position set a concrete monument, 3' long, 4" diameter, 28" in the ground with an iron post 3' long, 1" diameter, embedded in center with brass cap marked: T40N, R14E, R15E, 1/4, S-36, S-31, 1945 from which the following bear: Cedar 4" S 35° E 34.98 feet Cedar 4" S 71½° W 27.06 feet
 In 1976, Jean Resvick, U.S.F.S., found monument as described above and found same corner references as 1945.

Description of corner evidence found:

Found monument as described above, but laying on its side and broken apart.

Monument located in 2 feet of water, in a flooded swamp.

Corner references found;

Cedar	10"	S 33° E	34.80 feet
Cedar	9"	S 71° W	27.18 feet

Description of monument and accessories I established to perpetuate the original location of this corner.

Replaced damaged monument with a 2½" diameter aluminum pipe monument, 5' long 8" above water surface with an aluminum cap stamped: T40N, R14E, R15E, 1/4, S-36, S-31, 1989, S-1634 from which the following new blazed and scribed bearing trees bear, all measurement taken to a nail in side of tree:

Spruce	11"	N 41° E	44.91 feet
Spruce	10"	N 15° W	42.18 feet
Steel sign post		N 62° W	0.3 feet

Dated at Iron River, MI, this 30th day of December, 1989.

Signature Gary L. Pisoni Title Land Surveyor Registration No. S-1634
 (County Surveyor, Registered Land Surveyor, or other duly authorized official)

Office of Register of Deeds, County of Forest, I hereby certify that the within instrument was filed in this office for record on the 20th day of September, 1990 at 10:45 o'clock A. M.

(Register of Deeds)

By Shel Chitko Deputy

44014362000

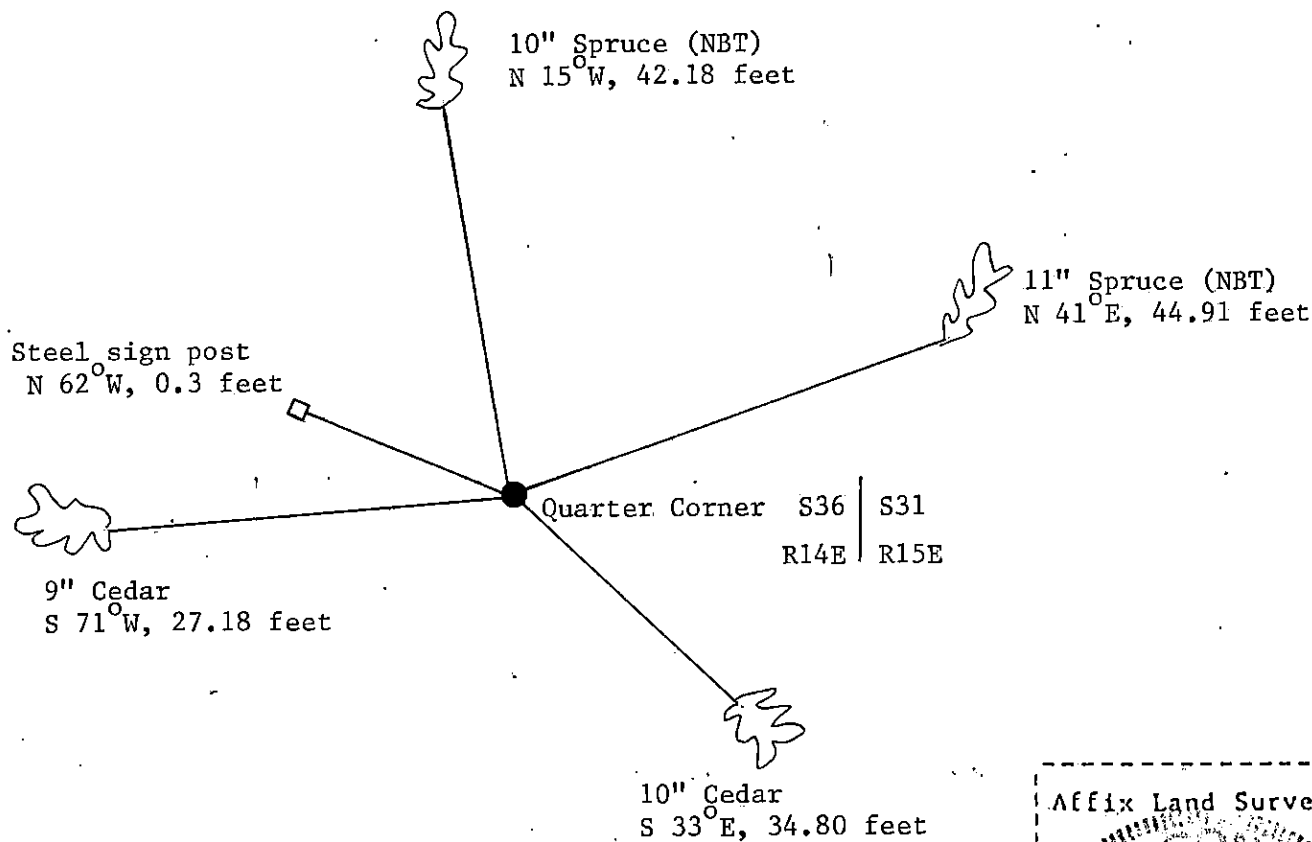
- (e) Describe any material discrepancy between the location of the corner as restored or reestablished and the location of that corner as previously restored or reestablished by distance and direction. Show the discrepancy on the plan view drawing under (d), above. Show the distances between the corner as previously restored or reestablished and (1) the corner as restored or reestablished, and (2) to at least 2 of the witness monuments shown on the drawing in (d), above.

See drawing below

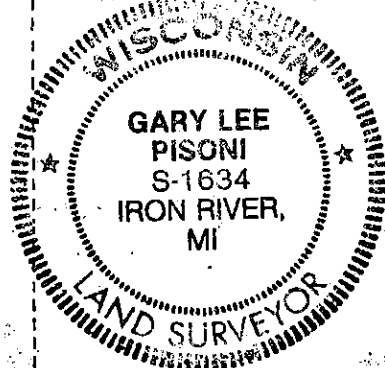
- (f) Was the corner restored through acceptance of (1) an obliterated evidence location, or, (2) a found perpetuated location?

Restored through acceptance of a found perpetuated location.

- (g&h) Was the corner reestablished through lost corner proportionate methods? If so, show the method, including the directions and distances to other public land survey corners used as evidence or used for proportioning in determining the corner location?



Affix Land Surveyor Seal



(i) Gary L. Pisoni

(Type or print name) certify that the corner location shown on this record was determined by me or under my direction and control and that this U.S. Public Land Survey Monument Record is correct and complete to the best of my knowledge and belief.

Signature

Date

Survey requested by:

District Ranger

Date