

CORTNEY BRITTEN CLEEREMAN
REGISTER OF DEEDS
FOREST COUNTY WI
PAGES: 1

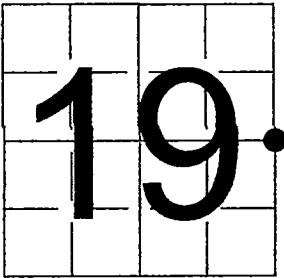
INDEX#: P5

U. S. PUBLIC LAND SURVEY MONUMENT RECORD - ADDENDUM

NOTE: This form is intended and designed to fulfill all requirements of Wisconsin Administrative Code, Chapter A-E 7.08 U.S. Public Land Survey Monument Record (3) (a-i)

A-E 7.08(3)(a) Identity of corner:
EAST 1/4 CORNER SECTION 19,
TOWNSHIP 41 NORTH,
RANGE 14 EAST OF THE 4TH PM,
TOWN OF ALVIN, COUNTY OF FOREST

WISCORS - FOREST COUNTY
N: 733,971.0992 USft (XXX,XXX.XXX)
E: 865,116.0075 USft (XXX,XXX.XXX)
Datum: NAD83 (2011)
GNSS Method RTK
GNSS Control WISCORS VRS



The coordinate value shown has been verified by the average of two or more GPS observations at a markedly different time. Coordinates shown in parenthesis are previously published values.

A-E 7.08(3)(b)

Original Surveyor: William E. Daugherty

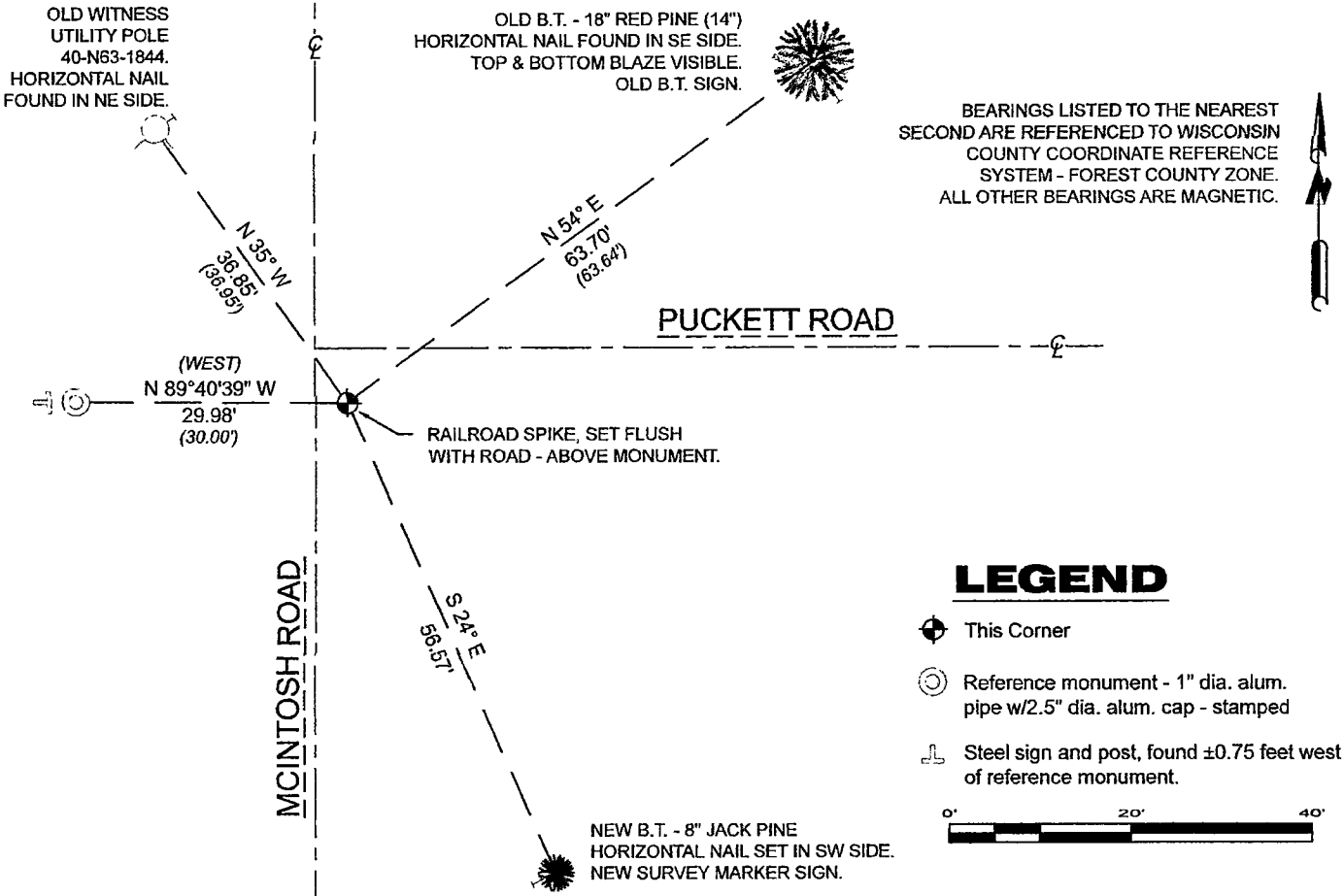
Date of Original Survey	Commenced:	June 5, 1865	Original Accessories:		
	Completed:	June 10, 1865	Birch	8	S 28° E 18 Links
			Yellow Pine	8	N 84° W 23 Links

See previous U.S. Public Land Survey Monument Record - P-5 - December 21, 1998 - Surveyor 1651 - Alan D. Harrison - THENCE:

May 28, 2003 - Surveyor 1616 - Stephan J. Favorite - indicates this position as "6" dia. brass capped concrete monument" on Forest Co. Surveyor file #411420-20030528.

October 02, 2023 - I found a standard size Mag nail near the intersection of McIntosh Road and Puckett Road centerlines. The mag nail did not agree with the existing reference monuments, so I removed it and hand excavated the road. I found a concrete monument with a 6" diameter brass cap stamped to identify corner location. The monument is ±1.4' below the road grade, ±3.5' east of the McIntosh Road centerline, and ±6' south of the Puckett Road centerline. I set a railroad spike at grade. I also found 3 of the previously mentioned reference monuments, and established 1 new bearing tree as shown below.

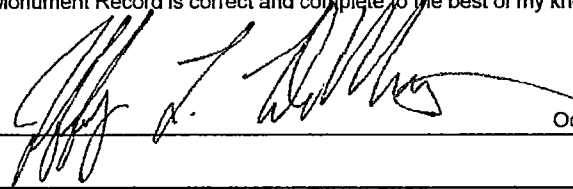
A-E 7.08(3)(c)(d) Plan view of corner with references to at least 4 witness monuments.

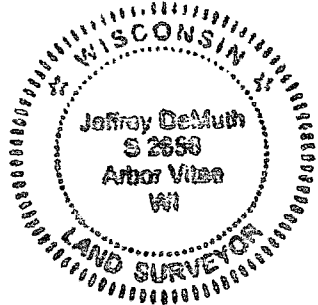


A-E 7.08(3)(e) 1865 Surveyor set a post, 1998 Surveyor found a 6" diameter concrete monument. I found a concrete monument with a 6" diameter brass cap ±1.4 feet below the road grade, and set a railroad spike at the road surface.

A-E 7.08(3)(f) I accept this monument as a FOUND PERPETUATED LOCATION of the corner.
A-E 7.08(3)(g)(h) This corner was not determined through lost-corner-proportionate methods.

A-E 7.08(3)(i) I, Jeffrey L. DeMuth, Professional Land Surveyor No. S-2656, hereby certify that the corner location on this record was determined by me or under my direction and control, and that this U.S. Public Land Survey Monument Record is correct and complete to the best of my knowledge, and belief.

SIGNATURE  DATE October 04, 2023



4414192000 P5

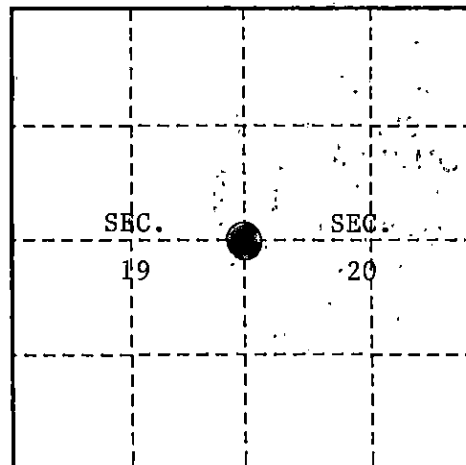
U. S. PUBLIC LAND SURVEY MONUMENT RECORD

INSTRUCTIONS:

This record shall show the location of the corner and shall include all of the following nine elements (a through i).

- (a) Identify the corner by reference to the U.S. public land survey system.
O = Corner monument restored.

One Quarter Corner common to Sections 19 and 20, T.41N., R.14E., Forest County Wisconsin.



- (b) Describe any record evidence, monument evidence, occupational evidence, testimonial evidence or any other material evidence you considered, and whether the monument was found or placed.

In 1865, William daugherty set 1/4 corner post and made the following references:
Birch 8"5 28°E 18 lks (11.88 feet), Yellow Pine 10" N 84°W 23 lks (15.18 feet).

1963 Jean Resvick, R.L.S., restored corner in the intersection of a north-south road with a road running east as the best evidence of corners location. Made the following references: Power Pole #L-35-47-1920 S 16°W 75.57 feet; Power Pole #NT-40-N63-1844 N35°W 36.91 feet.

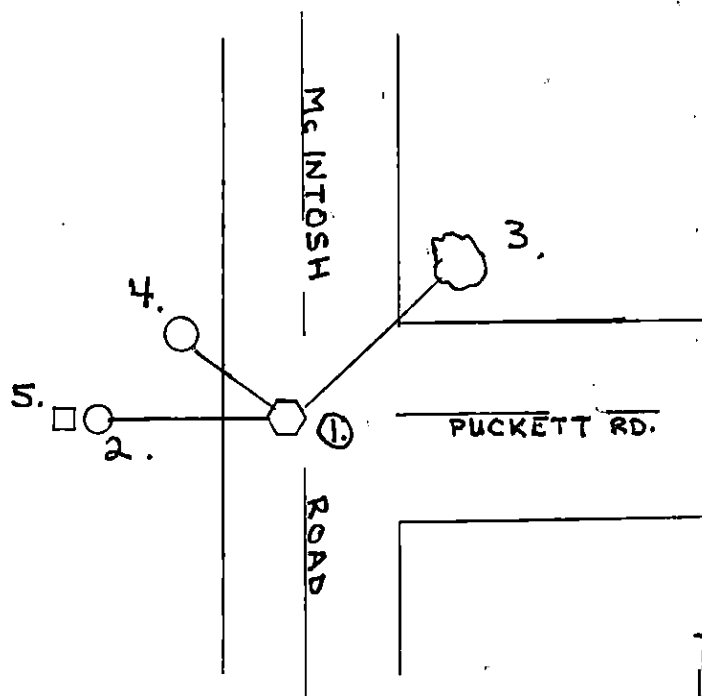
1998 Alan Harrison, R.L.S., found monument in road intersection, 1 foot below road surface. S.W. powere pole was removed. Set new references as below.

REGISTER'S OFFICE
Forest County, Wis.
Received for record this 24th day
of March A.D., 1999 at
1:15 o'clock P.M. and recorded
in Vol. CORNER RESTORATION
page P-5
Christie Ehlinger
Deputy Register of Deeds

- (c) In the plan view drawing below, provide reference ties to at least 4 witness monuments, or, if the location is within a municipality, to at least 2 witness monuments. (witness monuments shall be made of concrete, natural stone, iron or other equally durable material.)

- (d) Show a plan view drawing depicting the relevant monuments and reference ties which is sufficient in detail to enable accurate relocation of the corner monument if the corner monument is disturbed. Indicate north.

- 1) 6" Concrete Monument with Brass Cap
1 foot below road surface
- 2) Witness Corner 1" x 36" West 30.00 feet
- 3) Red Pine 14' N54°E 63.64 feet
- 4) Power Pole 40-N63-1844 N35°W 36.95 feet
- 5) Steel Sign Post 6' West 30.82 feet



44114 19 2000

P-5

(e) Describe any material discrepancy between the location of the corner as restored or reestablished and the location of that corner as previously restored or reestablished by distance and direction. Show the discrepancy on the plan view drawing under (d), above. Show the distances between the corner as previously restored or reestablished and (1) the corner as restored or reestablished, and (2) to at least 2 of the witness monuments shown on the drawing in (d), above.

none

(f) Was the corner restored through acceptance of (1) an obliterated evidence location, or, (2) a found perpetuated location?

a perpetuated position

(g & h) Was the corner reestablished through lost corner proportionate methods? If so, show the method, including the directions and distances to other public land survey corners used as evidence or used for proportioning in determining the corner location?

no

(1) I, Alan D. Harrison

(type or print name) certify that the corner location shown on this record was determined by me or under my direction and control and that this U.S. Public Land Survey Monument Record is correct and complete to the best of my knowledge and belief.

Alan D. Harrison

Signature

12/21/98

Date

CERTIFICATE READY FOR FILING:

C. B. Tippetts
District Ranger

