

FILED ON:  
06/06/2025 03:26 PM  
CORTNEY BRITTEN CLEEREMAN  
REGISTER OF DEEDS  
FOREST COUNTY WI  
PAGES: 1

U.S. PUBLIC LAND SURVEY  
MONUMENT RECORD

NOTE: This form is intended and designed to fulfill all requirements of Wisconsin Administrative Code, Chapter A-E 7.08 U.S. Public Land Survey Monument Record (3) (a-i)

A-E 7.08(3)(a) Identity of corner:  
Southeast Corner Section 24,  
Township 41 North, Range 14 East  
of the Fourth Principal Meridian,  
Town of Alvin, Forest County,  
Wisconsin

WISCRS - FOREST COUNTY  
N: 731,337.987 USft (XXX,XXX.XXX)  
E: 892250.762 USft (XXX,XXX.XXX)  
Datum: NAD83 (2011)  
GNSS Method RTK  
GNSS Control WISCRS VRS



The coordinate value shown has been verified by the average of two or more GPS observations at a markedly different time. Coordinates shown in parenthesis are previously published values.

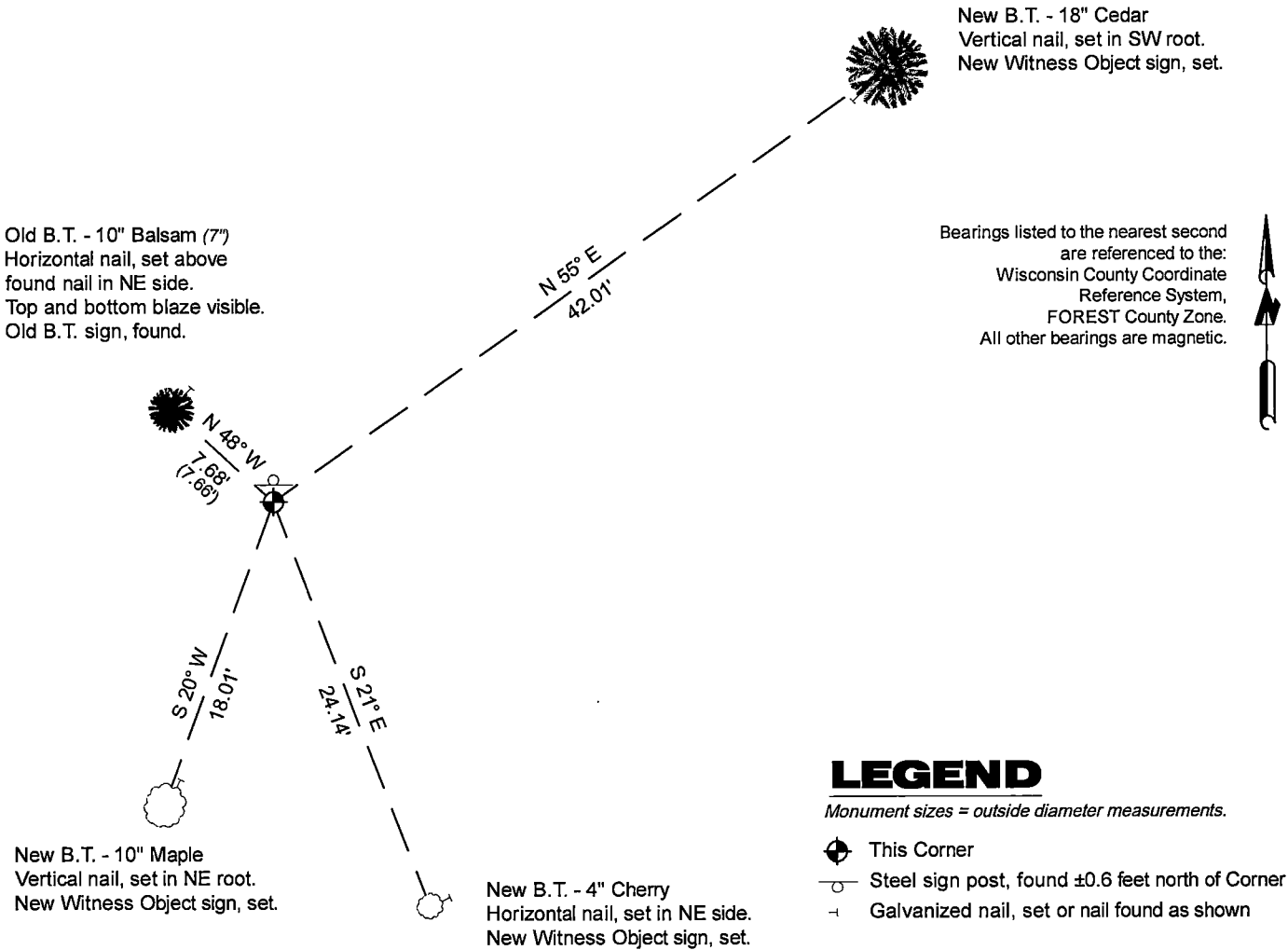
A-E 7.08(3)(b)

Original Surveyor: William E. Daugherty - October 20, 1864 to October 24, 1864  
Fir 8 - N 51° E, 30 Links, Cedar 16 - N 63° W, 15 Links  
Cedar 12 - S 46° W, 41 Links, Cedar 10 - S 21° E, 29 Links

See previous U.S. Public Land Survey Monument Record - R-25 - February 16, 1992 - Surveyor 1634 - Gary Lee Pisoni. THENCE:

May 14, 2025 - In performing the 2024 - Forest County - "PLSS Corner Remonumentation and GPS Services" project, I found a 2.4" diameter aluminum pipe monument with a 3.25" diameter aluminum cap stamped to identify the corner. The monument is at the south edge of a wet area, and extends ±12" above grade. I also found 1 of Pisoni's bearing trees alive and in good condition. I established 3 new reference monuments as shown below.

A-E 7.08(3)(c)(d) Plan view of corner with references to at least 4 witness monuments.



A-E 7.08(3)(e) 1864 Surveyor set a post, 1992 Surveyor set a 2 1/2" diameter aluminum pipe monument, with an aluminum cap stamped to identify corner. In 2024, I found a 2.4" diameter aluminum pipe monument with a 3.25" diameter aluminum cap stamped to identify the corner.

A-E 7.08(3)(f) I accept this monument in good faith as a FOUND PERPETUATED LOCATION of the corner.

A-E 7.08(3)(g)(h) This corner was not determined through lost-corner-proportionate methods.

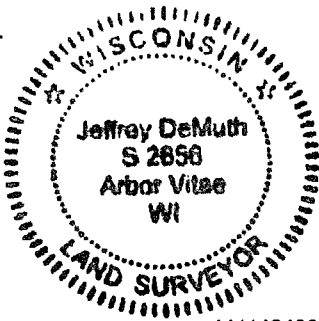
A-E 7.08(3)(i) I, Jeffrey L. DeMuth, Professional Land Surveyor No. S-2656, hereby certify that the corner location on this record was determined by me or under my direction and control, and that this U.S. Public Land Survey Monument Record is correct and complete to the best of my knowledge, and belief.

SIGNATURE

*Jeffrey L. DeMuth*

May 16, 2025

DATE



44114240000

44114240000

R25

U.S. PUBLIC LAND SURVEY MONUMENT RECORD

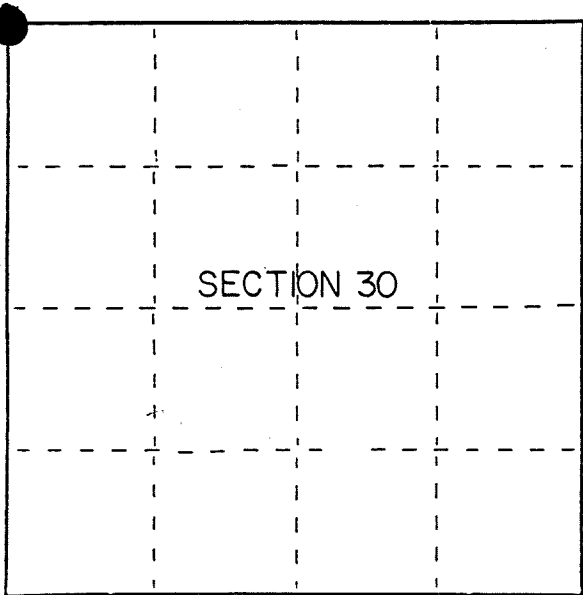
Index No. R-1

State of Wisconsin }  
County of Florence } ss.

I, Gary L. Pisoni, do hereby  
certify that on the 4th day  
of September, 1991, I found  
evidence of the Northwest Section  
corner of Section 30  
Township 41 North, Range  
15 East, Fourth Principal Meridian,  
as described hereon; and that from this evidence  
I established a new monument and accessories  
as described hereon to perpetuate the original  
location of this corner.

Resident witnesses:

\_\_\_\_\_  
\_\_\_\_\_  
\_\_\_\_\_



● = Corner monument restored.

History of original corner establishment:

Original Government Survey in 1864 by William E. Daugherty. North between Sections  
25 and 30, at 80.00 chs., set Section Corner Post to sections 19, 30, 24 and 25,  
from which the following bear;

Fir	8"	N51°E	30 lks.
Cedar	16"	N63°W	15 lks.
Cedar	12"	S46°W	41 lks.
Cedar	10"	S21°E	29 lks.

In 1974, Jean Resvick, a Land Surveyor with the Forest Service found an old white painted  
post and a 3/4" well pipe 0.50 feet East of the post.

Description of corner evidence found:

Found the post and well pipe as described by Jean Resvick.

I accept the pipe as the best available evidence for restoring the corner position.

Description of monument and accessories I established to perpetuate the original location of this corner.

In place of pipe, set a 2½ inch diameter aluminum pipe monument, 3 feet long, 3 inches  
above the ground, with an aluminum cap stamped; T41N, R14E, R15E, S19, S24, S25, S30,  
1991, S-1634. From which the following new blazed and scribed bearing trees bear;  
(measurements taken to a nail in side of tree)

Balsam	3"	S74°E	10.01 feet
Balsam	8"	S55°W	30.03 feet
Spruce	8"	S87°W	40.82 feet
Balsam	7"	N48°W	7.66 feet
Steel Sign Post		North	0.67 feet

Dated at Iron River, MI, this 16th day of February, 1992

Signature Gary L. Pisoni Title Land Surveyor Registration No. S-1634  
(County Surveyor, Registered Land Surveyor, or other duly authorized official)

Office of Register of Deeds, County of \_\_\_\_\_, I hereby certify that the within  
instrument was filed in this office for record on the \_\_\_\_\_ day of \_\_\_\_\_, 19\_\_\_\_  
at \_\_\_\_\_ o'clock \_\_\_\_\_ M.

\_\_\_\_\_  
(Register of Deeds)

By \_\_\_\_\_ Deputy

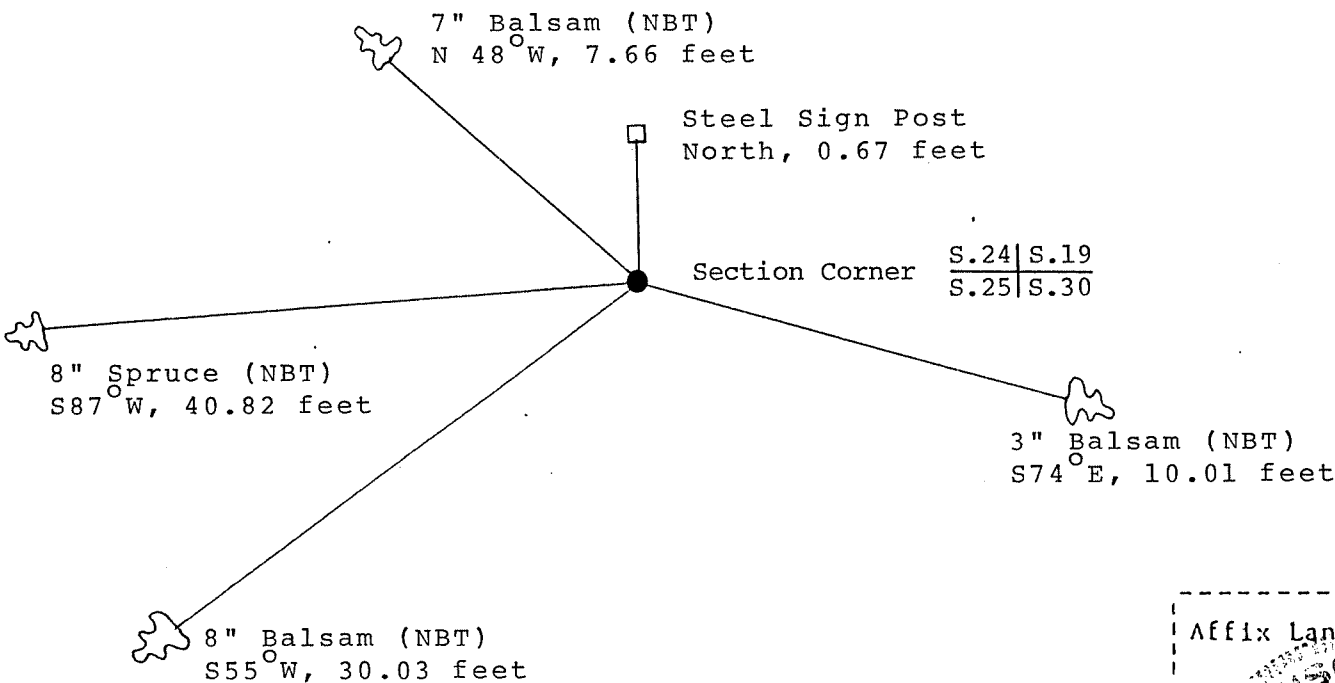
e) Describe any material discrepancy between the location of the corner as restored or reestablished and the location of that corner as previously restored or reestablished by distance and direction. Show the discrepancy on the plan view drawing under (d), above. Show the distances between the corner as previously restored or reestablished and (1) the corner as restored or reestablished, and (2) to at least 2 of the witness monuments shown on the drawing in (d), above.

See drawing below.

(f) Was the corner restored through acceptance of (1) an obliterated evidence location, or, (2) a found perpetuated location?

Restored from accepted evidence.

(g&h) Was the corner reestablished through lost corner proportionate methods? If so, show the method, including the directions and distances to other public land survey corners used as evidence or used for proportioning in determining the corner location?



(i) I, Gary L. Pisoni  
(type or print name) certify that the corner location shown on this record was determined by me or under my direction and control and that this U.S. Public Land Survey Monument Record is correct and complete to the best of my knowledge and belief.

Gary L. Pisoni March 13<sup>th</sup> 1992  
Signature Date

Survey requested by; Mike Carr 4/2/92  
District Ranger Date

U.S. PUBLIC LAND SURVEY MONUMENT RECORD

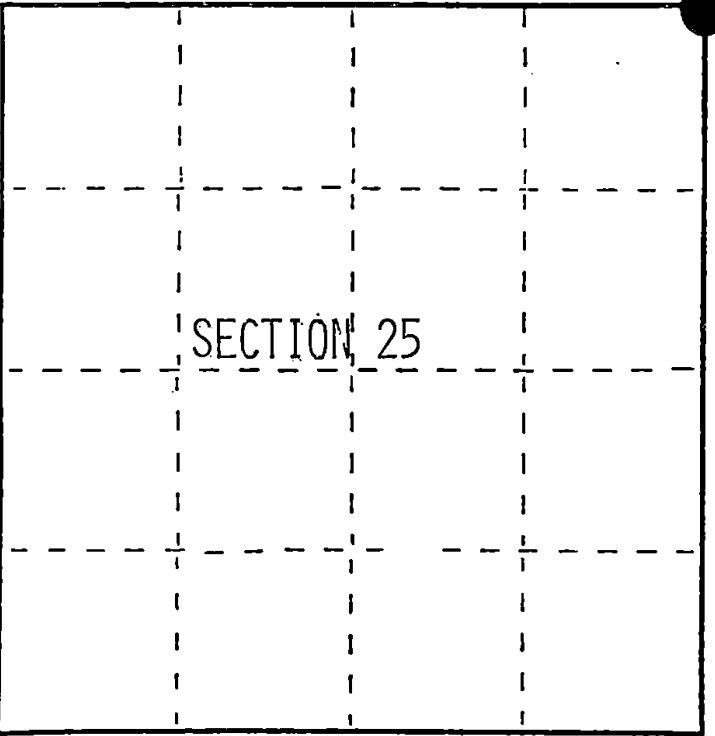
Index No. R-25

State of Wisconsin }  
County of Forest } ss.

I, Gary L. Pisoni, do hereby  
certify that on the 4th day  
of September, 1991, I found  
evidence of the Northeast Section  
corner of Section 25  
Township 41, North, Range  
14 East, Fourth Principal Meridian,  
as described hereon; and that from this evidence  
I established a new monument and accessories  
as described hereon to perpetuate the original  
location of this corner.

Resident witnesses:

\_\_\_\_\_  
\_\_\_\_\_  
\_\_\_\_\_



○ = Corner monument restored.

History of original corner establishment:

Original Government Survey in 1864 by William E. Daugherty. North between Sections 25 and 30, at 80.00 chs., set Section Corner Post to Sections 19, 30, 24 and 25, from which the following bear;

Fir	8"	N51°E	30 lks.
Cedar	16"	N63°W	15 lks.
Cedar	12"	S46°W	41 lks.
Cedar	10"	S21°E	29 lks.

In 1974, Jean Resvick, a Land Surveyor with the Forest Service found an old white painted post and a 3/4" well pipe 0.50 feet East of the post.  
Description of corner evidence found:

Found the post and well pipe as described by Jean Resvick.

I accept the pipe as the best available evidence for restoring the corner position.

Description of monument and accessories I established to perpetuate the original location of this corner.

In place of pipe, set a 2½ inch diameter aluminum pipe monument, 3 feet long, 3 inches above the ground, with an aluminum cap stamped; T41N, R14E, R15E, S19, S24, S25, S30, 1991, S-1634. From which the following new blazed and scribed bearing trees bear; (measurements taken to a nail in side of tree)

Balsam	3"	S74°E	10.01 feet
Balsam	8"	S55°W	30.03 feet
Spruce	8"	S87°W	40.82 feet
Balsam	7"	N48°W	7.66 feet
Steel Sign Post		North	0.67 feet

Dated at Iron River, MI, ~~WIS.~~, this 16th day of February, 1992

Signature Gary L. Pisoni Title Land Surveyor Registration No. S-1634  
(County Surveyor, Registered Land Surveyor, or other duly authorized official)

Office of Register of Deeds, County of Forest, I hereby certify that the within instrument was filed in this office for record on the 12th day of August, 1993 at 1:25 o'clock P M.

\_\_\_\_\_  
(Register of Deeds)  
By Shal Chitto Deputy

441142400000

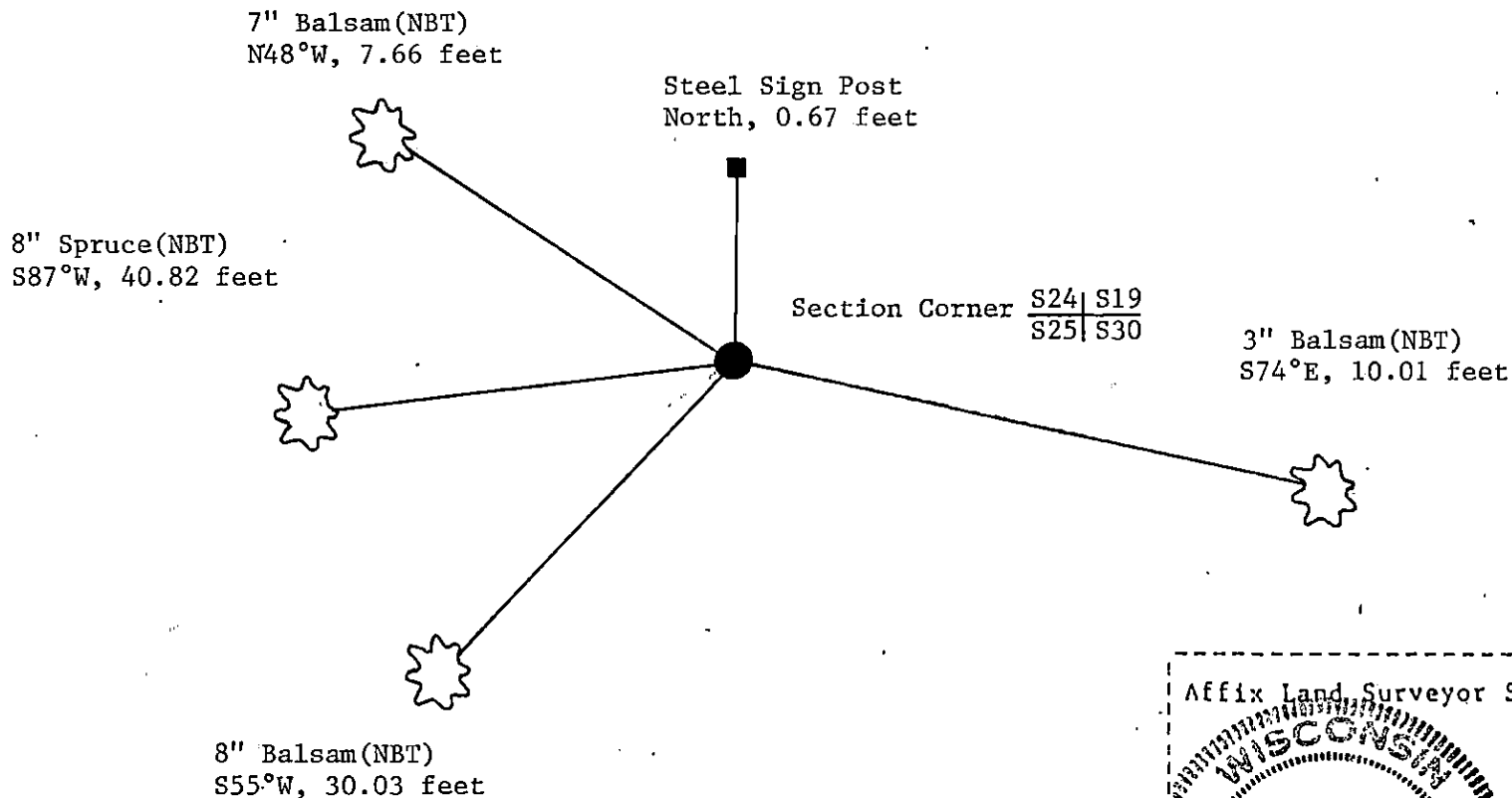
- (e) Describe any material discrepancy between the location of the corner as restored or reestablished and the location of that corner as previously restored or reestablished by distance and direction. Show the discrepancy on the plan view drawing under (d), above. Show the distances between the corner as previously restored or reestablished and (1) the corner as restored or reestablished, and (2) to at least 2 of the witness monuments shown on the drawing in (d), above.

See drawing below.

- (f) Was the corner restored through acceptance of (1) an obliterated evidence location, or, (2) a found perpetuated location?

Restored from accepted evidence.

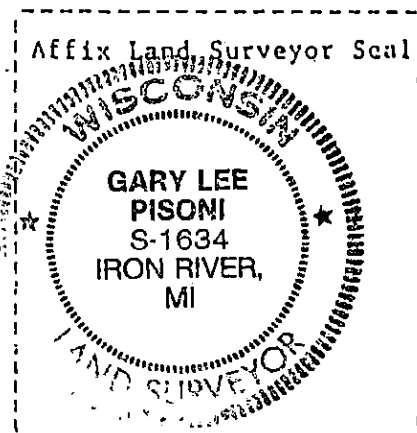
- (g&h) Was the corner reestablished through lost corner proportionate methods? If so, show the method, including the directions and distances to other public land survey corners used as evidence or used for proportioning in determining the corner location?



- (i) 1. Gary L. Pisoni  
(Type or print name) certify that the corner location shown on this record was determined by me or under my direction and control and that this U.S. Public Land Survey Monument Record is correct and complete to the best of my knowledge and belief.

Signature

Date



Jan 12, 1993