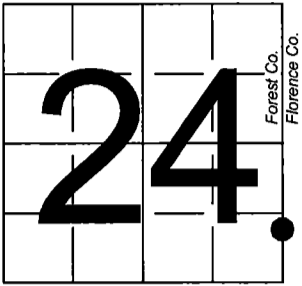


U.S. PUBLIC LAND SURVEY
MONUMENT RECORD

NOTE: This form is intended and designed to fulfill all requirements of Wisconsin Administrative Code, Chapter A-E 7.08 U.S. Public Land Survey Monument Record (3) (a-i)

A-E 7.08(3)(a) Identity of corner:
Meander Corner, East line Section 24,
South side of Brule River,
Township 41 North, Range 14 East
of the Fourth Principal Meridian,
Town of Alvin, Forest County, Wisconsin

WISCRS - FOREST COUNTY
N: 732,372.531 USft (XXX,XXX.XXX)
E: 892,278.082 USft (XXX,XXX.XXX)
Datum: NAD83 (2011)
GNSS Method RTK
GNSS Control WISCORS VRS



R. 14E.
T. 41N.

The coordinate value shown has been verified by the average of two or more GPS observations at a markedly different time. Coordinates shown in parenthesis are previously published values.

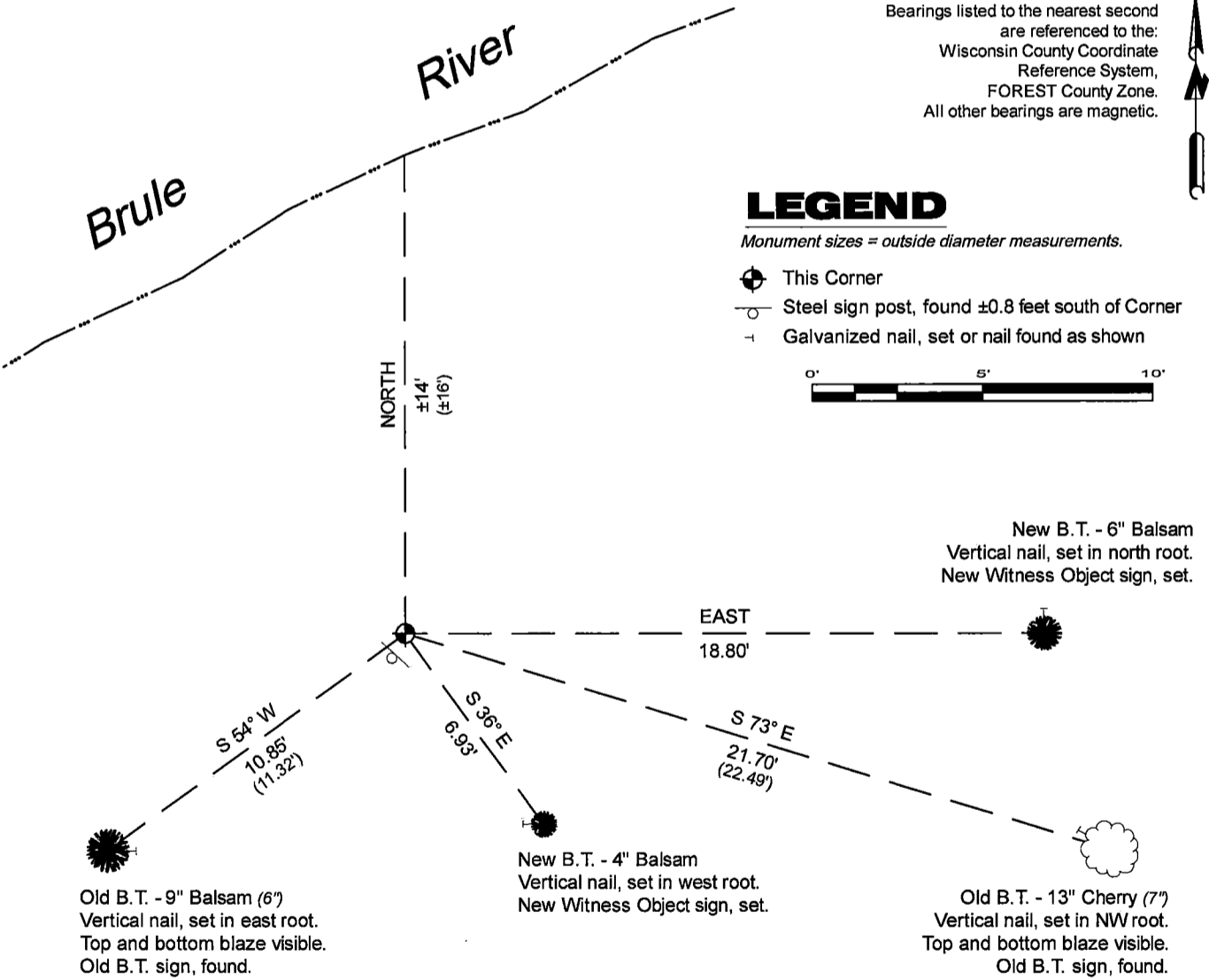
A-E 7.08(3)(b)

Original Surveyor: William E. Daugherty - October 20, 1864 to October 24, 1864
Cedar 10 - N 86° E, 30 Links, Cedar 10 - S 57° W, 24 Links

See previous U.S. Public Land Survey Monument Record - Q,R-25 - February 16, 1992 - Surveyor 1634 - Gary Lee Pisoni. THENCE:

May 14, 2025 - In performing the 2024 - Forest County - "PLSS Corner Remonumentation and GPS Services" project, I found a 2.4" diameter aluminum pipe monument with a 3.25" diameter aluminum cap stamped to identify the corner. The monument is at the bottom of a slope to the Brule River, and extends ±12" above grade. I also found 2 of Pisoni's bearing trees alive and in good condition. I established 2 new reference monuments as shown below.

A-E 7.08(3)(c)(d) Plan view of corner with references to at least 4 witness monuments.



A-E 7.08(3)(e) 1864 Surveyor set a post, 1992 Surveyor set a 2 1/2" diameter aluminum pipe monument, with an aluminum cap stamped to identify corner. In 2024, I found a 2.4" diameter aluminum pipe monument with a 3.25" diameter aluminum cap stamped to identify the corner.

A-E 7.08(3)(f) I accept this monument in good faith as a FOUND PERPETUATED LOCATION of the corner.

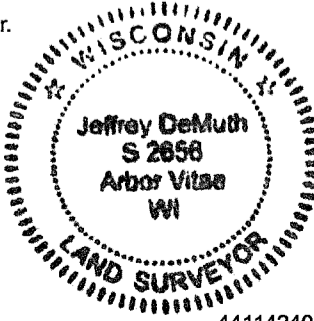
A-E 7.08(3)(g)(h) This corner was previously determined through lost-corner-proportionate methods.

A-E 7.08(3)(i) I, Jeffrey L. DeMuth, Professional Land Surveyor No. S-2656, hereby certify that the corner location on this record was determined by me or under my direction and control, and that this U.S. Public Land Survey Monument Record is correct and complete to the best of my knowledge, and belief.

SIGNATURE

May 16, 2025

DATE



44114240800

44114240800

Q25

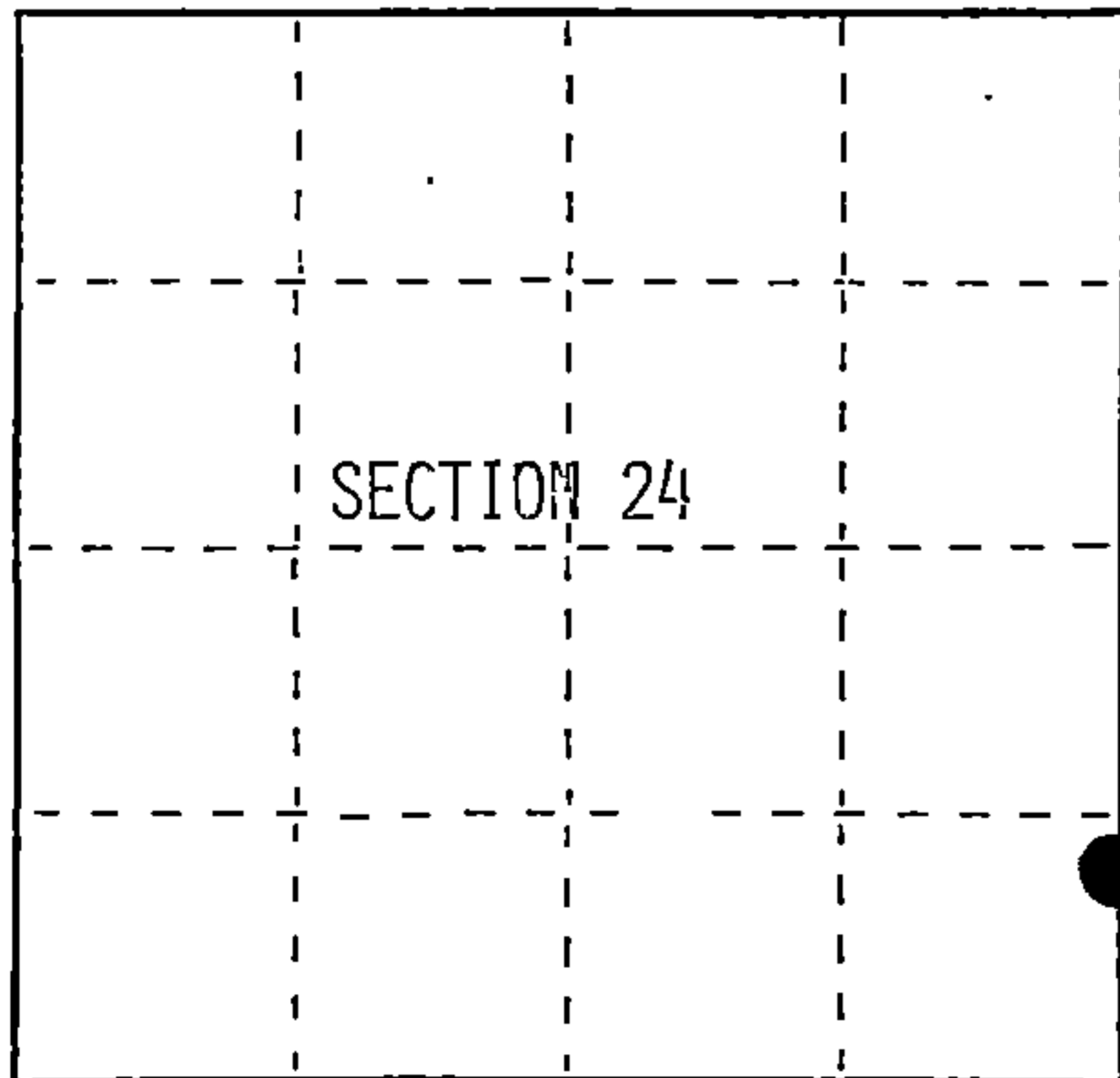
U.S. PUBLIC LAND SURVEY MONUMENT RECORD

Index No. Q.R-25

State of Wisconsin }
County of Forest } ss.

I, Gary L. Pisoni, do hereby
certify that on the 4th day
of September, 1991, I found
evidence of the Meander Corner
~~corner~~ between Sections 24 and 19
Township 41, North, Range
14 East, Fourth Principal Meridian,
as described hereon; and that from this evidence
I established a new monument and accessories
as described hereon to perpetuate the original
location of this corner.

Resident witnesses:



○ = Corner monument restored.

History of original corner establishment:

Original Government Survey in 1864 by William E. Daugherty. North between Sections
24 and 19, at 15.00 chains, set meander post, from which the following bear;
Cedar 10" N80°E 30 lks.
Cedar 10" S57°W 29 lks. •

Description of corner evidence found:

No original corner evidence was recovered.

I tried using the river ties to position the meander corner between Sections
24 and 19, but could not accurately determine the corner position. In order
to re-establish the meander corner between Sections 24 and 19, I used the
average mean bearing between Sections 25 and 30 and projected that bearing between
Sections 24 and 19 to the South bank of the Brule River.

Description of monument and accessories I established to perpetuate the original location of this corner.

At the corner position, set a 2½ inch diameter aluminum pipe monument, 3 feet long,
3 inches above the ground, with an aluminum cap stamped; T41N, R14E, R15E, Meander
Corner, S24, S19, 1992, S-1634, from which the following new blazed and scribed
bearing trees bear; (measurements taken to a nail in side of tree)

Balsam	8"	East	16.81 feet
B. Cherry	7"	S73°E	22.49 feet
Balsam	6"	S54°W	11.32 feet
Steel Sign Post		South	0.8 feet

Monument is approximately 16 feet from river shoreline.

Dated at Iron River, MI, this 16th day of February, 1992

Signature Gary L. Pisoni Title Land Surveyor Registration No. S-1634
(County Surveyor, Registered Land Surveyor, or other duly authorized official)

Office of Register of Deeds, County of Forest, I hereby certify that the within
instrument was filed in this office for record on the 12th day of August, 1993
at 1:25 o'clock P M.

By [Signature] (Register of Deeds) Deputy

44114240800

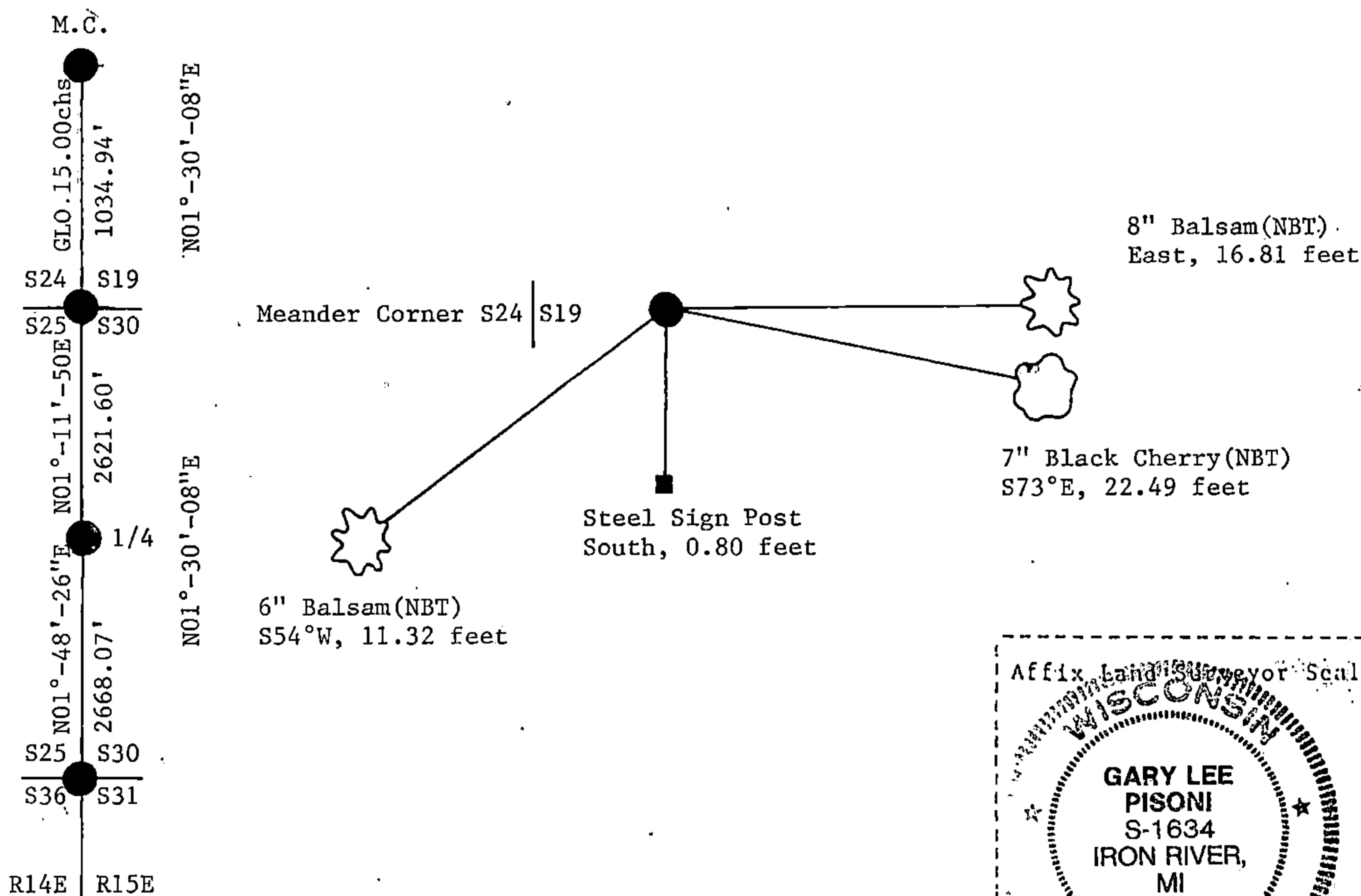
(e) Describe any material discrepancy between the location of the corner as restored or reestablished and the location of that corner as previously restored or reestablished by distance and direction. Show the discrepancy on the plan view drawing under (d), above. Show the distances between the corner as previously restored or reestablished and (1) the corner as restored or reestablished, and (2) to at least 2 of the witness monuments shown on the drawing in (d), above.

See drawing below.

(f) Was the corner restored through acceptance of (1) an obliterated evidence location, or, (2) a found perpetuated location?

Restored through lost corner proportionate methods.

(g&h) Was the corner reestablished through lost corner proportionate methods? If so, show the method, including the directions and distances to other public land survey corners used as evidence or used for proportioning in determining the corner location?



(i) I, GARY L. PISONI
(type or print name) certify that the corner location shown on this record was determined by me or under my direction and control and that this U.S. Public Land Survey Monument Record is correct and complete to the best of my knowledge and belief.

Gary L. Pisoni Gary L. Pisoni Jan. 12, 1993
Signature Date

