

FILED ON:
06/06/2025 03:26 PM
CORTNEY BRITTEN CLEEREMAN
REGISTER OF DEEDS
FOREST COUNTY WI
PAGES: 1

U.S. PUBLIC LAND SURVEY
MONUMENT RECORD

NOTE: This form is intended and designed to fulfill all requirements of Wisconsin Administrative Code, Chapter A-E 7.08 U.S. Public Land Survey Monument Record (3) (a-i)

A-E 7.08(3)(a) Identity of corner:
Southeast Corner Section 25,
Township 41 North, Range 14 East
of the Fourth Principal Meridian,
Town of Alvin, Forest County,
Wisconsin

WISCRS - FOREST COUNTY
N: 726,050.263 USft (XXX,XXX.XXX)
E: 892,111.790 USft (XXX,XXX.XXX)
Datum: NAD83 (2011)
GNSS Method RTK
GNSS Control WISCORS VRS



The coordinate value shown has been verified by the average of two or more GPS observations at a markedly different time. Coordinates shown in parenthesis are previously published values.

A-E 7.08(3)(b)

Original Surveyor: William E. Daugherty - October 20, 1864 to October 24, 1864
Hemlock 18 - N 58° E, 23 Links, Hemlock 18 - N 42° W, 33 Links, Sugar 10 - S 18° W, 26 Links, Sugar 24 - S 32° E, 28 Links

See previous U.S. Public Land Survey Monument Record - V-25 - February 16, 1992 - Surveyor 1634 - Gary Lee Pisoni. THENCE:

April 30, 2025 - In performing the 2024 - Forest County - "PLSS Corner Remonumentation and GPS Services" project, I found a 2.4" diameter galvanized iron pipe monument with a 3" diameter brass cap stamped to identify the corner. The monument is on highland, in a rock mound, and extends ±6" above grade. I also found 4 of existing bearing trees alive and in good condition.

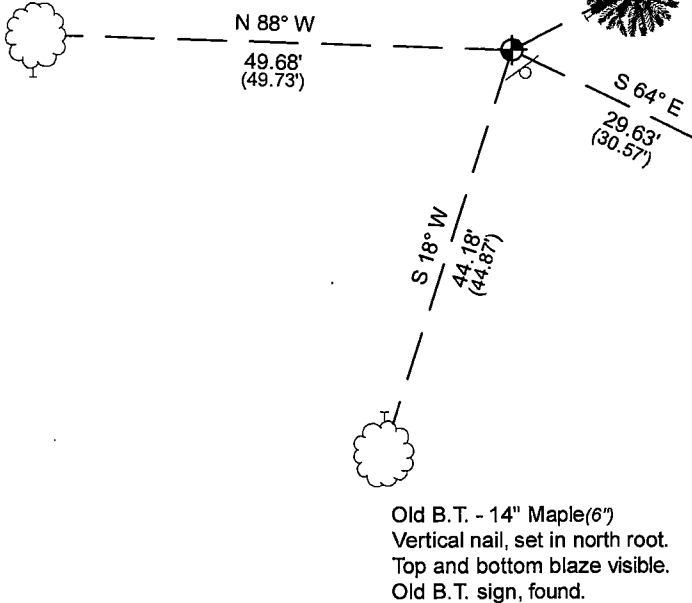
- 1 - Original - William E. Daugherty - October 1864
 - 1 - Jean F. Resvick - July 1973
 - 1 - Thomas R. Arnott - September 1976
 - 1 - Gary Lee Pisoni - February 1992
- I established 0 new reference monuments as shown below.

A-E 7.08(3)(c)(d) Plan view of corner with references to at least 4 witness monuments.

Bearings listed to the nearest second are referenced to the:
Wisconsin County Coordinate Reference System,
FOREST County Zone.
All other bearings are magnetic.

Old B.T. - 13" Maple(8")
Horizontal nail, set ±24" above grade in south side.
Top and bottom blaze visible.
New Witness Object sign, set.

Old B.T. - 19" Hemlock (16")
N63°E, 14.12' (15.37')
Vertical nail, set in SW root.
Top and bottom blaze visible.
Old B.T. sign, found.



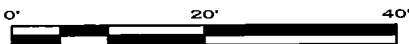
Old B.T. - 19" Maple(13")
Vertical nail, set in NW root.
Top and bottom blaze visible.
New Witness Object sign, set.

Old B.T. - 14" Maple(6")
Vertical nail, set in north root.
Top and bottom blaze visible.
Old B.T. sign, found.

LEGEND

Monument sizes = outside diameter measurements.

- This Corner
- Steel sign post, found ±1 foot SE of Corner
- Galvanized nail, set or nail found as shown



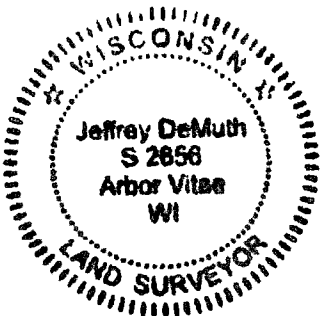
A-E 7.08(3)(e) 1864 Surveyor set a post, 1973 Surveyor set a galvanized wrought iron pipe monument, with a brass cap stamped to identify corner, 1976 & 1992 Surveyors found the same, as did I in 2025.
A-E 7.08(3)(f) I accept this monument in good faith as a FOUND PERPETUATED LOCATION of the corner.
A-E 7.08(3)(g)(h) This corner was not determined through lost-corner-proportionate methods.

A-E 7.08(3)(i) I, Jeffrey L. DeMuth, Professional Land Surveyor No. S-2656, hereby certify that the corner location on this record was determined by me or under my direction and control, and that this U.S. Public Land Survey Monument Record is correct and complete to the best of my knowledge, and belief.

SIGNATURE

May 16, 2025

DATE



44114250000

44114250000

V25

CERTIFIED LAND CORNER RESTORATION

State of Wisconsin

County of Forest

ss.

I, Jean F. Resvick, do hereby certify that on the 10th day of May, 1973, I found evidence of the Southeast Section corner of Section 25 Township 41 North, Range 14 East, Fourth Principal Meridian, as described hereon; and that from this evidence I established a new monument and accessories as described hereon to perpetuate the original location of this corner:

Description of original monument and accessories and subsequent restorations:

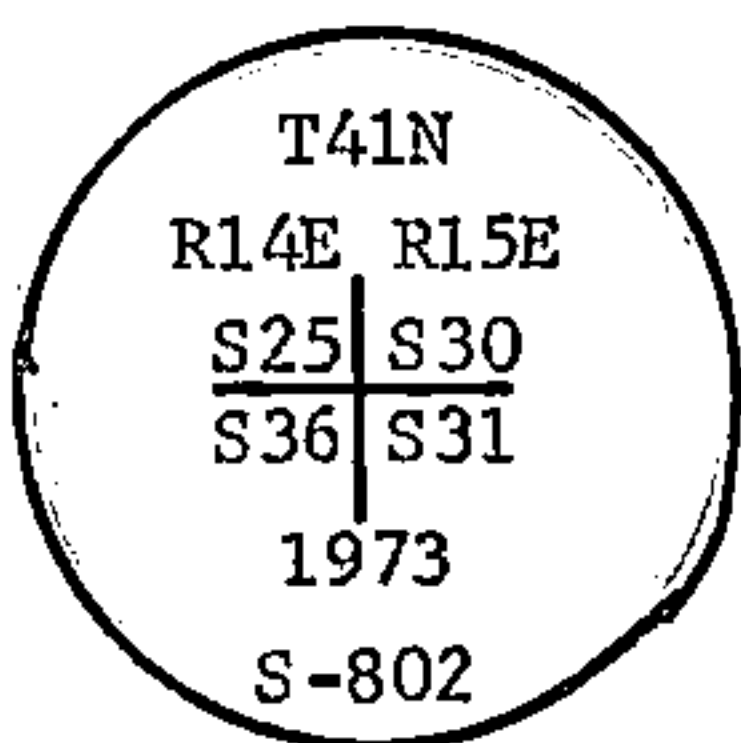
Surveyed in 1864 by William E. Daugherty
80.00 chains north between Section 31 and 36
Set post
Hemlock 18, bears N58E, 23 lks.
Hemlock 18, bears N42W, 33lks.
Sugar 10, bears S18W, 26 lks.
Sugar 24, bears S32E, 28 lks.

Description of corner evidence found:

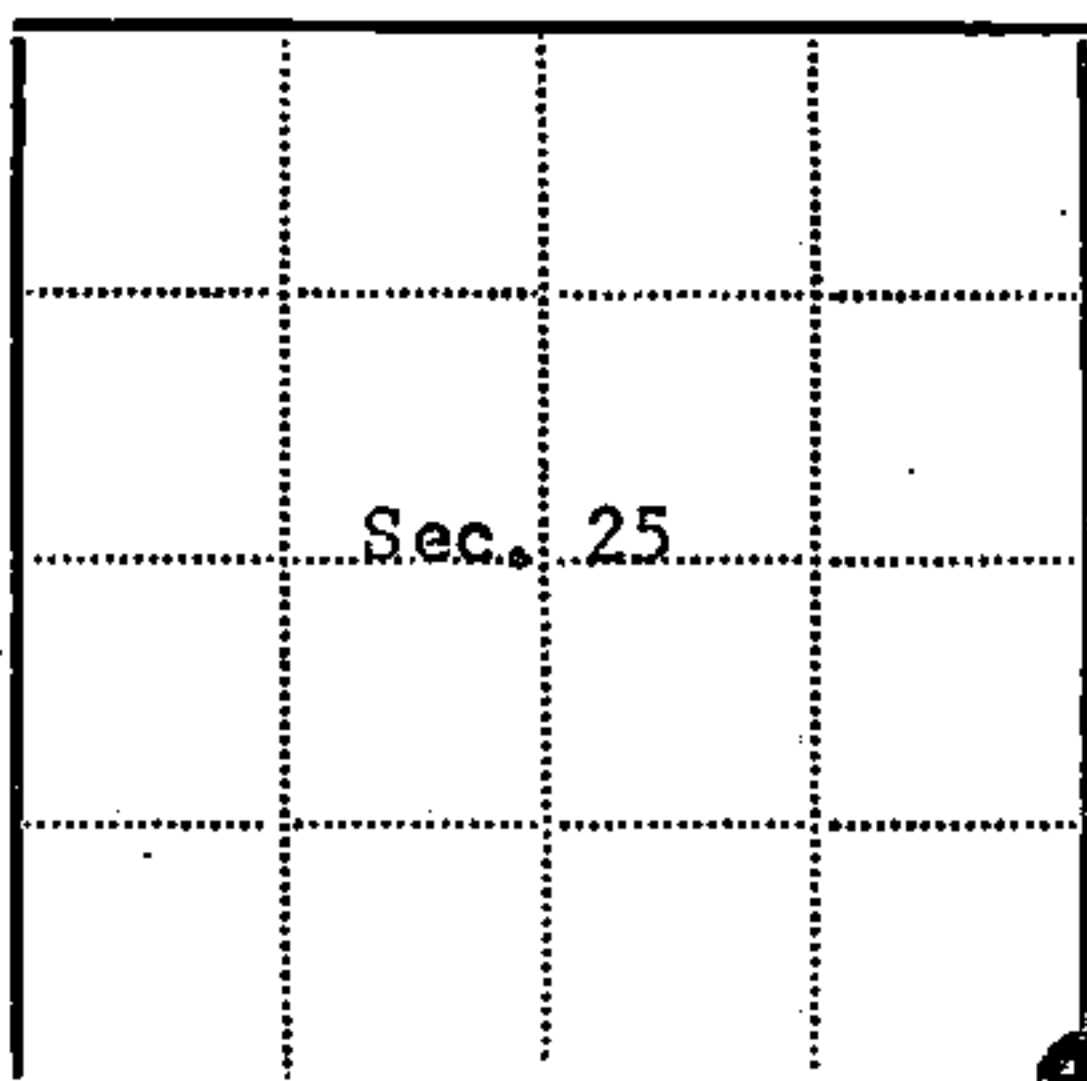
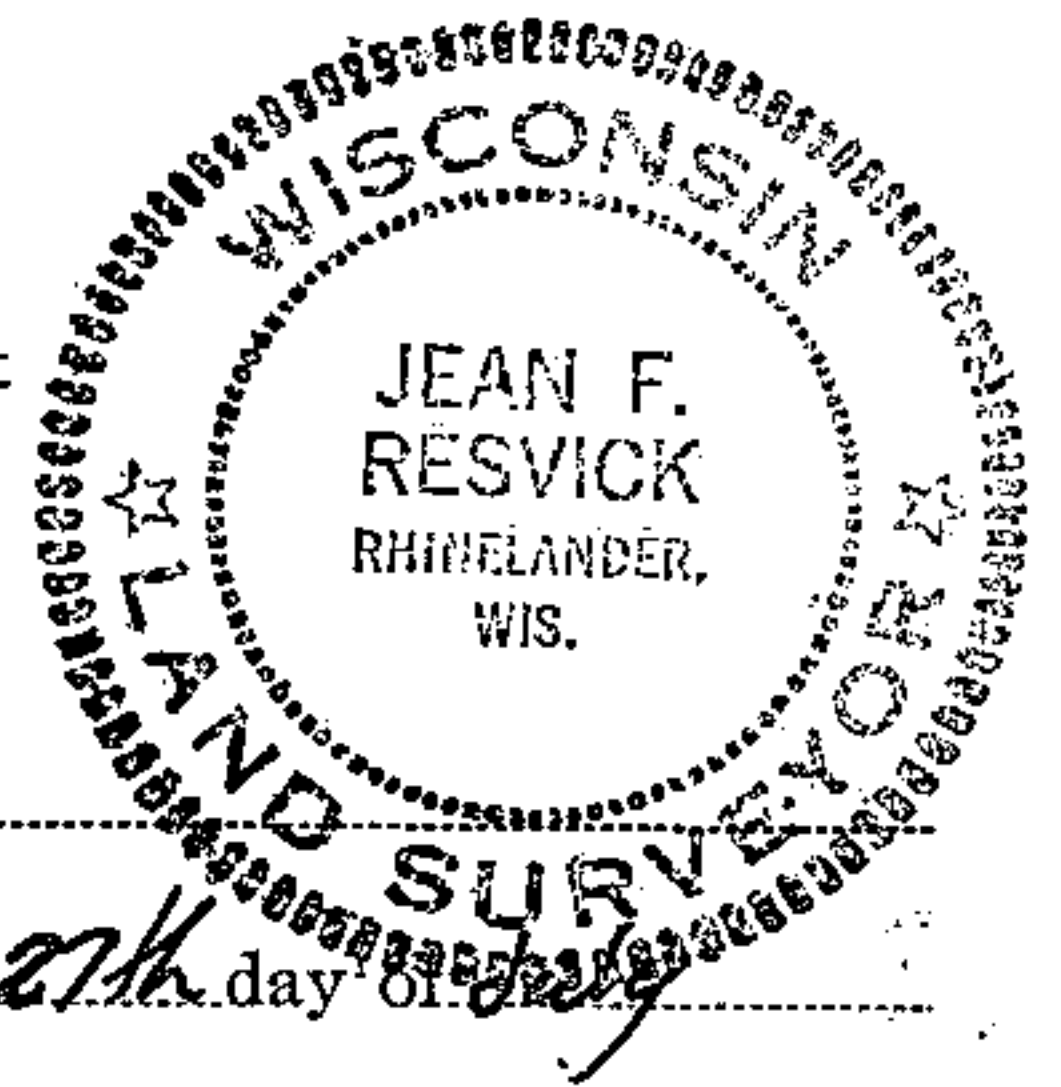
Found 3x3 squared cedar post, scribed, 1 foot long, lying on ground, found post point.
From post point: Hemlock 8 inch diameter when scribed, bears N62E, 23 lks. (Recorded as N58E)
Sugar stump bears S18E, 28 lks. (Recorded as S32E)
Hemlock stump bears N52W, 33lks. (Recorded as 42)
Scribed Hemlock now 16 inch diameter has been chopped out 3 or 4 times.
All distances check but bearings and tree diameters disagree with record.
No evidence found of 10 inch Maple.

Description of monument and accessories I established to perpetuate the location of this corner:

Replaced old post point with 2 inch inside diameter galvanized iron pipe, 3 feet long, filled with concrete to weigh 5 pounds per foot with brass cap stamped.



Blazed and scribed the following new bearing trees:
Maple 9, bears S62E, 30.64 feet
Hemlock 14, bears S36W, 36.33 feet
Galvanized sign post set 1 foot southeast of monument



● = Corner monument restored
□ =

Resident witnesses

Dated at Rhineland Wisconsin, this 27th day of July, 1973.

Signature Jean F. Resvick Title Land Surveyor
(County Surveyor, Registered Land Surveyor, or other duly authorized official).

Surveyors Registration No. S-802

DOCUMENT NUMBER

104458

Office of Register of Deeds

County of Forest

I hereby certify that the within instrument was filed in this office for record on the 13th day of November, 1973, and was filed in Book No. Restorations Page No. V-25 of County Records.

Signature Eugene Stutzman Title

Township 41 North, Range 14 East, Section 25, Index No. V-25, Page No.

44114250000

V25

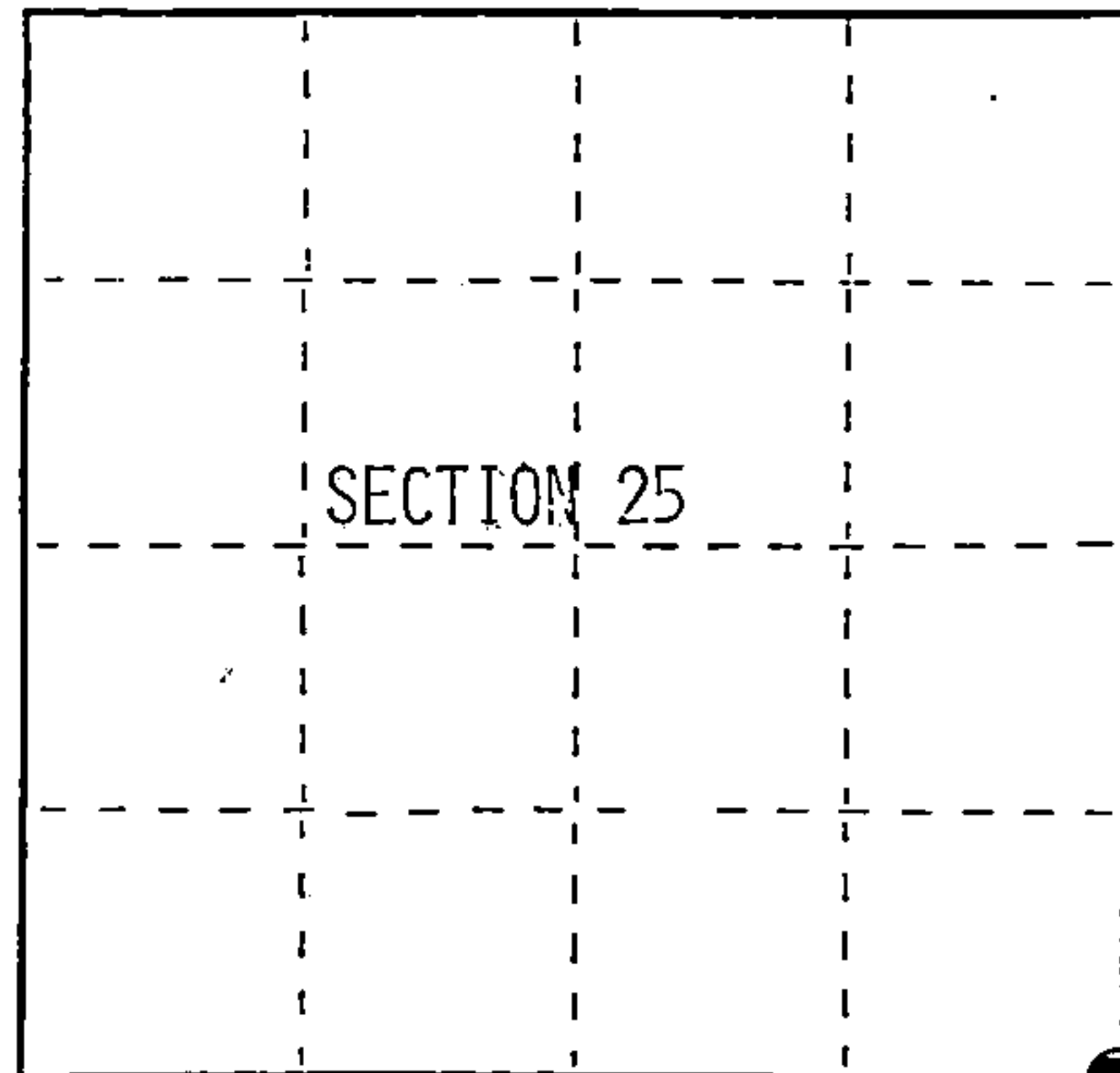
U.S. PUBLIC LAND SURVEY MONUMENT RECORD

Index No. V-25

State of Wisconsin }
County of Forest } ss.

I, Gary L. Pisoni, do hereby
certify that on the 10th day
of February, 1992, I found
evidence of the Southeast Section
corner of Section 25
Township 41, North, Range
14 East, Fourth Principal Meridian,
as described hereon; and that from this evidence
I established a new monument and accessories
as described hereon to perpetuate the original
location of this corner.

Resident witnesses:



○ = Corner monument restored.

History of original corner establishment:

Original Government Survey in 1864 by William E. Daugherty.

In 1973, Jean Resvick, a Land Surveyor with the Forest Service, restored the corner position using a post point and original bearing tree evidence. He replaced post point with a 2 inch inside diameter galvanized iron pipe, 3 feet long, with a brass cap stamped; T41N, R14E, R15E, S25, S30, S36, S31, 1973, S-802. Blazed and scribed the following;

Maple	9"	S62°E	30.64 feet
Hemlock	14"	S36°W	36.33 feet
Galvanized Post		Southeast	1.00 feet

Description of corner evidence found:

Found the following bearing trees;

Hemlock	16"	N63°E	15.37 feet
S. Maple	13"	S64°E	30.57 feet
S. Maple	8"	N88°W	49.73 feet (Made by Thomas Arnott)
Steel Sign Post		S29°E	1.00 feet

Description of monument and accessories I established to perpetuate the original location of this corner.

Blazed and scribed the following new bearing tree: (measurement taken to a nail in side of tree)

S. Maple	6"	S18°W	44.87 feet
----------	----	-------	------------

Dated at Iron River, MI, this 16th day of February, 1992

Signature: Gary L. Pisoni Title Land Surveyor Registration No. S-1634
(County Surveyor, Registered Land Surveyor, or other duly authorized official)

Office of Register of Deeds, County of Forest, I hereby certify that the within instrument was filed in this office for record on the 12th day of August, 1993 at 1:25 o'clock P M.

By [Signature] (Register of Deeds) Deputy

FORM NO. 985-A

H.C. Miller Company

Stock No. 26273
DOCUMENT NUMBER
148136

44114250000

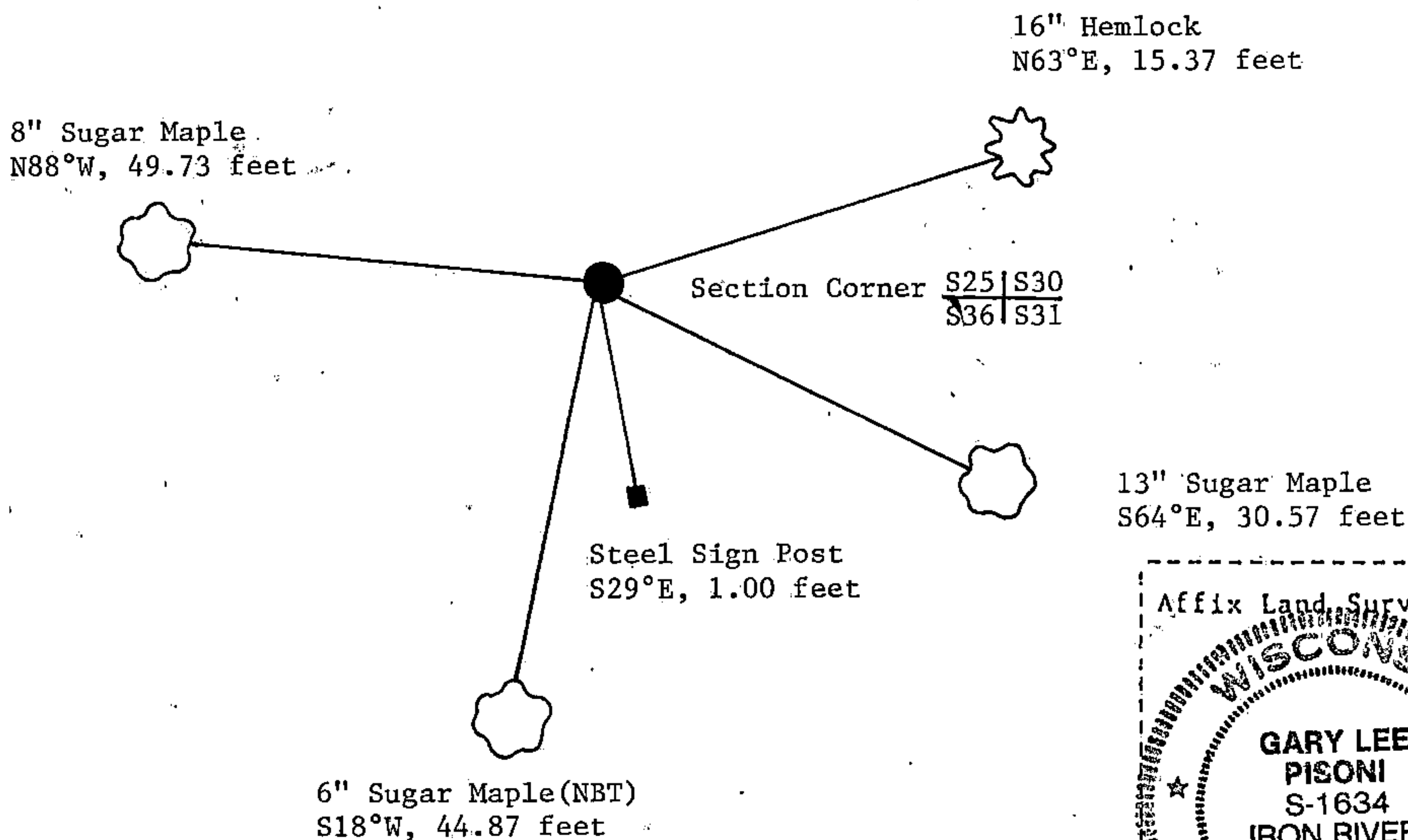
- (e) Describe any material discrepancy between the location of the corner as restored or reestablished and the location of that corner as previously restored or reestablished by distance and direction. Show the discrepancy on the plan view drawing under (d), above. Show the distances between the corner as previously restored or reestablished and (1) the corner as restored or reestablished, and (2) to at least 2 of the witness monuments shown on the drawing in (d), above.

See drawing below.

- (f) Was the corner restored through acceptance of (1) an obliterated evidence location, or, (2) a found perpetuated location?

Restored through acceptance of a found perpetuated location.

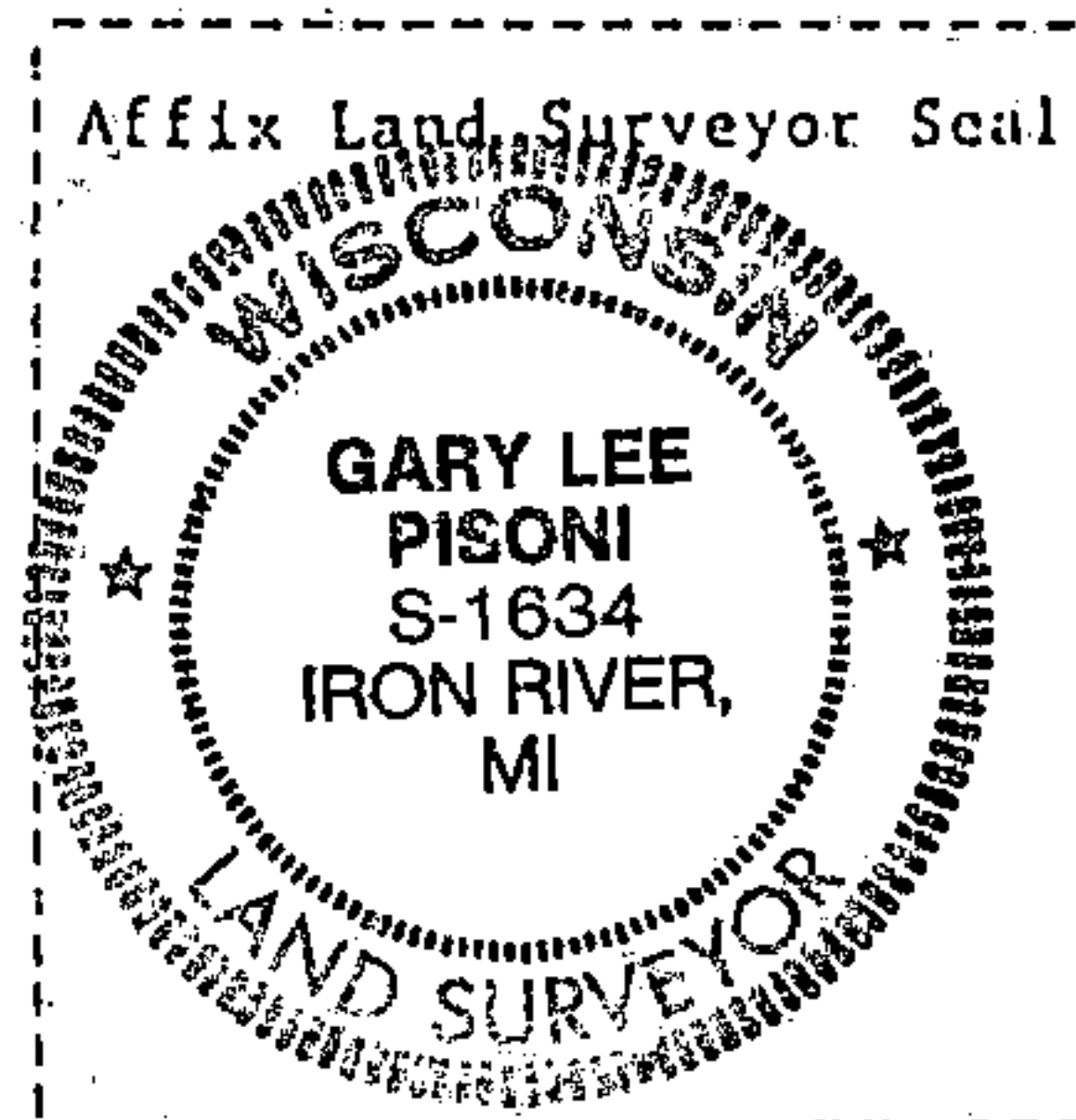
- (g&h) Was the corner reestablished through lost corner proportionate methods? If so, show the method, including the directions and distances to other public land survey corners used as evidence or used for proportioning in determining the corner location?



- (i) I, Gary L. Pisoni
(type or print name) certify that the corner location shown on this record was determined by me or under my direction and control and that this U.S. Public Land Survey Monument Record is correct and complete to the best of my knowledge and belief.

Signature

Date



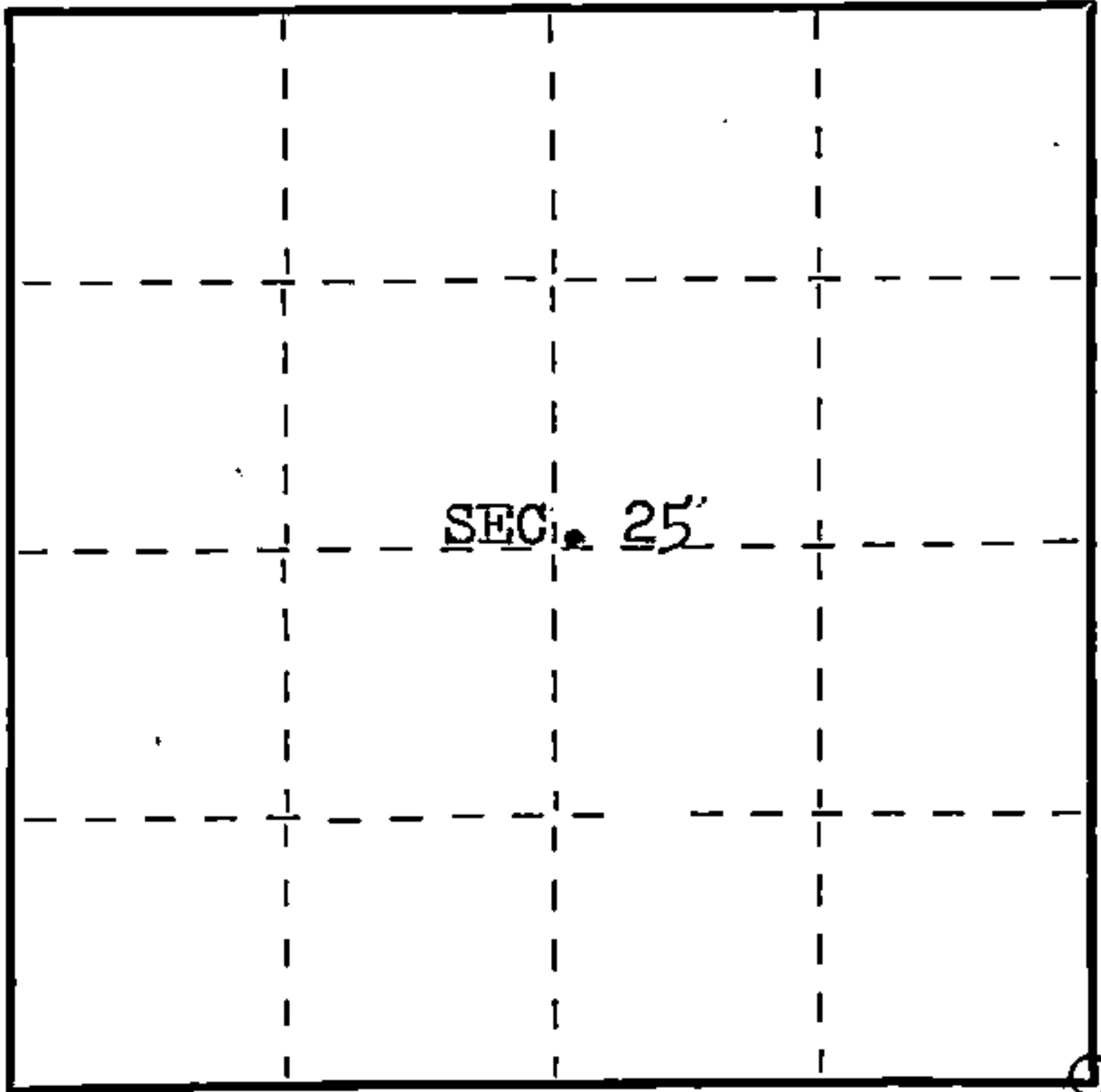
CERTIFIED LAND CORNER RESTORATION

Index No. **V25**

State of Wisconsin }
County of Forest } ss.

I Thomas R. Arnott, do hereby
certify that on the 14th day
of September, 1976, I found
evidence of the section corner
corner of sections 25, 30, 31 & 36
Township 41, North, Range
14 & 15 E, Fourth Principal Meridian,
as described hereon; and that from this evidence
I established a new monument and accessories
as described hereon to perpetuate the original
location of this corner.

Resident witnesses:



○ = Corner monument restored.

History of original corner establishment:
Surveyed in 1864 by William E. Daugherty

Hemlock	18	N58E	23 lks.
Hemlock	18	N42W	33 lks.
Sugar	10	S18W	26 lks.
Sugar	24	S32E	28 lks.

Description of corner evidence found:
Found 2 inch inside diameter galvanized iron pipe, 3 feet long,
filled with concrete with brass cap. Monument was set and bearing trees
blazed and scribed by Jean Resvick of the U.S. Forest Service.
Maple 9 S62E 30.64 feet
Hemlock 14 S36W 36.33 feet (this tree was knock over during logging
operations)

Description of monument and accessories I established to perpetuate the original location of this corner.

Left iron pipe with concrete and brass cap
Left Maple 9 inch S62E 30.64 feet

New Ties:

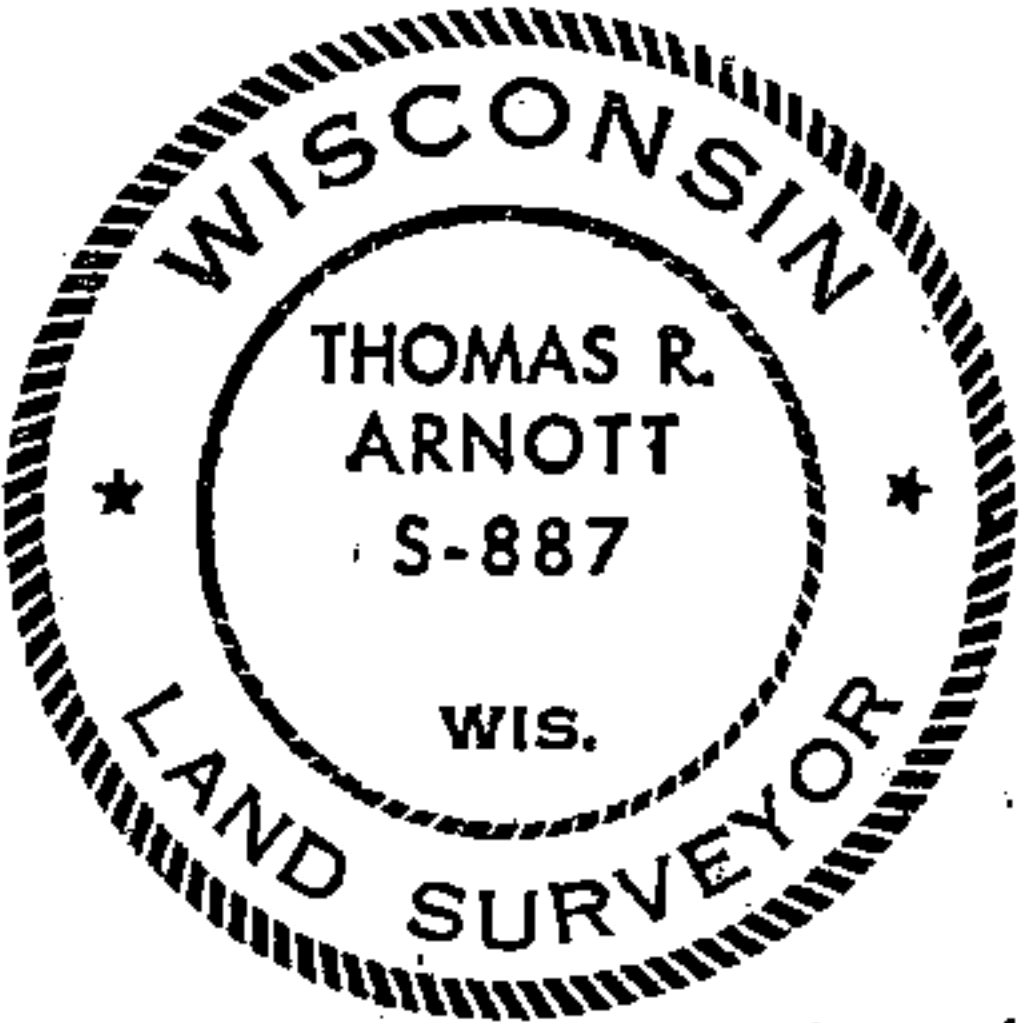
Balsam	6	S62W	32.11 feet
Maple	5	S81W	49.63 feet

Dated at Crandon, Wis., this 23rd day of Sept, 1976.

Signature Thomas R. Arnott Title Surveyor Registration No. S-887
(County Surveyor, Registered Land Surveyor, or other duly authorized official)

Office of Register of Deeds, County of Forest, I hereby certify that the within
instrument was filed in this office for record on the 23rd day of September, 1976.
at 4 o'clock P. M.

Eugene Stetson Document No. **110212**
(Register of Deeds)
By _____ Deputy



44114250000