

FILED ON:  
06/06/2025 03:26 PM  
CORTNEY BRITTEN CLEEREMAN  
REGISTER OF DEEDS  
FOREST COUNTY WI  
PAGES: 1

U.S. PUBLIC LAND SURVEY  
MONUMENT RECORD

NOTE: This form is intended and designed to fulfill all requirements of Wisconsin Administrative Code, Chapter A-E 7.08 U.S. Public Land Survey Monument Record (3) (a-i)

A-E 7.08(3)(a) Identity of corner:  
South 1/4 Corner Section 25,  
Township 41 North, Range 14 East  
of the Fourth Principal Meridian,  
Town of Alvin, Forest County,  
Wisconsin

WISCRS - FOREST COUNTY  
N: 726,213.018 USft (XXX,XXX.XXX)  
E: 889,458.328 USft (XXX,XXX.XXX)  
Datum: NAD83 (2011)  
GNSS Method RTK  
GNSS Control WISCORS VRS



The coordinate value shown has been verified by the average of two or more GPS observations at a markedly different time. Coordinates shown in parenthesis are previously published values.

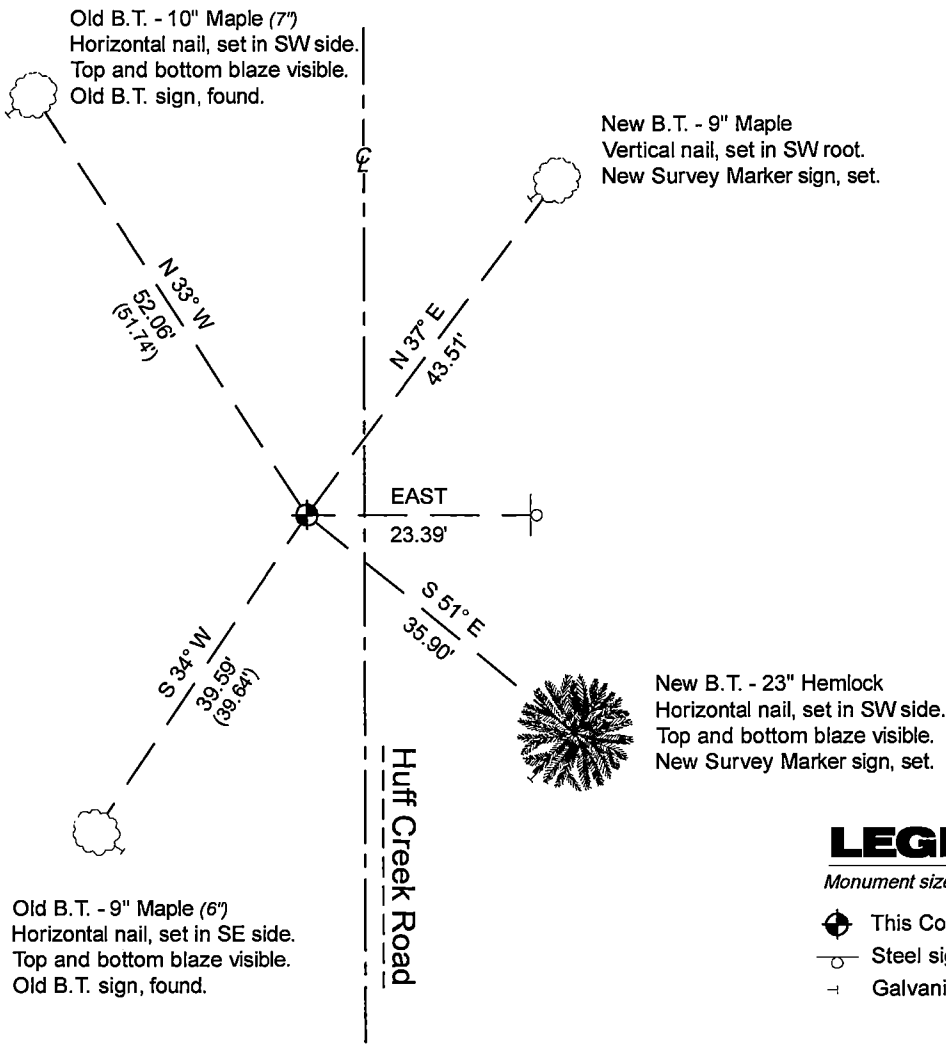
A-E 7.08(3)(b)

Original Surveyor: William E. Daugherty - June 5, 1865 to June 10, 1865  
Fir 8 - N 48° E, 35 Links, Hemlock 10 - S 70° E, 17 Links

See previous U.S. Public Land Survey Monument Record - V-23 - February 16, 1992 - Surveyor 1634 - Gary Lee Pisoni. THENCE:

April 30, 2025 - I found a 2.4" diameter aluminum pipe monument with no cap. The monument is right wheel track of the southbound lane of Huff Creek Road, and is bent south (damaged) ±5" above grade. I also found 3 of Pisoni's's bearing trees alive and in good condition. One of which is useless, as it is blocked by a new tree between it and the monument. I established 2 new reference monuments as shown below.

A-E 7.08(3)(c)(d) Plan view of corner with references to at least 4 witness monuments.

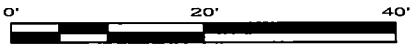


Bearings listed to the nearest second are referenced to the: Wisconsin County Coordinate Reference System, FOREST County Zone. All other bearings are magnetic.

LEGEND

Monument sizes = outside diameter measurements.

- ⊕ This Corner
- ⊖ Steel sign post, found ±23.5 feet east of Corner
- ⊙ Galvanized nail, set or nail found as shown



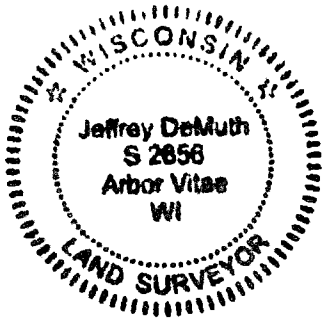
A-E 7.08(3)(e) 1865 Surveyor set a post, 1992 Surveyor set a 2 1/2" diameter aluminum pipe monument, with an aluminum cap stamped to identify corner. In 2025, I found a 2.4" diameter - damaged aluminum pipe monument without a cap.  
A-E 7.08(3)(f) I accept this monument in good faith as a FOUND PERPETUATED LOCATION of the corner.  
A-E 7.08(3)(g)(h) This corner was previously determined through lost-corner-proportionate methods.

A-E 7.08(3)(i) I, Jeffrey L. DeMuth, Professional Land Surveyor No. S-2656, hereby certify that the corner location on this record was determined by me or under my direction and control, and that this U.S. Public Land Survey Monument Record is correct and complete to the best of my knowledge, and belief.

SIGNATURE

May 16, 2025

DATE



4411425/0020

4411425 0020

V23

## U.S. PUBLIC LAND SURVEY MONUMENT RECORD

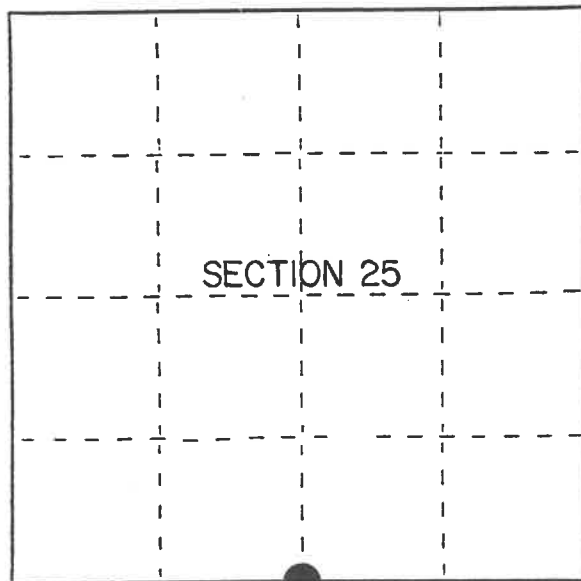
Index No. V-23

State of Wisconsin

County of Forest } ss.

I, Gary L. Pisoni, do hereby certify that on the 4th day of September, 1991, I found evidence of the South Quarter corner of Section 25 Township 41, North, Range 14 East, Fourth Principal Meridian, as described hereon; and that from this evidence I established a new monument and accessories as described hereon to perpetuate the original location of this corner.

Resident witnesses:



● = Corner monument restored.

## History of original corner establishment:

Original Government Survey in 1865 by William E. Daugherty. West corrected between Sections 25 and 36, at 40.23 chs., set Quarter Sections 25 and 36, from which the following bear;

Fir	8"	N48°E	35 lks.
Hemlock	10"	S70°E	17 lks.

## Description of corner evidence found:

No original corner evidence was recovered.

I restored the corner position at proportionate distance and on line between the Southwest and Southeast Section corners of Section 25.

## Description of monument and accessories I established to perpetuate the original location of this corner.

At the corner position, set a 2½ inch diameter aluminum pipe monument, 3 feet long, 3 inches above the ground, with an aluminum cap stamped; T41N R14E, 1/4, S25, S36, 1991, S-1634. From which the following new blazed and scribed bearing trees bear; (measurements taken to a nail in side of tree)

S. Maple	6"	N51°E	74.65 feet
Y. Birch	6"	S44°E	45.14 feet
S. Maple	6"	S34°W	39.64 feet
S. Maple	7"	N33°W	51.74 feet
Steel Sign Post		East	23.39 feet

Monument located in West lane of North-South Forest Service road.

Dated at Iron River, MI ~~xxxx~~ this 16th day of February, 1992

Signature Gary L. Pisoni Title Land Surveyor Registration No. S-1634  
(County Surveyor, Registered Land Surveyor, or other duly authorized official)

Office of Register of Deeds, County of Forest, I hereby certify that the within instrument was filed in this office for record on the 10th day of March, 1993 at 10:45 o'clock A M.

Paul Aschenbrenner  
(Register of Deeds)

By \_\_\_\_\_ Deputy

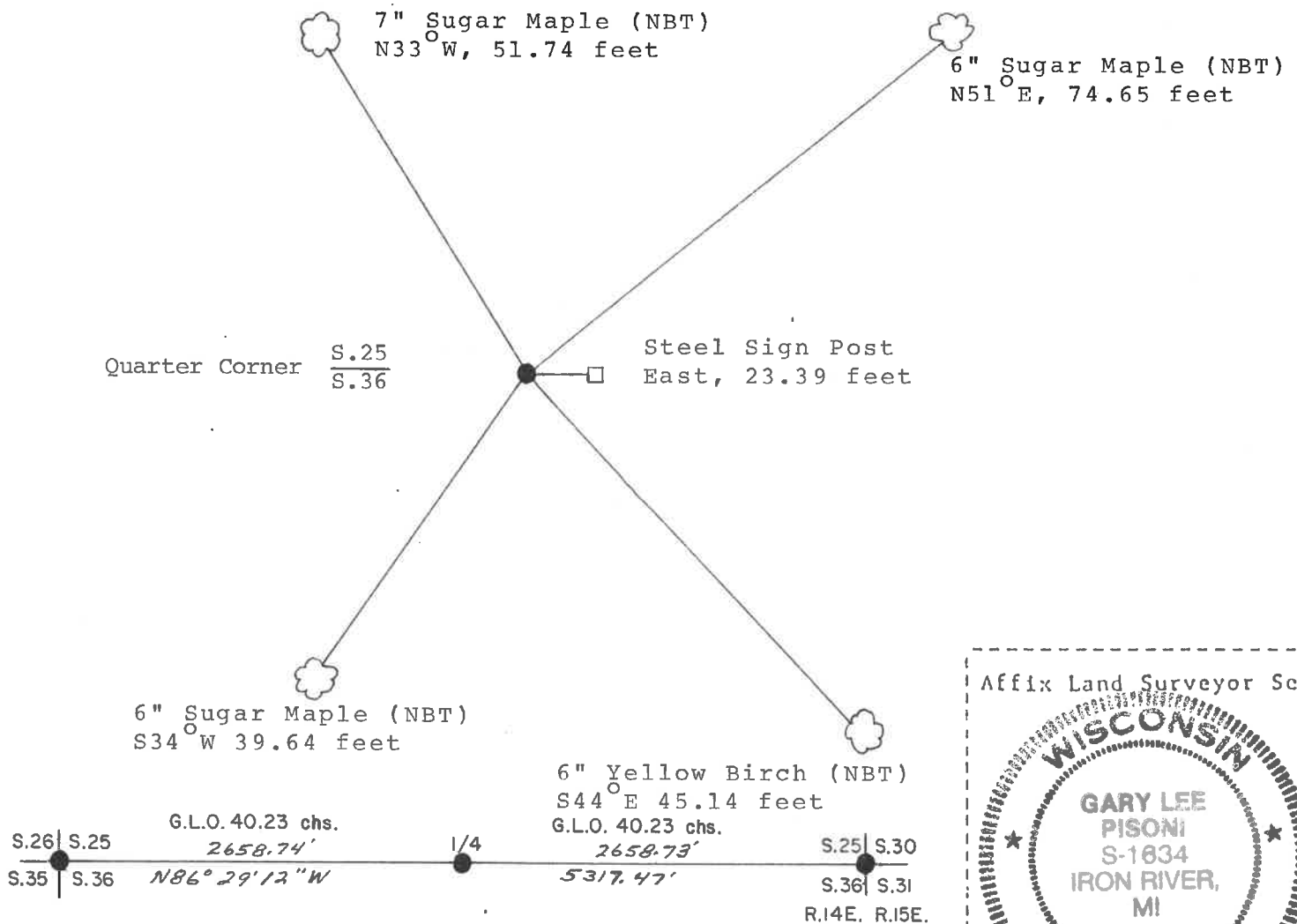
- e) Describe any material discrepancy between the location of the corner as restored or reestablished and the location of that corner as previously restored or reestablished by distance and direction. Show the discrepancy on the plan view drawing under (d), above. Show the distances between the corner as previously restored or reestablished and (1) the corner as restored or reestablished, and (2) to at least 2 of the witness monuments shown on the drawing in (d), above.

See drawing below.

- (f) Was the corner restored through acceptance of (1) an obliterated evidence location, or, (2) a found perpetuated location?

Restored through lost corner proportionate methods.

- (g&h) Was the corner reestablished through lost corner proportionate methods? If so, show the method, including the directions and distances to other public land survey corners used as evidence or used for proportioning in determining the corner location?  
Reestablished through lost corner proportionate methods.



- (i) I, Gary L. Pisoni  
(type or print name) certify that the corner location shown on this record was determined by me or under my direction and control and that this U.S. Public Land Survey Monument Record is correct and complete to the best of my knowledge and belief.

Gary L. Pisoni March 13<sup>th</sup> 1992  
Signature Date

Survey requested by; [Signature] 10/26/92  
District Ranger Date