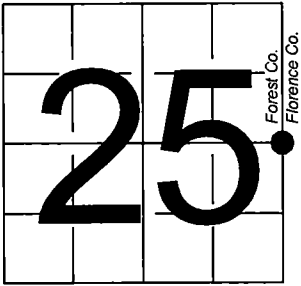


U.S. PUBLIC LAND SURVEY MONUMENT RECORD

NOTE: This form is intended and designed to fulfill all requirements of Wisconsin Administrative Code, Chapter A-E 7.08 U.S. Public Land Survey Monument Record (3) (a-i)

A-E 7.08(3)(a) Identity of corner:
East 1/4 Corner Section 25,
Township 41 North, Range 14 East
of the Fourth Principal Meridian,
Town of Alvin, Forest County,
Wisconsin

WISCRS - FOREST COUNTY
N: 728,716.898 USft (XXX,XXX.XXX)
E: 892,195.954 USft (XXX,XXX.XXX)
Datum: NAD83 (2011)
GNSS Method RTK
GNSS Control WISCORS VRS



R.14E
R.15E

The coordinate value shown has been verified by the average of two or more GPS observations at a markedly different time. Coordinates shown in parenthesis are previously published values.

A-E 7.08(3)(b)

Original Surveyor: William E. Daugherty - October 20, 1864 to October 24, 1864
Birch 15 - N 75° W, 17 Links, Sugar 12 - S 15° E, 37 Links

See previous U.S. Public Land Survey Monument Record - T-25 - February 16, 1992 - Surveyor 1634 - Gary Lee Pisoni. THENCE:

April 30, 2025 - In performing the 2024 - Forest County - "PLSS Corner Remonumentation and GPS Services" project, I found a 2.4" diameter galvanized iron pipe monument with a 3" diameter brass cap stamped to identify the corner. The monument is on highland, in a rock mound, and extends ±14" above grade. I also found 4 of existing bearing trees alive and in good condition.

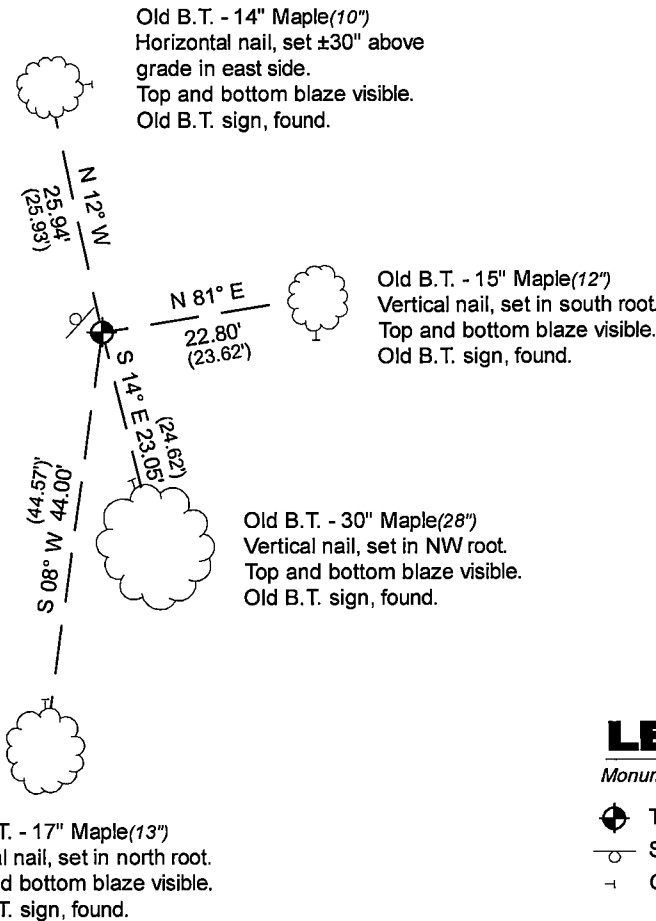
3 - Jean F. Resvick - July 1973

1 - Gary Lee Pisoni - February 1992

I established 0 new reference monuments as shown below.

A-E 7.08(3)(c)(d) Plan view of corner with references to at least 4 witness monuments.

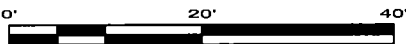
Bearings listed to the nearest second are referenced to the: Wisconsin County Coordinate Reference System, FOREST County Zone. All other bearings are magnetic.



LEGEND

Monument sizes = outside diameter measurements.

- This Corner
- Steel post, found ±1 foot NW of Corner
- Galvanized nail, set or nail found as shown



A-E 7.08(3)(e) 1864 Surveyor set a post, 1973 Surveyor set a galvanized wrought iron pipe monument, with a brass cap stamped to identify corner, 1992 Surveyor found the same, as did I in 2025.

A-E 7.08(3)(f) I accept this monument in good faith as a FOUND PERPETUATED LOCATION of the corner.

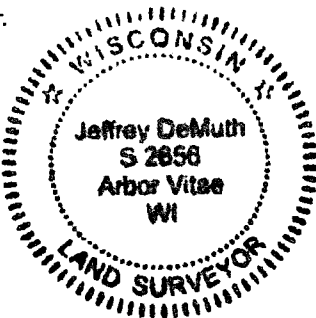
A-E 7.08(3)(g)(h) This corner was not determined through lost-corner-proportionate methods.

A-E 7.08(3)(i) I, Jeffrey L. DeMuth, Professional Land Surveyor No. S-2656, hereby certify that the corner location on this record was determined by me or under my direction and control, and that this U.S. Public Land Survey Monument Record is correct and complete to the best of my knowledge, and belief.

SIGNATURE

May 16, 2025

DATE



44114252000

44114252000

T25

CERTIFIED LAND CORNER RESTORATION

State of Wisconsin

County of Forest

ss.

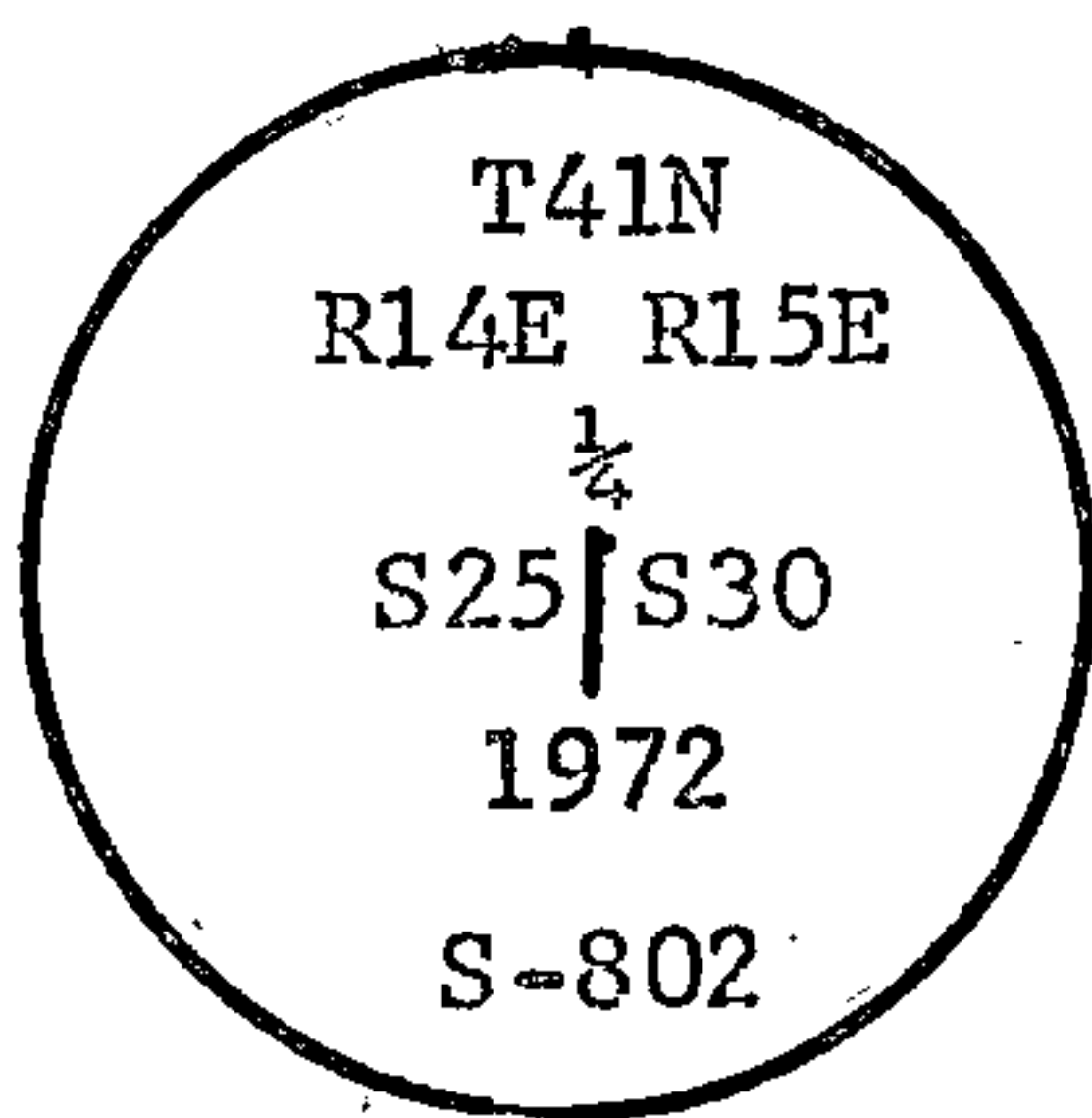
I, Jean F. Resvick, do hereby certify that on the 10th day of May, 1973, I found evidence of the East quarter corner of Section 25 Township 41 North, Range 14 East, Fourth Principal Meridian, as described hereon; and that from this evidence I established a new monument and accessories as described hereon to perpetuate the original location of this corner:

Description of original monument and accessories and subsequent restorations:

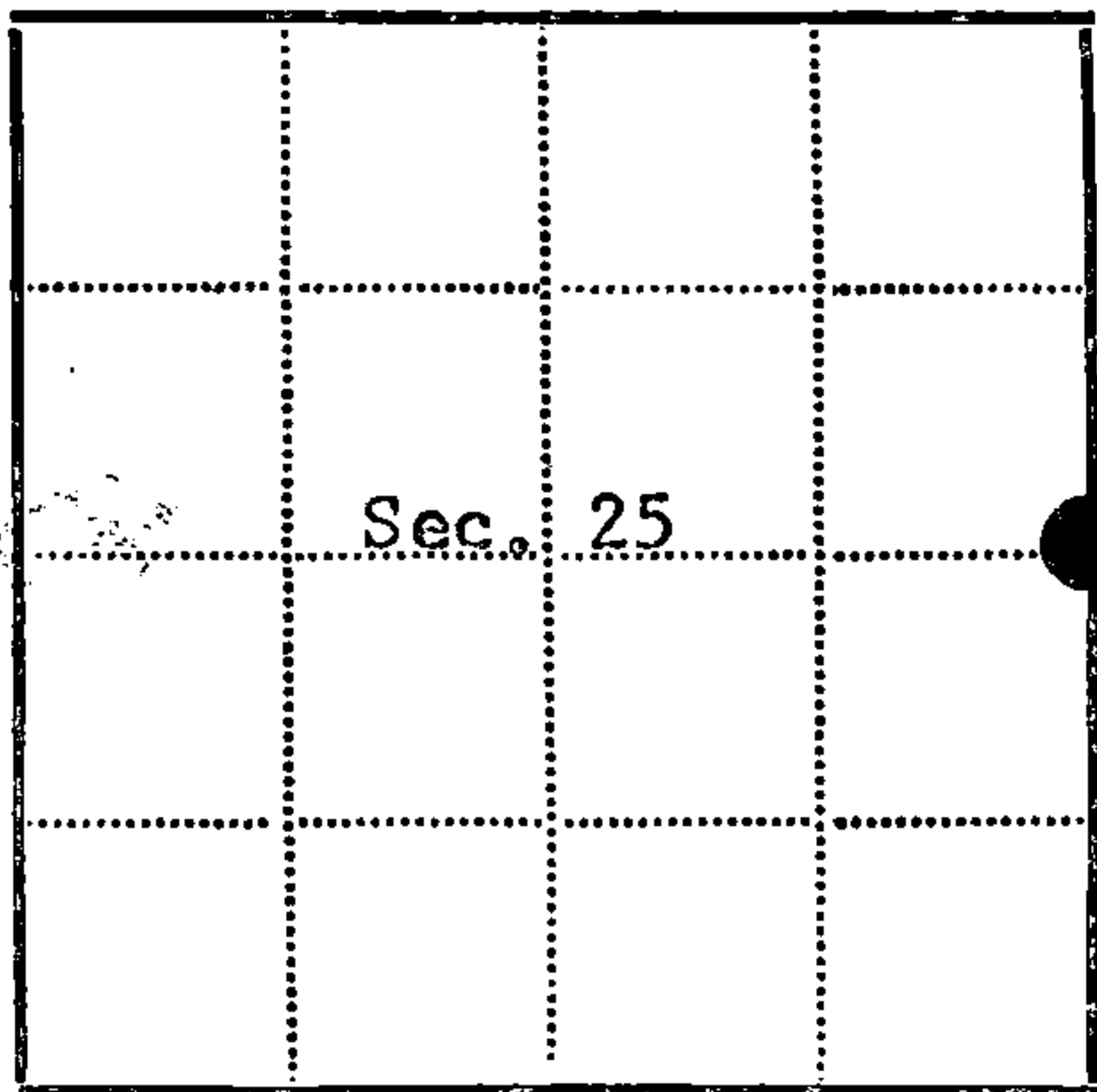
Surveyed in 1864 by William E. Daugherty
40.00 chains north between Section 25 and 30, set post
Birch 15, N75W, 17 lks.
Sugar 12, S15E, 37 lks.

Description of corner evidence found:

Forest Service location posters on Birch and Cedar.
Poster on Cedar dated 8/4/34
Birch 29 inch diameter, has old blazes but has been dug into, no scribing found
Sugar 24 inch diameter, has old blazes healed over, tree is hollow but could have overgrowth evidence if cut open.
2 old scribed post lying by Birch
Old post standing.
Station point which bears S75E, 17 lks. from Birch 29" and N15W, 37 lks. from Sugar 24"
Post found bears southwest 4 feet.
Description of monument and accessories I established to perpetuate the location of this corner:
At the recorder bearing a distance from bearing trees, set a 2 inch inside diameter, galvanized wrought iron pipe, 5 feet long filled with concrete, with brass cap stamped.



From which the following new blazed and scribed bearing trees bear:
Sugar 10, S6W, 44.57 feet
Sugar 8, N79E, 23.59 feet
Set galvanized sign post 1 foot northwest of Monument
Old post bears 4 feet southwest of Monument.



● = Corner monument restored
□ =

Resident witnesses
Dated at Rhineland Wisconsin, this 27th day of July, 1973.
Signature Jean F. Resvick Title Land Surveyor
(County Surveyor, Registered Land Surveyor, or other duly authorized official)
Surveyors Registration No. S-802 DOCUMENT NUMBER 104457
Office of Register of Deeds County of Forest
I hereby certify that the within instrument was filed in this office for record on the 13th day of November, 1973, and was filed in Book No. T-25 of County Records.
Signature Eugene Staszny Title Register of Deeds



Township 41 North, Range 14 East, Section 25, Index No. T-25, Page No.

44114252000

125

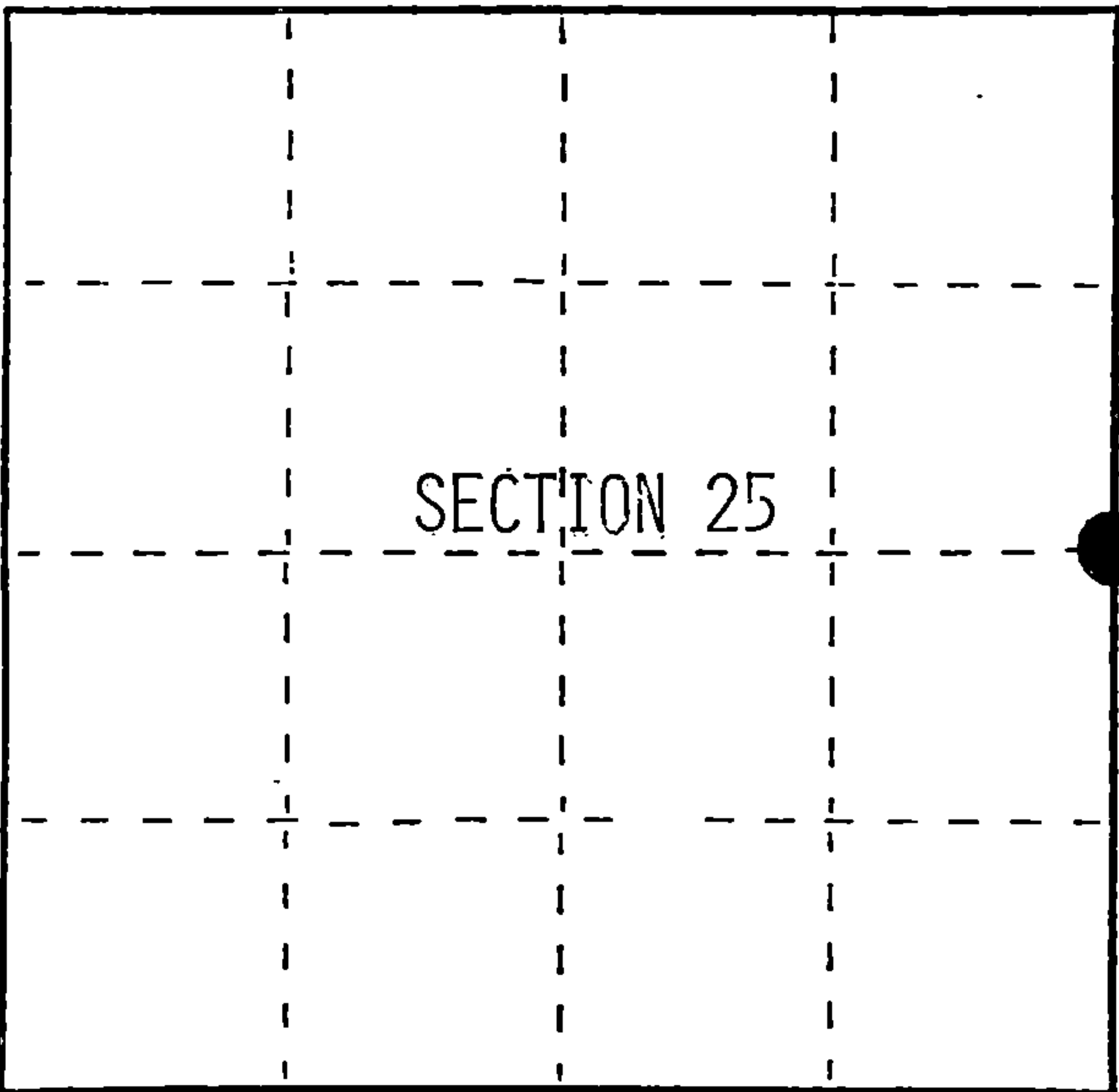
U.S. PUBLIC LAND SURVEY MONUMENT RECORD

Index No. T-25

State of Wisconsin }
County of Forest ss.

I, Gary L. Pisoni, do hereby
certify that on the 10th day
of February, 1992, I found
evidence of the East Quarter
corner of Section 25
Township 41 North, Range
14 East, Fourth Principal Meridian,
as described hereon; and that from this evidence
I established a new monument and accessories
as described hereon to perpetuate the original
location of this corner.

Resident witnesses:



○ = Corner monument restored.

History of original corner establishment:

In 1973, Jean Resvick, a Land Surveyor with the Forest Service, restored the corner position using original bearing tree evidence. He set a 2 inch inside diameter galvanized wrought iron pipe, 5 feet long, with a brass cap stamped; T41N, R14E, R15E, 1/4, S25, S30, 1972, S-802. From which the following bear;

Sugar	10"	S06°W	44.57 feet
Sugar	8"	N79°E	23.59 feet
Galvanized Iron Sign Post		Northwest	1.00 feet
Old Post		Southwest	4.00 feet

Description of corner evidence found:

Found monument as described and in place, from which the following bear;

S. Maple	12"	N81°E	23.62 feet
S. Maple	28"	S14°E	24.62 feet
S. Maple	13"	S08°W	44.57 feet
Y. Birch	26"	N74°W	11.30 feet
Steel Sign Post		N36°W	0.90 feet

Description of monument and accessories I established to perpetuate the original location of this corner.

Blazed and scribed a new bearing tree; (measurement taken to a nail in side of tree)

S. Maple	10"	N12°W	25.93 feet
----------	-----	-------	------------

Dated at Iron River, MI, Wis., this 16th day of February, 1992

Signature Gary L. Pisoni Title Land Surveyor Registration No. S-1634
(County Surveyor, Registered Land Surveyor, or other duly authorized official)

Office of Register of Deeds, County of Forest, I hereby certify that the within instrument was filed in this office for record on the 12th day of August, 1993 at 1:25 o'clock P. M.

By (Register of Deeds) Deputy

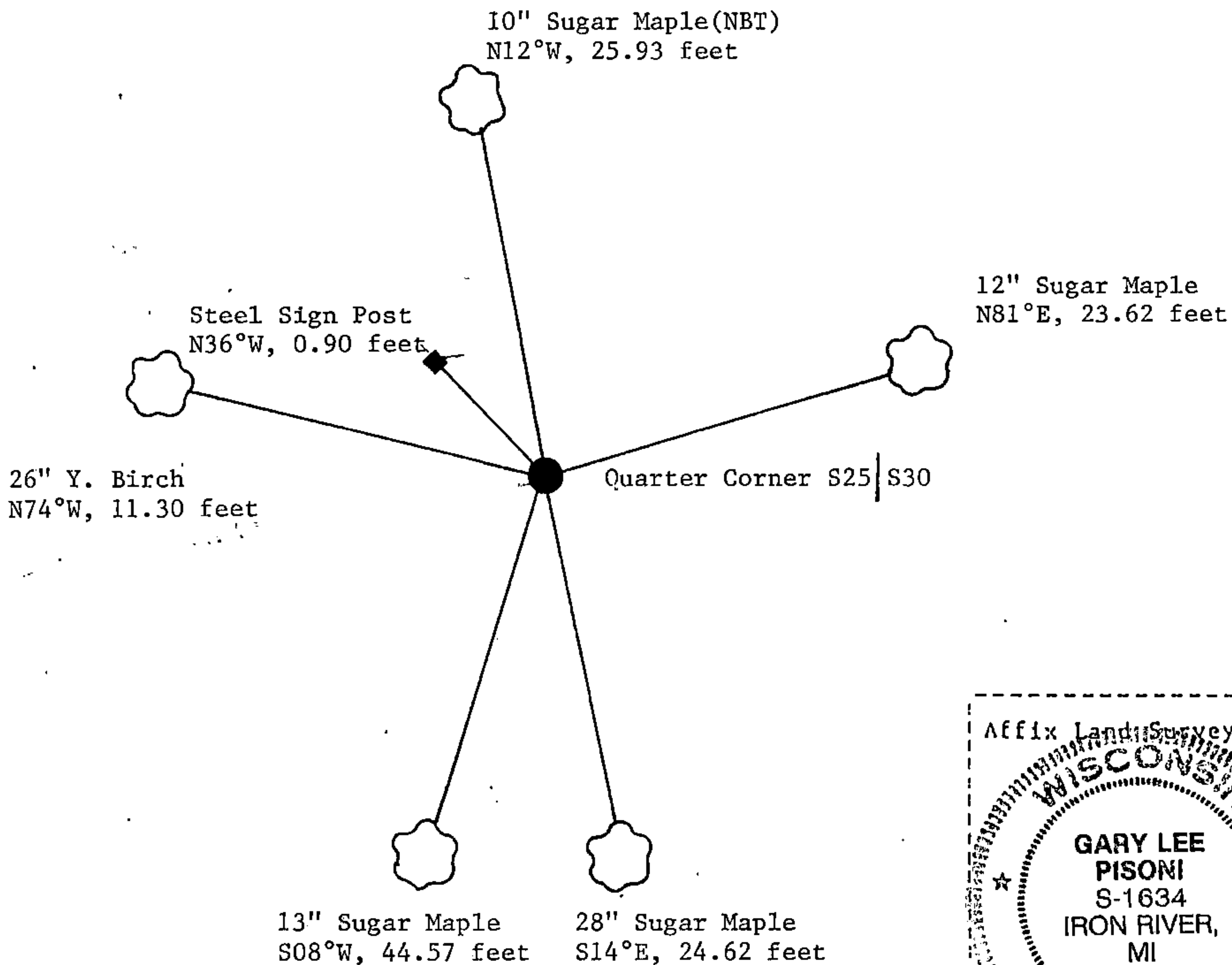
44114 252000

(e) Describe any material discrepancy between the location of the corner as restored or reestablished and the location of that corner as previously restored or reestablished by distance and direction. Show the discrepancy on the plan view drawing under (d), above. Show the distances between the corner as previously restored or reestablished and (1) the corner as restored or reestablished, and (2) to at least 2 of the witness monuments shown on the drawing in (d), above.

(f) Was the corner restored through acceptance of (1) an obliterated evidence location, or, (2) a found perpetuated location?

Restored through acceptance of a found perpetuated location.

(g&h) Was the corner reestablished through lost corner proportionate methods? If so, show the method, including the directions and distances to other public land survey corners used as evidence or used for proportioning in determining the corner location?



(i) I, Gary L. Pisoni
(type or print name) certify that the corner location shown on this record was determined by me or under my direction and control and that this U.S. Public Land Survey Monument Record is correct and complete to the best of my knowledge and belief.

Gary L. Pisoni Jan 12, 1993
Signature Date