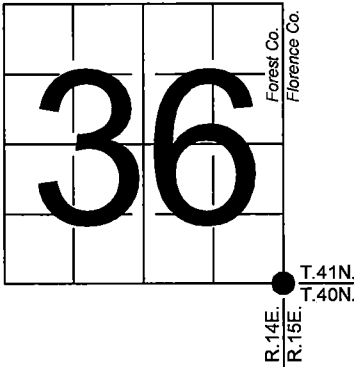


U. S. PUBLIC LAND SURVEY MONUMENT RECORD

NOTE: This form is intended and designed to fulfill all requirements of Wisconsin Administrative Code, Chapter A-E 7.08 U.S. Public Land Survey Monument Record (3) (a-i)

A-E 7.08(3)(a) Identity of corner:
Southeast Corner Section 36,
Township 41 North, Range 14 East
of the Fourth Principal Meridian,
Town of Alvin, Forest County,
Wisconsin

WISCRS - FOREST COUNTY
N: 720,837.361 USft (XXX,XXX.XXX)
E: 892,052.820 USft (XXX,XXX.XXX)
Datum: NAD83 (2011)
GNSS Method RTK
GNSS Control WISCRS VRS



The coordinate value shown has been verified by the average of two or more GPS observations at a markedly different time. Coordinates shown in parenthesis are previously published values.

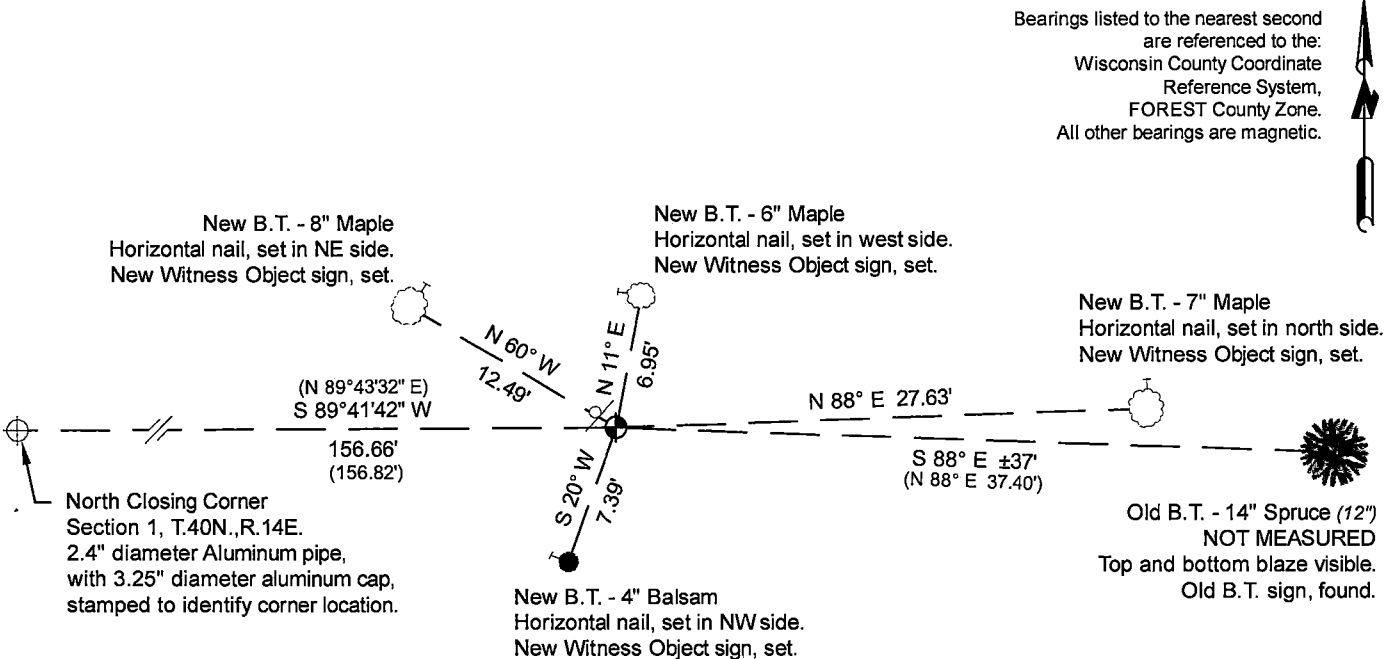
A-E 7.08(3)(b)

Original Surveyor: Artemas Curtis - July 1858
Yellow Birch 7 - N 24° W, 21 Links, Yellow Birch 20 - N 37° E, 25 Links

See previous U.S. Public Land Survey Monument Record - Z-25 - December 23, 1985 - Surveyor 1107 - William B. Cochrane. THENCE:

December 17, 2024 - In performing the 2024 - Forest County - "PLSS Corner Remonumentation and GPS Services" project, I found a 6" diameter concrete monument with a 2.5" diameter brass cap stamped to identify the corner. The monument is on west slope of a hill and is flush with grade. I also found 1 of Cochrane's bearing trees dead and standing. I established 4 new reference monuments as shown below.

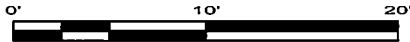
A-E 7.08(3)(c)(d) Plan view of corner with references to at least 4 witness monuments.



LEGEND

Monument sizes = outside diameter measurements.

- ⊕ This Corner
- Steel sign post, found ±0.6 foot NW of Corner
- Galvanized nail, set or nail found as shown



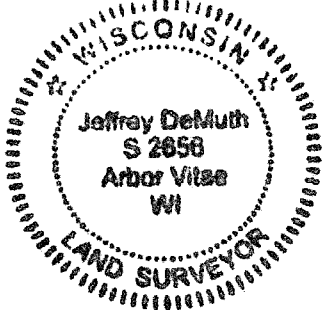
A-E 7.08(3)(e) 1858 Surveyor set a post, 1985 Surveyor found a 6" diameter concrete monument with a brass cap stamped to identify corner. In 2024, I found a 6" diameter concrete monument with a 2.5" diameter brass cap stamped to identify the corner.

A-E 7.08(3)(f) I accept this monument in good faith as a FOUND PERPETUATED LOCATION of the corner.
A-E 7.08(3)(g)(h) This corner was previously determined through lost-corner-proportionate methods.

A-E 7.08(3)(i) I, Jeffrey L. DeMuth, Professional Land Surveyor No. S-2656, hereby certify that the corner location on this record was determined by me or under my direction and control, and that this U.S. Public Land Survey Monument Record is correct and complete to the best of my knowledge, and belief.

SIGNATURE

December 23, 2024
DATE



44114360000

4411360000

Z25

U.S. PUBLIC LAND SURVEY MONUMENT RECORD

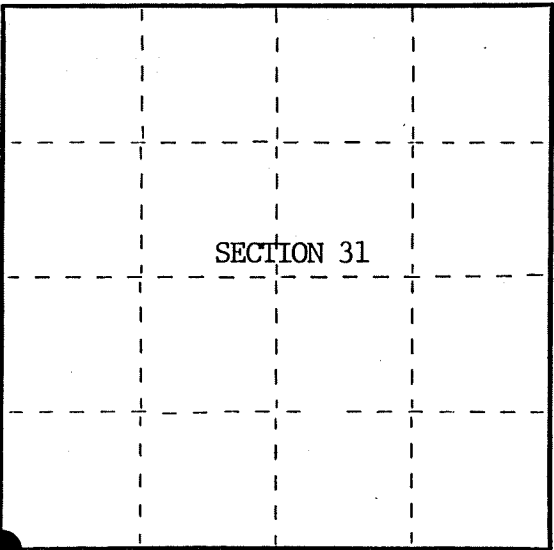
Index No. Z-1

State of Wisconsin }
County of Florence } ss.

I, William B. Cochran, do hereby
certify that on the 23rd day
of August, 19 84, I found
evidence of the Southwest Standard Section
corner of Section 31
Township 41 North, Range
15 East, Fourth Principal Meridian,
as described hereon; and that from this evidence
I established a new monument and accessories
as described hereon to perpetuate the original
location of this corner.

Resident witnesses:

Tony Tillman



○ = Corner monument restored.

History of original corner establishment:

Original Government Survey in 1858 by Artemas Curtis. Dependent Resurvey in 1945 by
Hugh Crawford. East on the South side of Section 36, 79.48 chains, set a 6" diameter
concrete monument, 2 feet long, 1½ feet in the ground, with a brass cap mkd; S.C., T41N,
R14E, R15E, S36, S31, 1945. From which the following bear;

| | | | |
|--------|----|----------|---------|
| Poplar | 5" | N21°00'E | 21 lks. |
| Poplar | 6" | N31°30'W | 20 lks. |

Description of corner evidence found:

Monument as described and in place.

Description of monument and accessories I established to perpetuate the original location of this corner.

Blazed and scribed the following new bearing trees;

| | | | |
|-----------------|-----|-------|------------|
| Spruce | 12" | N88°E | 37.40 feet |
| Spruce | 7" | N32°W | 24.83 feet |
| Steel Sign Post | | NW | 0.50 feet |

Dated at Hiles, Wis., this 23rd day of December, 19 85.

Signature William B. Cochran Title Land Surveyor Registration No. S-1107
(County Surveyor, Registered Land Surveyor, or other duly authorized official)

Office of Register of Deeds, County of _____, I hereby certify that the within
instrument was filed in this office for record on the _____ day of _____, 19____
at _____ o'clock _____ M.

(Register of Deeds)

By _____ Deputy

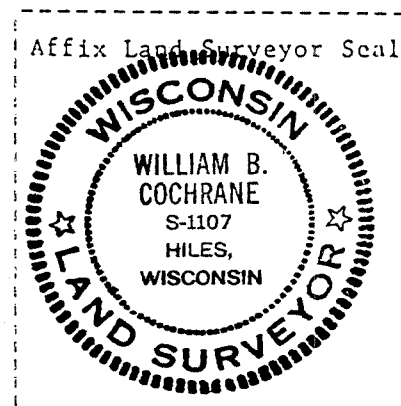
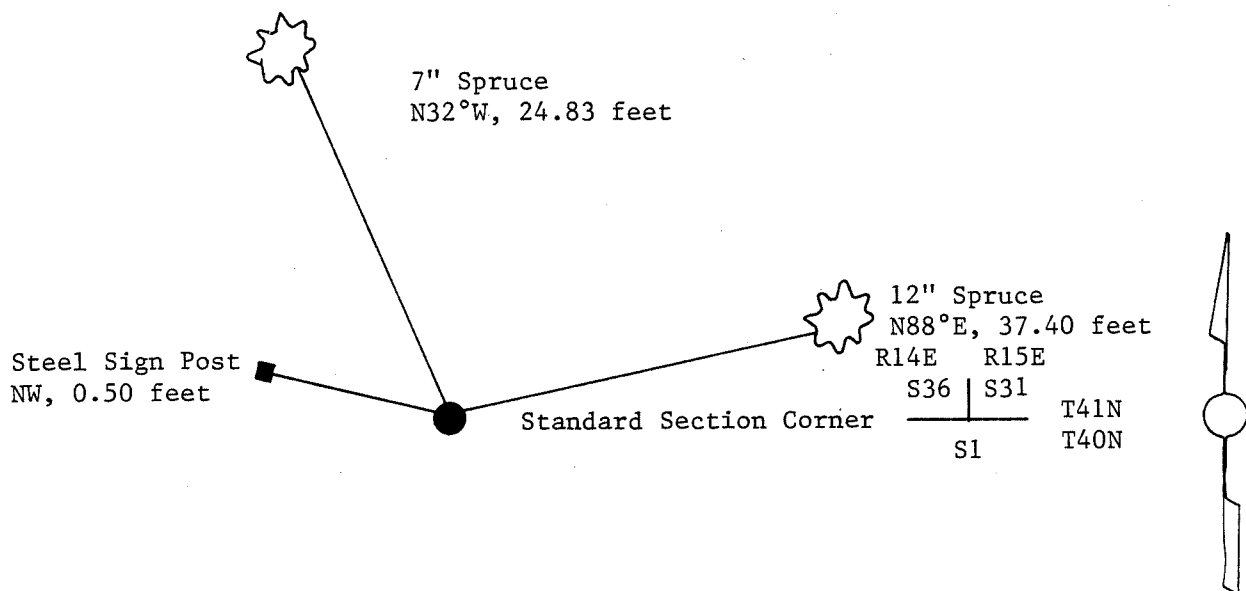
(e) Describe any material discrepancy between the location of the corner as restored or reestablished and the location of that corner as previously restored or reestablished by distance and direction. Show the discrepancy on the plan view drawing under (d), above. Show the distances between the corner as previously restored or reestablished and (1) the corner as restored or reestablished, and (2) to at least 2 of the witness monuments shown on the drawing in (d), above.

See drawing below.

(f) Was the corner restored through acceptance of (1) an obliterated evidence location, or, (2) a found perpetuated location?

Restored through acceptance of a found perpetuated location.

(g&h) Was the corner reestablished through lost corner proportionate methods? If so, show the method, including the directions and distances to other public land survey corners used as evidence or used for proportioning in determining the corner location?



(i) I, William B. Cochrane
(type or print name) certify that the corner location shown on this record was determined by me or under my direction and control and that this U.S. Public Land Survey Monument Record is correct and complete to the best of my knowledge and belief.

William B. Cochrane October 8, 1986
Signature Date

Certificate ready for filing:

[Signature]
District Ranger

3-9-87
Date

U.S. PUBLIC LAND SURVEY MONUMENT RECORD

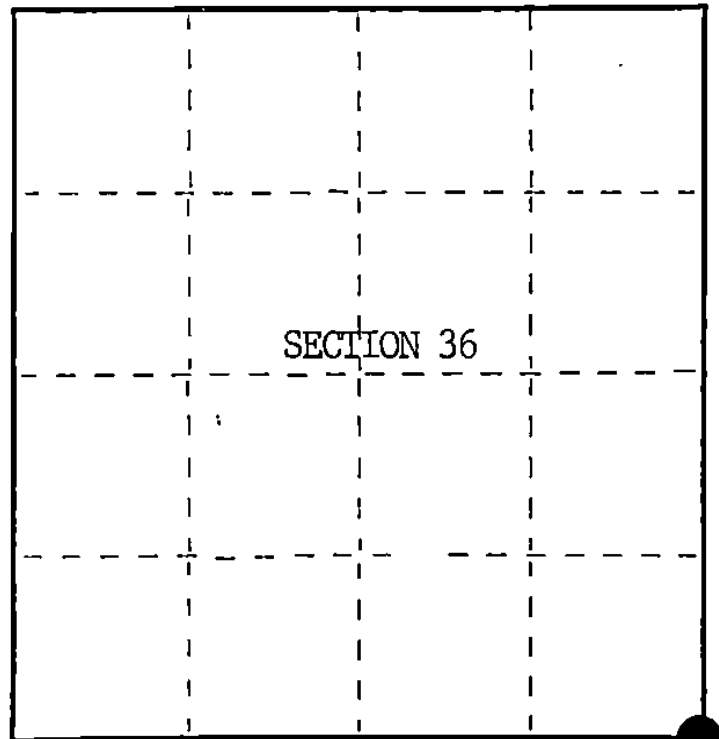
Index No. Z-25

State of Wisconsin }
County of Forest } ss.

I William B. Cochrane, do hereby
certify that on the 23rd day
of August, 1984, I found
evidence of the Southeast Standard Section
corner of Section 36
Township 41 North, Range
14 East, Fourth Principal Meridian,
as described hereon; and that from this evidence
I established a new monument and accessories
as described hereon to perpetuate the original
location of this corner.

Resident witnesses:

Tony Tillman



○ = Corner monument restored.

History of original corner establishment:

Original Government Survey in 1858 by Artemas Curtis. Dependent Resurvey in 1945 by
Hugh Crawford. East on the South side of Section 36, 79.48 chains, set a 6" diameter
concrete monument, 2 feet long, 1½ feet in the ground, with a brass cap mkd; S.C., T41N,
R14E, R15E, S36, S31, 1945. From which the following bear;

| | | | |
|--------|----|----------|---------|
| Poplar | 5" | N21°00'E | 21 lks. |
| Poplar | 6" | N31°30"W | 20 lks. |

Description of corner evidence found:

Monument as described and in place.

Description of monument and accessories I established to perpetuate the original location of this corner.

Blazed and scribed the following new bearing trees;

| | | | |
|-----------------|-----|-------|------------|
| Spruce | 12" | N88°E | 37.40 feet |
| Spruce | 7" | N32°W | 24.83 feet |
| Steel Sign Post | | NW | 0.50 feet |

Dated at Hiles, Wis., this 23rd day of December, 1985.

Signature William B. Cochrane Title Land Surveyor Registration No. S-1107
(County Surveyor, Registered Land Surveyor, or other duly authorized official)

Office of Register of Deeds, County of Forest, I hereby certify that the within
instrument was filed in this office for record on the 11th day of March, 1987.
at 3:30 o'clock P. M.

Paul Aschenbrenner
(Register of Deeds)

By Deputy

FORM NO. 985-A
H.C. Miller Company

Stock No. 26273

DOCUMENT NUMBER 132474

44114360000

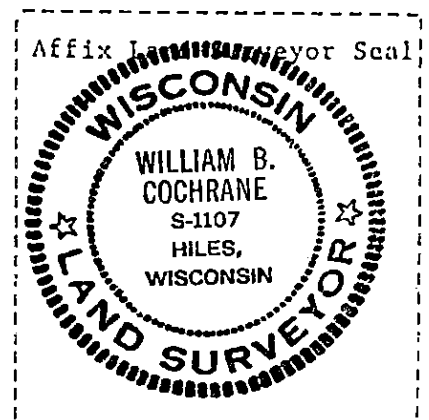
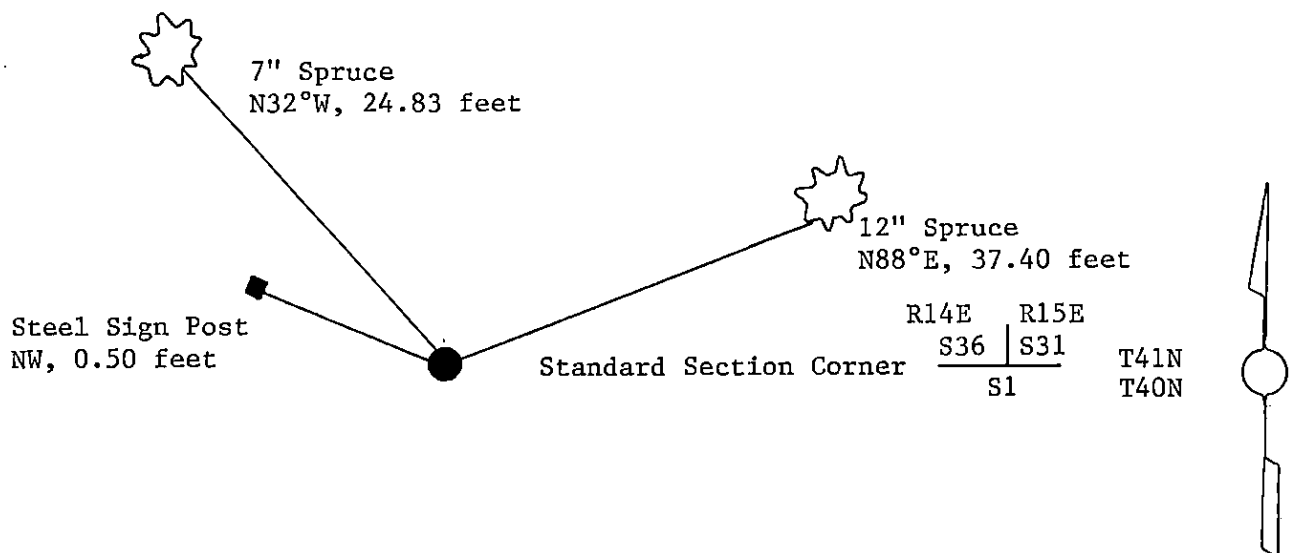
(e) Describe any material discrepancy between the location of the corner as restored or reestablished and the location of that corner as previously restored or reestablished by distance and direction. Show the discrepancy on the plan view drawing under (d), above. Show the distances between the corner as previously restored or reestablished and (1) the corner as restored or reestablished, and (2) to at least 2 of the witness monuments shown on the drawing in (d), above.

See drawing below.

(f) Was the corner restored through acceptance of (1) an obliterated evidence location, or, (2) a found perpetuated location?

Restored through acceptance of a found perpetuated location.

(g&h) Was the corner reestablished through lost corner proportionate methods? If so, show the method, including the directions and distances to other public land survey corners used as evidence or used for proportioning in determining the corner location?



(i) I, William B. Cochrane
(type or print name) certify that the corner location shown on this record was determined by me or under my direction and control and that this U.S. Public Land Survey Monument Record is correct and complete to the best of my knowledge and belief.

William B. Cochrane October 8, 1986
Signature Date

Certificate ready for filing: [Signature] 3-9-87
District Ranger Date