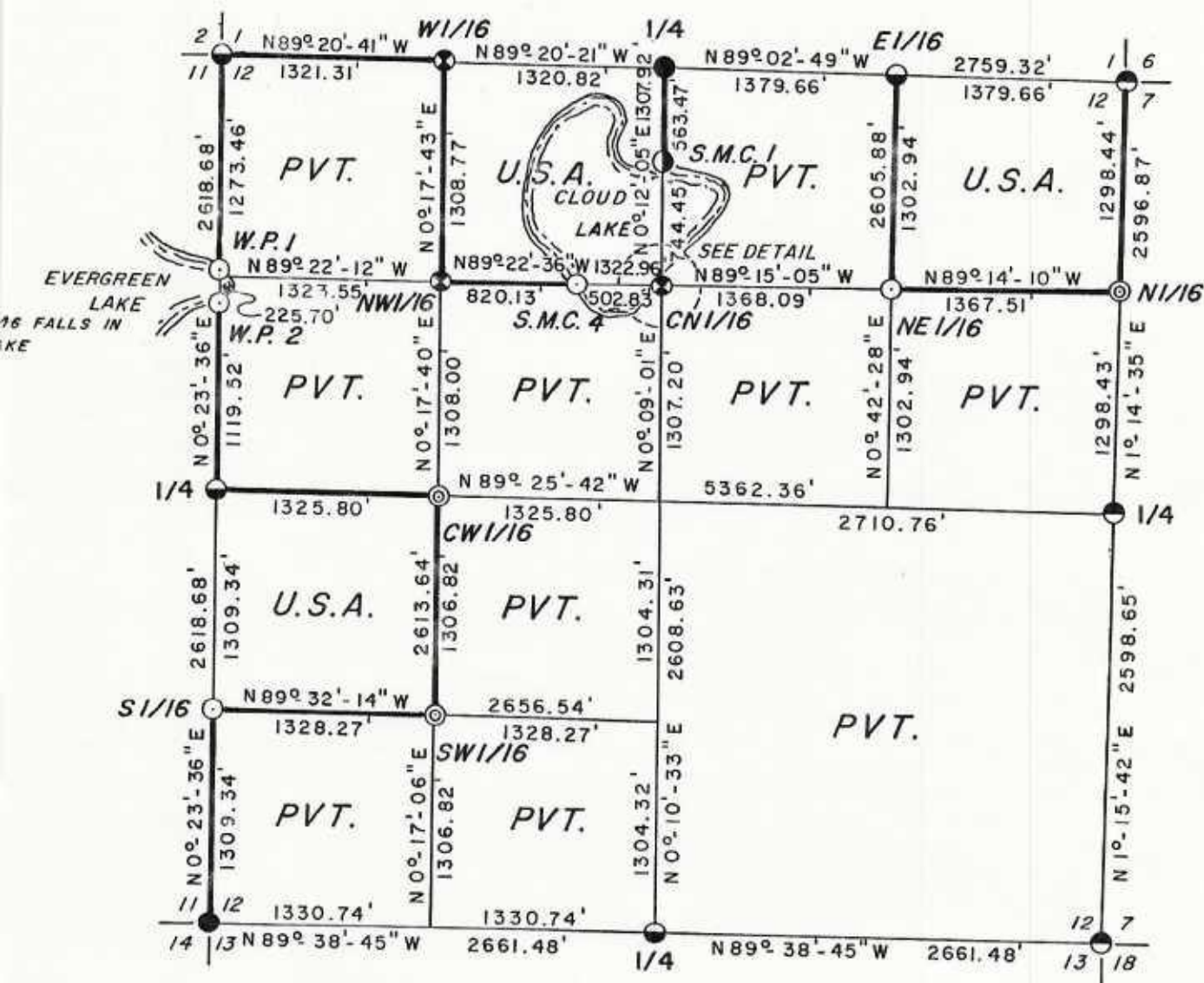
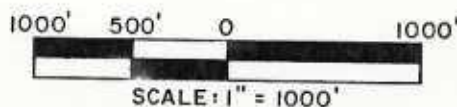


FOREST CO SURVEYOR
FILE # 341612-19870226
DATE _____ BY _____

PLAT OF SURVEY U.S. GOVERNMENT LAND

BEING THE NE 1/4 OF THE NW 1/4, THE NE 1/4 OF THE NE 1/4
& THE NW 1/4 OF THE SW 1/4 OF SECTION 12, TOWNSHIP
34 NORTH, RANGE 16 EAST, FOURTH PRINCIPAL MERIDIAN,
FOREST COUNTY, WISCONSIN.

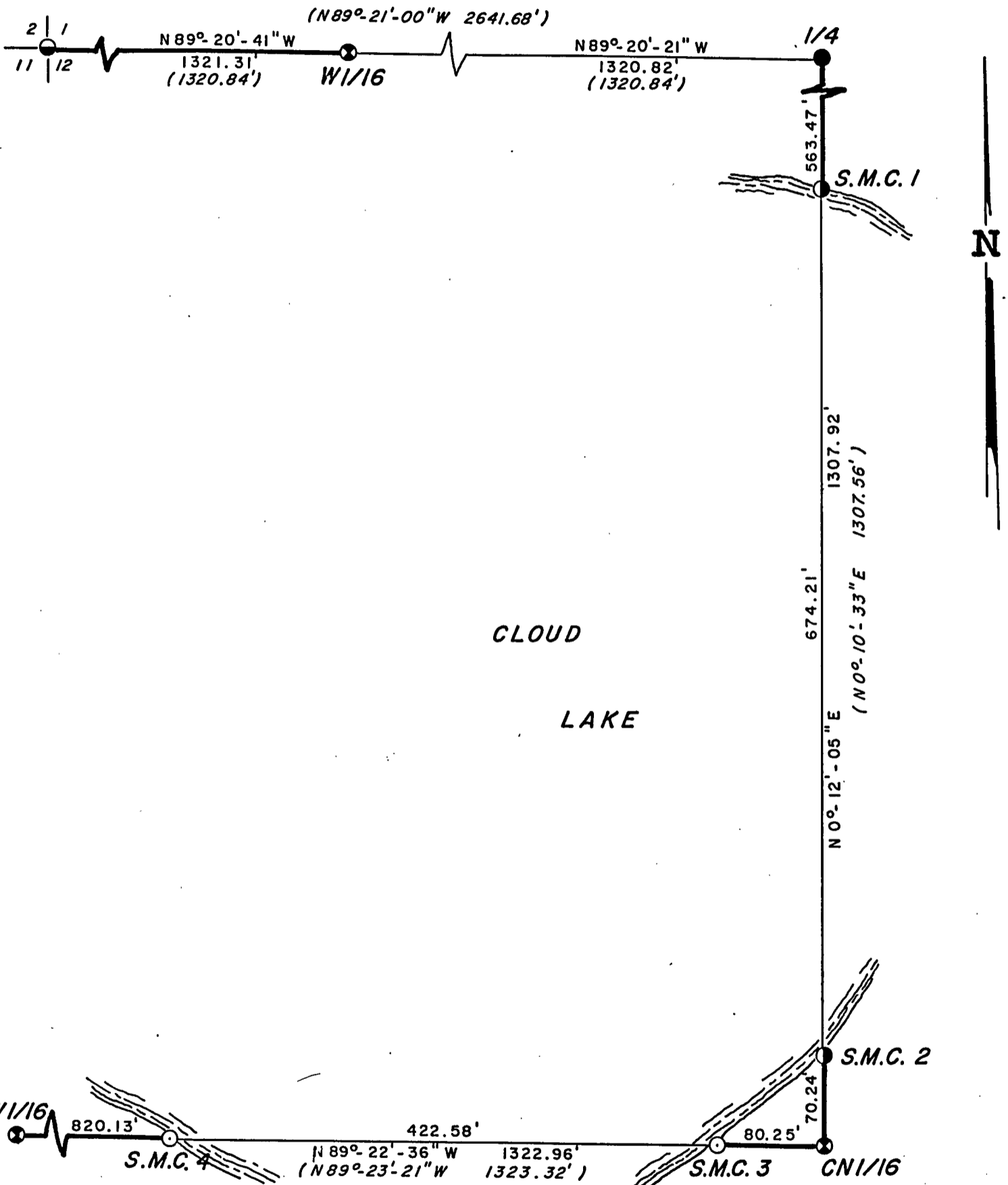


Conversion Factors:
Feet to Meters 0.304801
Meters to Feet 3.280833

LEGEND

- U.S.F.S. iron pipe brass cap monument
- U.S.F.S. aluminum monument
- Marinette County capped monument
- ⊗ Bureau of Land Management aluminum monument
- U.S.F.S. aluminum monument
- ⊙ 2 1/2" x 60" aluminum monument set this survey.
- ⊙ 2 1/2" x 36" aluminum monument set this survey.
- Boundary of U.S. Government land, marked and posted to U.S.F.S. standards.

DETAIL



LEGEND

- U.S.F.S. iron pipe brass cap monument
- U.S.F.S. aluminum monument
- ⊗ Bureau of Land Management aluminum monument
- ⊙ U.S.F.S. aluminum monument
- ⊙ $2\frac{1}{2}'' \times 36''$ aluminum monument set this survey.
- SCALE: $1'' = 100'$
- () U.S.F.S. calculated bearing & distance from section subdivision.

SURVEY NOTES

This survey was made by Soder Surveying, pursuant to United States Department of Agriculture, Forest Service Contract #53-56A6-6-00011, True Line Survey for the purpose of marking and perpetuating the exterior and interior boundary lines of the U.S. Government land on the perimeter and within Section 12, T34N, R16E, Forest County, Wisconsin as shown on the plat herewith.

The U.S. Government lands in this section were aquired in 1934 and 1967.

The original Government subdivision survey of this township was made by James McBride in 1858.
South and West lines by Artemus Curtis in 1857.

The corner positions recovered, restored, and established by this survey are marked by the monument described in the map legend.

The corner positions established were located to an accuracy of one part in 3000.

The bearings between corner positions are true bearings as determined by solar observations.

The field notes of this survey and a copy of this plat are on file in the Forest Supervisor's Office in Rhinelander, WI.

Corners Recovered

1. Section Corner to Sections 2, 1, 11 & 12, T34N, R16E
Document #127261 in Forest County Register of Deeds.
2. Section Corner to Sections 1, 6, 12 & 7, T34N, R16E
Document #127262 in Forest County Register of Deeds.
3. Section Corner to Sections 12, 7, 13 & 18, T34N, R16E
Document #109578 in Forest County Register of Deeds.
4. Section Corner to Sections 11, 12, 14 & 13, T34N, R16E
Document #118066 in Forest County Register of Deeds.
5. Quarter Corner to Sections 1 & 12, T34N, R16E
Document #105092 in Forest County Register of Deeds.
6. Quarter Corner to Sections 12 & 7, T34N, R16E
Document #127269 in Forest County Register of Deeds.
7. Quarter corner to Sections 12 & 13, T34N, R16E
Document #127282 in Forest County Register of Deeds.

Corners Recovered Cont.

8. Quarter Corner to Sections 11 & 12, T34N, R16E
Document #127268 in Forest County Register of Deeds.
9. Center North One-Sixteenth Corner to Section 12, T34N, R16E
Department of Interior, Bureau of Land Management 2½"
Aluminum monument set in 1984.
10. Northwest One-Sixteenth Corner to Section 12, T34N, R16E
Department of Interior, Bureau of Land Management 2½"
Aluminum monument set in 1984.
11. West One-Sixteenth Corner to Section 12, T34N, R16E
Department of Interior, Bureau of Land Management 2½"
Aluminum monument set in 1984.
12. #1 Special Meander Corner to Section 12, T34N, R16E
U.S.F.S. 2½" Aluminum monument found in place.
13. #2 Special Meander Corner to Section 12, T34N, R16E
U.S.F.S. 2½" Aluminum monument found in place.

Corners Established

1. Northeast One-Sixteenth Corner to Section 12, T34N, R16E
Corner established at the intersection of the North and East one-sixteenth lines of Section 12.

Maple 10" N 7° E 15.93 feet
Maple 6" S 62° E 20.65 feet
Steel Sign Post North 0.75 feet
2. North One-Sixteenth Corner to Section 12, T34N, R16E
Corner established proportionately and on line between the East one-quarter corner and the Northeast corner of Section 12.

Tamarack 11" S 55° W 19.06 feet
Tamarack 12" N 40° W 25.89 feet
Steel Sign Post North 0.82 feet
3. Center West One-Sixteenth Corner to Section 12, T34N, R16E
Corner established proportionately and on line between the Center one-quarter corner and the West one-quarter corner of Section 12.

Tamarack 13" S 71° E 39.50 feet
Tamarack 10" S 8° W 87.92 feet
Steel Sign Post West 1.00 feet

Corners Established Cont.

4. Southwest One-Sixteenth Corner to Section 12, T34N, R16E
Corner established at the intersection of the South and West one-sixteenth lines of Section 12.

Tamarack	5"	N 29° W	23.75 feet
W. Pine	8"	S 57° E	56.16 feet
Steel Sign Post		West	0.93 feet

5. South One-Sixteenth Corner to Section 12, T34N, R16E
Corner established proportionately and on line between the West one-quarter corner and the Southwest corner of Section 12.

Maple	5"	S 61° W	10.07 feet
Maple	5"	S 29° E	20.23 feet
Steel Sign Post		South	0.83 feet

6. #3 Special Meander Corner to Section 12, T34N, R16E
Corner established on line between the Center North one-sixteenth and the Northwest one-sixteenth corner where the line intersects lake.

W. Pine	10"	N 61° E	57.34 feet
Maple	6"	S 31° E	92.12 feet
Steel Sign Post		East	0.45 feet

7. #4 Special Meander Corner to Section 12, T34N, R16E
Corner established on line between the Center North one-sixteenth and the Northwest one-sixteenth corner where the line intersects lake.

Maple	5"	N 16° W	17.06 feet
Dbl. W. Birch		S 1° W	31.10 feet
Steel Sign Post		West	0.60 feet

8. #1 Witness Point to Section 12, T34N, R16E
Corner established on line between the Northwest corner and the West one-quarter corner of Section 12 where line intersects lake.

W. Pine	10"	N 89° E	38.34 feet
Spruce	7"	N 9° W	5.48 feet
Steel Sign Post		North	0.83 feet

9. #2 Witness Point to Section 12, T34N, R16E
Corner established on line between the Northwest corner and the West one-quarter corner of Section 12 where line intersects lake.

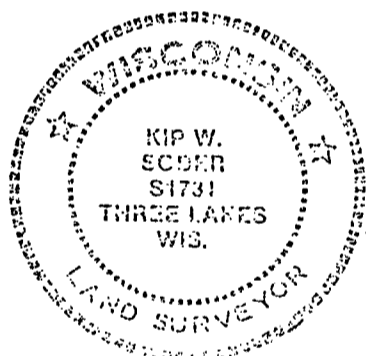
Spruce	8"	N 30° W	11.24 feet
Spruce	7"	S 57° W	22.16 feet
Steel Sign Post		North	0.67 feet

SURVEYOR'S AFFADAVIT

State of Wisconsin)
County of Forest)

I, Kip W. Soder, registered land surveyor in the State of Wisconsin, hereby certify that I have run the boundary lines shown hereon and set the established corners in Section 12, Township 34 North, Range 16 East, Fourth Principal Meridian, Forest County, State of Wisconsin.

The plat map and notes herewith are a correct representation of the land which was subdivided by the U.S. Forest Service Surveyor based on traverse work by a sepearte previous contract. The controlling corners were set and certified to by the U.S. Forest Service Surveyor. I have surveyed said boundary and set said established corners in accordance with the rules for survey of the public lands and with the Statutes of the State of Wisconsin.



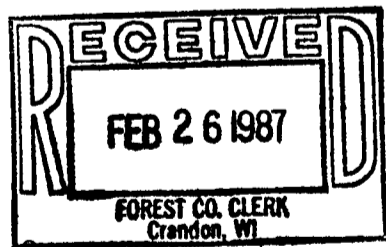
Kip W. Soder

Kip W. Soder
R.L.S. State of Wisconsin
Certificate S-1731

Date of Survey: 1986

Plat ready for filing

Dale Staege
District Ranger



Dora C. James
Forest Co. Clerk