

Stock No. 26273

FOREST CO SURVEYOR

FILE # 361603-19911004

DATE _____ BY _____

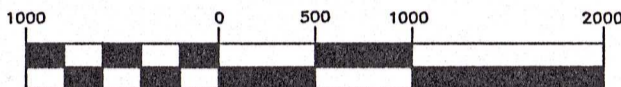
SHEET 1 OF 5

PLAT OF SURVEY

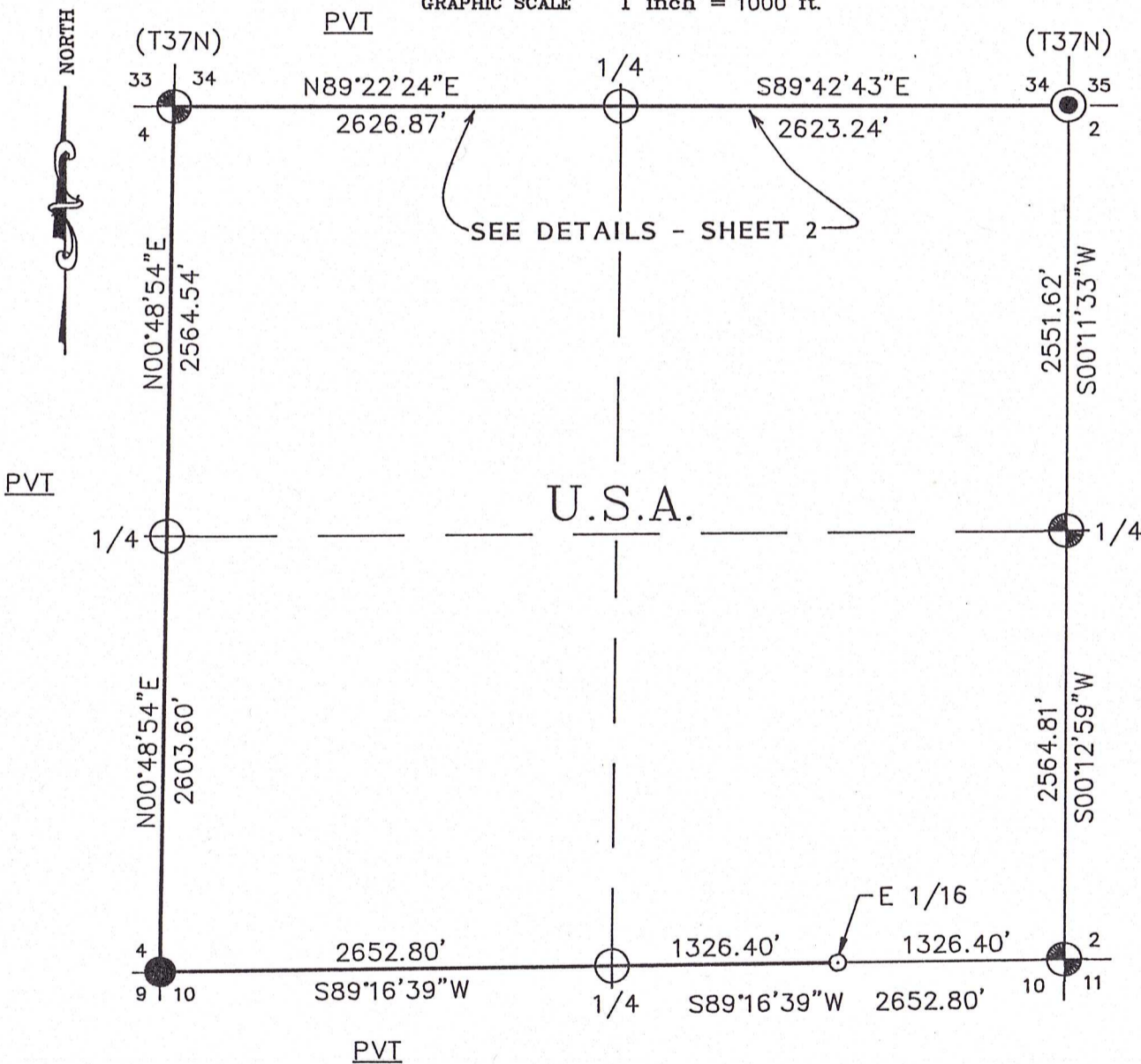
U.S. GOVERNMENT LANDS

BEING THE ENTIRETY OF SECTION 3,
TOWNSHIP 36 NORTH, RANGE 16 EAST,
FOURTH PRINCIPAL MERIDIAN;

FOREST COUNTY, WISCONSIN



GRAPHIC SCALE 1 inch = 1000 ft.



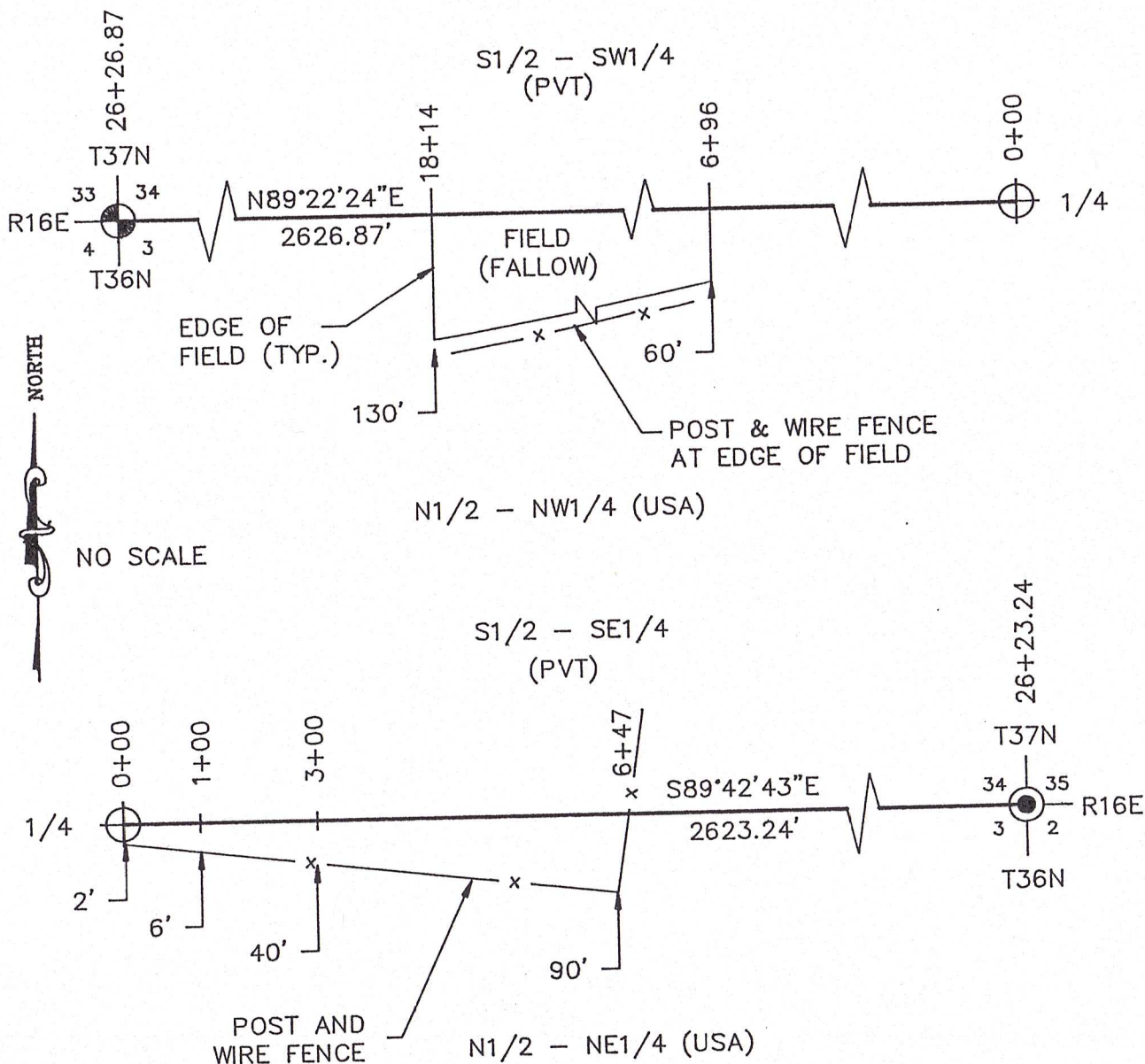
LEGEND

- ⊙ 2-1/2" X 120" ALUMINUM CAPPED PIPE - SET THIS SURVEY
- ⊕ 2-1/2" X 36" ALUMINUM CAPPED PIPE - SET THIS SURVEY
- 1" X 36" ALUMINUM CAPPED MONUMENT - SET THIS SURVEY
- ⊗ FOUND ALUMINUM CAPPED PIPE
- FOUND IRON PIPE WITH BRASS CAP
- BOUNDARY LINE MARKED TO FOREST SERVICE STANDARDS

SUPPLEMENTAL PLAT OF SURVEY

APPARENT ENCROACHMENTS UPON U.S. GOVERNMENT LANDS

N1/2-N1/2 SECTION 3, T36N-R16E,
4TH PRINCIPAL MERIDIAN
FOREST COUNTY, WISCONSIN



(SEE "PLAT OF SURVEY - U.S. GOVERNMENT LANDS" IN SECTION 3, T36N-R16E,
FOR CORNER MONUMENTATION AND BOUNDARY INFORMATION) SHEET 1 OF 5

I HEREBY CERTIFY THAT I HAVE SURVEYED
AND MAPPED THE LINES SHOWN HEREON
AND THAT THIS SURVEY IS CORRECT TO THE
BEST OF MY KNOWLEDGE AND BELIEF.



Charles F. Clark 9/6/1991
 CHARLES F. CLARK, RLS
 COLEMAN ENGINEERING COMPANY
 IRON MOUNTAIN, MICHIGAN 49801

Stock No. 26273

Sheet 3 of 5

SECTION 3, T36N-R16E
SURVEY NOTES

This survey was made by Coleman Engineering Company for the U.S. Department of Agriculture-Forest Service under Contract No. 53-56A6-1-00490 for the purpose of restoring and establishing corners on the perimeter of Section 3 and for marking the boundaries of U.S. Government land coincident with the perimeter of Section 3, Township 36 North, Range 16 East, Fourth Principal Meridian, Forest County, State of Wisconsin.

The U.S. Government acquired ownership of Section 3 in 1935.

The original township line and subdivision surveys of T36N-R16E were completed in September, 1857, and July, 1858, respectively.

The corner positions recovered, restored and established by this survey are marked by the monument described in the map legend.

The corner positions established were located to a minimum accuracy of 1 part in 5000.

The bearings between corner positions are true bearings as determined by solar (hour-angle) observations.

The field notes of the survey and a copy of this plat are on file in the Forest Supervisor's office in Rhinelander, Wisconsin.

CORNERS RECOVERED OR RESTORED

1. Standard Corner Common to Sections 33 and 34, T37N-R16E and Sections 3 and 4, T36N-R16E

Corner position monumented by T. R. Arnott, RLS 887. Certificate on file in Forest County - Document No. 109430.

Established Additional Corner References:

Sugar	6"	N31°E	46.39 Feet
Sugar	6"	S58°E	47.05 Feet
Aspen	7"	S23°W	20.27 Feet
Sugar	3"	N58°W	27.73 Feet
Steel Sign Post		Southeast	1.19 Feet

2. Standard Quarter Corner Common to Section 34, T37N-R16E and Section 3, T36N-R16E

Corner position recovered, marked by a 2" O.D. flue pipe along an east-west barbwire fenceline (down). No other evidence was found, pipe was accepted as best remaining evidence of corner location.

Established Corner References:

B. Spruce	5"	S54°W	41.15 Feet
B. Spruce	6"	N83°E	10.70 Feet
B. Spruce	6"	S28°E	12.49 Feet
B. Spruce	5"	N34°E	52.26 Feet
Steel Sign Post		West	1.52 Feet

3. Standard Corner Common to Sections 34 and 35, T37N-R16E and Sections 2 and 3, T36N-R16E

Corner position recovered, marked by a 2" O.D. flue pipe similar to others recovered as previously established by Goodman Lumber Company. No other evidence was found, pipe was accepted as best remaining evidence of corner location.

Established Corner References:

B. Spruce	9"	S62°E	136.32 Feet
W. Birch	7"	S44°E	147.62 Feet

Stock No. 26273

Sheet 4 of 5

B. Spruce	4"	N65°W	106.28 Feet
Tamarack	8"	N19°W	99.90 Feet
Steel Sign Post		North	2.00 Feet

4. Quarter Corner Common to Sections 2 and 3
 Corner position monumented by M.E. Stefan, RLS, 1558. Certificate on field in Forest County - Document No. 124217.
 Established Additional Corner References:

Aspen	5"	N26°E	14.77 Feet
Sugar (Twin)	9"	S83°E	32.36 Feet

5. Section Corner Common to Sections 2, 3, 10 and 11
 Corner position monumented by M.E. Stefan, RLS 1558. Certificate on file in Forest County - Document No. 124218.

6. Quarter Corner Common of Sections 3 and 10
 Corner position restored at midpoint of straight line between Southeast and Southwest corners of Section 3.
 Established Corner References:

Y. Birch	20"	N38°E	6.58 Feet
Cedar	10"	S31°E	53.56 Feet
Y. Birch	12"	S57°W	22.22 Feet
Y. Birch	14"	N34°W	48.61 Feet
Steel Sign Post		North	1.60 Feet

7. Section Corner Common to Sections 3, 4, 9 and 10
 Corner position monumented by J.F. Resvick, RLS 802. Certificate on file in Forest County - Document No. 107007.
 Established Additional Corner References:

Maple	6"	S42°W	54.79 Feet
Hemlock	19"	N64°W	49.94 Feet

8. Quarter Corner Common to Sections 3 and 4
 Restored corner on straight line between Northwest and Southwest corners of Section 3 at proportionate distances from respective corners.
 Established Corner References:

Basswood	17"	S26°E	14.43 Feet
Sugar	17"	S68°W	22.56 Feet
Sugar	8"	N17°W	46.38 Feet
Sugar	4"	N62°E	19.17 Feet
Steel Sign Post		South	1.16 Feet

CORNERS ESTABLISHED

1. East Sixteenth (1/16) Corner Between Sections 3 and 10
 Established corner position at midpoint of straight line between Southeast and South Quarter corners of Section 3.
 Established Corner References:

Y. Birch	10"	N73°E	13.27 Feet
Y. Birch (Triple)	20"	S16°E	20.79 Feet
Sugar	5"	S64°W	22.74 Feet
Steel Sign Post		Northeast	1.30 Feet

Stock No. 26273

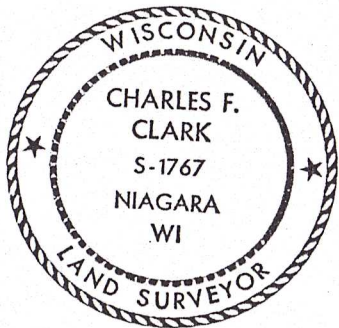
Sheet 5 of 5

SURVEYOR'S AFFIDAVIT

State of Wisconsin)
) S.S.
County of Forest)

I, Charles F. Clark, Land Surveyor for Coleman Engineering Company and a registered surveyor in the State of Wisconsin, hereby certify that this survey of Section 3, Township 36 North, Range 16 East, Fourth Principal Meridian, State of Wisconsin, was performed under my direct responsible supervision.

The plat map and the notes herewith are a correct representation of the land surveyed and divided. I have surveyed and subdivided said section in accordance with the rules for survey of the public lands and with the statutes of the State of Wisconsin.



Charles F. Clark 9/4/91

Charles F. Clark
Coleman Engineering Company
R.L.S., State of Wisconsin
License No. S-1767

Plat ready for filing:

Acting *Darrell E. Richards*
District Ranger

Date of Survey: 1991

